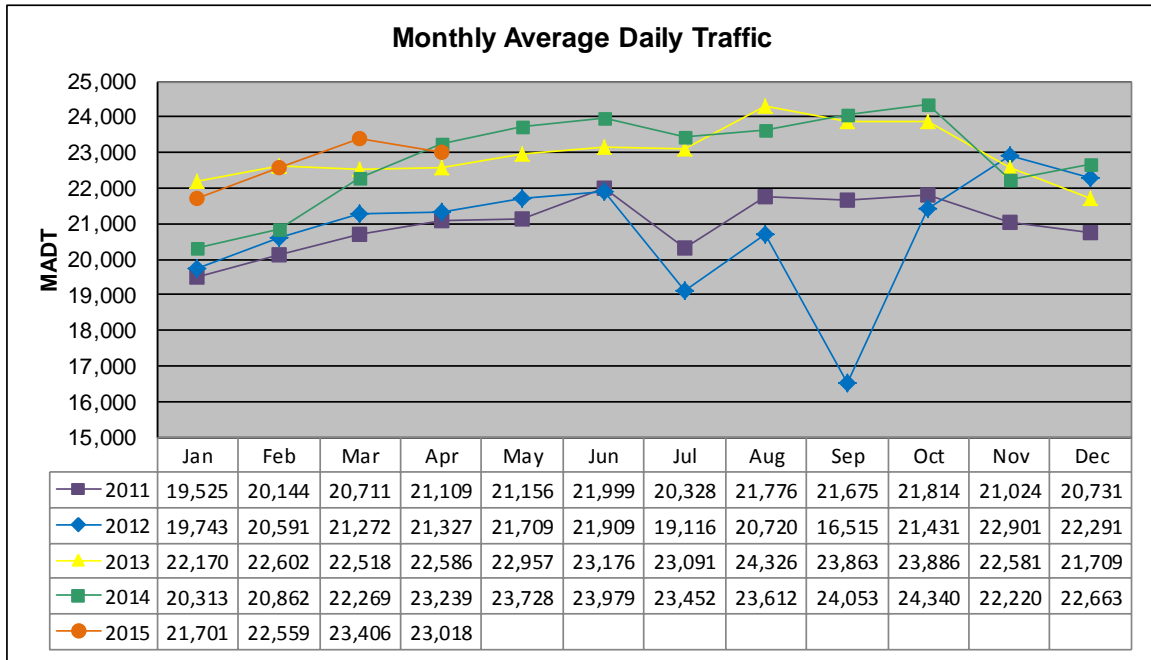


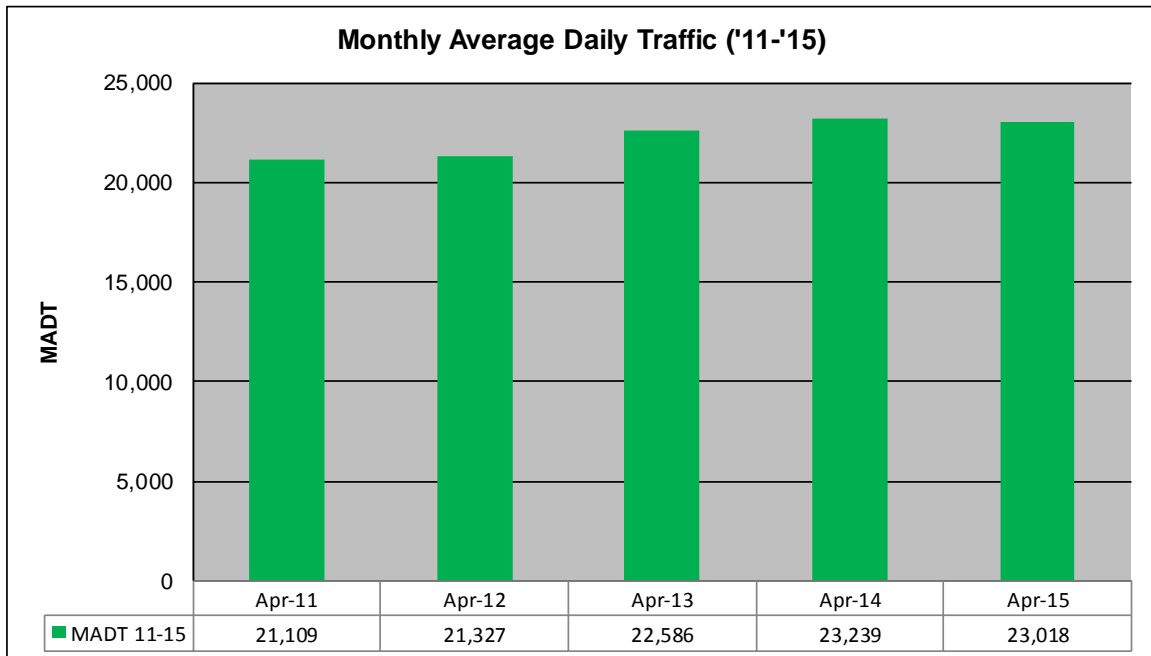
MONTHLY REPORT, STATION NO. 212 (ATR)

APRIL 2015

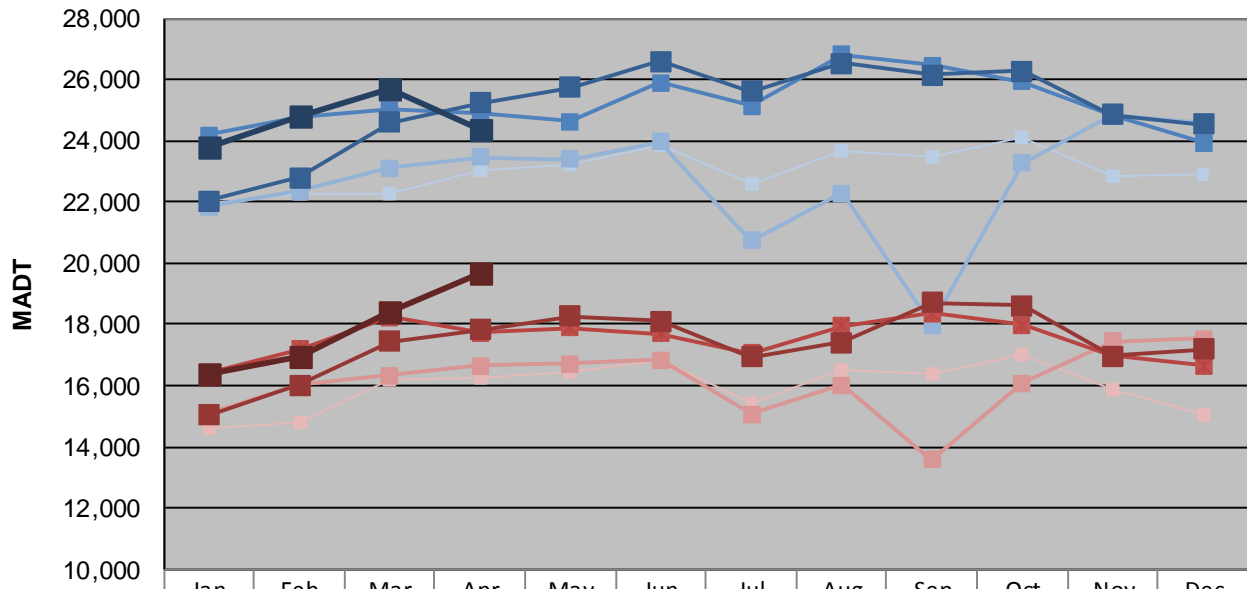
Station Measurement: VOLUME/SPEED/CLASS		
Route: TH 14	Route Direction: E/W	Lanes: 6
County: Olmsted	Closest City: Rochester	
Functional Class: Urban Other Principal Arterial		
Location: E OF CR104 (60TH AVE NW), W OF ROCHESTER		
Ref Post: 207+00.260	True Mile: 209.205	Sequence No. 6755
Volume: 690,552		MADT: 23,018
Weekday (M-F) MADT: 24,332		Weekend (Sa-Su) MADT: 19,664



Note: Decrease in traffic July to September 2012 due to construction on TH 14; Increase in traffic beginning November 2012 due to an addition of two lanes at the site



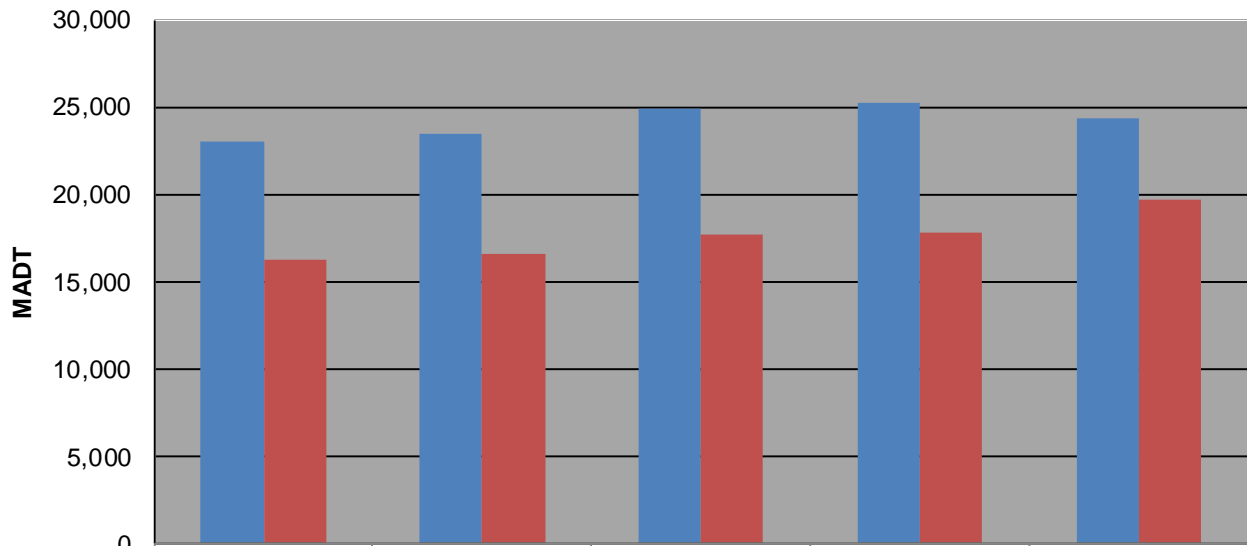
Weekday (WD)/Weekend (WE) Monthly Average Daily Traffic



	Jan	Feb	Mar	Apr	May	Jun	Jul	Aug	Sep	Oct	Nov	Dec
'11 WD	21,938	22,266	22,304	23,032	23,248	23,850	22,586	23,666	23,476	24,140	22,858	22,902
'11 WE	14,618	14,810	16,222	16,250	16,466	16,822	15,442	16,490	16,356	17,038	15,852	15,064
'12 WD	21,850	22,338	23,122	23,468	23,392	23,966	20,752	22,294	17,982	23,266	24,868	24,616
'12 WE	15,082	16,060	16,334	16,638	16,720	16,848	15,078	16,032	13,582	16,074	17,452	17,524
'13 WD	24,180	24,756	25,024	24,902	24,646	25,914	25,132	26,818	26,464	25,946	24,832	23,922
'13 WE	16,406	17,180	18,230	17,728	17,874	17,702	17,066	17,958	18,372	17,972	16,966	16,662
'14 WD	22,038	22,802	24,608	25,224	25,754	26,604	25,628	26,530	26,138	26,284	24,842	24,544
'14 WE	15,052	16,012	17,460	17,824	18,282	18,124	16,928	17,414	18,700	18,602	16,978	17,200
'15 WD	23,794	24,796	25,682	24,332								
'15 WE	16,408	16,970	18,384	19,664								

Note: 'Weekday' defined as Monday-Friday, 'Weekend' defined as Saturday-Sunday

Weekday/Weekend Monthly Average Daily Traffic ('11-'15)



	Apr-11	Apr-12	Apr-13	Apr-14	Apr-15
Weekday	23,032	23,468	24,902	25,224	24,332
Weekend	16,250	16,638	17,728	17,824	19,664