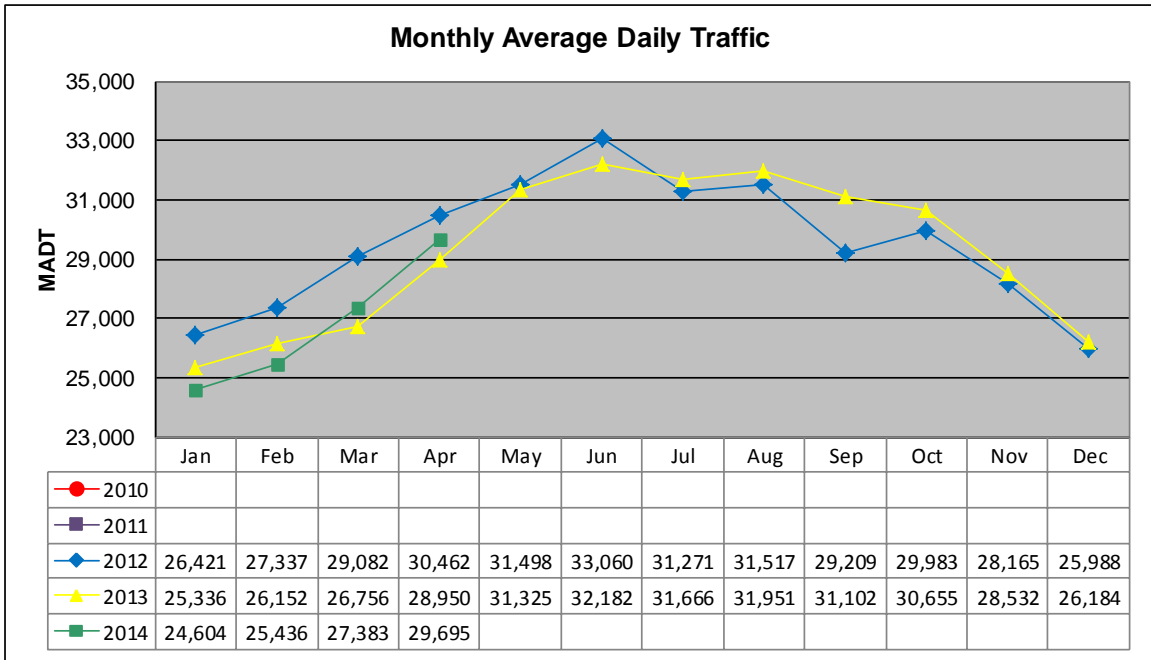


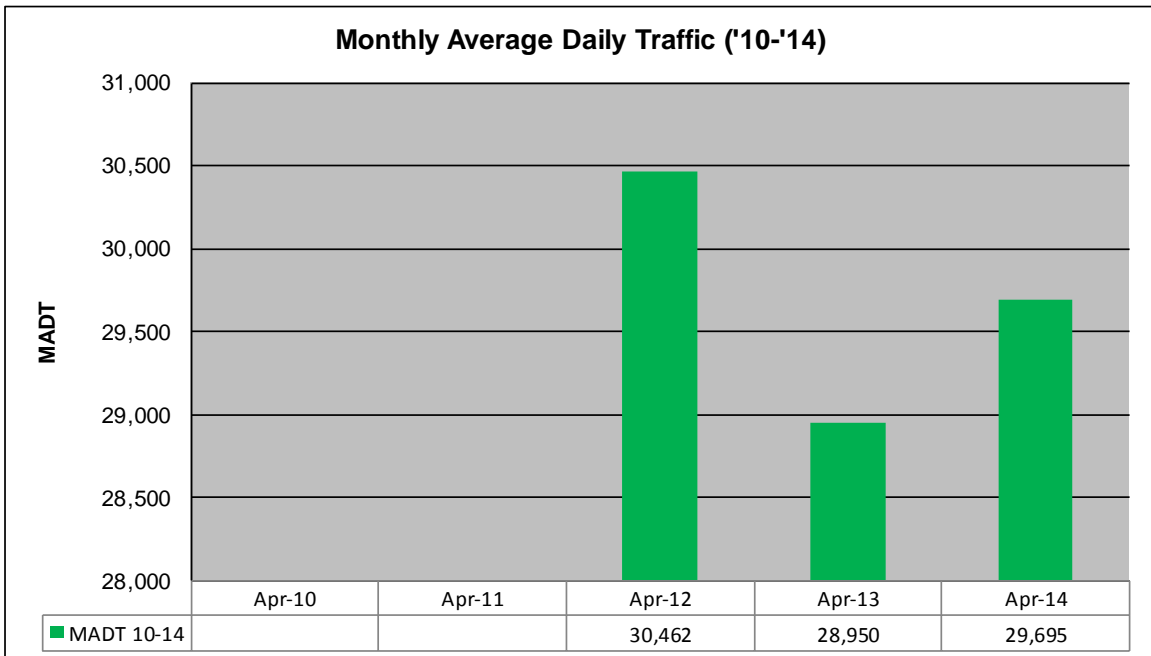
MONTHLY REPORT, STATION NO. 42 (WIM)

APRIL 2014

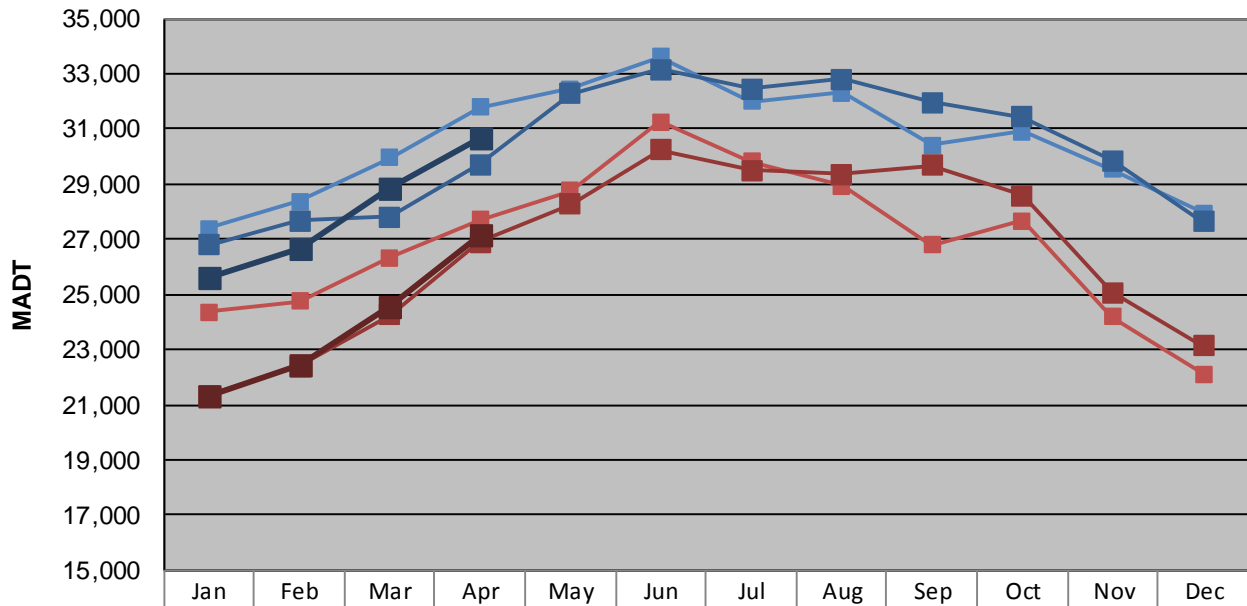
Station Measurement: VOLUME/SPEED/CLASS/WEIGHT		
Route: TH 61	Route Direction: N/S	Lanes: 4
County: Washington		Closest City: Cottage Grove
Functional Class: Rural Principal Arterial - Other		
Location: 1.3 MI N OF CSAH45, S OF CROOKSTON		
Ref Post: 119+00.644	True Mile: 119.337	Sequence No. 11128
Volume: 890,858		MADT: 29,695
Weekday (M-F) MADT: 30,648		Weekend (Sa-Su) MADT: 27,152



Note: Began collecting data January 2012



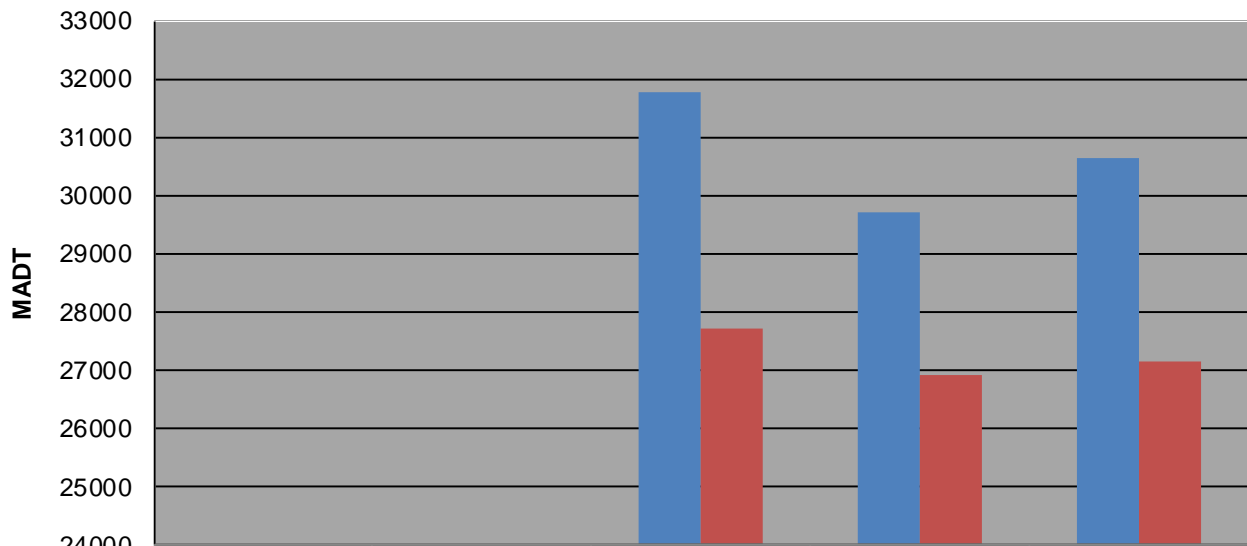
Weekday (WD)/Weekend (WE) Monthly Average Daily Traffic



'10 WD												
'10 WE												
'11 WD												
'11 WE												
'12 WD	27,394	28,376	29,968	31,786	32,470	33,620	31,988	32,322	30,422	30,890	29,550	27,954
'12 WE	24,370	24,760	26,344	27,718	28,752	31,246	29,822	28,938	26,784	27,678	24,182	22,094
'13 WD	26,782	27,656	27,798	29,724	32,268	33,146	32,438	32,816	31,954	31,450	29,850	27,648
'13 WE	21,328	22,392	24,252	26,900	28,270	30,254	29,500	29,368	29,684	28,576	25,076	23,116
'14 WD	25,582	26,636	28,816	30,648								
'14 WE	21,302	22,436	24,556	27,152								

Note: 'Weekday' defined as Monday-Friday, 'Weekend' defined as Saturday-Sunday

Weekday/Weekend Monthly Average Daily Traffic ('10-'14)



Weekday			31,786	29,724	30,648
Weekend			27,718	26,900	27,152