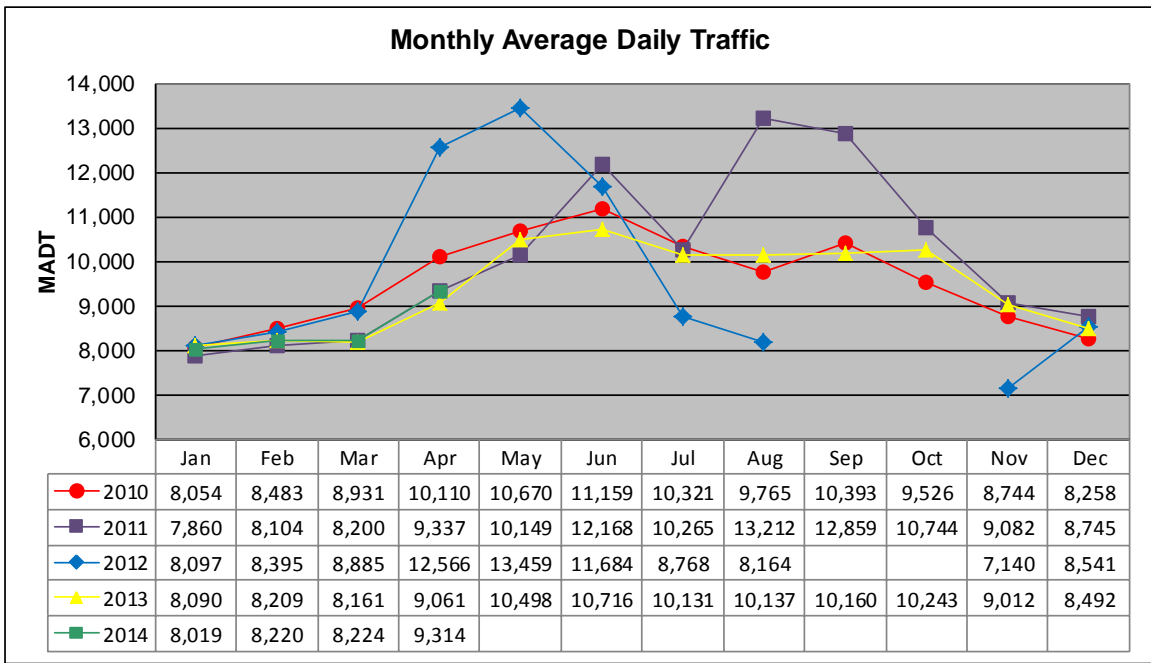


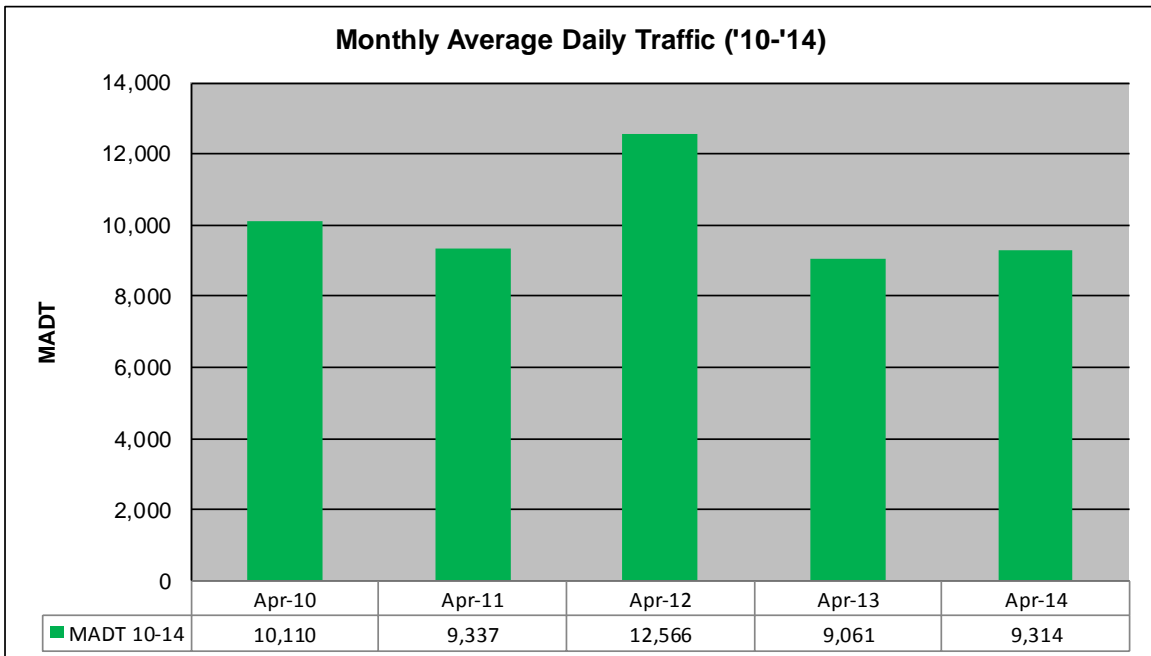
MONTHLY REPORT, STATION NO. 390 (ATR)

APRIL 2014

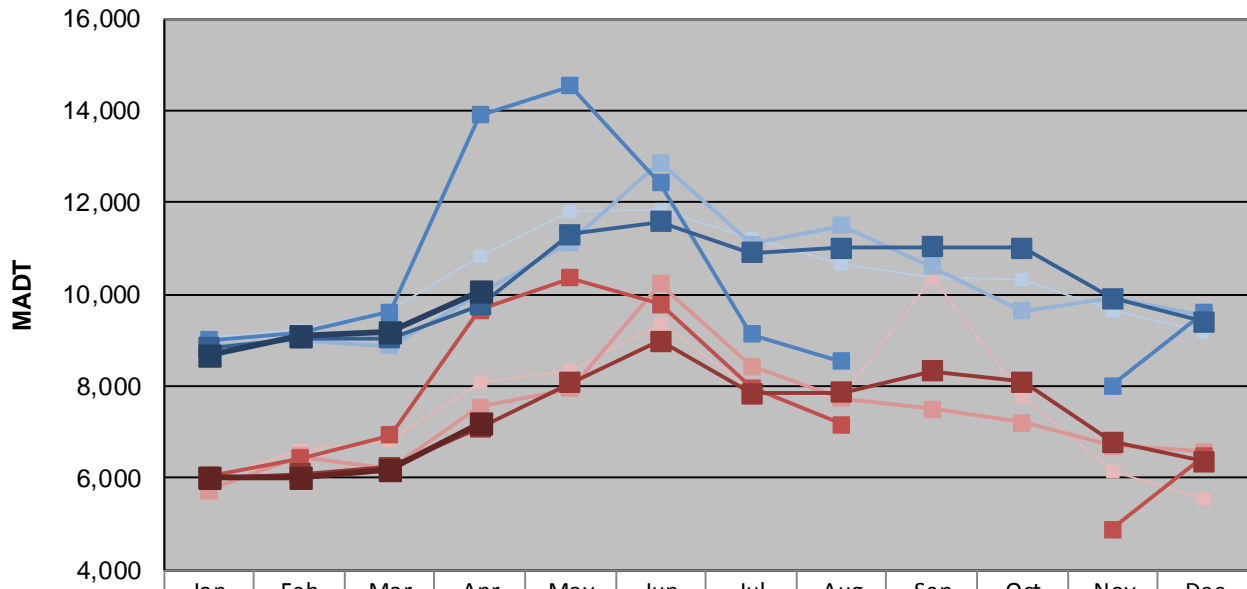
| | | |
|---|----------------------|------------------------------------|
| Station Measurement: VOLUME/SPEED/CLASS | | |
| Route: TH 61 | Route Direction: N/S | Lanes: 2 |
| County: Washington | | Closest City: Hugo |
| Functional Class: Urban Minor Arterial | | |
| Location: .9 MI N OF CSAH8 IN HUGO | | |
| Ref Post: 153+00.300 | True Mile: 153.097 | Sequence No. 9878 |
| Volume: 279,406 | | MADT: 9,314 |
| Weekday (M-F) MADT: 10,088 | | Weekend (Sa-Su) MADT: 7,196 |



Note: Increase in traffic Jun/Aug/Sep '11 and Apr/May '12 due to detour from I-35E... Decrease in traffic Aug/Sep '10 and Jul/Aug/Nov '12 due to construction on TH 61... No data Sep/Oct '12 due to sensors destroyed by construction



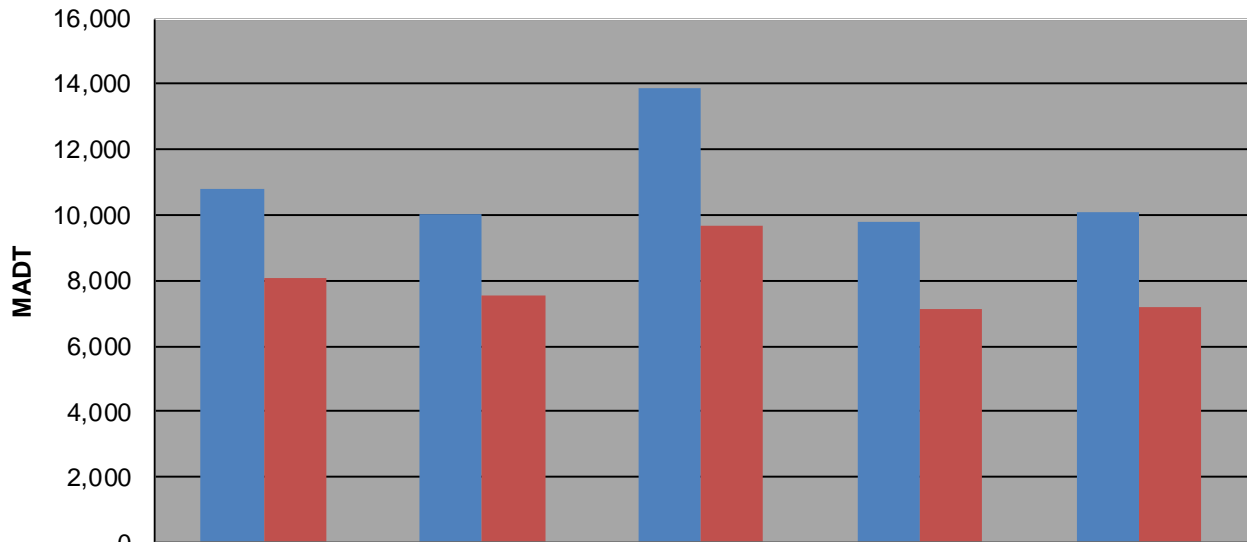
Weekday (WD)/Weekend (WE) Monthly Average Daily Traffic



| | Jan | Feb | Mar | Apr | May | Jun | Jul | Aug | Sep | Oct | Nov | Dec |
|--------|-------|-------|-------|--------|--------|--------|--------|--------|--------|--------|-------|-------|
| '10 WD | 9,072 | 9,230 | 9,670 | 10,814 | 11,796 | 11,838 | 11,204 | 10,648 | 10,384 | 10,306 | 9,670 | 9,184 |
| '10 WE | 5,974 | 6,616 | 6,840 | 8,100 | 8,338 | 9,348 | 7,936 | 7,752 | 10,374 | 7,794 | 6,150 | 5,544 |
| '11 WD | 8,884 | 9,004 | 8,882 | 10,020 | 11,134 | 12,866 | 11,088 | 11,486 | 10,620 | 9,640 | 9,910 | 9,550 |
| '11 WE | 5,732 | 6,470 | 6,222 | 7,558 | 7,956 | 10,226 | 8,432 | 7,748 | 7,508 | 7,218 | 6,700 | 6,572 |
| '12 WD | 9,008 | 9,152 | 9,620 | 13,896 | 14,530 | 12,422 | 9,134 | 8,548 | | | 8,008 | 9,590 |
| '12 WE | 6,060 | 6,436 | 6,930 | 9,662 | 10,360 | 9,776 | 7,962 | 7,172 | | | 4,882 | 6,466 |
| '13 WD | 8,826 | 9,056 | 9,042 | 9,770 | 11,304 | 11,582 | 10,898 | 11,008 | 11,030 | 11,004 | 9,914 | 9,414 |
| '13 WE | 6,016 | 6,090 | 6,250 | 7,100 | 8,068 | 8,982 | 7,854 | 7,862 | 8,336 | 8,092 | 6,794 | 6,364 |
| '14 WD | 8,660 | 9,098 | 9,196 | 10,088 | | | | | | | | |
| '14 WE | 6,032 | 6,022 | 6,208 | 7,196 | | | | | | | | |

Note: 'Weekday' defined as Monday-Friday, 'Weekend' defined as Saturday-Sunday

Weekday/Weekend Monthly Average Daily Traffic ('10-'14)



| | Apr-10 | Apr-11 | Apr-12 | Apr-13 | Apr-14 |
|---------|--------|--------|--------|--------|--------|
| Weekday | 10,814 | 10,020 | 13,896 | 9,770 | 10,088 |
| Weekend | 8,100 | 7,558 | 9,662 | 7,100 | 7,196 |