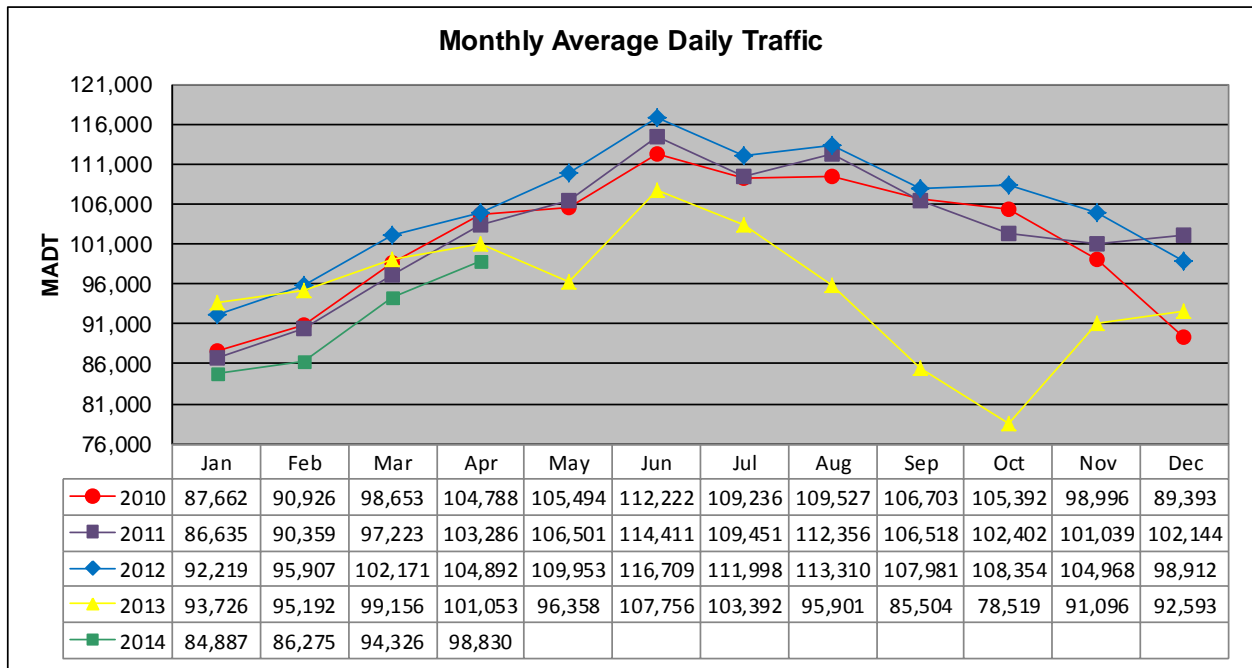


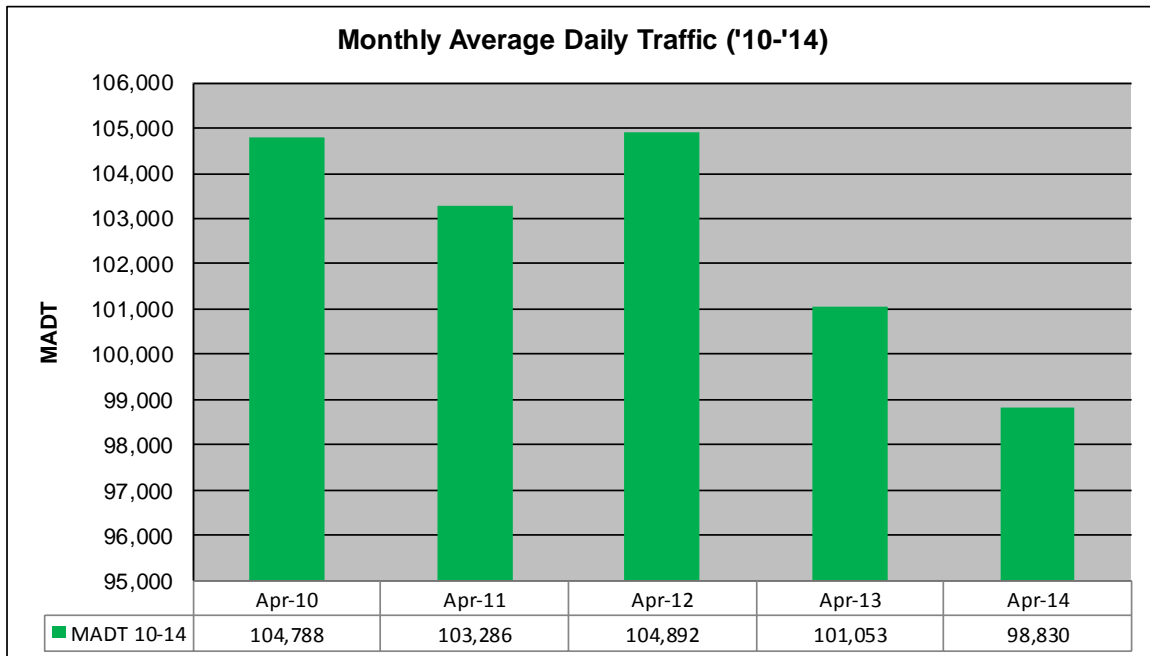
MONTHLY REPORT, STATION NO. 305 (ATR)

APRIL 2014

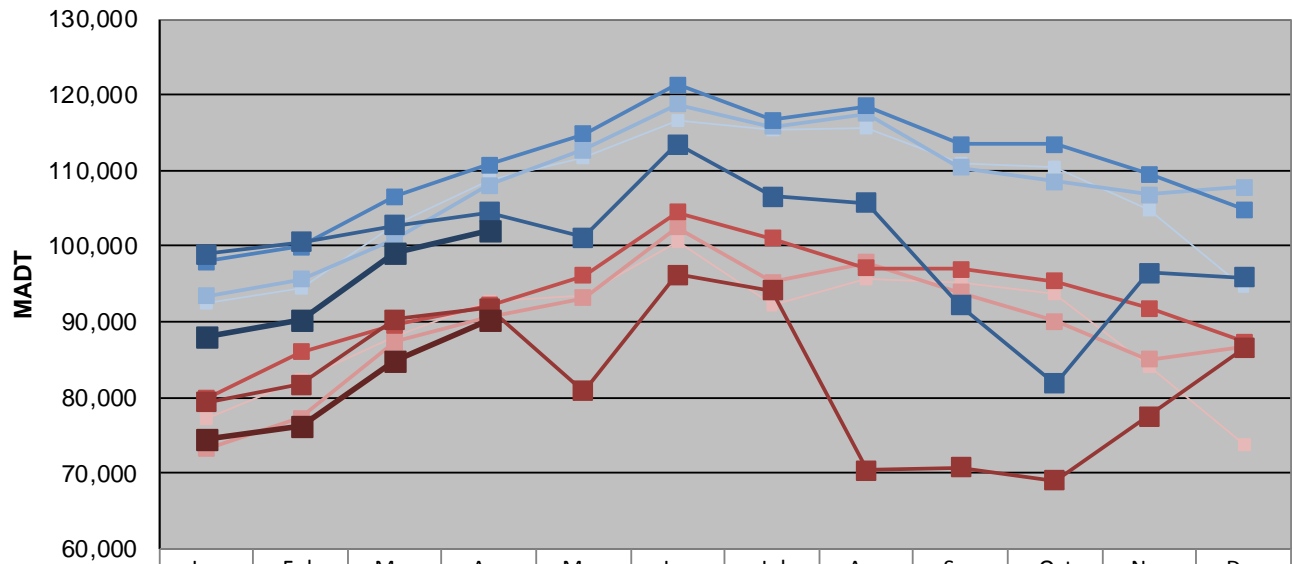
Station Measurement: VOLUME		
Route: I-35	Route Direction: N/S	Lanes: 6
County: Dakota		Closest City: Burnsville
Functional Class: Urban Principal Arterial - Interstate		
Location: S OF MSAS101 (CRYSTAL LAKE RD W) IN BURNSVILLE		
Ref Post: 087+00.070	True Mile: 87.071	Sequence No. 6786
Volume: 2,964,912		MADT: 98,830
Weekday (M-F) MADT: 102,146		Weekend (Sa-Su) MADT: 90,248



Note: Decrease in traffic May and August to November 2013 due to construction on I-35



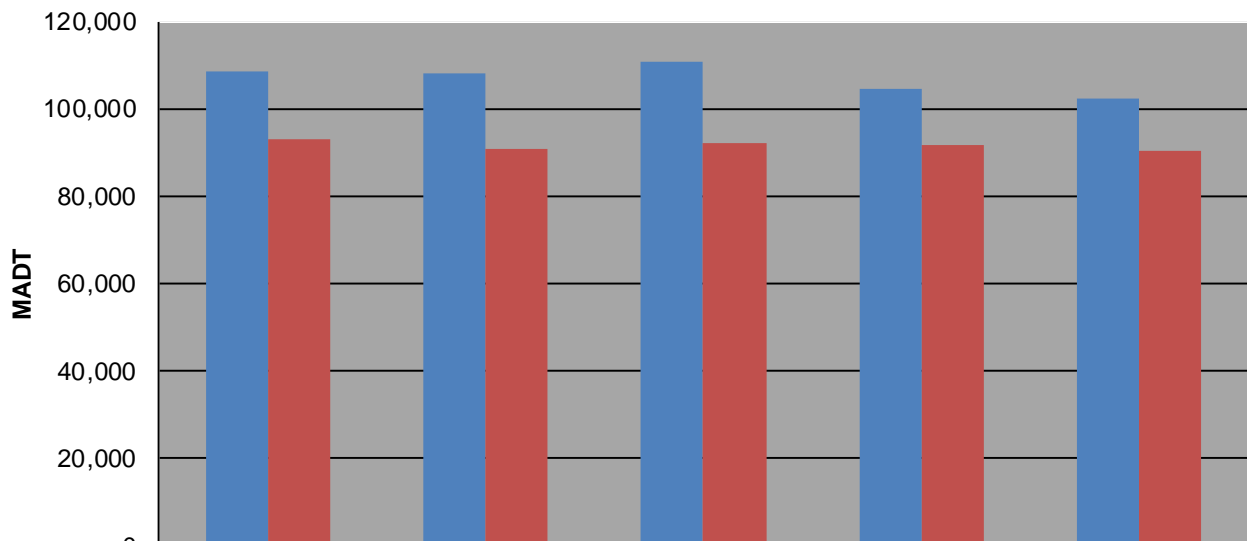
Weekday (WD)/Weekend (WE) Monthly Average Daily Traffic



	Jan	Feb	Mar	Apr	May	Jun	Jul	Aug	Sep	Oct	Nov	Dec
'10 WD	92,534	94,348	102,762	108,666	111,702	116,642	115,386	115,702	110,844	110,462	104,720	94,494
'10 WE	77,132	82,372	88,102	92,818	93,458	100,666	92,092	95,742	95,186	93,590	84,208	73,664
'11 WD	93,408	95,590	100,988	108,070	112,728	118,724	115,826	117,566	110,418	108,550	106,794	107,740
'11 WE	73,206	77,256	87,314	90,664	93,156	102,436	95,216	97,874	93,868	90,038	85,042	86,796
'12 WD	97,988	99,894	106,554	110,782	114,830	121,282	116,682	118,538	113,474	113,400	109,540	104,852
'12 WE	79,844	85,936	89,506	92,208	96,068	104,510	101,008	97,022	96,996	95,296	91,766	87,292
'13 WD	98,932	100,570	102,750	104,472	101,158	113,510	106,570	105,680	92,132	81,766	96,420	95,848
'13 WE	79,354	81,746	90,282	91,828	80,794	96,250	94,072	70,360	70,708	68,998	77,560	86,486
'14 WD	88,080	90,318	99,136	102,146								
'14 WE	74,490	76,166	84,924	90,248								

Note: 'Weekday' defined as Monday-Friday, 'Weekend' defined as Saturday-Sunday

Weekday/Weekend Monthly Average Daily Traffic ('10-'14)



	Apr-10	Apr-11	Apr-12	Apr-13	Apr-14
Weekday	108,666	108,070	110,782	104,472	102,146
Weekend	92,818	90,664	92,208	91,828	90,248