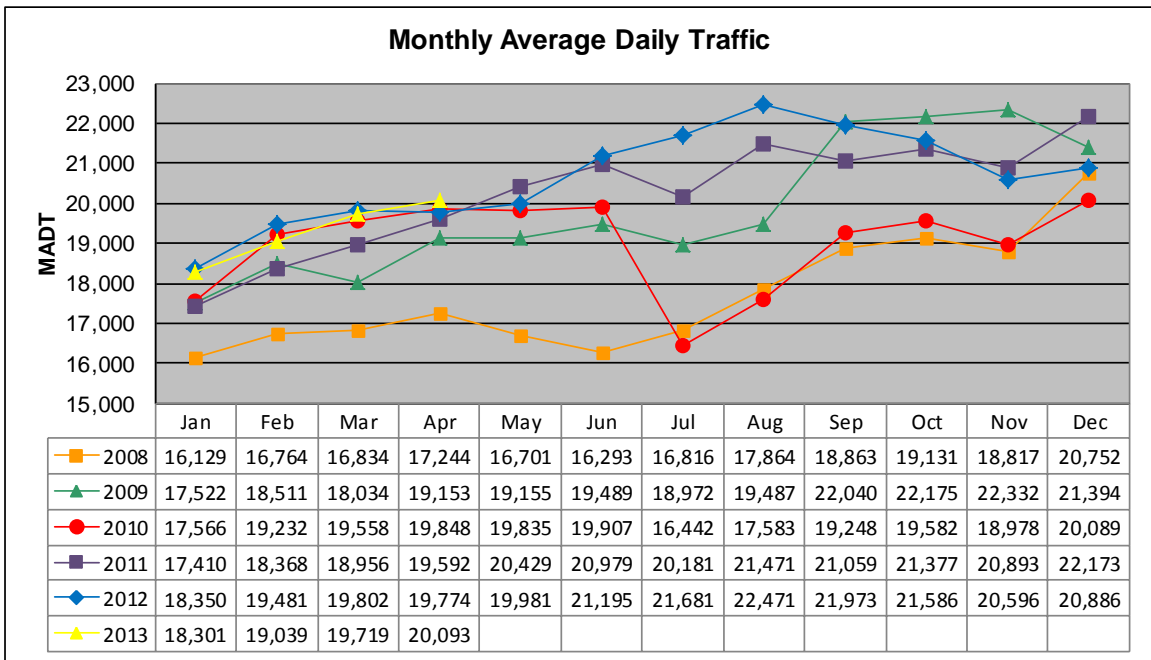


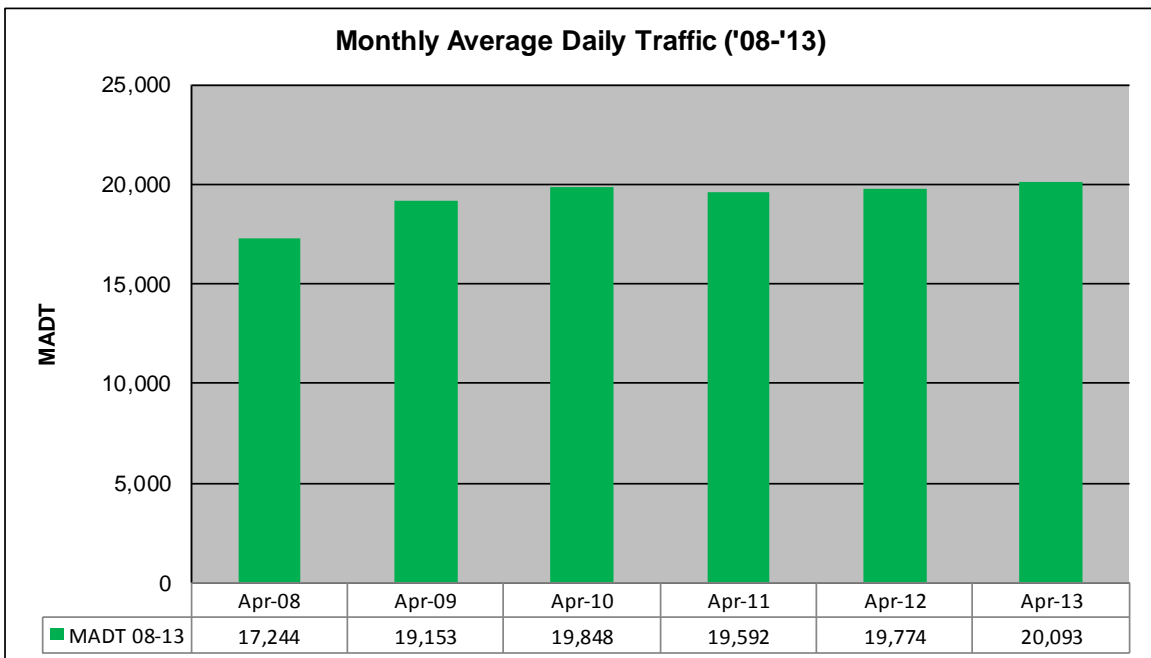
MONTHLY REPORT, STATION NO. 464 (ATR)

APRIL 2013

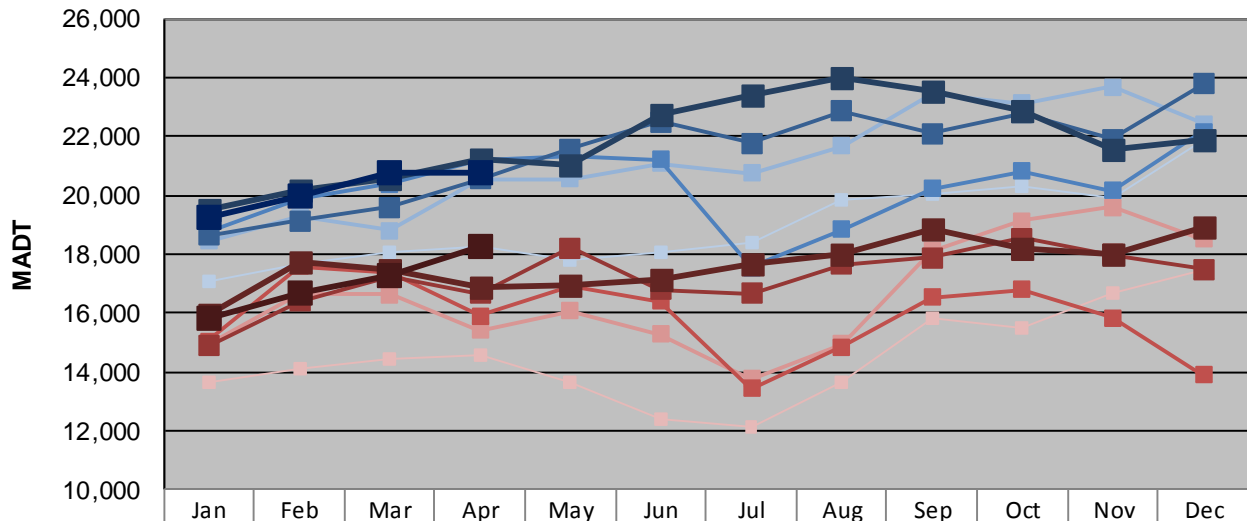
| | | |
|--|-------------------------|-------------------------------------|
| Station Measurement: VOLUME | | |
| Route: CSAH 20 | Route Direction: E/W | Lanes: 5 |
| County: Ramsey | Closest City: Maplewood | |
| Functional Class: Urban Minor Arterial | | |
| Location: E OF TH61 IN MAPLEWOOD | | |
| Ref Post: 000+00.870 | True Mile: 8.986 | Sequence No. 9912 |
| Volume: 602,801 | | MADT: 20,093 |
| Weekday (M-F) MADT: 20,780 | | Weekend (Sa-Su) MADT: 18,244 |



Note: Decrease in traffic January to November 2008 and July to November 2010 due to construction on TH 61



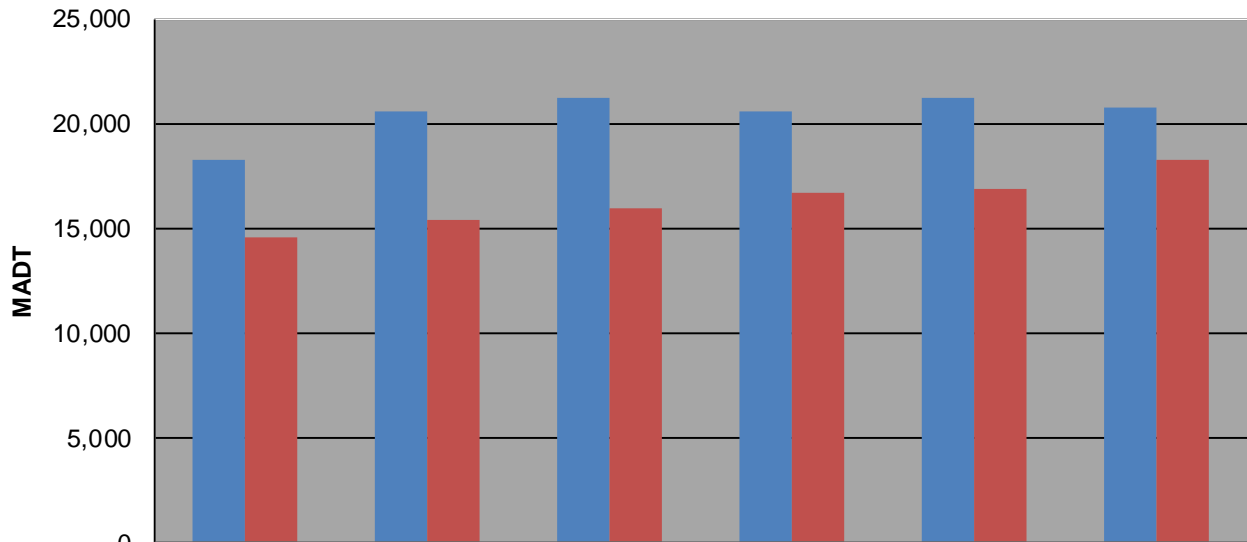
Weekday (WD)/Weekend (WE) Monthly Average Daily Traffic



| | Jan | Feb | Mar | Apr | May | Jun | Jul | Aug | Sep | Oct | Nov | Dec |
|--------|--------|--------|--------|--------|--------|--------|--------|--------|--------|--------|--------|--------|
| '08 WD | 17,068 | 17,686 | 18,040 | 18,246 | 17,790 | 18,038 | 18,380 | 19,820 | 20,054 | 20,328 | 19,884 | 21,862 |
| '08 WE | 13,616 | 14,090 | 14,424 | 14,536 | 13,618 | 12,404 | 12,128 | 13,676 | 15,806 | 15,488 | 16,686 | 17,488 |
| '09 WD | 18,446 | 19,264 | 18,818 | 20,536 | 20,548 | 21,066 | 20,740 | 21,666 | 23,436 | 23,108 | 23,692 | 22,412 |
| '09 WE | 14,902 | 16,628 | 16,632 | 15,422 | 16,056 | 15,276 | 13,748 | 14,950 | 18,116 | 19,142 | 19,604 | 18,520 |
| '10 WD | 18,750 | 19,900 | 20,386 | 21,192 | 21,330 | 21,204 | 17,542 | 18,824 | 20,236 | 20,808 | 20,154 | 22,160 |
| '10 WE | 15,034 | 17,566 | 17,394 | 15,912 | 16,926 | 16,396 | 13,416 | 14,850 | 16,522 | 16,782 | 15,850 | 13,886 |
| '11 WD | 18,650 | 19,148 | 19,602 | 20,562 | 21,566 | 22,484 | 21,758 | 22,842 | 22,090 | 22,786 | 21,906 | 23,780 |
| '11 WE | 14,884 | 16,392 | 17,250 | 16,668 | 18,194 | 16,806 | 16,648 | 17,652 | 17,890 | 18,526 | 17,976 | 17,494 |
| '12 WD | 19,524 | 20,188 | 20,556 | 21,194 | 21,008 | 22,726 | 23,372 | 23,980 | 23,542 | 22,888 | 21,540 | 21,880 |
| '12 WE | 15,930 | 17,750 | 17,494 | 16,896 | 16,958 | 17,168 | 17,682 | 17,964 | 18,834 | 18,160 | 17,988 | 18,938 |
| '13 WD | 19,238 | 19,980 | 20,760 | 20,780 | | | | | | | | |
| '13 WE | 15,824 | 16,688 | 17,300 | 18,244 | | | | | | | | |

Note: 'Weekday' defined as Monday-Friday, 'Weekend' defined as Saturday-Sunday

Weekday/Weekend Monthly Average Daily Traffic ('08-'13)



| | Apr-08 | Apr-09 | Apr-10 | Apr-11 | Apr-12 | Apr-13 |
|---------|--------|--------|--------|--------|--------|--------|
| Weekday | 18,246 | 20,536 | 21,192 | 20,562 | 21,194 | 20,780 |
| Weekend | 14,536 | 15,422 | 15,912 | 16,668 | 16,896 | 18,244 |