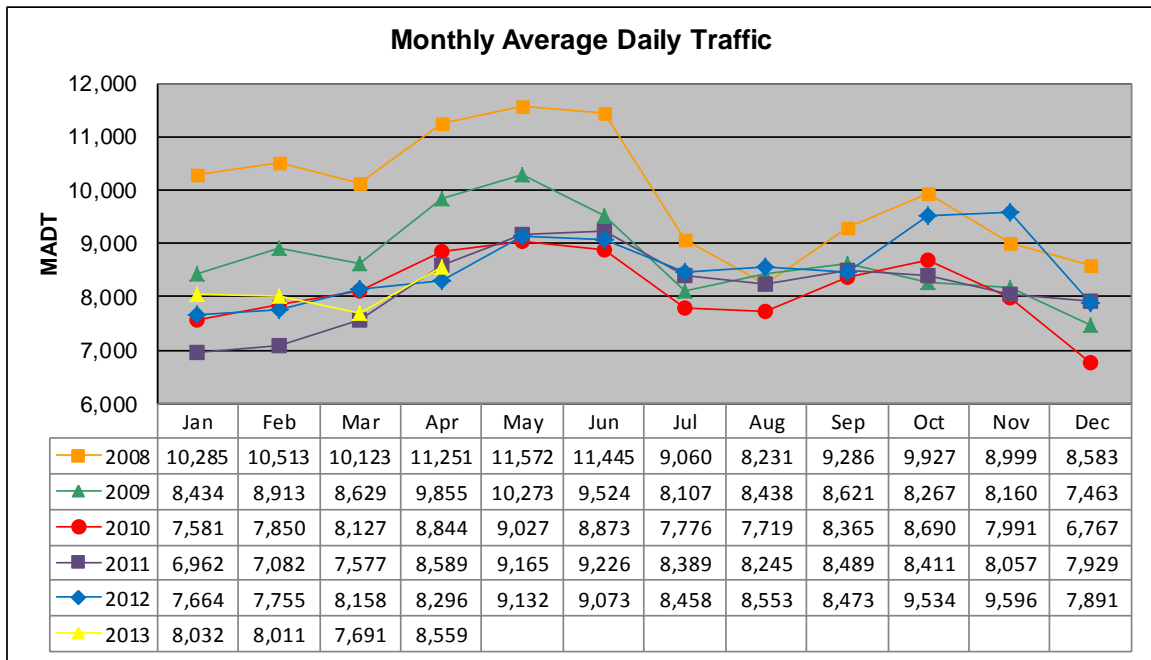


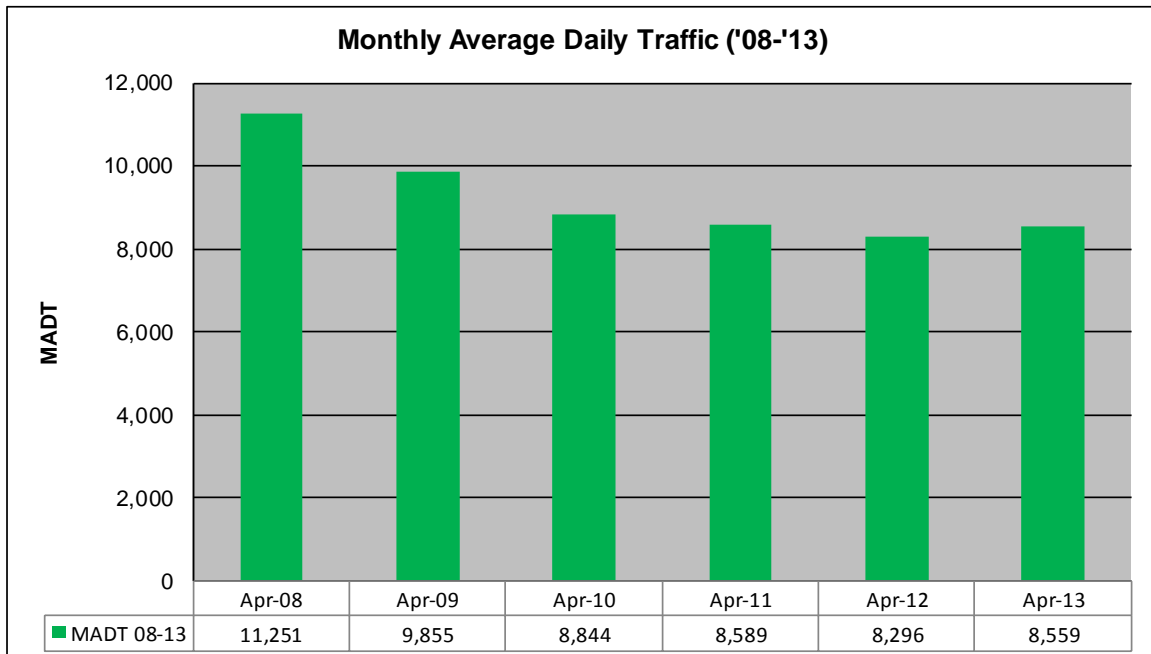
MONTHLY REPORT, STATION NO. 458 (ATR)

APRIL 2013

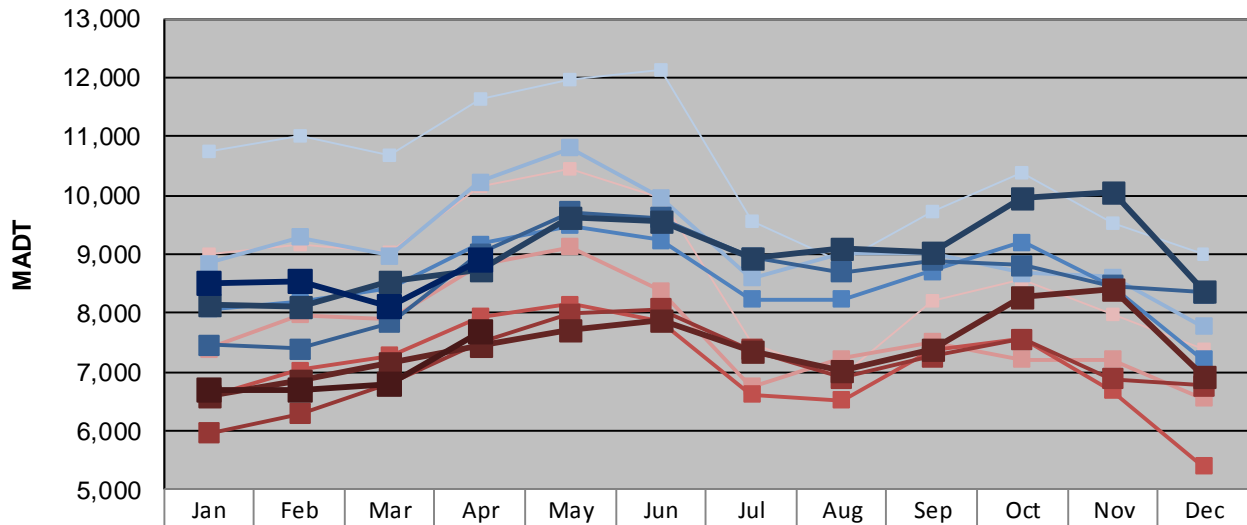
Station Measurement: VOLUME		
Route: MSAS 108	Route Direction: E/W	Lanes: 2
County: Carver	Closest City: Chaska	
Functional Class: Urban Local		
Location: .3 MI W OF TH41 IN CHASKA		
Ref Post: 001+00.210	True Mile: 1.21	Sequence No. 9907
Volume: 256,772		MADT: 8,559
Weekday (M-F) MADT: 8,886		Weekend (Sa-Su) MADT: 7,682



Note: Decrease in traffic July to September 2008 and August 2010 due to construction on MSAS 108... Increase in traffic November 2012 due to detour from TH 212



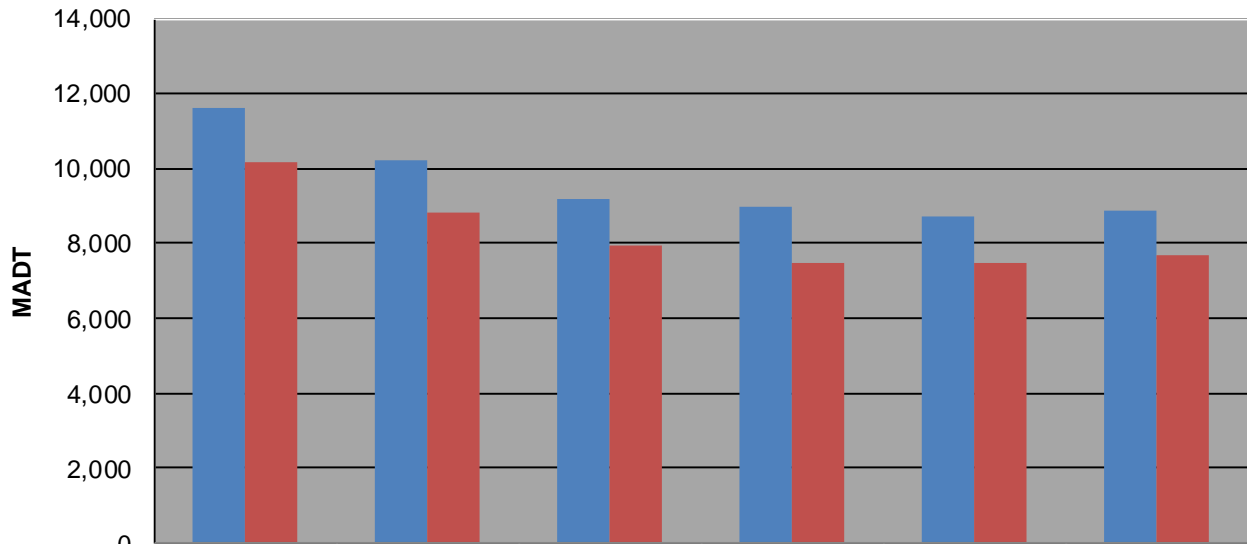
Weekday (WD)/Weekend (WE) Monthly Average Daily Traffic



	Jan	Feb	Mar	Apr	May	Jun	Jul	Aug	Sep	Oct	Nov	Dec
'08 WD	10,758	11,002	10,668	11,642	11,964	12,132	9,574	8,872	9,716	10,378	9,518	8,994
'08 WE	8,998	9,168	9,022	10,164	10,434	9,942	7,466	6,912	8,216	8,564	7,962	7,376
'09 WD	8,840	9,290	8,968	10,232	10,806	9,964	8,588	9,024	9,004	8,676	8,602	7,764
'09 WE	7,396	7,968	7,886	8,818	9,122	8,372	6,742	7,220	7,506	7,210	7,206	6,544
'10 WD	8,068	8,176	8,430	9,164	9,476	9,236	8,224	8,234	8,710	9,202	8,438	7,216
'10 WE	6,584	7,030	7,280	7,932	8,144	7,856	6,622	6,520	7,368	7,578	6,686	5,402
'11 WD	7,448	7,392	7,834	8,998	9,708	9,616	8,942	8,698	8,896	8,808	8,454	8,342
'11 WE	5,950	6,282	6,814	7,500	7,978	8,066	7,368	6,888	7,266	7,550	6,886	6,760
'12 WD	8,152	8,110	8,538	8,718	9,610	9,548	8,924	9,082	9,014	9,950	10,036	8,368
'12 WE	6,606	6,858	7,146	7,456	7,702	7,892	7,342	7,008	7,392	8,272	8,408	6,930
'13 WD	8,512	8,546	8,114	8,886								
'13 WE	6,674	6,676	6,774	7,682								

Note: 'Weekday' defined as Monday-Friday, 'Weekend' defined as Saturday-Sunday

Weekday/Weekend Monthly Average Daily Traffic ('08-'13)



	Apr-08	Apr-09	Apr-10	Apr-11	Apr-12	Apr-13
Weekday	11,642	10,232	9,164	8,998	8,718	8,886
Weekend	10,164	8,818	7,932	7,500	7,456	7,682