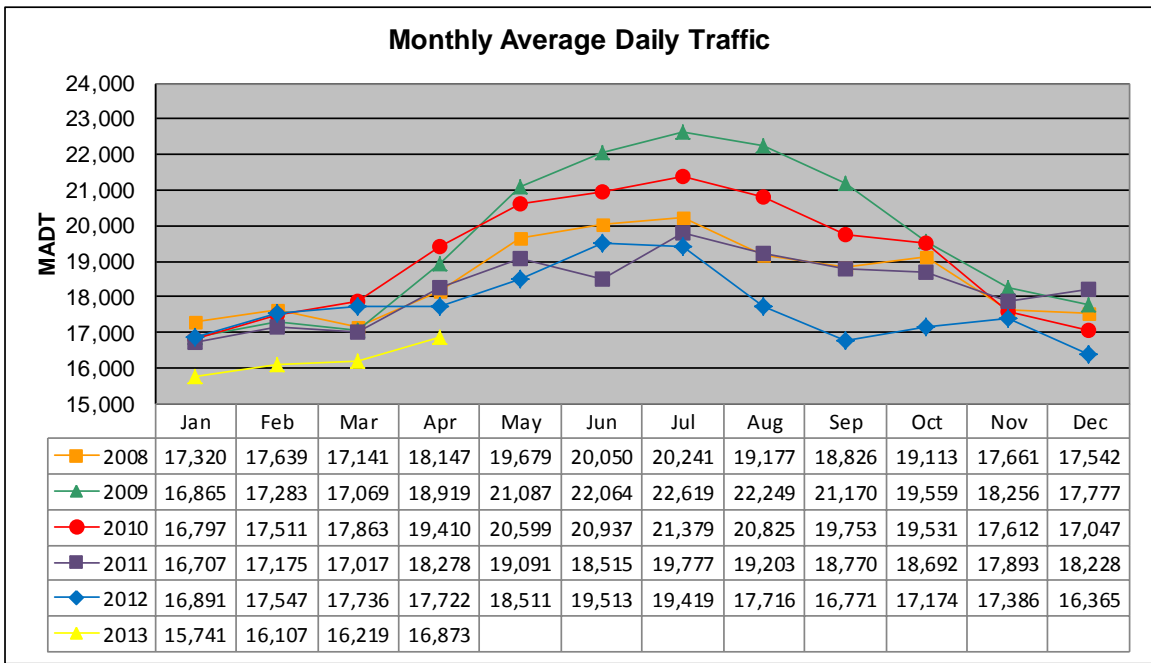


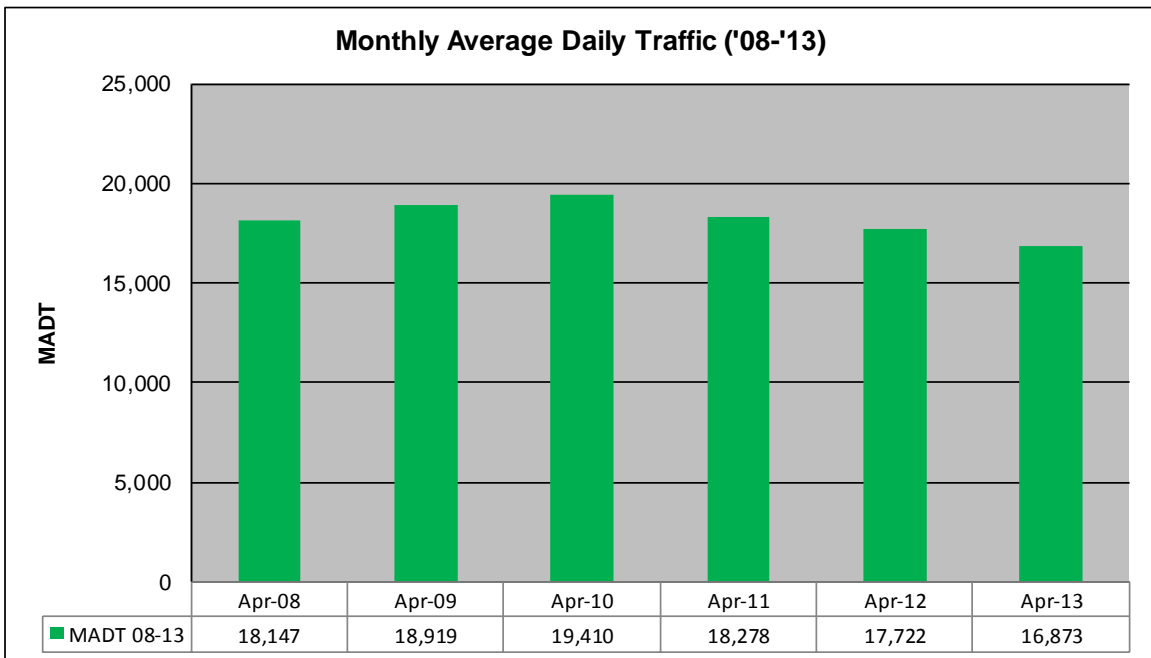
MONTHLY REPORT, STATION NO. 388 (ATR)

APRIL 2013

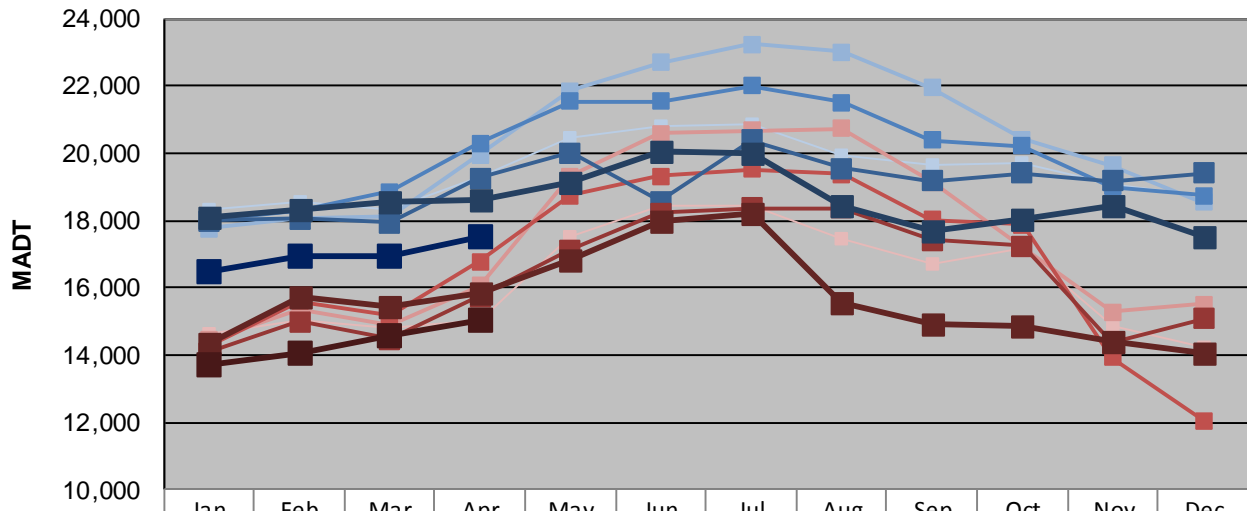
| | | |
|--|---------------------------|-------------------------------------|
| Station Measurement: VOLUME/SPEED/CLASS | | |
| Route: TH 8 | Route Direction: N/S | Lanes: 2 |
| County: Chisago | Closest City: Forest Lake | |
| Functional Class: Urban Other Principal Arterial | | |
| Location: E OF MSAS121 (GREENWAY RD), N OF FOREST LAKE | | |
| Ref Post: 002+00.330 | True Mile: 2.282 | Sequence No. 6783 |
| Volume: 506,197 | | MADT: 16,873 |
| Weekday (M-F) MADT: 17,534 | | Weekend (Sa-Su) MADT: 15,022 |



Note: Decrease in traffic June 2011 and September 2012 due to construction on TH 8



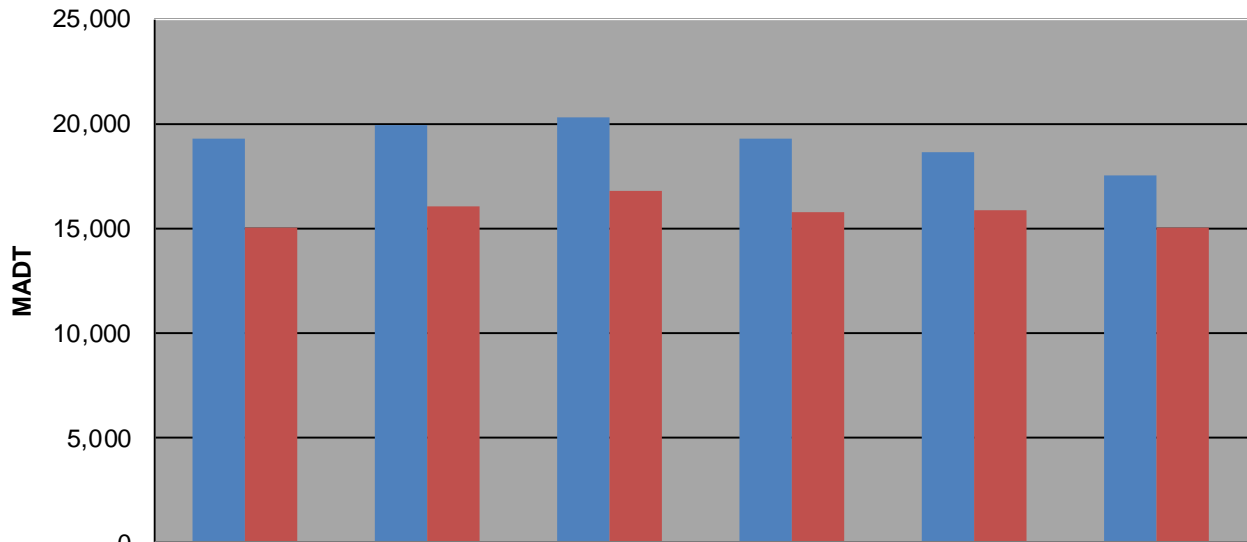
Weekday (WD)/Weekend (WE) Monthly Average Daily Traffic



| | Jan | Feb | Mar | Apr | May | Jun | Jul | Aug | Sep | Oct | Nov | Dec |
|--------|--------|--------|--------|--------|--------|--------|--------|--------|--------|--------|--------|--------|
| '08 WD | 18,324 | 18,556 | 18,306 | 19,288 | 20,438 | 20,804 | 20,872 | 19,932 | 19,670 | 19,732 | 19,058 | 18,726 |
| '08 WE | 14,610 | 15,032 | 14,784 | 15,022 | 17,534 | 18,448 | 18,418 | 17,446 | 16,682 | 17,166 | 14,866 | 14,226 |
| '09 WD | 17,750 | 18,058 | 18,094 | 19,964 | 21,844 | 22,678 | 23,234 | 23,018 | 21,936 | 20,422 | 19,634 | 18,546 |
| '09 WE | 14,454 | 15,348 | 14,874 | 16,056 | 19,330 | 20,600 | 20,686 | 20,736 | 19,150 | 17,176 | 15,284 | 15,522 |
| '10 WD | 18,000 | 18,272 | 18,848 | 20,300 | 21,542 | 21,546 | 22,004 | 21,518 | 20,376 | 20,220 | 18,998 | 18,742 |
| '10 WE | 14,244 | 15,606 | 15,152 | 16,780 | 18,744 | 19,312 | 19,512 | 19,374 | 18,018 | 17,878 | 13,912 | 12,042 |
| '11 WD | 18,004 | 18,040 | 17,934 | 19,254 | 20,006 | 18,574 | 20,372 | 19,538 | 19,162 | 19,412 | 19,160 | 19,394 |
| '11 WE | 14,076 | 14,986 | 14,478 | 15,730 | 17,126 | 18,224 | 18,378 | 18,358 | 17,400 | 17,238 | 14,352 | 15,080 |
| '12 WD | 18,072 | 18,302 | 18,538 | 18,602 | 19,116 | 20,046 | 19,976 | 18,418 | 17,692 | 18,020 | 18,444 | 17,530 |
| '12 WE | 14,352 | 15,712 | 15,434 | 15,862 | 16,842 | 17,972 | 18,224 | 15,576 | 14,928 | 14,850 | 14,394 | 14,060 |
| '13 WD | 16,484 | 16,922 | 16,936 | 17,534 | | | | | | | | |
| '13 WE | 13,708 | 14,072 | 14,568 | 15,022 | | | | | | | | |

Note: 'Weekday' defined as Monday-Friday, 'Weekend' defined as Saturday-Sunday

Weekday/Weekend Monthly Average Daily Traffic ('08-'13)



| | Apr-08 | Apr-09 | Apr-10 | Apr-11 | Apr-12 | Apr-13 |
|---------|--------|--------|--------|--------|--------|--------|
| Weekday | 19,288 | 19,964 | 20,300 | 19,254 | 18,602 | 17,534 |
| Weekend | 15,022 | 16,056 | 16,780 | 15,730 | 15,862 | 15,022 |