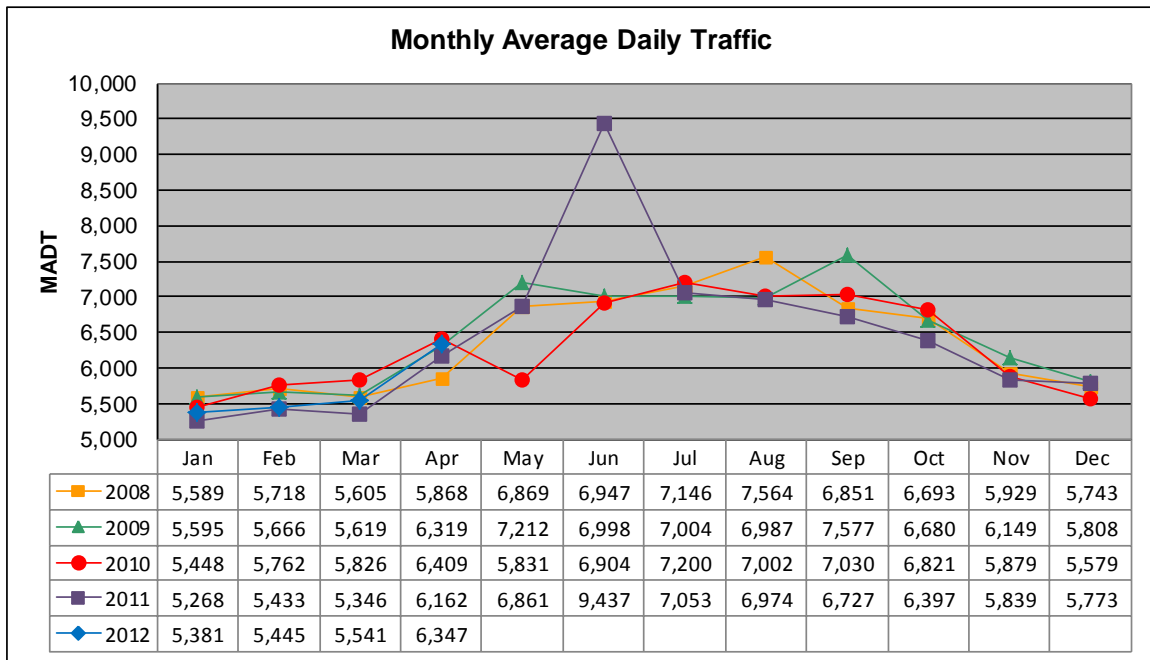


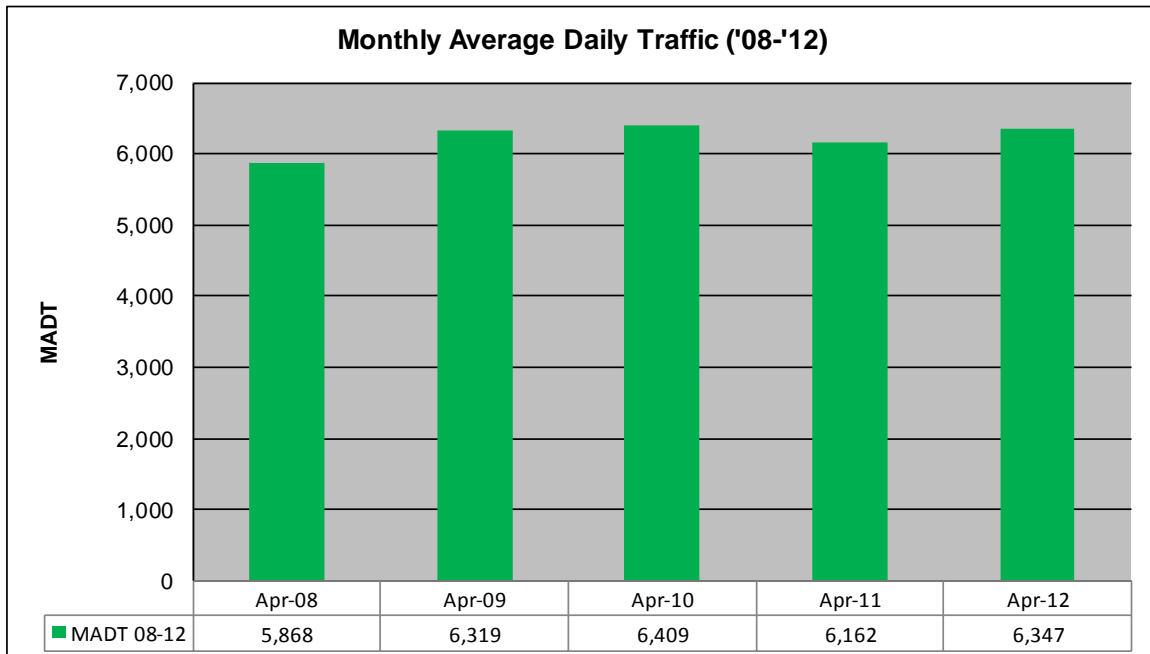
# MONTHLY REPORT, STATION NO. 386 (ATR)

## APRIL 2012

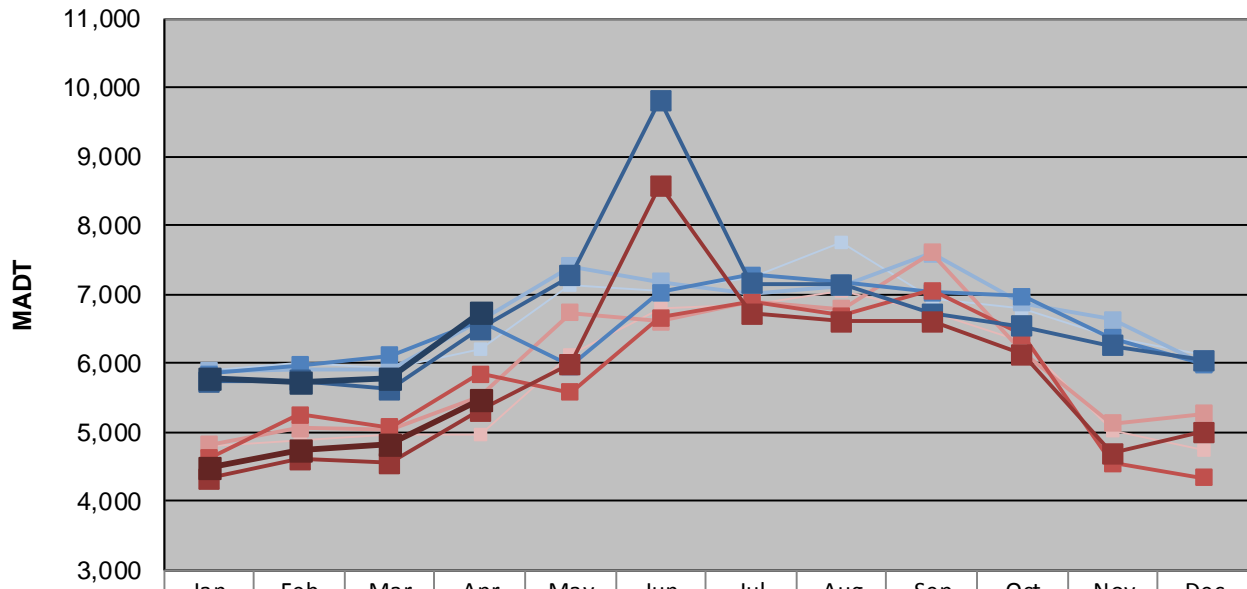
Station Measurement: VOLUME		
Route: TH 97	Route Direction: N/S	Lanes: 2
County: Washington		Closest City: Scandia
Functional Class: Rural Minor Arterial		
Location: E OF CSAH1 (LOFTON AVE N) IN SCANDIA		
Ref Post: 008+00.844	True Mile: 8.807	Sequence No. 9875
<b>Volume: 190,400</b>		<b>MADT: 6,347</b>
<b>Weekday (M-F) MADT: 6,744</b>		<b>Weekend (Sa-Su) MADT: 5,482</b>



Note: Decrease in traffic May 2010 due to construction on I-35... Increase in traffic June 2011 due to detours from TH 8 and I-35



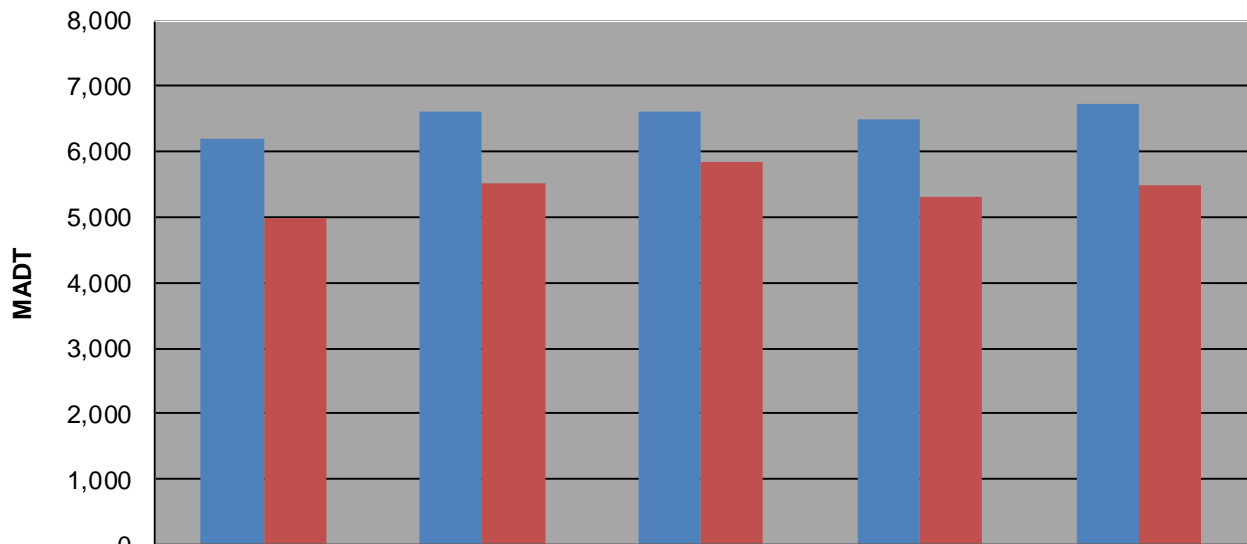
### Weekday (WD)/Weekend (WE) Monthly Average Daily Traffic



	Jan	Feb	Mar	Apr	May	Jun	Jul	Aug	Sep	Oct	Nov	Dec
'08 WD	5,888	6,006	5,924	6,192	7,132	7,046	7,248	7,764	6,936	6,794	6,378	6,114
'08 WE	4,782	4,882	4,974	4,970	6,128	6,782	6,858	7,054	6,726	6,318	5,032	4,738
'09 WD	5,888	5,908	5,898	6,612	7,402	7,186	7,000	7,106	7,594	6,868	6,626	6,002
'09 WE	4,822	5,060	5,040	5,506	6,732	6,598	6,902	6,782	7,606	6,154	5,124	5,268
'10 WD	5,840	5,964	6,110	6,598	5,950	7,020	7,274	7,164	7,024	6,972	6,370	5,984
'10 WE	4,616	5,260	5,066	5,844	5,582	6,654	6,880	6,690	7,050	6,402	4,546	4,338
'11 WD	5,728	5,752	5,620	6,486	7,266	9,814	7,154	7,138	6,720	6,528	6,248	6,044
'11 WE	4,326	4,608	4,556	5,314	5,978	8,570	6,710	6,602	6,608	6,126	4,688	4,994
'12 WD	5,784	5,734	5,792	6,744								
'12 WE	4,500	4,740	4,832	5,482								

Note: 'Weekday' defined as Monday-Friday, 'Weekend' defined as Saturday-Sunday

### Weekday/Weekend Monthly Average Daily Traffic ('08-'12)



	Apr-08	Apr-09	Apr-10	Apr-11	Apr-12
Weekday	6,192	6,612	6,598	6,486	6,744
Weekend	4,970	5,506	5,844	5,314	5,482