

2012 Publication Traffic Volumes - Koochiching County - Sheet 2 of 4



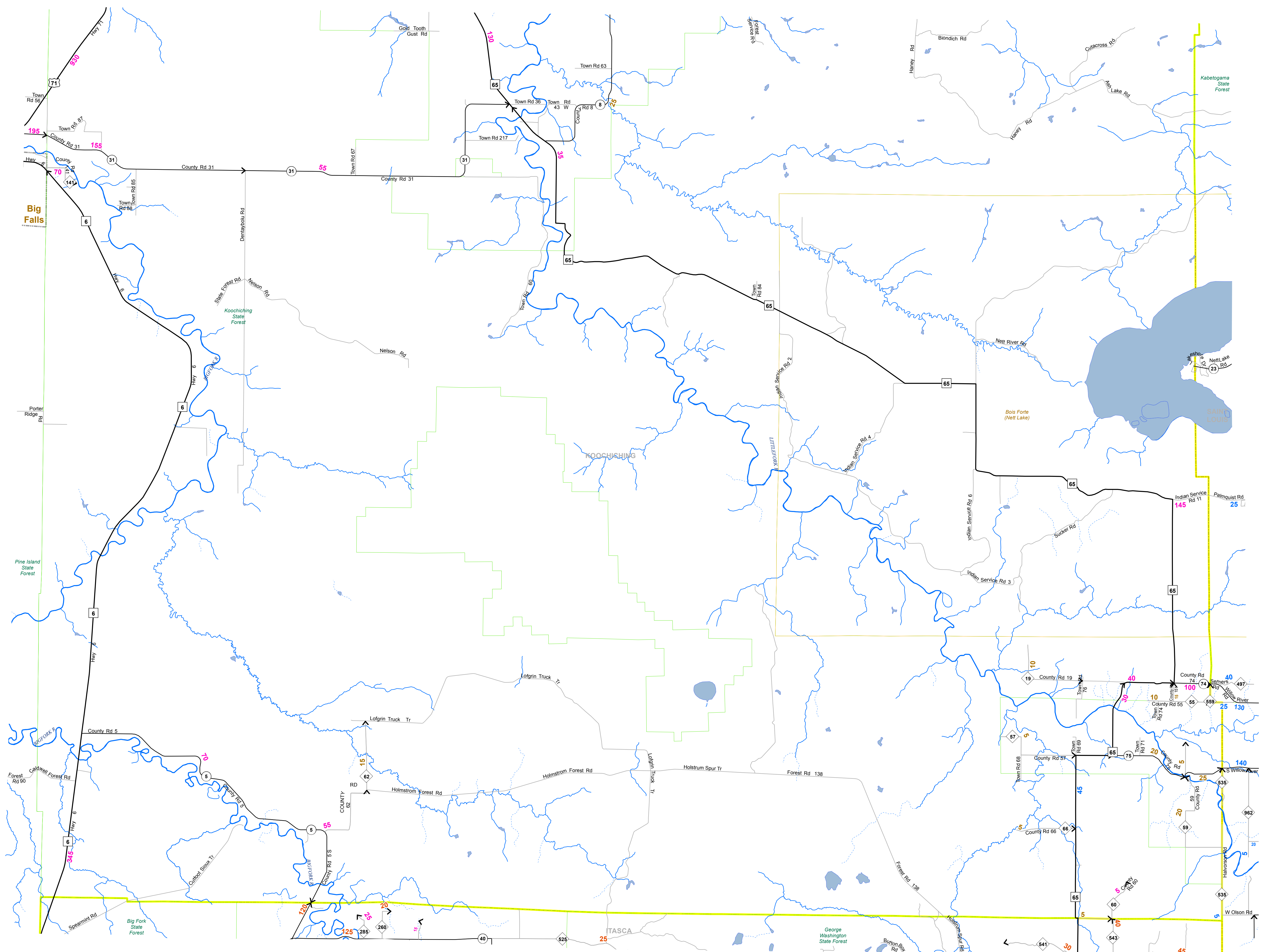
Numerals Indicate Average Annual Daily Traffic (AADT) Volumes on Designated Roads

Traffic Volumes are Subject to Variability and Construction Effects
For More Info Visit:
<http://www.dot.state.mn.us/traffic/data/col-methods.html#cp>

Additional Program Information:
Minnesota Department of Transportation
Office of Transportation Data and Analysis
Traffic Volume Program
<http://www.dot.state.mn.us/traffic/data/index.html>

MAP LEGEND

- AADT Year
 - 2012 2011
 - 2010 2009
 - 2008 and older
- Interstate 94 →
- US Highway 169 →
- MN Highway 55 →
- CSAH 55 →
- MSAS →
- County Road 55 →
- Other Roads
- Railroads
- Cities
- COUNTIES
- Lakes
- Rivers
- Perennial Streams
- Ditches
- National Forests
- National Parks
- Tribal Gov'ts
- State Forests
- State Parks



To view this data using an online interactive map please visit: <http://dotapp7.dot.state.mn.us/geocortex/essentials/web/viewer.aspx?site=TrafficData>

Map Source:
Minnesota Department of Transportation
Office of Transportation Data and Analysis
Traffic Volume Program
2011 AADT Product
<http://www.dot.state.mn.us/traffic/data/data-products.html>