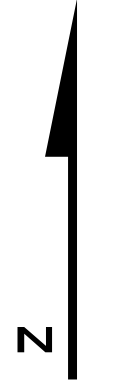
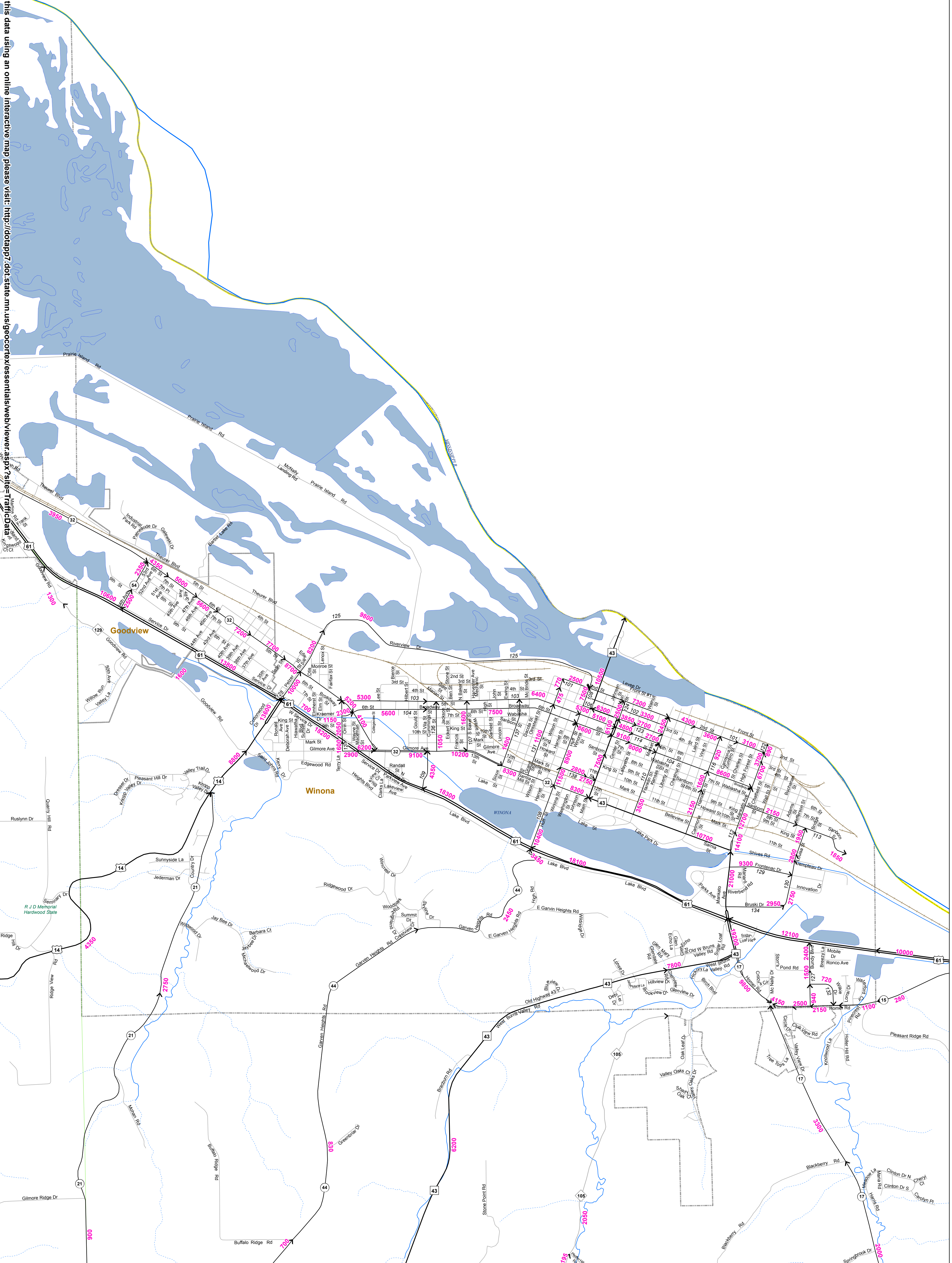


To view this data using an online interactive map please visit: <http://dotapps7.dot.state.mn.us/geocortex/essentials/webViewer.aspx?site=TrafficData>



0 0.25 MI.

Numerals Indicate Average Annual Daily Traffic (AADT) Volumes on Designated Roads

Traffic Volumes are Subject to Variability and Construction Effects

For More Info Visit:

<http://www.dot.state.mn.us/trafficdata/cell-methods.html>
<http://www.dot.state.mn.us/trafficdata/index.html>

MAP LEGEND

- AADT Year
 - 2011 2010
 - 2009 2008
 - 2007 and older
- Interstate
- US Highway
- MN Highway
- CSAH
- MSAS
- County Road
- Other Roads
- Railroads
- Cities
- COUNTIES
- Lakes
- Rivers
- Perennial Streams
- Ditches
- National Forests
- National Parks
- Tribal Gov'ts
- State Forests
- State Parks

Map Source:
 Minnesota Department of Transportation
 Office of Transportation Data and Analysis
 Traffic Volume Program
 2011 AADT Product
<http://www.dot.state.mn.us/trafficdata/data-products.html>