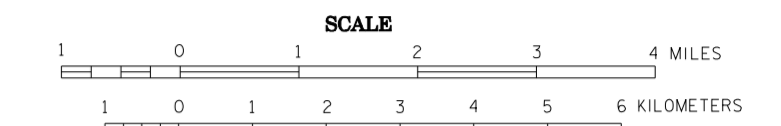


2009 TH VOLUMES  
GENERAL HIGHWAY MAP  
CASS  
COUNTY  
MINNESOTA

PREPARED BY THE  
MINNESOTA DEPARTMENT OF TRANSPORTATION  
OFFICE OF TRANSPORTATION DATA & ANALYSIS  
IN COOPERATION WITH  
U.S. DEPARTMENT OF TRANSPORTATION  
FEDERAL HIGHWAY ADMINISTRATION



2009  
BASIC DATA - 1977\*

Projections  
Minnesota Coordinate System  
Central Zone  
Lambert Conformal Conic  
North American Datum  
of 1983



LEGEND

ROAD AND ROADWAY FEATURES	NAVIGATION
PROJECTED ROAD	BASE LINES ON NATURAL OBSTACLES
UNIMPROVED ROAD	SHIP LINES ON TRAILING LINES
GRAVEL AND GRAVEL ROAD	DOCK, PIER OR LANDING
SOIL SURFACE ROAD	NAVIGABLE STREAM
GRAVEL OR STONE ROAD	NAVIGABLE STREAM WITH LOCK
BITUMINOUS ROAD	LANDMARK LIGHT BEACON
PAVED ROAD	LANDMARK LIGHTHOUSE
DIVIDED ROAD	
TRUNK HIGHWAY UNDER CONSTRUCTION	
ROADS UNDER CONSTRUCTION OR IMPROVEMENT	
ROADS UNDER CONSTRUCTION OR IMPROVEMENT	
ROADS UNDER CONSTRUCTION OR IMPROVEMENT	
ROADS UNDER CONSTRUCTION OR IMPROVEMENT	

TRAFFIC VOLUMES ARE SUBJECT TO  
VARIABILITY AND CONSTRUCTION EFFECTS

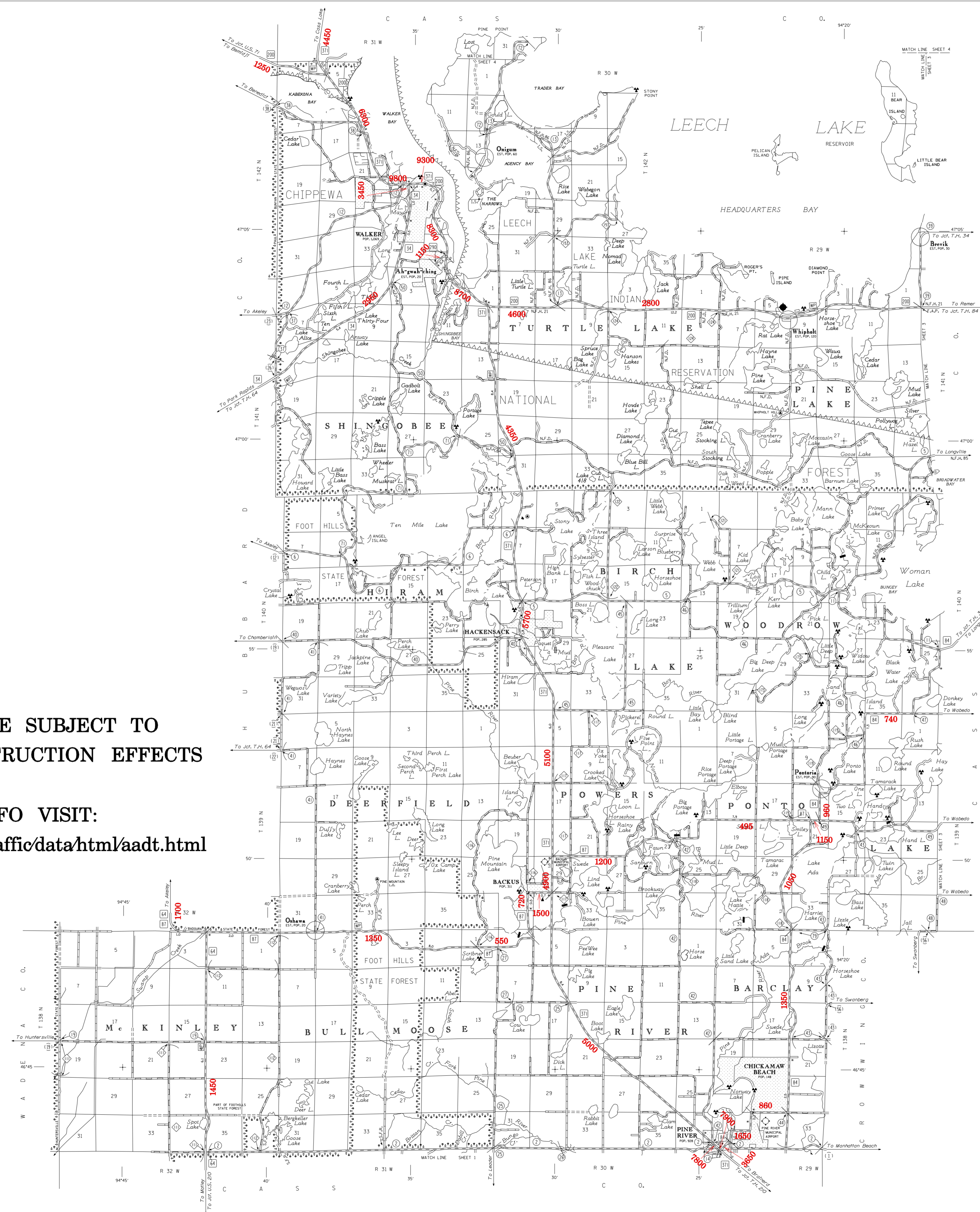
FOR MORE INFO VISIT:  
<http://www.dot.state.mn.us/traffic/data/html/aadt.html>

VOLUMES PREPARED BY  
THE OFFICE OF  
TRANSPORTATION DATA & ANALYSIS

NUMERALS INDICATE AVERAGE DAILY  
TRAFFIC VOLUMES ON DESIGNATED ROADS.

TRUNK HIGHWAY ROUTES ARE 2009 A.A.D.T. VOLUMES

FOR DESIGNATED ROADS :  
/ = SEGMENT ENDPOINT FOR ALL  
ROADS INTERSECTED BY HATCH  
( = SEGMENT ENDPOINT ONLY FOR  
ROAD SEPARATED FROM INTERSECTING  
ROAD BY ARC



\*NOTE: ALL FEATURES EXCEPT TOWNSHIP ROADS AND  
CULTURE ARE CURRENT AS OF JANUARY 1, 2009.  
NOTE: FOR DETAIL OF COUNTY STATE AID HIGHWAYS AND COUNTY  
ROADS IN INCORPORATED PLACES, SEE MAPS OF MANIPULATIONS.

