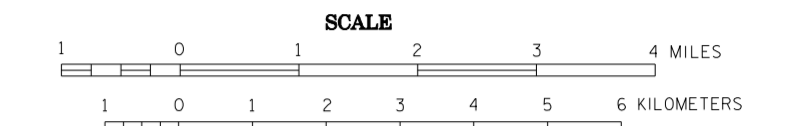


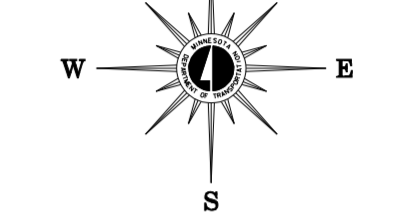
2009 TH VOLUMES  
 GENERAL HIGHWAY MAP  
**BENTON COUNTY**  
 MINNESOTA

PREPARED BY THE  
 MINNESOTA DEPARTMENT OF TRANSPORTATION  
 OFFICE OF TRANSPORTATION DATA & ANALYSIS  
 IN COOPERATION WITH  
 U.S. DEPARTMENT OF TRANSPORTATION  
 FEDERAL HIGHWAY ADMINISTRATION



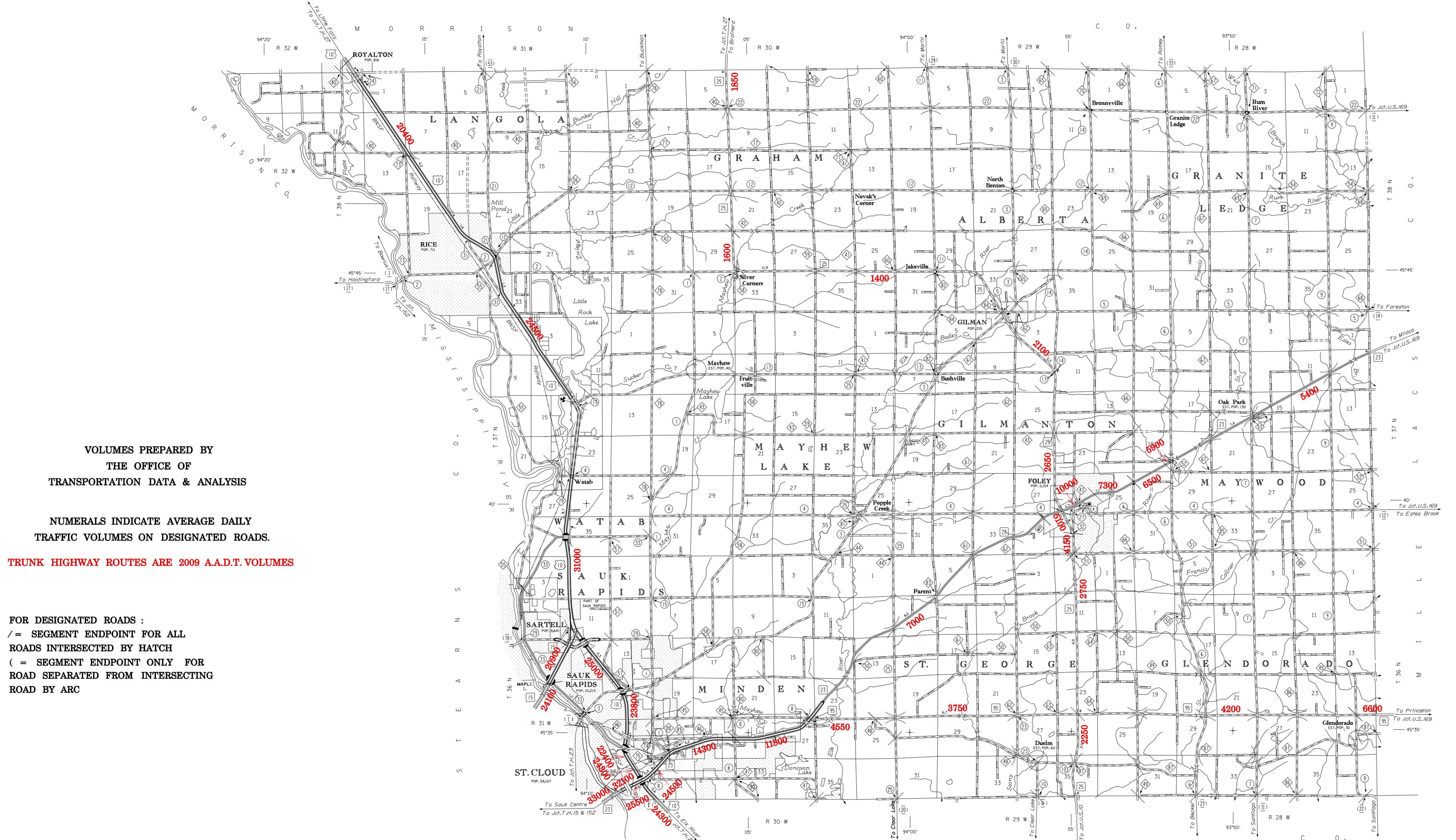
2009  
 BASIC DATA - 1977\*

Projections  
 Minnesota Coordinate System  
 Central Zone  
 Lambert Conformal Conic  
 North American Datum  
 of 1983



**LEGEND**

ROAD AND ROADWAY FEATURES	NAVIGATION
PROJECTED ROAD	BASE LINES ON NATURAL CHANNELS
PRIMITIVE ROAD	SHIP LINES ON PLAIN LAKES
UNIMPROVED ROAD	SHOALS, PIER OR LANDING
GRAVEL OR GRAVEL ROAD	NAVIGABLE STREAM
GRAVEL ROAD	LANDMARK LIGHT BEACON
GRAVEL ROAD UNDER CONSTRUCTION	LIGHTHOUSE
ROAD UNDER CONSTRUCTION	
ROAD WITHIN MANICIPALITIES AND	
PRIMITIVE ROAD	
POINTS BETWEEN WHICH DISTANCES	
ARE INDICATED BY THESE	
CRACK SEPARATION	
FULL TRAFFIC INTERCHANGE	
PARTIAL TRAFFIC INTERCHANGES	
INDICATING TRAFFIC MOVEMENT	
ROAD SYSTEM DESIGNATIONS	CONSERVATION
INTERSTATE FROM HIGHWAY	FOREST RANGER STATION
STATE NUMBERED FROM HIGHWAY	GUARD OR BRIDGE STATION
COUNTY STATE AID HIGHWAY	NOT PERMANENTLY OCCUPIED
COUNTY STATE AID IN	SEPARATION OF LANDS
BOUNDING COUNTY	PERMANENT ELEVATION
TERMINATION OF DESIGNATED ROUTE	SHALL PAVES BY STATE OR COUNTY
	MANICIPALITY OR WATERWAY
	PUBLIC ACCESS POINT
ROAD SYSTEM DESIGNATIONS	RECREATION
INTERSTATE EAST	GOLF COURSE OR COUNTRY CLUB
GREAT RIVER ROAD	GOLF LINK
FEDERAL AID INTERSTATE SYSTEM	ATHLETIC FIELD
NATIONAL FOREST HIGHWAY	MOVEMENT FROM
NATIONAL FOREST HIGHWAY	PISTON ROAD
INDIAN SERVICE ROAD	TRAIL OR GROUP OF BUILDINGS CLOSELY SPACED
STATE STREET ROAD	NUMBER INDICATES THE NUMBER
STATE PARK ROAD	INDICATES NUMBER OF EACH UNIT
	SHOWS OUT OF POSITION
RAILROADS	FARM AND DWELLING UNITS
RAILROAD ANY NUMBER OF TRACKS BY A SINGLE	FARM UNIT
OPERATING COMPANY OR BY TRAINS OF ANOTHER	BARRACKS OR DORMITORIES FOR STUDENTS
CARRIED UNDER THROUGH RIGHTS	WORKSHOP, WAREHOUSE, ETC.
RAILROADS IN AUTHORITY POSITION OR MORE TRACKS	SEASONAL DWELLING
OR SEPARATELY OPERATED COMPANIES OR	TRAIL OR GROUP OF BUILDINGS CLOSELY SPACED
ADJACENT RIGHTS OF WAY	NUMBER INDICATES THE NUMBER
RAILROAD STATION	INDICATES NUMBER OF EACH UNIT
GRADE CROSSING	SHOWS OUT OF POSITION
INDICATES NUMBER OF TRACKS	
OVERPASS HIGHWAY ABOVE	
ARWAYS	INDUSTRIAL
MILITARY FIELD	FACTORY OR INDUSTRIAL PLANT
COMMERCIAL OR MANICIPAL FIELD	SAW
COMPLETE FACILITIES	STORAGE TANKS, OIL OR GAS
LIMITED FACILITIES	BEET SUMP
LANDING AREA OR STRIP	STOCK FEEDLOT
SCALELINE BASE	QUARRY, LUMBERYARD OR CHEESE FACTORY
ARWAY LIGHT BEACON, GENERAL	WAREHOUSE
RADIO RANGE STATION	
STRUCTURES	COMMERCIAL
General Symbols (over 20' high)	STORE OR SMALL BODED ESTABLISHMENT
General Symbols (20' high or over)	HOTEL
General Symbols (20' high or over)	TOURIST COURT
General Symbols (20' high or over)	RESTAURANT
General Symbols (20' high or over)	GREENHOUSE
General Symbols (20' high or over)	
BOUNDARIES	PUBLIC SERVICE FACILITIES
NATIONAL OR STATE	POST OFFICE
COUNTY	FIRE STATION
CITY, TOWNSHIP, TOWNSHIP (S.L. LAND)	MUSEUM
SECTION LINE	PUBLIC LIBRARY
CONGESTED AREA	SCHOOL
NATIONAL OR STATE PARK	ALL-WEATHER PORT OF ENTRY
NATIONAL OR STATE FOREST	RADIO STATION
INDIAN RESERVATION	SEMI-CONDUCTOR PLANT
GAME REFUGE	RAILROAD HOME
WATERWAY AREA FEDERAL	HOSPITAL
WATERWAY AREA FEDERAL	UNIVERSITY
WITH LINE BETWEEN ADJOINING SHEETS	CONVENTIONAL INSTITUTION
OF THE SAME COUNTY	
DRAINAGE	CITY CENTERS
INTERMITTENT STREAM	STATE CAPITAL
NARROW STREAM	COUNTY SEAT
WIDE STREAM	CITY CENTER
WASH OR SWAMP LAND	INCORPORATED CITY (GENERALIZED)
DRAINAGE BENCH	UNINCORPORATED COMMUNITY
LINE OR POND	
MISCELLANEOUS MAP FEATURES	
CHURCH, OTHER RELIGIOUS INSTITUTIONS	
CHURCH WITH SEXTON	
PARSONAGE, RECTORY, CHURCH	
MONUMENT, TOMB	
GRAND PIT	
GRAVEYARD	
SCRAP METAL JUNKYARD	
SCRAP METAL JUNKYARD	
STATE PATROL SUBSTATION	
DEPARTMENT OF TRANSPORTATION DISTRICT OFFICE	
WATER TOWER	
VALVE HOUSE, PETROLEUM PRODUCTS	
CRUISE OIL OR WATER	
NATURAL GAS, PETROLEUM PRODUCTS	
PIPELINE, NATURAL GAS	
PIPELINE, PETROLEUM PRODUCTS	
PIPELINE, CRUDE OIL	
TRANSMISSION LINE (33KV OR OVER)	
ROAD PUMP STATION	
TRANSMISSION STATION	
LOCATION OF TRANSMISSION STATION	
LATITUDE AND LONGITUDE INTERSECTION	
HISTORIC SITE, STATE OR NATIONAL	
OPEN TO THE PUBLIC	



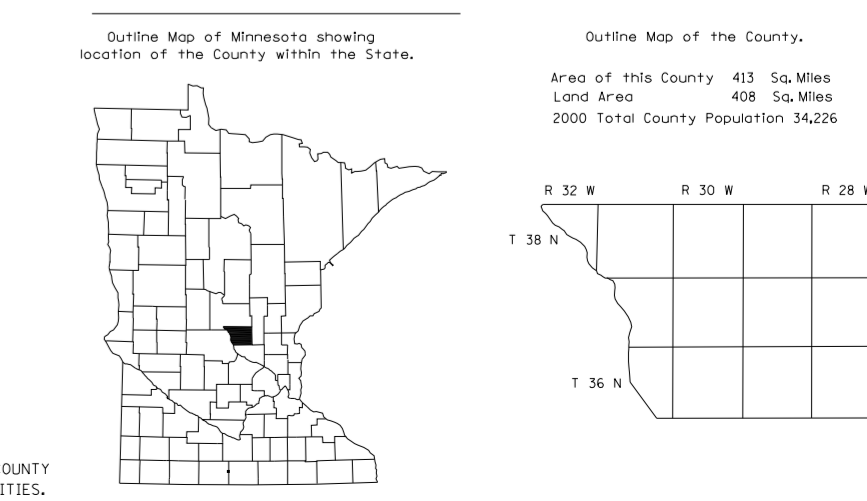
VOLUMES PREPARED BY  
 THE OFFICE OF  
 TRANSPORTATION DATA & ANALYSIS

NUMERALS INDICATE AVERAGE DAILY  
 TRAFFIC VOLUMES ON DESIGNATED ROADS.

TRUNK HIGHWAY ROUTES ARE 2009 A.A.D.T. VOLUMES

FOR DESIGNATED ROADS:  
 / = SEGMENT ENDPOINT FOR ALL  
 ROADS INTERSECTED BY HATCH  
 ( = SEGMENT ENDPOINT ONLY FOR  
 ROAD SEPARATED FROM INTERSECTING  
 ROAD BY ARC

TRAFFIC VOLUMES ARE SUBJECT TO VARIABILITY AND CONSTRUCTION EFFECTS  
 FOR MORE INFO VISIT: <http://www.dot.state.mn.us/traffic/data/html/aadt.html>



\*NOTE: ALL FEATURES EXCEPT TOWNSHIP ROADS AND  
 CULTURE ARE CURRENT AS OF JANUARY 1, 2009.  
 NOTE: FOR DETAIL OF COUNTY STATE AID HIGHWAYS AND COUNTY  
 ROADS IN INCORPORATED PLACES, SEE MAPS OF MANICIPALITIES.