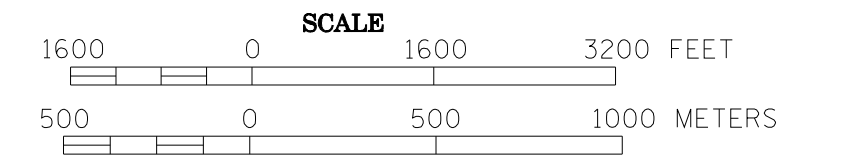


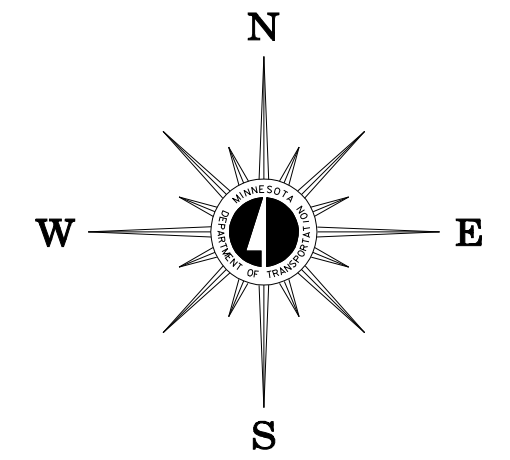
2009 TH VOLUMES

MUNICIPALITY OF WORTHINGTON

PREPARED BY THE
MINNESOTA DEPARTMENT OF TRANSPORTATION
 OFFICE OF TRANSPORTATION DATA & ANALYSIS
 IN COOPERATION WITH
U.S. DEPARTMENT OF TRANSPORTATION
 FEDERAL HIGHWAY ADMINISTRATION



2009
 BASIC DATA - 1977



LEGEND

- INTERSTATE TRUNK HIGHWAY..... (I-35)
- U.S. TRUNK HIGHWAY..... (10)
- STATE TRUNK HIGHWAY..... (55)
- COUNTY STATE AID HIGHWAY..... (23)
- COUNTY ROAD..... (5)
- CORPORATE LIMITS.....
- PUBLIC ROAD.....
- PRIVATE ROAD.....

MUNICIPAL STATE AID STREET SYSTEM

LEGEND

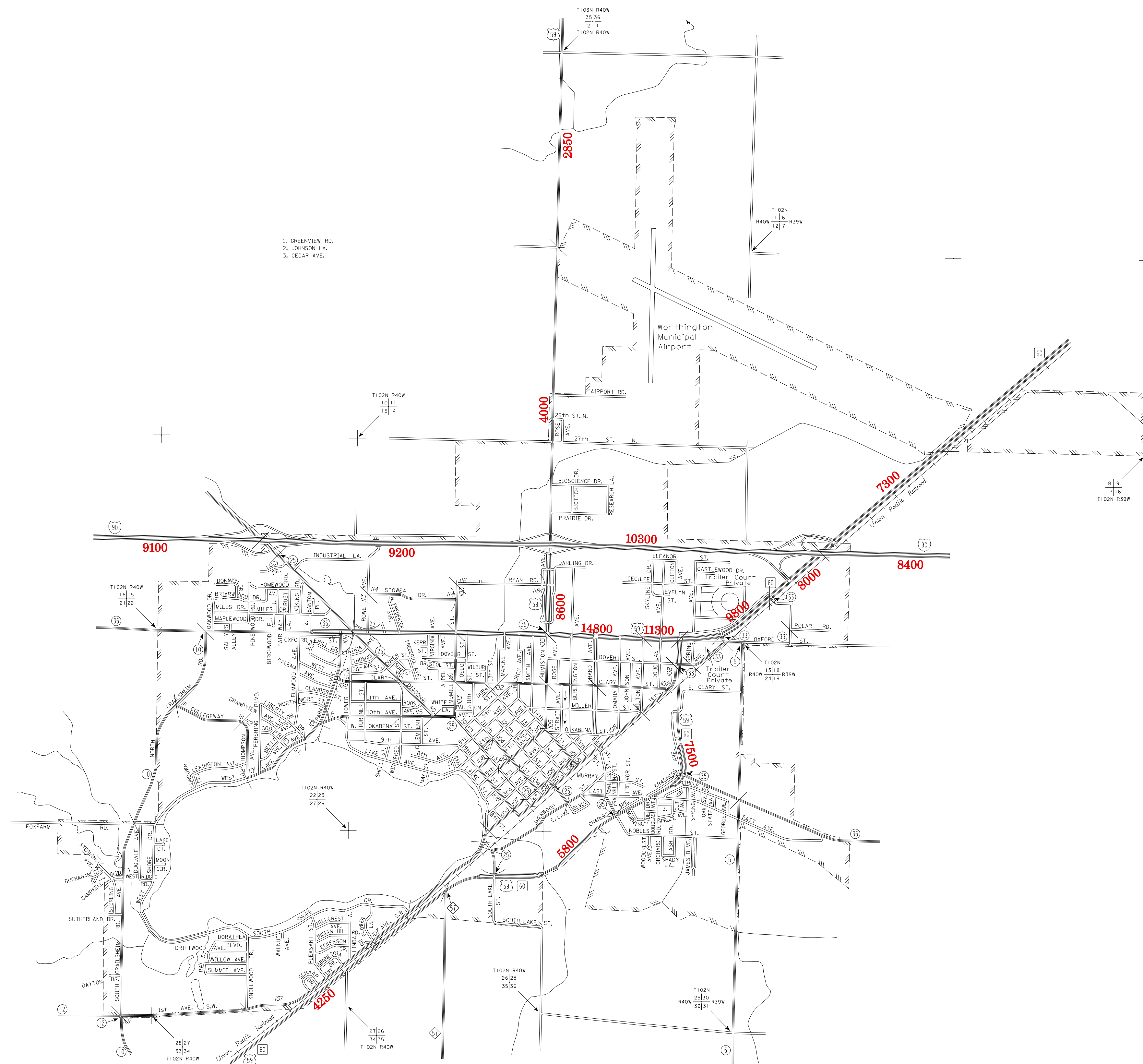
- MUNICIPAL COUNTY STATE AID STREET.....
- MUNICIPAL STATE AID STREET.....
- COUNTY STATE AID HIGHWAY.....
- COUNTY ROAD.....
- TRUNK HIGHWAY.....

VOLUMES PREPARED BY
 THE OFFICE OF
 TRANSPORTATION DATA & ANALYSIS

NUMERALS INDICATE AVERAGE DAILY
 TRAFFIC VOLUMES ON DESIGNATED ROADS.

TRUNK HIGHWAY ROUTES ARE 2009 A.A.D.T. VOLUMES

FOR DESIGNATED ROADS :
 / = SEGMENT ENDPOINT FOR ALL
 ROADS INTERSECTED BY HATCH
 (= SEGMENT ENDPOINT ONLY FOR
 ROAD SEPARATED FROM INTERSECTING
 ROAD BY ARC



1. GREENVIEW RD.
2. JOHNSON LA.
3. CEDAR AVE.