

**2006 TRUNK HIGHWAY VOLUMES
GENERAL HIGHWAY MAP
TODD
COUNTY
MINNESOTA**

PREPARED BY THE TRANSPORTATION
DIVISION OF THE
MINNESOTA DEPARTMENT OF TRANSPORTATION
IN COOPERATION WITH
U.S. DEPARTMENT OF TRANSPORTATION
FEDERAL BUREAU OF SURVEY

DATE: MAY 1977
2006

SCALE: AS SHOWN

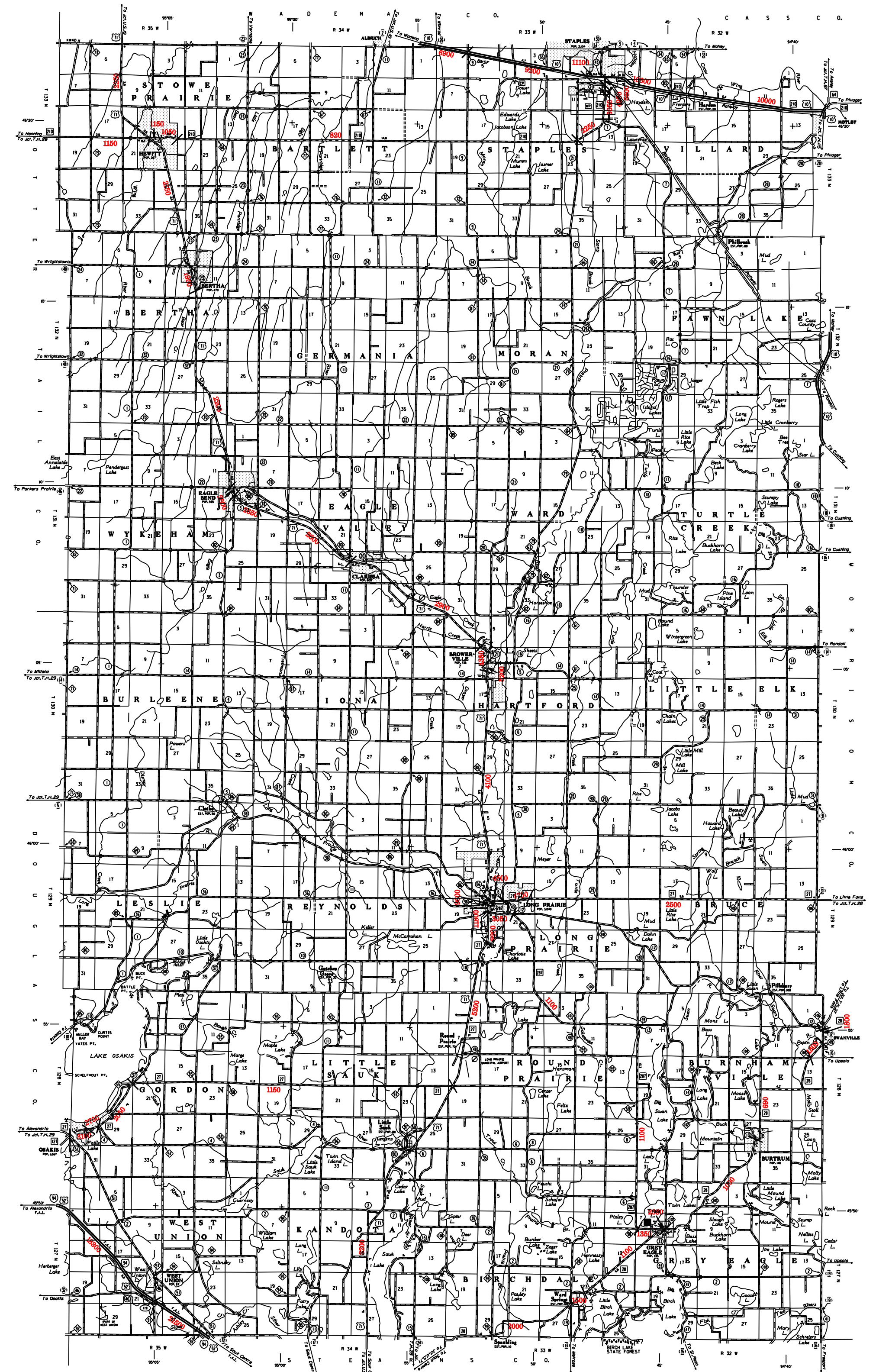
NORTH ARROW

LEGEND

	TRUNK HIGHWAY
	STATE HIGHWAY
	COUNTY ROAD
	DESIGNATED ROAD
	SEGMENT ENDPOINT
	ROAD SEPARATED FROM INTERSECTING ROAD
	ROAD SEPARATED FROM INTERSECTING ROAD BY AIC
	LAKE
	STREAM
	WATERWAY
	RAILROAD
	AIRPORT
	CEMETERY
	SCHOOL
	CHURCH
	PUBLIC BUILDING
	COMMERCIAL BUILDING
	RESIDENTIAL BUILDING
	INDUSTRIAL BUILDING
	UTILITY POLE
	TELEPHONE POLE
	POWER POLE
	WATER TOWER
	WELL
	WINDMILL
	WINDMILL TOWER
	WINDMILL TOWER WITH WINDMILL
	WINDMILL TOWER WITH WINDMILL AND TOWER
	WINDMILL TOWER WITH WINDMILL AND TOWER AND WINDMILL
	WINDMILL TOWER WITH WINDMILL AND TOWER AND WINDMILL AND TOWER
	WINDMILL TOWER WITH WINDMILL AND TOWER AND WINDMILL AND TOWER AND WINDMILL

TODD COUNTY MINNESOTA

77



VOLUMES PREPARED BY
THE OFFICE OF
TRANSPORTATION DATA & ANALYSIS

NUMBERS INDICATE AVERAGE DAILY
TRAFFIC VOLUMES ON DESIGNATED ROADS.
TRUNK HIGHWAY ROUTES ARE SHOWN AS LIGHT VOLUMES.

FOR DESIGNATED ROADS:
/ - SEGMENT ENDPOINT FOR ALL
ROADS INTERSECTED BY LARGER
ROADS SEPARATED FROM INTERSECTING
ROAD BY AIC

3000 TOWNSHIP MAP

GENERAL HIGHWAY MAP

77