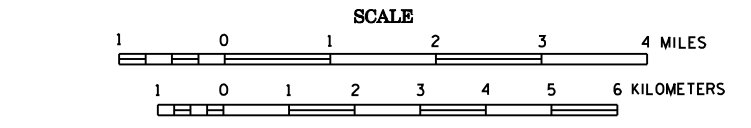
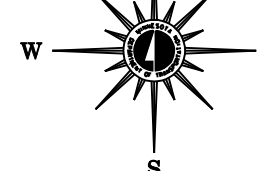


2006 TRUNK HIGHWAY VOLUMES
GENERAL HIGHWAY MAP
STEELE COUNTY
MINNESOTA

PREPARED BY THE
MINNESOTA DEPARTMENT OF TRANSPORTATION
OFFICE OF TRANSPORTATION DATA & ANALYSIS
IN COOPERATION WITH
U.S. DEPARTMENT OF TRANSPORTATION
FEDERAL HIGHWAY ADMINISTRATION

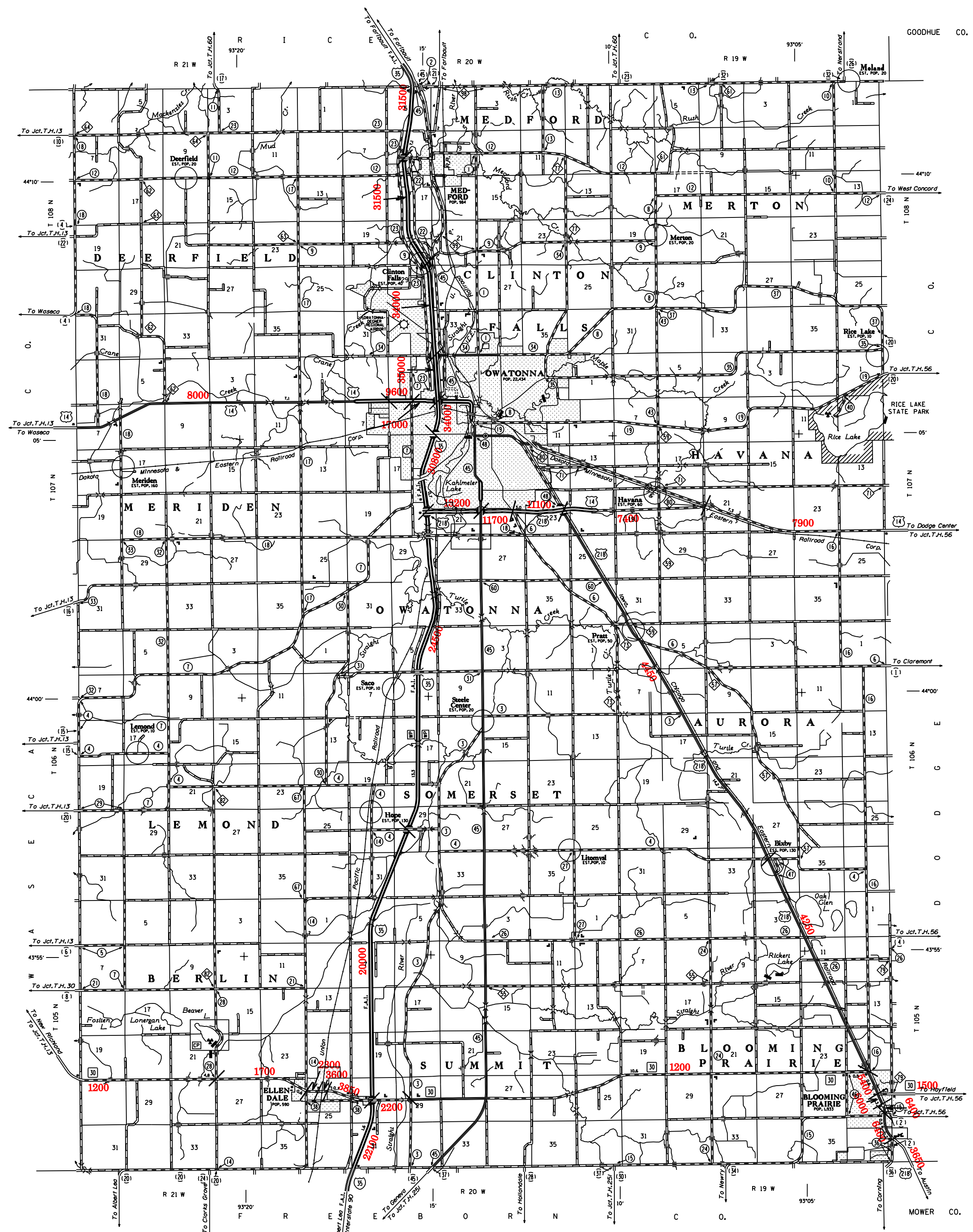


2006
BASIC DATA - 1977
Projection: Minnesota Coordinate System
South Zone
Lambert Conformal Conic
North American Datum of 1983



LEGEND

ROAD AND ROADWAY FEATURES	NAVIGATION	CONSERVATION	RECREATION	FARM AND DWELLING UNITS	INDUSTRIAL	PUBLIC SERVICE FACILITIES	STRUCTURES	CITY CENTERS	MISCELLANEOUS MAP FEATURES	BOUNDARIES	DRAINAGE
PROTECTED ROAD	RAIL LINES ON NATURAL STREAMS	FOREST RANGER STATION	BOAT CLUB	FARM UNIT	FACTORY OR INDUSTRIAL PLANT	POST OFFICE	GENERAL STORE	STATE CAPITAL	COUNTY OTHER RELIGIOUS INSTITUTIONS	NATIONAL OR STATE FOREST	INTERMITTENT STREAM
UNPROTECTED ROAD	RAIL LINES ON MAN-MADE STREAMS	GUARD OR RANGER STATION	BOAT HOUSE	SMALL OTHER FARM	STORAGE TANKS, OIL OR GAS	FIRE STATION	WATER TOWER	COUNTY SEAT	COUNCILS, OTHER RELIGIOUS INSTITUTIONS	STATE FOREST	PERMANENT STREAM
GRADED AND DRAINED ROAD	RAIL LINES ON CANALS	POST OFFICE	BOAT HOUSE	BARN OR OTHER FARM BUILDING OR STRUCTURE FOR STUDENTS, HOSPITALS, LABORATORIES, ETC.	STEEL TOWER, OIL OR GAS	WATER TOWER	WATER TOWER	CITY CENTER	COUNCILS, OTHER RELIGIOUS INSTITUTIONS	COUNTY FOREST	WATER TOWER
GRADED ROAD	RAIL LINES ON CANALS	POST OFFICE	BOAT HOUSE	BARN OR OTHER FARM BUILDING OR STRUCTURE FOR STUDENTS, HOSPITALS, LABORATORIES, ETC.	STEEL TOWER, OIL OR GAS	WATER TOWER	WATER TOWER	CITY CENTER	COUNCILS, OTHER RELIGIOUS INSTITUTIONS	COUNTY FOREST	WATER TOWER
GRADED ROAD	RAIL LINES ON CANALS	POST OFFICE	BOAT HOUSE	BARN OR OTHER FARM BUILDING OR STRUCTURE FOR STUDENTS, HOSPITALS, LABORATORIES, ETC.	STEEL TOWER, OIL OR GAS	WATER TOWER	WATER TOWER	CITY CENTER	COUNCILS, OTHER RELIGIOUS INSTITUTIONS	COUNTY FOREST	WATER TOWER



VOLUMES PREPARED BY
THE OFFICE OF
TRANSPORTATION DATA & ANALYSIS
NUMERALS INDICATE AVERAGE DAILY
TRAFFIC VOLUMES ON DESIGNATED ROADS.
TRUNK HIGHWAY ROUTES ARE 2006 A.A.T.V. VOLUMES.

FOR DESIGNATED ROADS :
/ = SEGMENT ENDPOINT FOR ALL
ROADS INTERSECTED BY HATCH
(= SEGMENT ENDPOINT ONLY FOR
ROAD SEPARATED FROM INTERSECTING
ROAD BY ARC

NOTE: ALL FEATURES EXCEPT TOWNSHIP ROADS AND
CULTURE ARE CURRENT AS OF JANUARY 1, 2006.
NOTE FOR DETAIL OF COUNTY STATE AID HIGHWAYS AND COUNTY
ROADS IN INCORPORATED PLACES, SEE MAPS OF MUNICIPALITIES.

