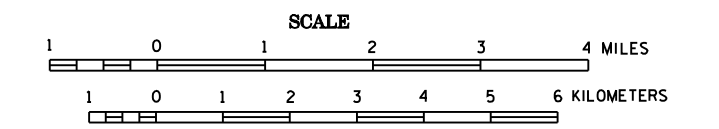


# 2006 TRUNK HIGHWAY VOLUMES GENERAL HIGHWAY MAP RICE COUNTY MINNESOTA

PREPARED BY THE  
MINNESOTA DEPARTMENT OF TRANSPORTATION  
OFFICE OF TRANSPORTATION DATA & ANALYSIS  
IN COOPERATION WITH  
U.S. DEPARTMENT OF TRANSPORTATION  
FEDERAL HIGHWAY ADMINISTRATION

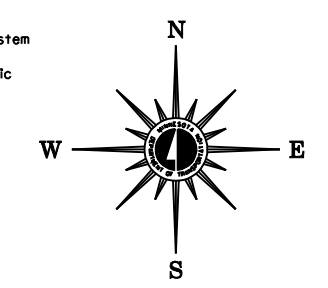


2006

BASIC DATA - 1977\*

Projection:  
Minnesota Coordinate System  
South Zone  
Lambert Conformal Conic

North American Datum  
of 1983



### LEGEND

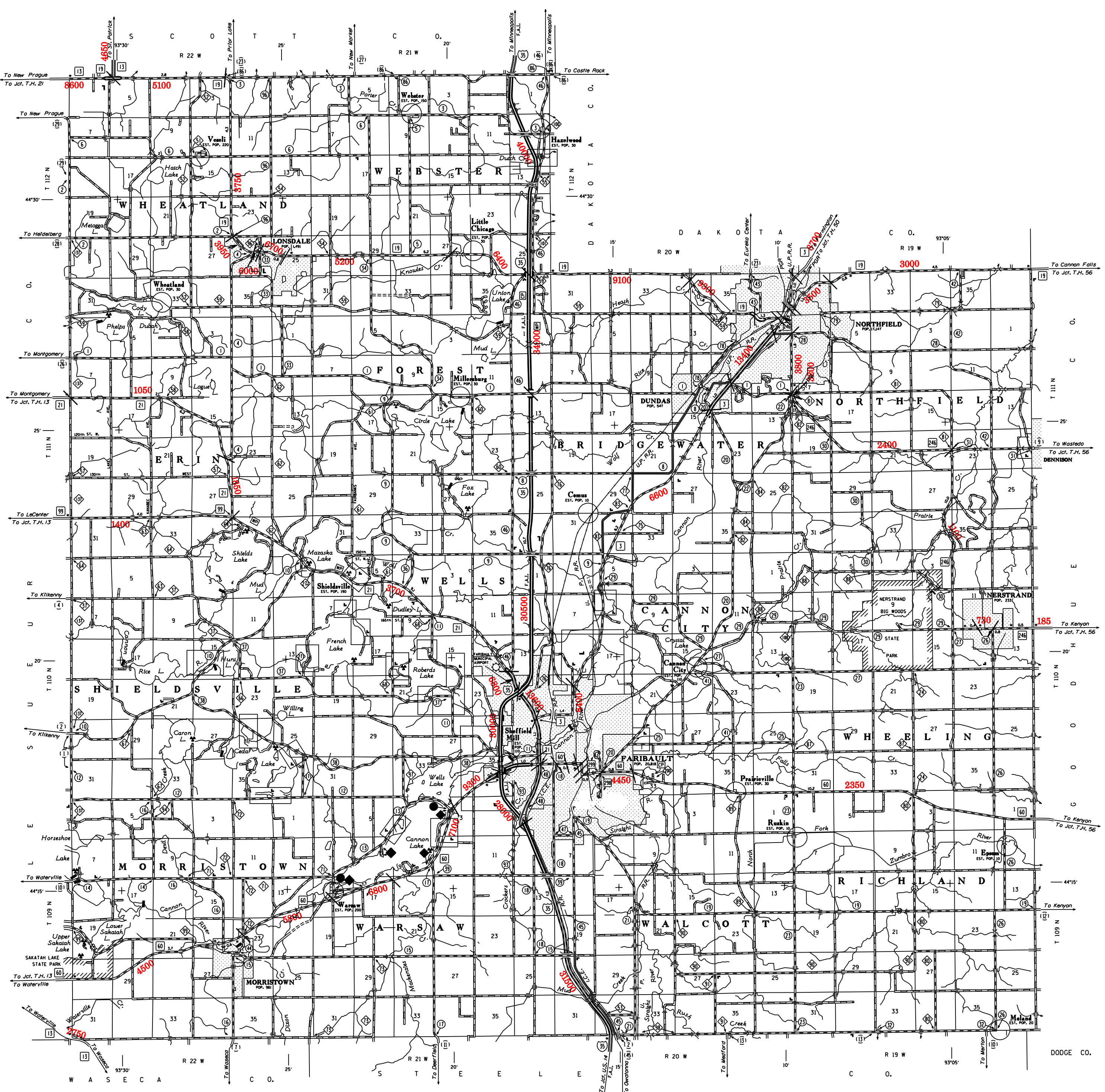
- | ROAD AND ROADWAY FEATURES  | NAVIGATION               |
|--|--------------------------|
| UNDESIGNED ROAD  | SHIP LINES ON LAKE LINES |
| PROTECTED ROAD   | DOCK, PIER OR LANDING    |
| GRAVEL AND BRUSHED ROAD  | NAVIGABLE STRAW          |
| RAILROAD TRACK   | ONE WITH LOCK            |
| STREET LIGHT   | LONGHORN LIGHT BEACON    |
| BRUSHED ROAD   |                          |
| ROAD WITH UNDESIGNED COMPACT SURFACING OF LOCAL ROADS NOT FROM OTHER SOURCES |                          |
| PROTECTED ROAD   |                          |
| RAILROAD TRACK   |                          |
| ROAD WITH OTHER SURFACING  |                          |
| ROAD WITH UNDESIGNED COMPACT SURFACING OF LOCAL ROADS NOT FROM OTHER SOURCES |                          |
| ROAD WITH UNDESIGNED COMPACT SURFACING OF LOCAL ROADS NOT FROM OTHER SOURCES |                          |
| ROAD WITH UNDESIGNED COMPACT SURFACING OF LOCAL ROADS NOT FROM OTHER SOURCES |                          |
- | ROAD SYSTEM DESIGNATIONS     | CONSERVATION                             |
|------------------------------|--|
| STATE NUMBERED TRUNK HIGHWAY | FOREST SERVICE STATION                   |
| COUNTY ROAD                  | STATE PROPERTY OCCUPIED                  |
| COUNTY STATE AID HIGHWAY     | GAME PRESERVE                            |
| STATE PARK ROAD              | STATE PROPERTY OCCUPIED                  |
| STATE PARK ROAD              | OPERATION ON LANDS UNDER FEDERAL CONTROL |
| STATE PARK ROAD              | PROHIBITED BY STATE OR COUNTY            |
| STATE PARK ROAD              | UNDESIGNED TRAFFIC SIGNAL                |
| STATE PARK ROAD              | UNDESIGNED TRAFFIC SIGNAL                |
| STATE PARK ROAD              | UNDESIGNED TRAFFIC SIGNAL                |
| STATE PARK ROAD              | UNDESIGNED TRAFFIC SIGNAL                |
- | ROAD SYSTEM DESIGNATIONS     | RECREATION               |
|------------------------------|--------------------------|
| STATE NUMBERED TRUNK HIGHWAY | GOLF COURSE OR GOLF CLUB |
| COUNTY ROAD                  | SKI RESORT               |
| COUNTY STATE AID HIGHWAY     | ATLANTIC FIELD           |
| STATE PARK ROAD              | PREPARED PARK            |
| STATE PARK ROAD              | PREPARED PARK            |
| STATE PARK ROAD              | PREPARED PARK            |
| STATE PARK ROAD              | PREPARED PARK            |
| STATE PARK ROAD              | PREPARED PARK            |
| STATE PARK ROAD              | PREPARED PARK            |
- | RAILROADS      | FARMS AND DWELLING UNITS     |
|----------------|------------------------------|
| RAILROAD TRACK | FARM UNIT                    |
| RAILROAD TRACK | ONE WITH OTHER ROAD          |
| RAILROAD TRACK | BARNS OR GARAGES FOR STUDENT |
| RAILROAD TRACK | BARNS OR GARAGES FOR STUDENT |
| RAILROAD TRACK | BARNS OR GARAGES FOR STUDENT |
| RAILROAD TRACK | BARNS OR GARAGES FOR STUDENT |
| RAILROAD TRACK | BARNS OR GARAGES FOR STUDENT |
| RAILROAD TRACK | BARNS OR GARAGES FOR STUDENT |
- | RAILROADS      | INDUSTRIAL       |
|----------------|------------------|
| RAILROAD TRACK | INDUSTRIAL PLANT |
| RAILROAD TRACK | INDUSTRIAL PLANT |
| RAILROAD TRACK | INDUSTRIAL PLANT |
| RAILROAD TRACK | INDUSTRIAL PLANT |
| RAILROAD TRACK | INDUSTRIAL PLANT |
| RAILROAD TRACK | INDUSTRIAL PLANT |
| RAILROAD TRACK | INDUSTRIAL PLANT |
| RAILROAD TRACK | INDUSTRIAL PLANT |
- | AIRWAYS | COMMERCIAL                            |
|---------|---------------------------------------|
| AIRWAY  | STORE OR SMALL BUSINESS ESTABLISHMENT |
| AIRWAY  | STORE OR SMALL BUSINESS ESTABLISHMENT |
| AIRWAY  | STORE OR SMALL BUSINESS ESTABLISHMENT |
| AIRWAY  | STORE OR SMALL BUSINESS ESTABLISHMENT |
| AIRWAY  | STORE OR SMALL BUSINESS ESTABLISHMENT |
| AIRWAY  | STORE OR SMALL BUSINESS ESTABLISHMENT |
| AIRWAY  | STORE OR SMALL BUSINESS ESTABLISHMENT |
| AIRWAY  | STORE OR SMALL BUSINESS ESTABLISHMENT |
- | STRUCTURES | PUBLIC SERVICE FACILITIES |
|------------|---------------------------|
| STRUCTURE  | POST OFFICE               |
| STRUCTURE  | POST OFFICE               |
| STRUCTURE  | POST OFFICE               |
| STRUCTURE  | POST OFFICE               |
| STRUCTURE  | POST OFFICE               |
| STRUCTURE  | POST OFFICE               |
| STRUCTURE  | POST OFFICE               |
| STRUCTURE  | POST OFFICE               |
- | CITY CENTERS | MISCELLANEOUS MAP FEATURES      |
|--------------|---------------------------------|
| CITY CENTER  | CHURCH OR RELIGIOUS INSTITUTION |
| CITY CENTER  | CHURCH OR RELIGIOUS INSTITUTION |
| CITY CENTER  | CHURCH OR RELIGIOUS INSTITUTION |
| CITY CENTER  | CHURCH OR RELIGIOUS INSTITUTION |
| CITY CENTER  | CHURCH OR RELIGIOUS INSTITUTION |
| CITY CENTER  | CHURCH OR RELIGIOUS INSTITUTION |
| CITY CENTER  | CHURCH OR RELIGIOUS INSTITUTION |
| CITY CENTER  | CHURCH OR RELIGIOUS INSTITUTION |

VOLUMES PREPARED BY  
THE OFFICE OF  
TRANSPORTATION DATA & ANALYSIS

NUMERALS INDICATE AVERAGE DAILY  
TRAFFIC VOLUMES ON DESIGNATED ROADS.

TRUNK HIGHWAY ROUTES ARE 2006 A.A.T. VOLUMES.

FOR DESIGNATED ROADS :  
/ = SEGMENT ENDPOINT FOR ALL  
ROADS INTERSECTED BY HATCH  
( = SEGMENT ENDPOINT ONLY FOR  
ROAD SEPARATED FROM INTERSECTING  
ROAD BY ARC



Outline Map of Minnesota showing location of the County within the State.

Area of this County 516 Square Miles  
Land Area 501 Square Miles  
2000 Total County Population 66,666

\*NOTE: ALL FEATURES EXCEPT TOWNSHIP ROADS AND  
CULTURE ARE CURRENT AS OF JANUARY 1, 2006.  
NOTE: FOR DETAIL OF COUNTY STATE AID HIGHWAYS AND COUNTY  
ROADS IN INCORPORATED PLACES, SEE MAPS OF MUNICIPALITIES.