

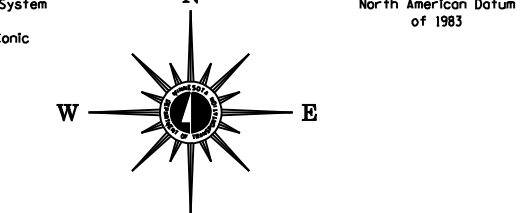
2006 TRAFFIC VOLUMES  
GENERAL HIGHWAY MAP  
**MARSHALL COUNTY**  
MINNESOTA

PREPARED BY THE  
MINNESOTA DEPARTMENT OF TRANSPORTATION  
OFFICE OF TRANSPORTATION DATA & ANALYSIS  
IN COOPERATION WITH  
U.S. DEPARTMENT OF TRANSPORTATION  
FEDERAL HIGHWAY ADMINISTRATION

2006

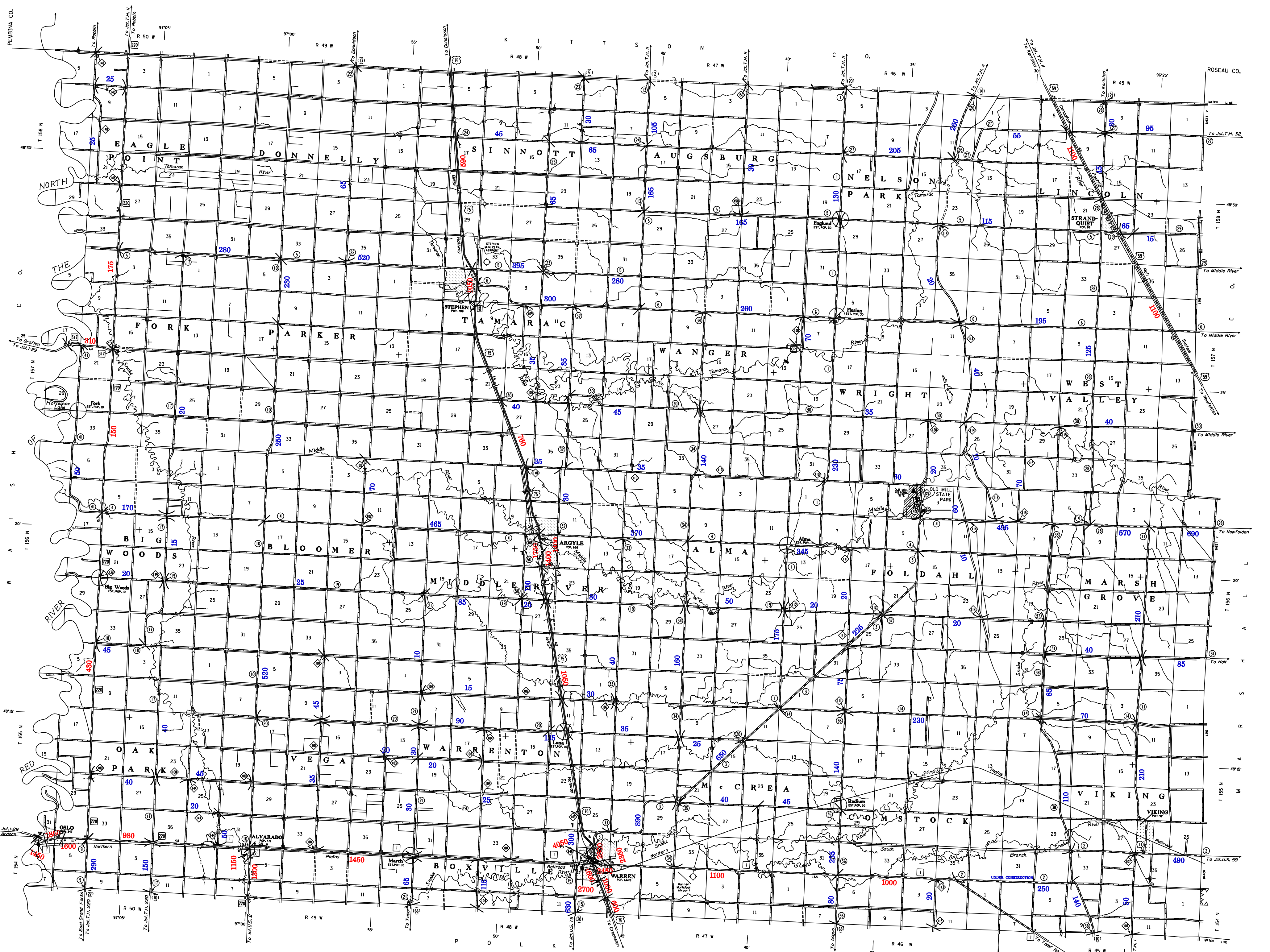
BASIC DATA - 1977\*

Projection  
Minnesota Coordinate System  
North Zone  
Lambert Conformal Conic



**LEGEND**

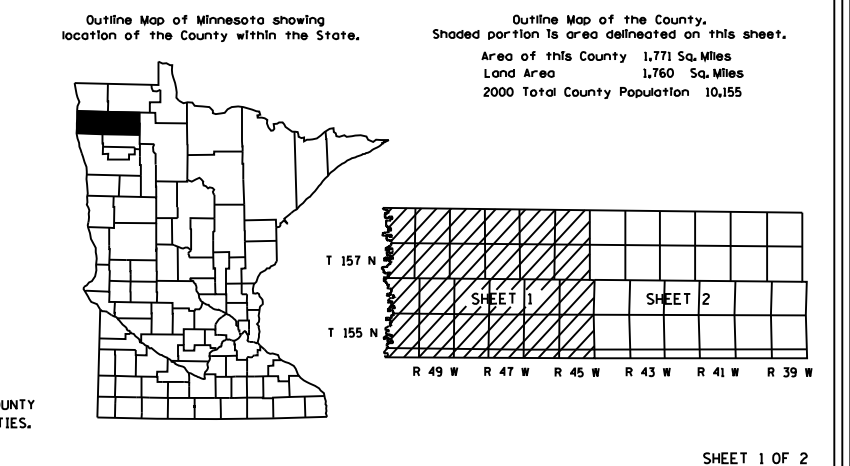
ROAD AND ROADWAY FEATURES	NAVIGATION
IMPROVED ROAD	WIDE RIVER OR NATURAL STREAM
UNIMPROVED ROAD	NARROW RIVER OR NATURAL STREAM
GRAVEL AND GRAVEL ROAD	BOULEVARD OR LINING
SOFT SURFACE ROAD	NAVIGABLE STREAM
BIWAY ROAD	RAVINE
DIVIDER ROAD	RAVINE WITH LEAK
ROAD OR UNIMPROVED CONCEPT	RAVINE WITH LEAK AND
EXTENSION OF ROAD	RAVINE WITH LEAK AND
FULL WITHIN MUNICIPALITIES AND	RAVINE WITH LEAK AND
TOWNSHIP BOUNDARIES	RAVINE WITH LEAK AND
GRADE SEPARATION	RAVINE WITH LEAK AND
FULL TRAFFIC INTERCHANGE	RAVINE WITH LEAK AND
PARTIAL TRAFFIC INTERCHANGE	RAVINE WITH LEAK AND
MISCELLANEOUS ROADWAY FEATURES	RAVINE WITH LEAK AND
RAILROAD	RAVINE WITH LEAK AND
RAILROAD	RAVINE WITH LEAK AND
RAILROAD	RAVINE WITH LEAK AND
RAILROAD	RAVINE WITH LEAK AND



NUMERALS INDICATE AVERAGE DAILY  
TRAFFIC VOLUMES ON DESIGNATED ROADS.  
TRUNK HIGHWAY ROUTES ARE 2006 A.A.D.T. VOLUMES.  
COUNTY SYSTEM ROADS ARE 2006 A.A.D.T. VOLUMES.

FOR DESIGNATED ROADS :  
/ = SEGMENT ENDPOINT FOR ALL  
ROADS INTERSECTED BY HATCH  
( = SEGMENT ENDPOINT ONLY FOR  
ROAD SEPARATED FROM INTERSECTING  
ROAD BY ARC

VOLUMES PREPARED BY  
THE OFFICE OF  
TRANSPORTATION DATA & ANALYSIS



\*NOTE: ALL FEATURES EXCEPT TOWNSHIP ROADS AND  
COUNTY ARE CURRENT AS OF JANUARY 1, 2006.  
NOTE: FOR DETAILS OF COUNTY STATE AND HIGHWAYS AND COUNTY  
ROADS IN INCORPORATED PLACES, SEE MAPS OF MUNICIPALITIES.