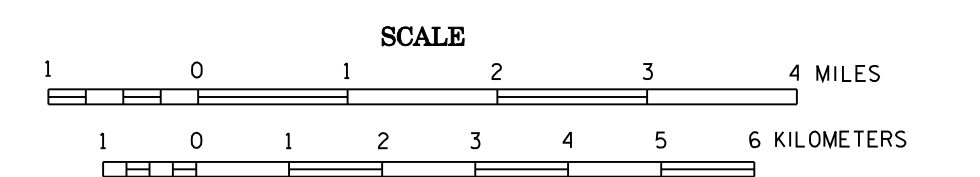


MANITOBA

L A K E O F T H E W O O D S C O.

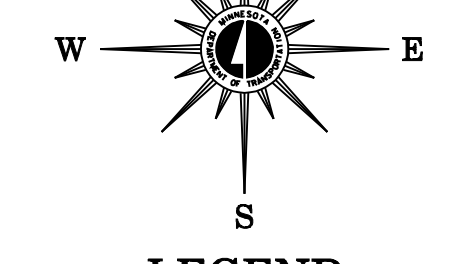
2006 TRAFFIC VOLUMES
GENERAL HIGHWAY MAP
LAKE OF THE
WOODS CO.
MINNESOTA

PREPARED BY THE
MINNESOTA DEPARTMENT OF TRANSPORTATION
OFFICE OF TRANSPORTATION DATA & ANALYSIS
IN COOPERATION WITH
U.S. DEPARTMENT OF TRANSPORTATION
FEDERAL HIGHWAY ADMINISTRATION

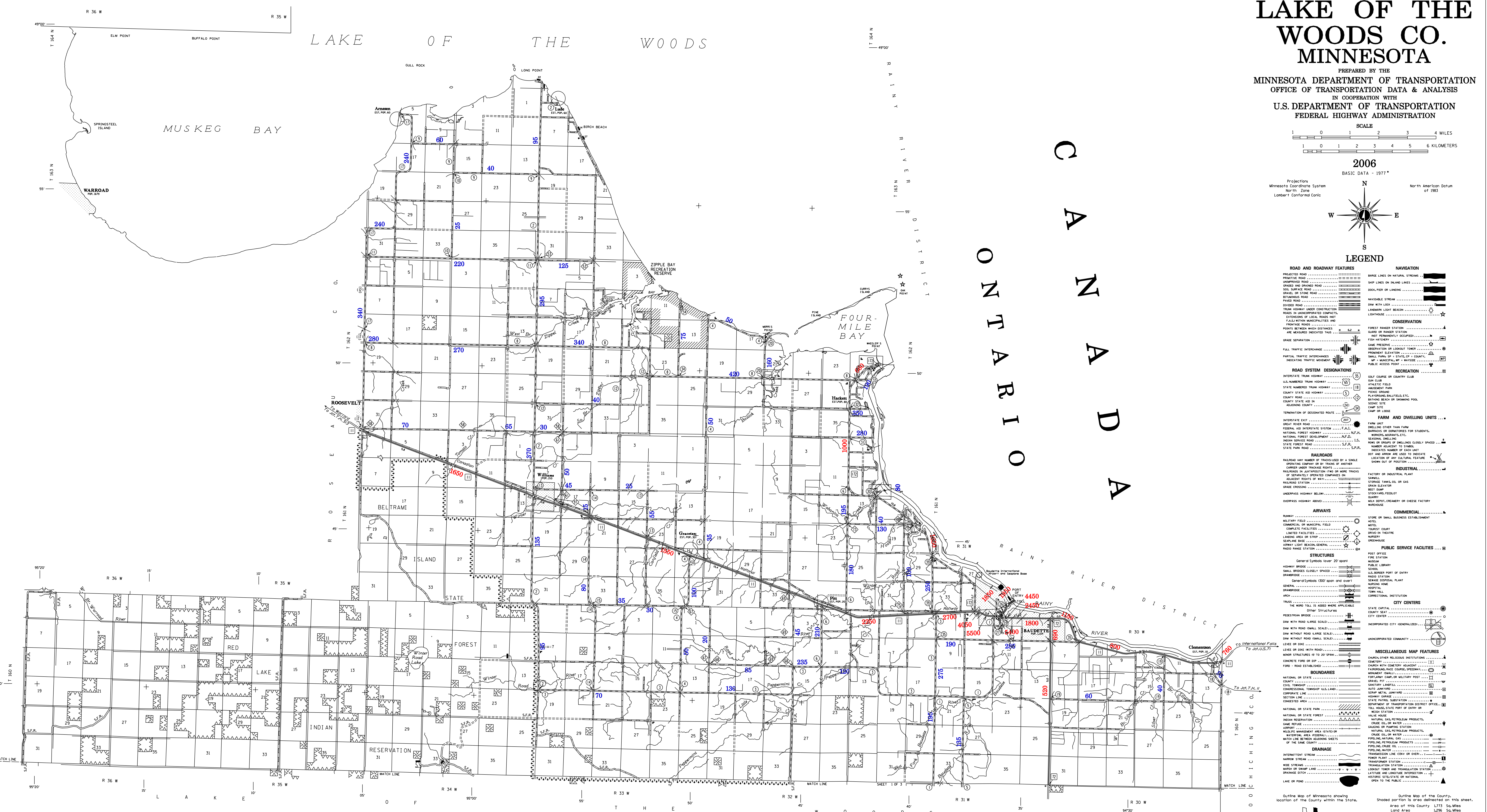


2006

Projection: Minnesota Coordinate System
North: True
Datum: Lambert Conformal Conic



LEGEND table listing symbols for ROAD AND ROADWAY FEATURES, NAVIGATION, CONSERVATION, RECREATION, FARM AND DWELLING UNITS, AIRWAYS, COMMERCIAL, and MISCELLANEOUS MAP FEATURES.



NUMERALS INDICATE AVERAGE DAILY TRAFFIC VOLUMES ON DESIGNATED ROADS.

FOR DESIGNATED ROADS:
/ = SEGMENT ENDPOINT FOR ALL ROADS INTERSECTED BY HATCH
(= SEGMENT ENDPOINT ONLY FOR ROAD SEPARATED FROM INTERSECTING ROAD BY ARC

VOLUMES PREPARED BY THE OFFICE OF TRANSPORTATION DATA & ANALYSIS

*NOTE: ALL FEATURES EXCEPT TOWNSHIP ROADS AND CULTURE ARE CURRENT AS OF JANUARY 1, 2006.
NOTE: FOR DETAIL OF COUNTY STATE AID HIGHWAYS AND COUNTY ROADS IN INCORPORATED PLACES, SEE MAPS OF MUNICIPALITIES.

