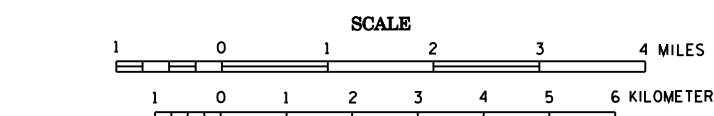


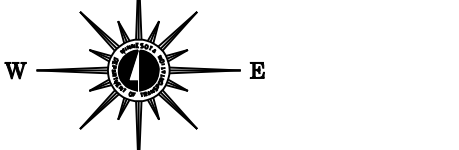
2006 TRUNK HIGHWAY VOLUMES  
GENERAL HIGHWAY MAP  
**KOOCHICHING  
COUNTY**  
MINNESOTA

PREPARED BY THE  
MINNESOTA DEPARTMENT OF TRANSPORTATION  
OFFICE OF TRANSPORTATION DATA & ANALYSIS  
IN COOPERATION WITH  
U.S. DEPARTMENT OF TRANSPORTATION  
FEDERAL HIGHWAY ADMINISTRATION



2006  
BASIC DATA - 1977

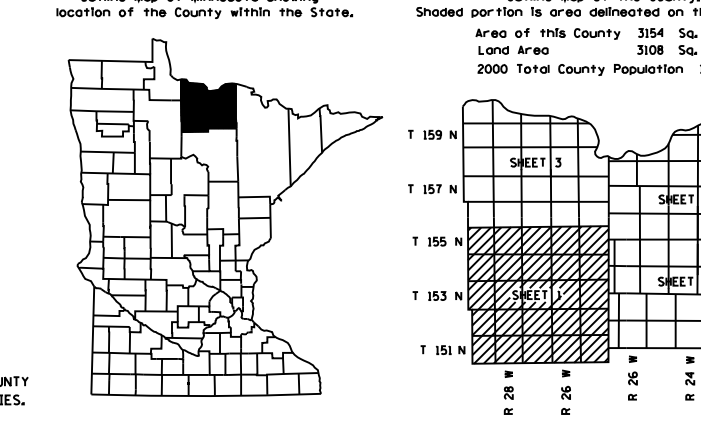
Projections  
Minnesota Coordinate System  
North Zone  
Lambert Conformal Conic



**LEGEND**

- ROAD AND ROADWAY FEATURES**
  - PROTECTED ROAD
  - UNIMPROVED ROAD
  - GRAVEL AND GRAVEL ROAD
  - GRAVEL ROAD
  - STRIPED ROAD
  - STRIPED ROAD WITH SHOULDER
  - ROAD UNDER CONSTRUCTION
  - ROAD WITH UNCOMPLETED EXTENSION OF LOCAL ROAD
  - ROAD WITH UNCOMPLETED EXTENSION OF STATE ROAD
  - ROAD WITH UNCOMPLETED EXTENSION OF COUNTY ROAD
  - ROAD WITH UNCOMPLETED EXTENSION OF TOWNSHIP ROAD
  - ROAD WITH UNCOMPLETED EXTENSION OF LOCAL ROAD
  - ROAD WITH UNCOMPLETED EXTENSION OF STATE ROAD
  - ROAD WITH UNCOMPLETED EXTENSION OF COUNTY ROAD
  - ROAD WITH UNCOMPLETED EXTENSION OF TOWNSHIP ROAD
- NAVIGATION**
  - RAIL LINE ON MAIN STREETS
  - RAIL LINE ON BRANCH LINES
  - RAIL LINE ON BRANCH LINES
  - RAIL LINE ON BRANCH LINES
  - RAIL LINE ON BRANCH LINES
  - RAIL LINE ON BRANCH LINES
  - RAIL LINE ON BRANCH LINES
  - RAIL LINE ON BRANCH LINES
  - RAIL LINE ON BRANCH LINES
  - RAIL LINE ON BRANCH LINES
  - RAIL LINE ON BRANCH LINES
- CONSERVATION**
  - STATE NUMBERED TRAIL
  - STATE NUMBERED TRAIL
  - STATE NUMBERED TRAIL
  - STATE NUMBERED TRAIL
  - STATE NUMBERED TRAIL
  - STATE NUMBERED TRAIL
  - STATE NUMBERED TRAIL
  - STATE NUMBERED TRAIL
  - STATE NUMBERED TRAIL
  - STATE NUMBERED TRAIL
  - STATE NUMBERED TRAIL
- RECREATION**
  - GOLF COURSE OR COUNTRY CLUB
  - GOLF COURSE OR COUNTRY CLUB
  - GOLF COURSE OR COUNTRY CLUB
  - GOLF COURSE OR COUNTRY CLUB
  - GOLF COURSE OR COUNTRY CLUB
  - GOLF COURSE OR COUNTRY CLUB
  - GOLF COURSE OR COUNTRY CLUB
  - GOLF COURSE OR COUNTRY CLUB
  - GOLF COURSE OR COUNTRY CLUB
  - GOLF COURSE OR COUNTRY CLUB
- FARM AND DWELLING UNITS**
  - FARM UNIT
  - FARM UNIT
  - FARM UNIT
  - FARM UNIT
  - FARM UNIT
  - FARM UNIT
  - FARM UNIT
  - FARM UNIT
  - FARM UNIT
  - FARM UNIT
- INDUSTRIAL**
  - INDUSTRIAL
  - INDUSTRIAL
  - INDUSTRIAL
  - INDUSTRIAL
  - INDUSTRIAL
  - INDUSTRIAL
  - INDUSTRIAL
  - INDUSTRIAL
  - INDUSTRIAL
  - INDUSTRIAL
- ARWAYS**
  - ARWAYS
  - ARWAYS
  - ARWAYS
  - ARWAYS
  - ARWAYS
  - ARWAYS
  - ARWAYS
  - ARWAYS
  - ARWAYS
  - ARWAYS
- STRUCTURES**
  - STRUCTURES
  - STRUCTURES
  - STRUCTURES
  - STRUCTURES
  - STRUCTURES
  - STRUCTURES
  - STRUCTURES
  - STRUCTURES
  - STRUCTURES
  - STRUCTURES
- BOUNDARIES**
  - BOUNDARIES
  - BOUNDARIES
  - BOUNDARIES
  - BOUNDARIES
  - BOUNDARIES
  - BOUNDARIES
  - BOUNDARIES
  - BOUNDARIES
  - BOUNDARIES
  - BOUNDARIES
- DRAINAGE**
  - DRAINAGE
  - DRAINAGE
  - DRAINAGE
  - DRAINAGE
  - DRAINAGE
  - DRAINAGE
  - DRAINAGE
  - DRAINAGE
  - DRAINAGE
  - DRAINAGE
- MISCELLANEOUS MAP FEATURES**
  - MISCELLANEOUS MAP FEATURES
  - MISCELLANEOUS MAP FEATURES
  - MISCELLANEOUS MAP FEATURES
  - MISCELLANEOUS MAP FEATURES
  - MISCELLANEOUS MAP FEATURES
  - MISCELLANEOUS MAP FEATURES
  - MISCELLANEOUS MAP FEATURES
  - MISCELLANEOUS MAP FEATURES
  - MISCELLANEOUS MAP FEATURES
  - MISCELLANEOUS MAP FEATURES

VOLUMES PREPARED BY  
THE OFFICE OF  
TRANSPORTATION DATA & ANALYSIS  
NUMERALS INDICATE AVERAGE DAILY  
TRAFFIC VOLUMES ON DESIGNATED ROADS.  
NO TRUNK HIGHWAY COUNTS TAKEN IN 2006  
TRUNK HIGHWAY ROUTES ARE 2004 A.A.D.T. VOLUMES  
FOR DESIGNATED ROADS:  
/ = SEGMENT ENDPOINT FOR ALL  
ROADS INTERSECTED BY HATCH  
( ) = SEGMENT ENDPOINT ONLY FOR  
ROAD SEPARATED FROM INTERSECTING  
ROAD BY ARC



NOTE: ALL FEATURES EXCEPT TOWNSHIP ROADS AND  
COUNTY STATE HIGHWAYS ARE CURRENT AS OF JANUARY 1, 2006.  
NOTE: FOR DETAILS OF COUNTY STATE AND HIGHWAYS AND COUNTY  
ROADS IN INCORPORATED PLACES, SEE MAPS OF MUNICIPALITIES.

