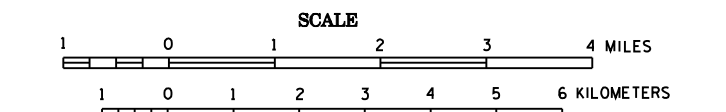


2006 TRUNK HIGHWAY VOLUMES
GENERAL HIGHWAY MAP
COOK
COUNTY
MINNESOTA

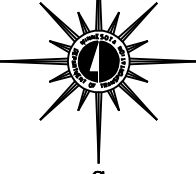
PREPARED BY THE
 MINNESOTA DEPARTMENT OF TRANSPORTATION
 OFFICE OF TRANSPORTATION DATA & ANALYSIS
 IN COOPERATION WITH
 U.S. DEPARTMENT OF TRANSPORTATION
 FEDERAL HIGHWAY ADMINISTRATION



2006

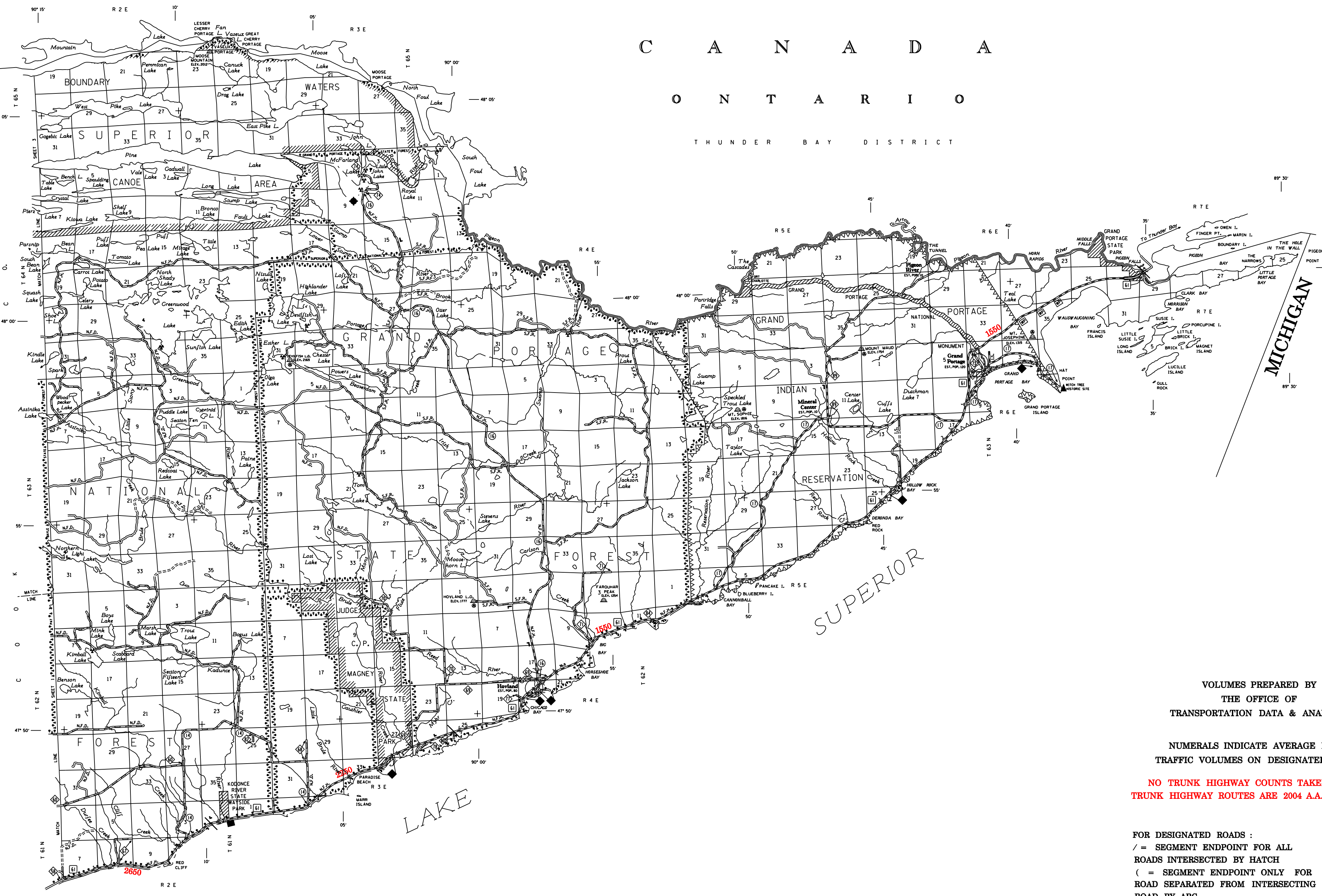
BASIC DATA - 1976*

Projections
 Minnesota Coordinate System
 North Zone
 Lambert Conformal Conic



LEGEND

ROAD AND ROADWAY FEATURES	NAVIGATION	CONSERVATION	RECREATION	FARM AND DWELLING UNITS	INDUSTRIAL	CITY CENTERS	MISCELLANEOUS MAP FEATURES
PROTECTED ROAD	SHIP LINES ON NATURAL STREAMS	STATE OF MINNESOTA	GOLF COURSE OR COUNTRY CLUB	FARM UNIT	INDUSTRIAL	CITY CENTER	COUNCIL OF RELIGIOUS INSTITUTIONS
PRIORITIZED ROAD	SHIP LINES ON BUILT LINES	STATE OF MINNESOTA	INDUSTRIAL FIELD	FARM UNIT	INDUSTRIAL	CITY CENTER	CHURCH
GRAVEL AND GRAVEL ROAD	SHOULDER OR LAINE	STATE OF MINNESOTA	INDUSTRIAL FIELD	FARM UNIT	INDUSTRIAL	CITY CENTER	CHURCH
DIRT ROAD	DRY RIVER OR STREAM	STATE OF MINNESOTA	INDUSTRIAL FIELD	FARM UNIT	INDUSTRIAL	CITY CENTER	CHURCH
BRIDGE	SHOULDER OR LAINE	STATE OF MINNESOTA	INDUSTRIAL FIELD	FARM UNIT	INDUSTRIAL	CITY CENTER	CHURCH
DRIVER ROAD	DRY RIVER OR STREAM	STATE OF MINNESOTA	INDUSTRIAL FIELD	FARM UNIT	INDUSTRIAL	CITY CENTER	CHURCH
ROAD UNDER CONSTRUCTION	DRY RIVER OR STREAM	STATE OF MINNESOTA	INDUSTRIAL FIELD	FARM UNIT	INDUSTRIAL	CITY CENTER	CHURCH
ROAD UNDER CONSTRUCTION	DRY RIVER OR STREAM	STATE OF MINNESOTA	INDUSTRIAL FIELD	FARM UNIT	INDUSTRIAL	CITY CENTER	CHURCH
ROAD UNDER CONSTRUCTION	DRY RIVER OR STREAM	STATE OF MINNESOTA	INDUSTRIAL FIELD	FARM UNIT	INDUSTRIAL	CITY CENTER	CHURCH
ROAD UNDER CONSTRUCTION	DRY RIVER OR STREAM	STATE OF MINNESOTA	INDUSTRIAL FIELD	FARM UNIT	INDUSTRIAL	CITY CENTER	CHURCH

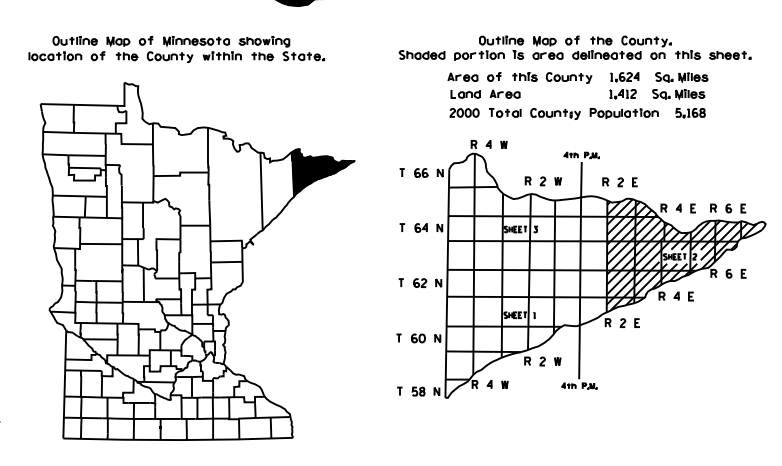


VOLUMES PREPARED BY
 THE OFFICE OF
 TRANSPORTATION DATA & ANALYSIS

NUMERALS INDICATE AVERAGE DAILY
 TRAFFIC VOLUMES ON DESIGNATED ROADS.

NO TRUNK HIGHWAY COUNTS TAKEN IN 2006
 TRUNK HIGHWAY ROUTES ARE 2004 A.A.D.T. VOLUMES.

FOR DESIGNATED ROADS :
 // = SEGMENT ENDPOINT FOR ALL
 ROADS INTERSECTED BY HATCH
 (= SEGMENT ENDPOINT ONLY FOR
 ROAD SEPARATED FROM INTERSECTING
 ROAD BY ARC



*NOTE: ALL FEATURES EXCEPT TOWNSHIP ROADS AND
 CULTURE ARE CURRENT AS OF JANUARY 1, 2006.
 NOTE: FOR DETAILS OF COUNTY STATE AID HIGHWAYS AND COUNTY
 ROADS IN INCORPORATED PLACES, SEE MAPS OF MUNICIPALITIES.