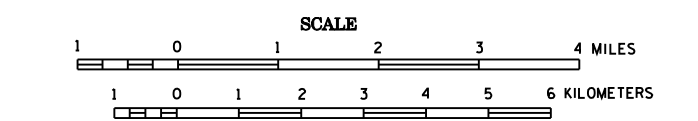


2006 TRUNK HIGHWAY VOLUMES  
GENERAL HIGHWAY MAP  
CLEARWATER  
COUNTY  
MINNESOTA

PREPARED BY THE  
MINNESOTA DEPARTMENT OF TRANSPORTATION  
OFFICE OF TRANSPORTATION DATA & ANALYSIS  
IN COOPERATION WITH  
U.S. DEPARTMENT OF TRANSPORTATION  
FEDERAL HIGHWAY ADMINISTRATION



2006  
BASIC DATA - 1977\*

Projection  
Minnesota Coordinate System  
North Zone  
Lambert Conformal Conic  
North American Datum  
of 1983



LEGEND

**ROAD AND ROADWAY FEATURES**

- PROPOSED ROAD
- UNPAVED ROAD
- GRAVEL AND DIRT ROAD
- ROAD WITH DRAINAGE
- ROAD WITH SIDEWALK
- ROAD WITH SHOULDER
- ROAD WITH SHOULDER AND DRAINAGE
- ROAD WITH SHOULDER AND SIDEWALK
- ROAD WITH SHOULDER AND SIDEWALK AND DRAINAGE
- ROAD WITH SHOULDER AND SIDEWALK AND DRAINAGE AND CURB
- ROAD WITH SHOULDER AND SIDEWALK AND DRAINAGE AND CURB AND LIGHTS
- ROAD WITH SHOULDER AND SIDEWALK AND DRAINAGE AND CURB AND LIGHTS AND SIGNAGE

**NAVIGATION**

- BRIDGE LINE ON NATURAL STREAM
- SHIP LINES ON NATURAL STREAM
- BOAT-FOOT BRIDGE
- RAILROAD CROSSING
- RAILROAD CROSSING WITH GATE
- RAILROAD CROSSING WITH GATE AND SIGNAL
- RAILROAD CROSSING WITH GATE AND SIGNAL AND LIGHTS
- RAILROAD CROSSING WITH GATE AND SIGNAL AND LIGHTS AND SIGNAGE
- RAILROAD CROSSING WITH GATE AND SIGNAL AND LIGHTS AND SIGNAGE AND FENCE

**CONSERVATION**

- FOREST RESERVE
- STATE FOREST
- NATIONAL FOREST
- NATIONAL MONUMENT
- NATIONAL MONUMENT AND NATIONAL FOREST
- NATIONAL MONUMENT AND NATIONAL FOREST AND NATIONAL RESERVE
- NATIONAL MONUMENT AND NATIONAL FOREST AND NATIONAL RESERVE AND NATIONAL WILDLIFE REFUGE

**RECREATION**

- BOAT CLUB
- PUBLIC BOAT RAMP
- PUBLIC SWIMMING BEACH
- PUBLIC SWIMMING BEACH AND RESTROOM
- PUBLIC SWIMMING BEACH AND RESTROOM AND SHOWER
- PUBLIC SWIMMING BEACH AND RESTROOM AND SHOWER AND LIFEBOAT

**INDUSTRIAL**

- INDUSTRIAL PLANT
- INDUSTRIAL PLANT AND STORAGE
- INDUSTRIAL PLANT AND STORAGE AND OFFICE
- INDUSTRIAL PLANT AND STORAGE AND OFFICE AND TRAILER
- INDUSTRIAL PLANT AND STORAGE AND OFFICE AND TRAILER AND SIGNAGE

**COMMERCIAL**

- STORE OR SMALL BUSINESS ESTABLISHMENT
- RESTAURANT
- RESTAURANT AND BAR
- RESTAURANT AND BAR AND OFFICE
- RESTAURANT AND BAR AND OFFICE AND SIGNAGE

**PUBLIC SERVICE FACILITIES**

- POST OFFICE
- POST OFFICE AND MAIL BOX
- POST OFFICE AND MAIL BOX AND SIGNAGE
- POST OFFICE AND MAIL BOX AND SIGNAGE AND LIGHTS

**CITY CENTERS**

- CITY CENTER
- CITY CENTER AND SIGNAGE
- CITY CENTER AND SIGNAGE AND LIGHTS
- CITY CENTER AND SIGNAGE AND LIGHTS AND TRAILER

**MISCELLANEOUS MAP FEATURES**

- COUNCIL BLUFFS
- COUNCIL BLUFFS AND SIGNAGE
- COUNCIL BLUFFS AND SIGNAGE AND LIGHTS
- COUNCIL BLUFFS AND SIGNAGE AND LIGHTS AND TRAILER

**DRAINAGE**

- INTERMITTENT STREAM
- PERMANENT STREAM
- PERMANENT STREAM WITH SAND AND GRAVEL
- PERMANENT STREAM WITH SAND AND GRAVEL AND SAND AND GRAVEL BANK
- PERMANENT STREAM WITH SAND AND GRAVEL AND SAND AND GRAVEL BANK AND SAND AND GRAVEL POINT

**BOUNDARIES**

- NATIONAL OR STATE BORDER
- COUNTY OR TOWNSHIP BOUNDARY
- COUNTY OR TOWNSHIP BOUNDARY AND SIGNAGE
- COUNTY OR TOWNSHIP BOUNDARY AND SIGNAGE AND LIGHTS

**STRUCTURES**

- GENERALLY SYMMETRICAL 22' HIGH
- GENERALLY SYMMETRICAL 22' HIGH AND SIGNAGE
- GENERALLY SYMMETRICAL 22' HIGH AND SIGNAGE AND LIGHTS
- GENERALLY SYMMETRICAL 22' HIGH AND SIGNAGE AND LIGHTS AND TRAILER

**ROADS**

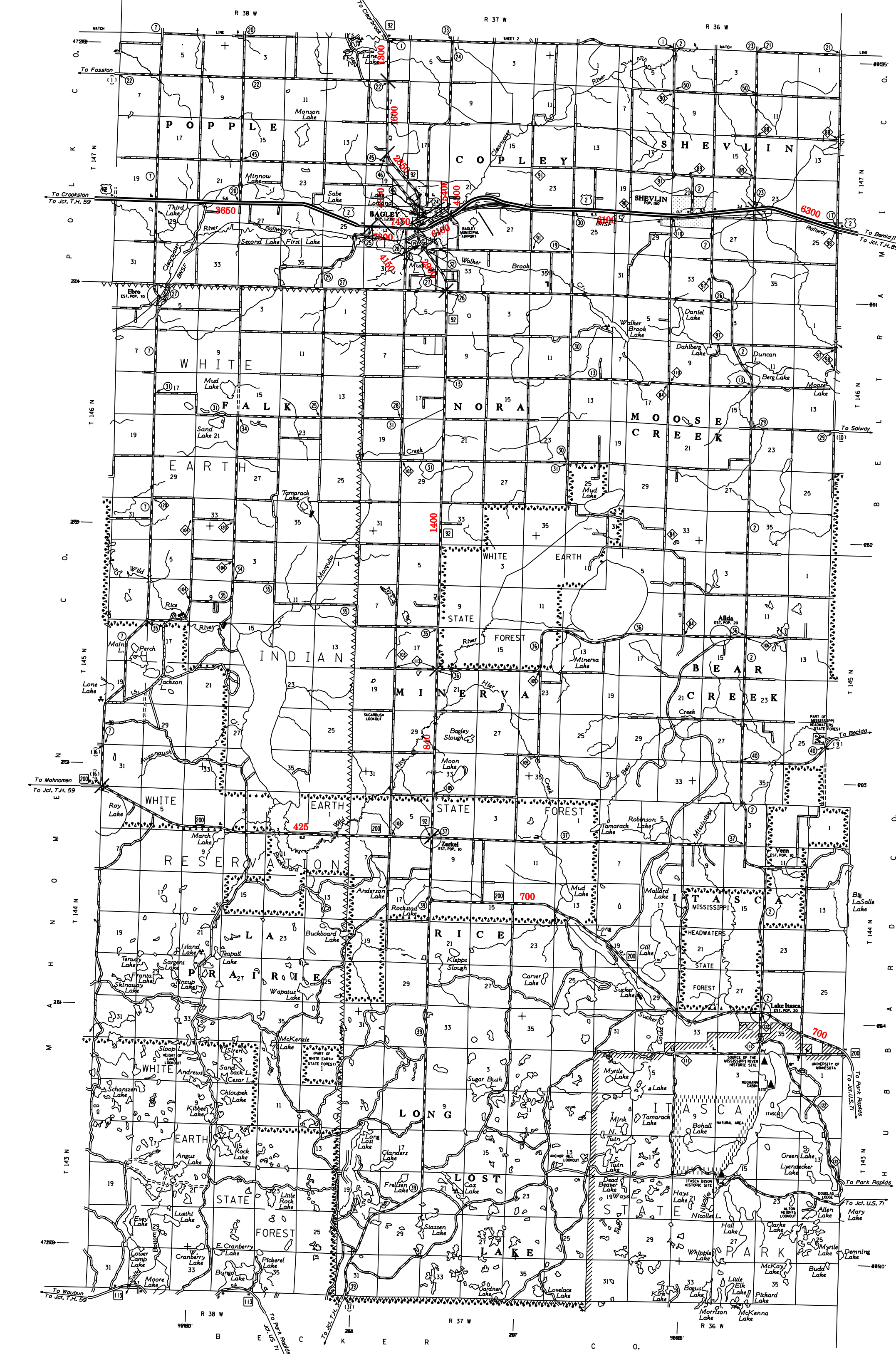
- ROAD WITH ROAD NUMBER
- ROAD WITH ROAD NUMBER AND SIGNAGE
- ROAD WITH ROAD NUMBER AND SIGNAGE AND LIGHTS
- ROAD WITH ROAD NUMBER AND SIGNAGE AND LIGHTS AND TRAILER

**UTILITIES**

- ELECTRICITY
- ELECTRICITY AND SIGNAGE
- ELECTRICITY AND SIGNAGE AND LIGHTS
- ELECTRICITY AND SIGNAGE AND LIGHTS AND TRAILER

**OTHER FEATURES**

- WATER TOWER
- WATER TOWER AND SIGNAGE
- WATER TOWER AND SIGNAGE AND LIGHTS
- WATER TOWER AND SIGNAGE AND LIGHTS AND TRAILER



VOLUMES PREPARED BY  
THE OFFICE OF  
TRANSPORTATION DATA & ANALYSIS

NUMERALS INDICATE AVERAGE DAILY  
TRAFFIC VOLUMES ON DESIGNATED ROADS.

TRUNK HIGHWAY ROUTES ARE 2006 A.D.T. VOLUMES.

FOR DESIGNATED ROADS:  
/ = SEGMENT ENDPOINT FOR ALL  
ROADS INTERSECTED BY HATCH  
( = SEGMENT ENDPOINT ONLY FOR  
ROAD SEPARATED FROM INTERSECTING  
ROAD BY ARC

\*NOTE: ALL FEATURES EXCEPT TOWNSHIP ROADS AND  
CITY LIMITS ARE CURRENT AS OF JANUARY 1, 2006.  
NOTE: FOR DETAIL OF COUNTY STATE AID HIGHWAYS AND COUNTY  
ROADS IN INCORPORATED PLACES, SEE MAPS OF MUNICIPALITIES.

