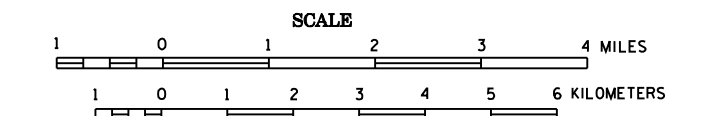


2006 TRAFFIC VOLUMES  
GENERAL HIGHWAY MAP  
**CARLTON COUNTY**  
MINNESOTA

PREPARED BY THE  
MINNESOTA DEPARTMENT OF TRANSPORTATION  
OFFICE OF TRANSPORTATION DATA & ANALYSIS  
IN COOPERATION WITH  
U.S. DEPARTMENT OF TRANSPORTATION  
FEDERAL HIGHWAY ADMINISTRATION



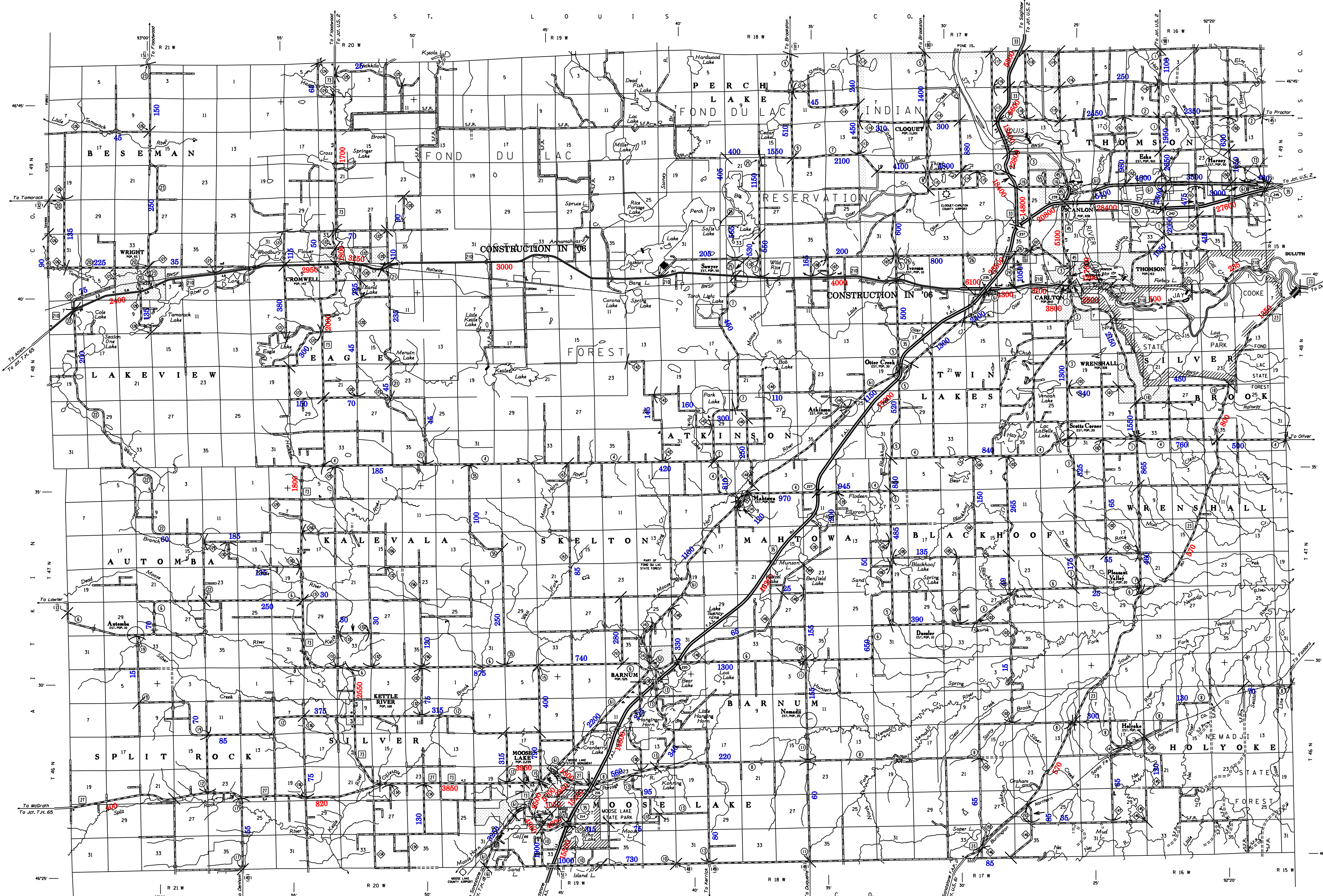
2006

BASIC DATA - 1977  
Projection: Minnesota Coordinate System  
Central Zone  
Lambert Conformal Conic



LEGEND

ROAD AND ROADWAY FEATURES	NAVIGATION
PROPOSED ROAD	RAIL LINES ON TRAILING SYSTEMS
PARTIAL ROAD	RAIL LINES ON TRAILING SYSTEMS
COMPLETED ROAD	RAIL LINES ON TRAILING SYSTEMS
GRASS AND GRAVEL ROAD	RAIL LINES ON TRAILING SYSTEMS
ROAD UNDER CONSTRUCTION	RAIL LINES ON TRAILING SYSTEMS
ROAD UNDER CONSTRUCTION	RAIL LINES ON TRAILING SYSTEMS
ROAD UNDER CONSTRUCTION	RAIL LINES ON TRAILING SYSTEMS
ROAD UNDER CONSTRUCTION	RAIL LINES ON TRAILING SYSTEMS
ROAD UNDER CONSTRUCTION	RAIL LINES ON TRAILING SYSTEMS
ROAD UNDER CONSTRUCTION	RAIL LINES ON TRAILING SYSTEMS



VOLUMES PREPARED BY THE OFFICE OF TRANSPORTATION DATA & ANALYSIS

NUMERALS INDICATE AVERAGE DAILY TRAFFIC VOLUMES ON DESIGNATED ROADS.

FOR DESIGNATED ROADS :  
/ = SEGMENT ENDPOINT FOR ALL ROADS INTERSECTED BY HATCH  
( = SEGMENT ENDPOINT ONLY FOR ROAD SEPARATED FROM INTERSECTING ROAD BY ARC

TRUNK HIGHWAY ROUTES ARE 2006 A.A.D.T. VOLUMES.  
COUNTY SYSTEM ROADS ARE 2006 A.A.D.T. VOLUMES.

\*NOTES ALL FEATURES EXCEPT TOWNSHIP ROADS AND CULTURE ARE CURRENT AS OF JANUARY 1, 2006.  
NOTES FOR DETAIL OF COUNTY STATE AID HIGHWAYS AND COUNTY ROADS IN INCORPORATED PLACES, SEE MAPS OF MUNICIPALITIES.

