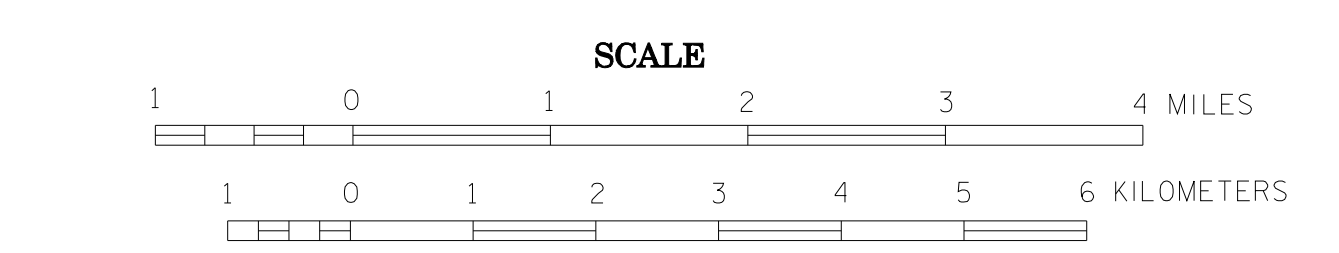


# 2004 TRUNK HIGHWAY VOLUMES GENERAL HIGHWAY MAP WASECA COUNTY MINNESOTA

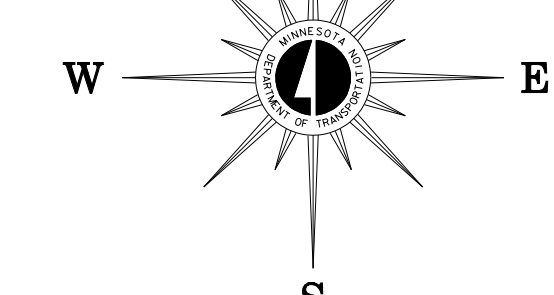
PREPARED BY THE  
**MINNESOTA DEPARTMENT OF TRANSPORTATION**  
OFFICE OF TRANSPORTATION DATA & ANALYSIS  
IN COOPERATION WITH  
**U.S. DEPARTMENT OF TRANSPORTATION**  
FEDERAL HIGHWAY ADMINISTRATION



2004  
BASIC DATA - 1977

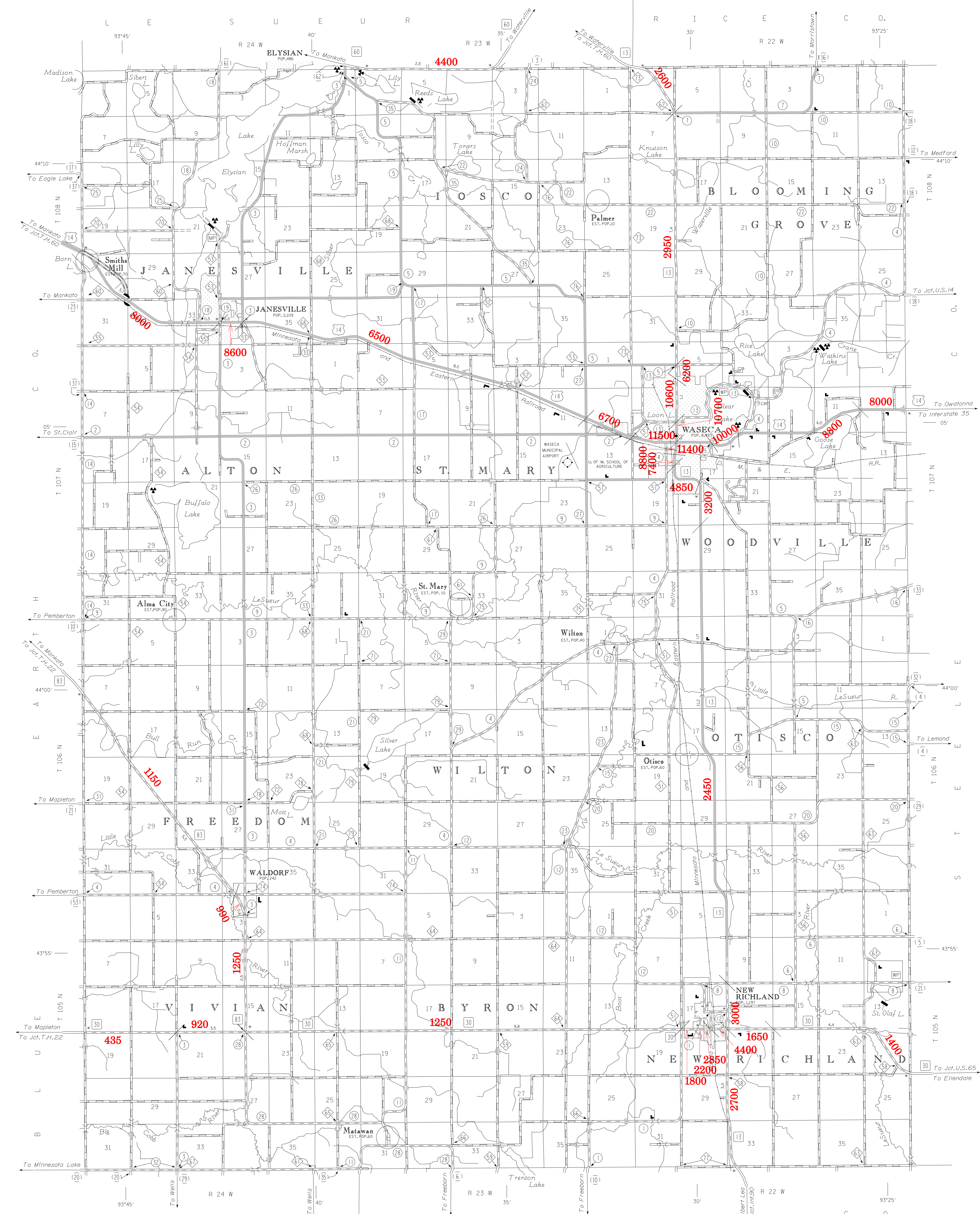
Projections  
Minnesota Coordinate System  
Lambert Conformal Conic

North American Datum  
of 1983



### LEGEND

<p><b>ROAD AND ROADWAY FEATURES</b></p> <p>UNPAVED ROAD PAVED ROAD PAVED ROAD WITH SHOULDER PAVED ROAD WITH SHOULDER AND SIDEWALK PAVED ROAD WITH SHOULDER AND SIDEWALK AND TRAIL PAVED ROAD WITH SHOULDER, SIDEWALK, AND TRAIL PAVED ROAD WITH SHOULDER, SIDEWALK, AND TRAIL AND BIKEWAY PAVED ROAD WITH SHOULDER, SIDEWALK, AND TRAIL AND BIKEWAY AND BIKEWAY</p> <p><b>ROAD SYSTEM DESIGNATIONS</b></p> <p>STATE HIGHWAY STATE TRAIL</p> <p><b>RAILROADS</b></p> <p>RAILROAD</p> <p><b>AIRWAYS</b></p> <p>STATE AIRPORT COMMERCIAL AIRPORT GENERAL AVIATION AIRPORT MUNICIPAL AIRPORT WATER AERODROME</p> <p><b>STRUCTURES</b></p> <p>BRIDGE UNDERPASS OVERPASS</p> <p><b>BOUNDARIES</b></p> <p>TOWNSHIP BOUNDARY COUNTY BOUNDARY STATE BOUNDARY</p> <p><b>DRAINAGE</b></p> <p>WATER COURSE DRAINAGE DITCH DRAINAGE CANAL</p>	<p><b>NAVIGATION</b></p> <p>SHIP LINES ON LAKE LINES DOCK, PIER OR LANDING UNAVOIDABLE STREAM LAUNDRY LIGHTHOUSE</p> <p><b>CONSERVATION</b></p> <p>FOREST RANGE BOUNDARY LAND PRESERVE WATERFOWL HANGAR NATIONAL MONUMENT NATIONAL MONUMENT WITH FEDERAL MONUMENT NATIONAL MONUMENT WITH FEDERAL MONUMENT AND NATIONAL MONUMENT</p> <p><b>RECREATION</b></p> <p>GOOLF COURSE OR COURSE CLUB STATE PARK STATE TRAIL STATE TRAIL WITH BIKEWAY STATE TRAIL WITH BIKEWAY AND BIKEWAY STATE TRAIL WITH BIKEWAY AND BIKEWAY AND BIKEWAY</p> <p><b>FARM AND DWELLING UNITS</b></p> <p>FARM UNIT INDUSTRIAL PLANT</p> <p><b>COMMERCIAL</b></p> <p>STORE OR SMALL BUSINESS ESTABLISHMENT HOTEL RESTAURANT BUSINESS OFFICE DESKTOP PUBLIC SERVICE FACILITIES</p> <p><b>CITY CENTERS</b></p> <p>CITY CENTER INCORPORATED CITY BOUNDARY UNINCORPORATED CITY BOUNDARY</p> <p><b>MISCELLANEOUS MAP FEATURES</b></p> <p>CANAL CANAL WITH DAM WATER TOWER WATER TOWER WITH DAM WATER TOWER WITH DAM AND WATER TOWER WATER TOWER WITH DAM AND WATER TOWER AND WATER TOWER WATER TOWER WITH DAM AND WATER TOWER AND WATER TOWER AND WATER TOWER</p>
--	---



**VOLUMES PREPARED BY  
THE OFFICE OF  
TRANSPORTATION DATA & ANALYSIS**

**NUMERALS INDICATE AVERAGE DAILY  
TRAFFIC VOLUMES ON DESIGNATED ROADS.**

**TRUNK HIGHWAY ROUTES ARE 2004 A.A.D.T. VOLUMES.**

**FOR DESIGNATED ROADS :**  
/ = SEGMENT ENDPOINT FOR ALL ROADS INTERSECTED BY HATCH  
( = SEGMENT ENDPOINT ONLY FOR ROAD SEPARATED FROM INTERSECTING ROAD BY ARC

\*NOTE: ALL FEATURES EXCEPT TOWNSHIP ROADS AND CULTURE ARE CURRENT AS OF JANUARY 1, 2004.  
NOTE: FOR DETAIL OF COUNTY STATE AID HIGHWAYS AND COUNTY ROADS IN INCORPORATED PLACES, SEE MAPS OF MUNICIPALITIES.

