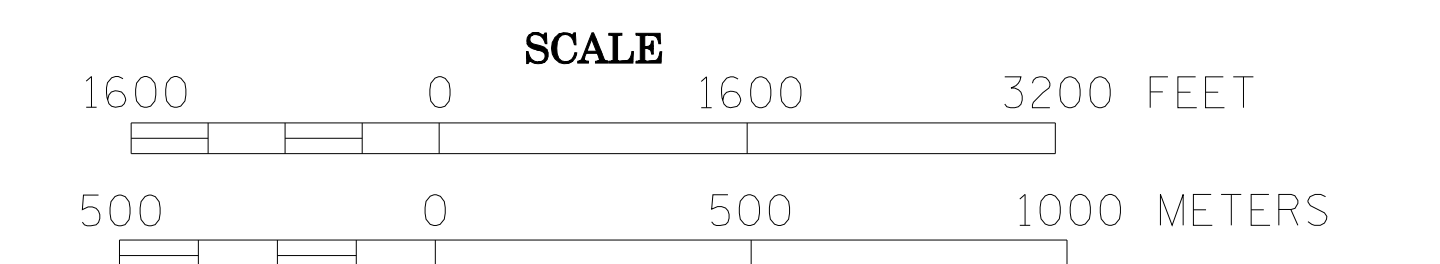


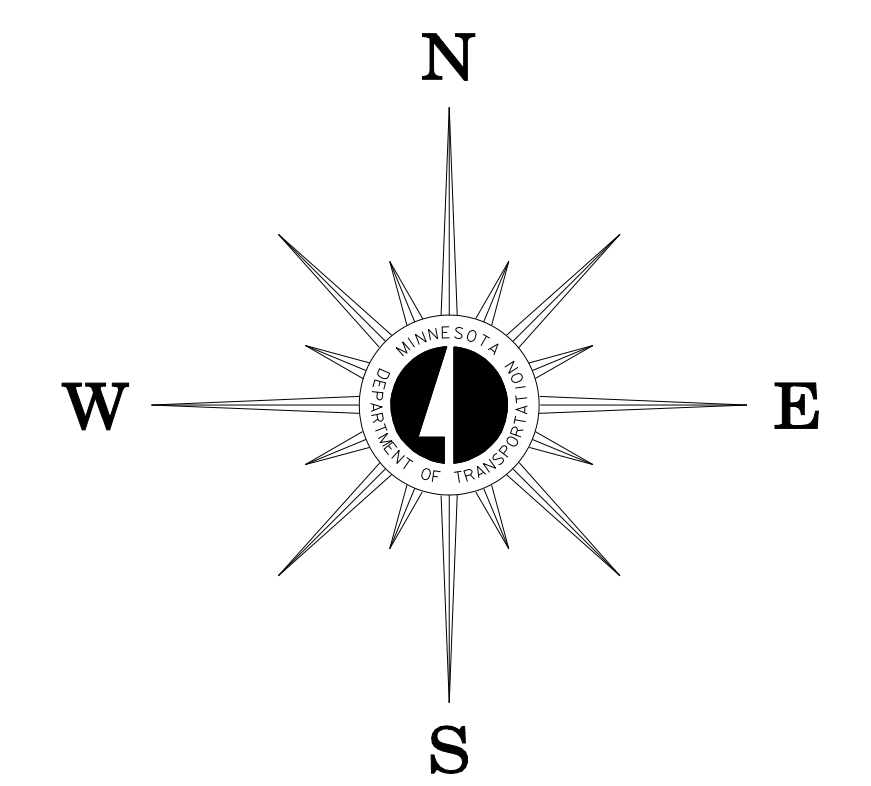
2004 TRUNK HIGHWAY VOLUMES

MUNICIPALITY OF  
**CLOQUET**

PREPARED BY THE  
MINNESOTA DEPARTMENT OF TRANSPORTATION  
OFFICE OF TRANSPORTATION DATA & ANALYSIS  
IN COOPERATION WITH  
U.S. DEPARTMENT OF TRANSPORTATION  
FEDERAL HIGHWAY ADMINISTRATION



2004  
BASIC DATA - 1993



LEGEND

- INTERSTATE TRUNK HIGHWAY..... (I-35)
- U.S. TRUNK HIGHWAY..... (210)
- STATE TRUNK HIGHWAY..... (55)
- COUNTY STATE AID HIGHWAY..... (23)
- COUNTY ROAD..... (14)
- CORPORATE LIMITS.....
- PUBLIC ROAD.....
- PRIVATE ROAD.....

MUNICIPAL STATE AID  
STREET SYSTEM

LEGEND

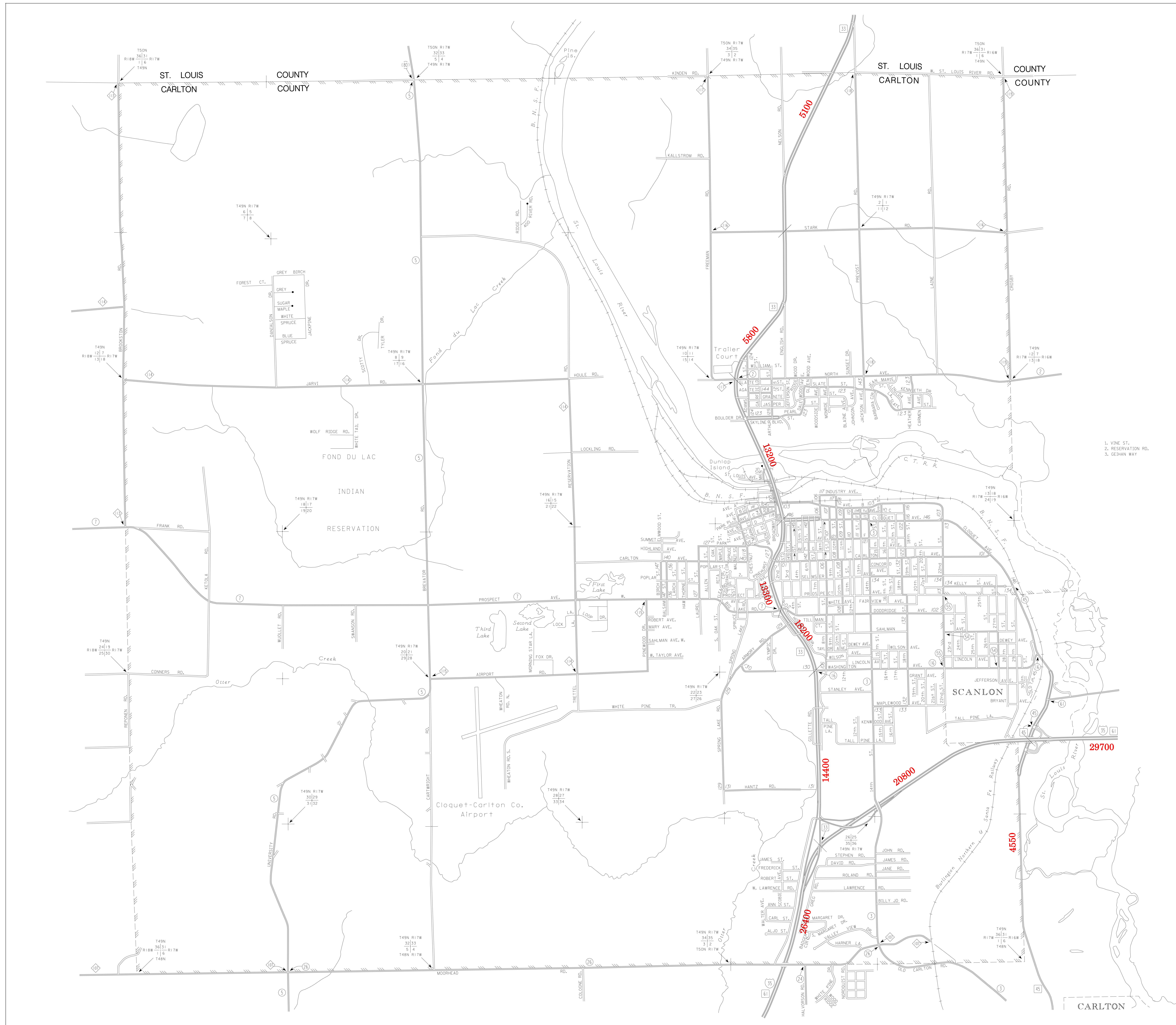
- MUNICIPAL COUNTY STATE AID STREET....
- MUNICIPAL STATE AID STREET.....
- COUNTY STATE AID HIGHWAY.....
- COUNTY ROAD.....
- TRUNK HIGHWAY.....

VOLUMES PREPARED BY  
THE OFFICE OF  
TRANSPORTATION DATA & ANALYSIS

NUMERALS INDICATE AVERAGE DAILY  
TRAFFIC VOLUMES ON DESIGNATED ROADS.

TRUNK HIGHWAY ROUTES ARE 2004 A.A.D.T. VOLUMES.

FOR DESIGNATED ROADS :  
/ = SEGMENT ENDPOINT FOR ALL  
ROADS INTERSECTED BY HATCH  
( = SEGMENT ENDPOINT ONLY FOR  
ROAD SEPARATED FROM INTERSECTING  
ROAD BY ARC



1. VINE ST.  
2. RESERVATION RD.  
3. GEHMAN WAY