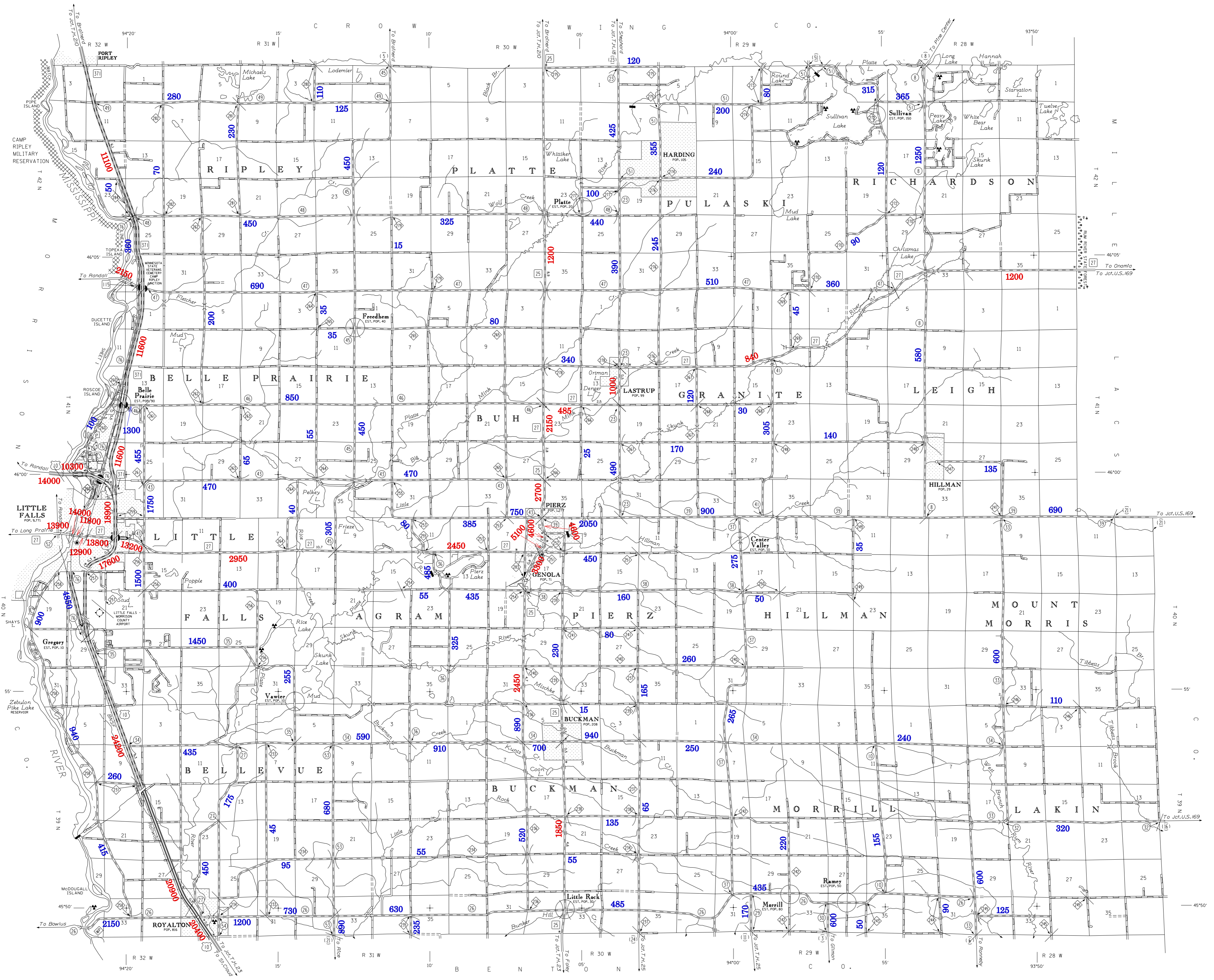


TRAFFIC VOLUMES ARE SUBJECT TO VARIABILITY AND CONSTRUCTION EFFECTS

FOR MORE INFO VISIT: <http://www.dot.state.mn.us/traffic/data/html/aadt.html>



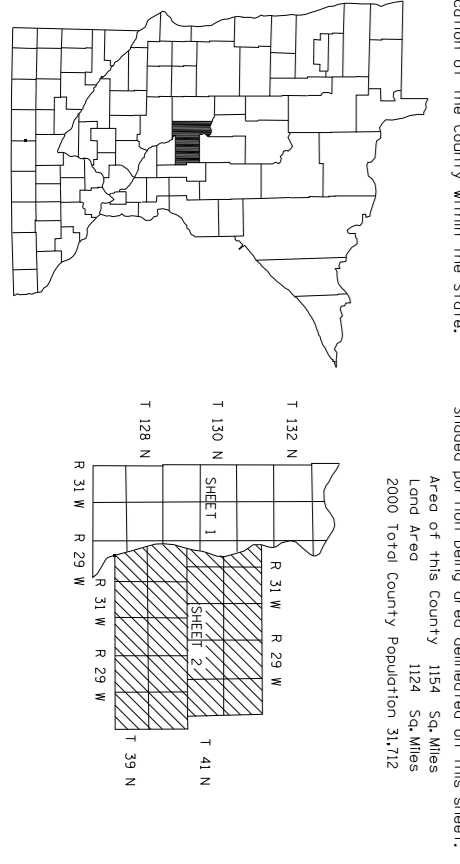
VOLUMES PREPARED BY
THE OFFICE OF
TRANSPORTATION DATA & ANALYSIS

NUMERALS INDICATE AVERAGE DAILY
TRAFFIC VOLUMES ON DESIGNATED ROADS.

TRUNK HIGHWAY ROUTES ARE 2009 A.A.D.T. VOLUMES
COUNTY SYSTEM ROADS ARE 2009 A.A.D.T. VOLUMES

FOR DESIGNATED ROADS :
/ = SEGMENT ENDPOINT FOR ALL
ROADS INTERSECTED BY HATCH
(= SEGMENT ENDPOINT ONLY FOR
ROAD SEPARATED FROM INTERSECTING
ROAD BY ARC

*NOT ALL FEATURES EXCEPT TOWNSHIP BOUNDARIES AND
COUNTY BOUNDARIES AS OF JANUARY 1, 2009.
NOTES ON INTERSECTION POINTS ARE SHOWN ON MAPS.



LEGEND

	ROAD AND ROADWAY FEATURES
	Trunk Highway
	County System Road
	Local Road
	Roadway Construction
	Roadway Maintenance
	Roadway Rehabilitation
	Roadway Widening
	Roadway Improvement
	Roadway Reconstruction
	Roadway Relocation
	Roadway Encroachment
	Roadway Obstruction
	Roadway Barrier
	Roadway Sign
	Roadway Light
	Roadway Structure
	Roadway Bridge
	Roadway Tunnel
	Roadway Culvert
	Roadway Drainage
	Roadway Erosion
	Roadway Slope
	Roadway Embankment
	Roadway Cut
	Roadway Fill
	Roadway Retention
	Roadway Foundation
	Roadway Subgrade
	Roadway Base
	Roadway Surface
	Roadway Pavement
	Roadway Concrete
	Roadway Asphalt
	Roadway Gravel
	Roadway Sand
	Roadway Stone
	Roadway Brick
	Roadway Tile
	Roadway Metal
	Roadway Wood
	Roadway Earth
	Roadway Rock
	Roadway Vegetation
	Roadway Trees
	Roadway Shrubs
	Roadway Grass
	Roadway Soil
	Roadway Water
	Roadway Air
	Roadway Light
	Roadway Sound
	Roadway Vibration
	Roadway Pollution
	Roadway Noise
	Roadway Safety
	Roadway Security
	Roadway Health
	Roadway Environment
	Roadway Community
	Roadway Culture
	Roadway History
	Roadway Future

LEGEND

	ROAD AND ROADWAY FEATURES
	Trunk Highway
	County System Road
	Local Road
	Roadway Construction
	Roadway Maintenance
	Roadway Rehabilitation
	Roadway Widening
	Roadway Improvement
	Roadway Reconstruction
	Roadway Relocation
	Roadway Encroachment
	Roadway Obstruction
	Roadway Barrier
	Roadway Sign
	Roadway Light
	Roadway Structure
	Roadway Bridge
	Roadway Tunnel
	Roadway Culvert
	Roadway Drainage
	Roadway Erosion
	Roadway Slope
	Roadway Embankment
	Roadway Cut
	Roadway Fill
	Roadway Retention
	Roadway Foundation
	Roadway Subgrade
	Roadway Base
	Roadway Surface
	Roadway Pavement
	Roadway Concrete
	Roadway Asphalt
	Roadway Gravel
	Roadway Sand
	Roadway Stone
	Roadway Brick
	Roadway Tile
	Roadway Metal
	Roadway Wood
	Roadway Earth
	Roadway Rock
	Roadway Vegetation
	Roadway Trees
	Roadway Shrubs
	Roadway Grass
	Roadway Soil
	Roadway Water
	Roadway Air
	Roadway Light
	Roadway Sound
	Roadway Vibration
	Roadway Pollution
	Roadway Noise
	Roadway Safety
	Roadway Security
	Roadway Health
	Roadway Environment
	Roadway Community
	Roadway Culture
	Roadway History
	Roadway Future

LEGEND

	ROAD AND ROADWAY FEATURES
	Trunk Highway
	County System Road
	Local Road
	Roadway Construction
	Roadway Maintenance
	Roadway Rehabilitation
	Roadway Widening
	Roadway Improvement
	Roadway Reconstruction
	Roadway Relocation
	Roadway Encroachment
	Roadway Obstruction
	Roadway Barrier
	Roadway Sign
	Roadway Light
	Roadway Structure
	Roadway Bridge
	Roadway Tunnel
	Roadway Culvert
	Roadway Drainage
	Roadway Erosion
	Roadway Slope
	Roadway Embankment
	Roadway Cut
	Roadway Fill
	Roadway Retention
	Roadway Foundation
	Roadway Subgrade
	Roadway Base
	Roadway Surface
	Roadway Pavement
	Roadway Concrete
	Roadway Asphalt
	Roadway Gravel
	Roadway Sand
	Roadway Stone
	Roadway Brick
	Roadway Tile
	Roadway Metal
	Roadway Wood
	Roadway Earth
	Roadway Rock
	Roadway Vegetation
	Roadway Trees
	Roadway Shrubs
	Roadway Grass
	Roadway Soil
	Roadway Water
	Roadway Air
	Roadway Light
	Roadway Sound
	Roadway Vibration
	Roadway Pollution
	Roadway Noise
	Roadway Safety
	Roadway Security
	Roadway Health
	Roadway Environment
	Roadway Community
	Roadway Culture
	Roadway History
	Roadway Future

LEGEND

	ROAD AND ROADWAY FEATURES
	Trunk Highway
	County System Road
	Local Road
	Roadway Construction
	Roadway Maintenance
	Roadway Rehabilitation
	Roadway Widening
	Roadway Improvement
	Roadway Reconstruction
	Roadway Relocation
	Roadway Encroachment
	Roadway Obstruction
	Roadway Barrier
	Roadway Sign
	Roadway Light
	Roadway Structure
	Roadway Bridge
	Roadway Tunnel
	Roadway Culvert
	Roadway Drainage
	Roadway Erosion
	Roadway Slope
	Roadway Embankment
	Roadway Cut
	Roadway Fill
	Roadway Retention
	Roadway Foundation
	Roadway Subgrade
	Roadway Base
	Roadway Surface
	Roadway Pavement
	Roadway Concrete
	Roadway Asphalt
	Roadway Gravel
	Roadway Sand
	Roadway Stone
	Roadway Brick
	Roadway Tile
	Roadway Metal
	Roadway Wood
	Roadway Earth
	Roadway Rock
	Roadway Vegetation
	Roadway Trees
	Roadway Shrubs
	Roadway Grass
	Roadway Soil
	Roadway Water
	Roadway Air
	Roadway Light
	Roadway Sound
	Roadway Vibration
	Roadway Pollution
	Roadway Noise
	Roadway Safety
	Roadway Security
	Roadway Health
	Roadway Environment
	Roadway Community
	Roadway Culture
	Roadway History
	Roadway Future

2009 TRAFFIC VOLUMES
GENERAL HIGHWAY MAP
MORRISON
COUNTY
MINNESOTA

PREPARED BY THE
MINNESOTA DEPARTMENT OF TRANSPORTATION
OFFICE OF TRANSPORTATION DATA & ANALYSIS
IN COOPERATION WITH
U.S. DEPARTMENT OF TRANSPORTATION
FEDERAL HIGHWAY ADMINISTRATION

SCALE
1 2 3 4 5 6 MILES
1 2 3 4 5 6 KILOMETERS

2009
BASIC DATA - 1917*

North Arrow
North Arrow System
of 1983