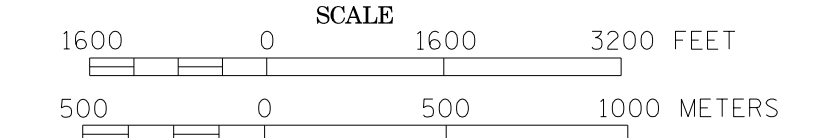


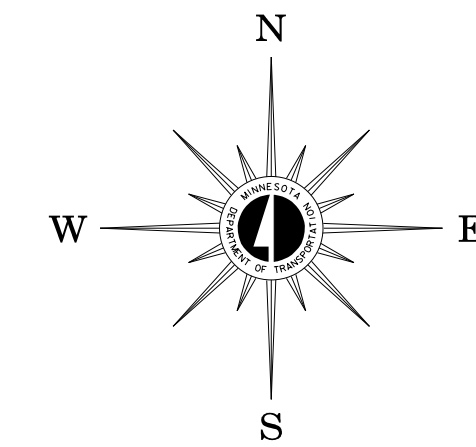
2009 TRAFFIC VOLUMES  
(SEE NOTE)

MUNICIPALITY OF  
**COTTAGE GROVE**

PREPARED BY THE  
MINNESOTA DEPARTMENT OF TRANSPORTATION  
OFFICE OF TRANSPORTATION DATA & ANALYSIS  
IN COOPERATION WITH  
U.S. DEPARTMENT OF TRANSPORTATION  
FEDERAL HIGHWAY ADMINISTRATION



2009  
BASIC DATA - 1993



LEGEND

- INTERSTATE TRUNK HIGHWAY.....
- U.S. TRUNK HIGHWAY.....
- STATE TRUNK HIGHWAY.....
- COUNTY STATE AID HIGHWAY.....
- COUNTY ROAD.....
- CORPORATE LIMITS.....
- PUBLIC ROAD.....
- PRIVATE ROAD.....

MUNICIPAL STATE AID  
STREET SYSTEM

LEGEND

- MUNICIPAL COUNTY STATE AID STREET.....
- MUNICIPAL STATE AID STREET.....
- COUNTY STATE AID HIGHWAY.....
- COUNTY ROAD.....
- TRUNK HIGHWAY.....

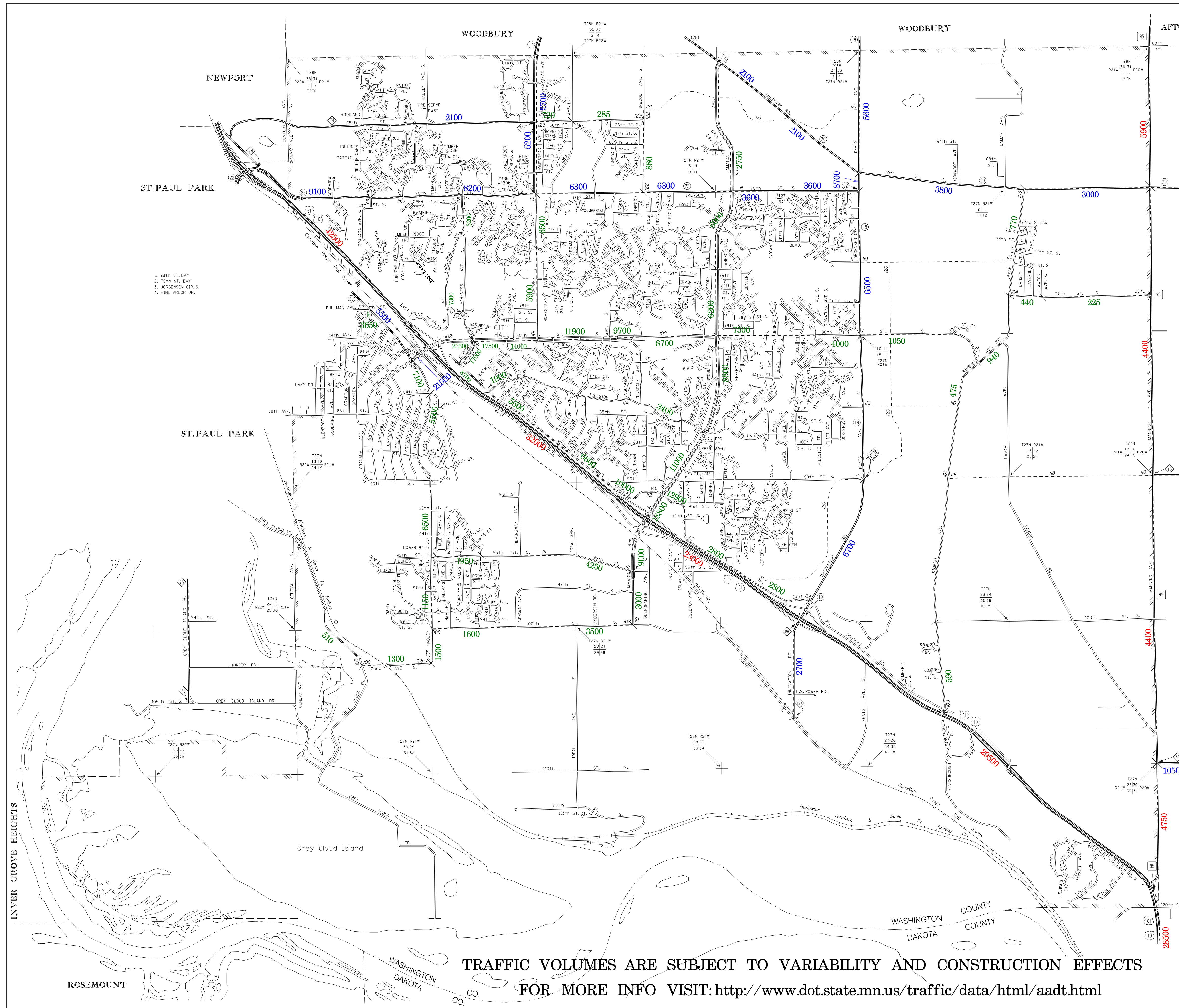
VOLUMES PREPARED BY  
THE OFFICE OF  
TRANSPORTATION DATA & ANALYSIS

NUMERALS INDICATE AVERAGE DAILY  
TRAFFIC VOLUMES ON DESIGNATED ROADS.

TRUNK HIGHWAY ROUTES ARE 2008 A.A.D.T. VOLUMES  
COUNTY SYSTEM ROADS ARE 2009 A.A.D.T. VOLUMES  
MUNICIPAL STREET ROUTES ARE 2009 A.A.D.T. VOLUMES

FOR DESIGNATED ROADS :  
/ = SEGMENT ENDPOINT FOR ALL  
ROADS INTERSECTED BY HATCH  
( = SEGMENT ENDPOINT ONLY FOR  
ROAD SEPARATED FROM INTERSECTING  
ROAD BY ARC

TRAFFIC VOLUMES ARE SUBJECT TO VARIABILITY AND CONSTRUCTION EFFECTS  
FOR MORE INFO VISIT: <http://www.dot.state.mn.us/traffic/data/html/aadt.html>



1. 78th ST. BAY
2. 79th ST. BAY
3. JORGENSEN CIR. S.
4. PINE ARBOR DR.