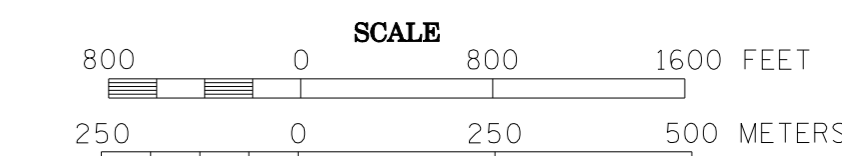


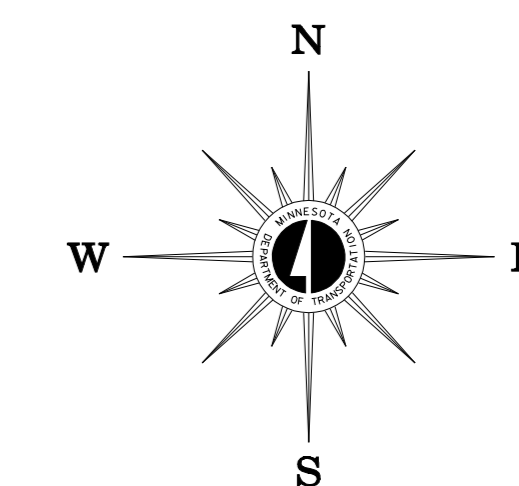
2008 TRAFFIC VOLUMES

MUNICIPALITIES OF  
**WATONWAN CO.**

PREPARED BY THE  
MINNESOTA DEPARTMENT OF TRANSPORTATION  
OFFICE OF TRANSPORTATION DATA & ANALYSIS  
IN COOPERATION WITH  
U.S. DEPARTMENT OF TRANSPORTATION  
FEDERAL HIGHWAY ADMINISTRATION



2008  
BASIC DATA - 1977

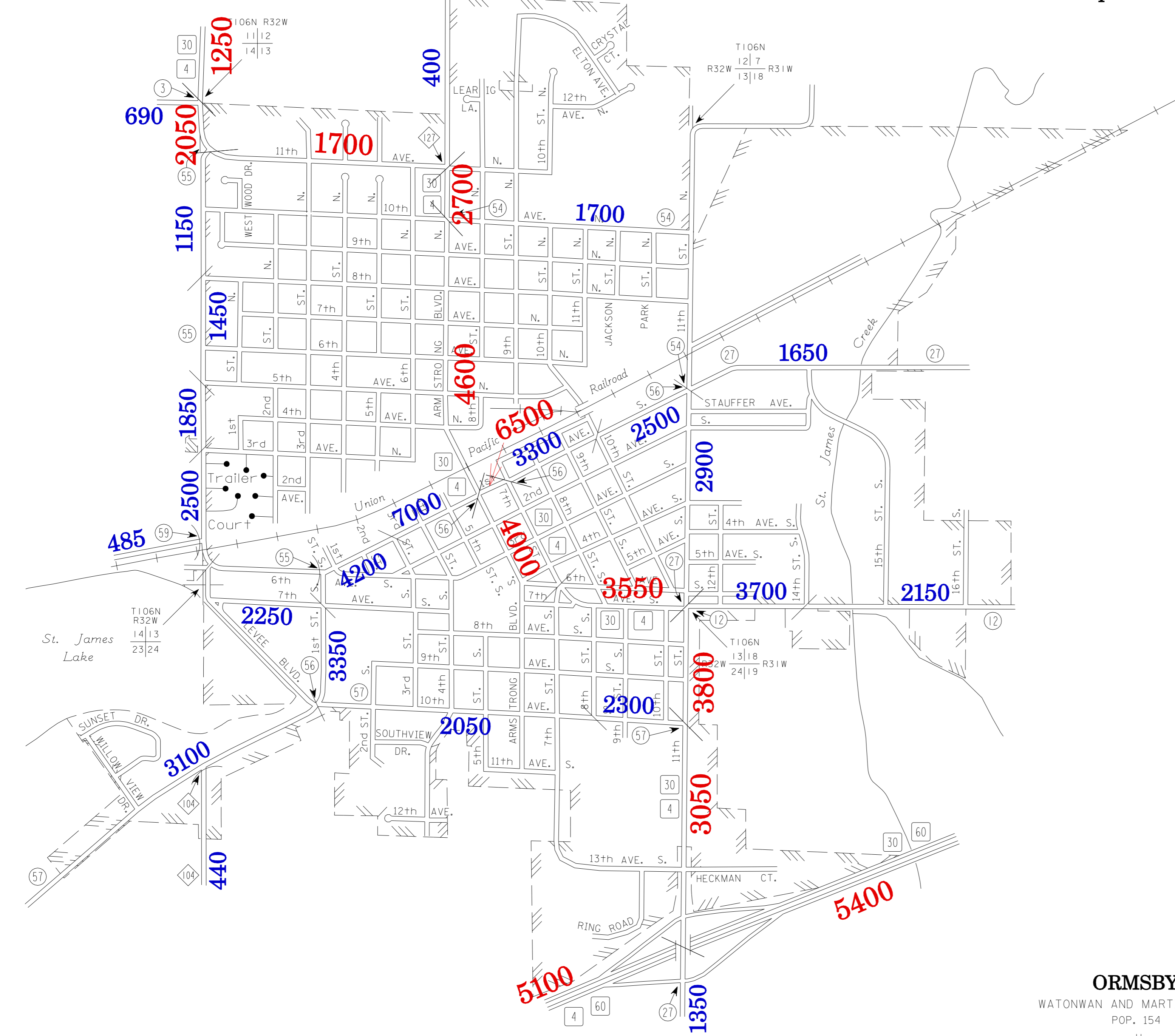


**LEGEND**

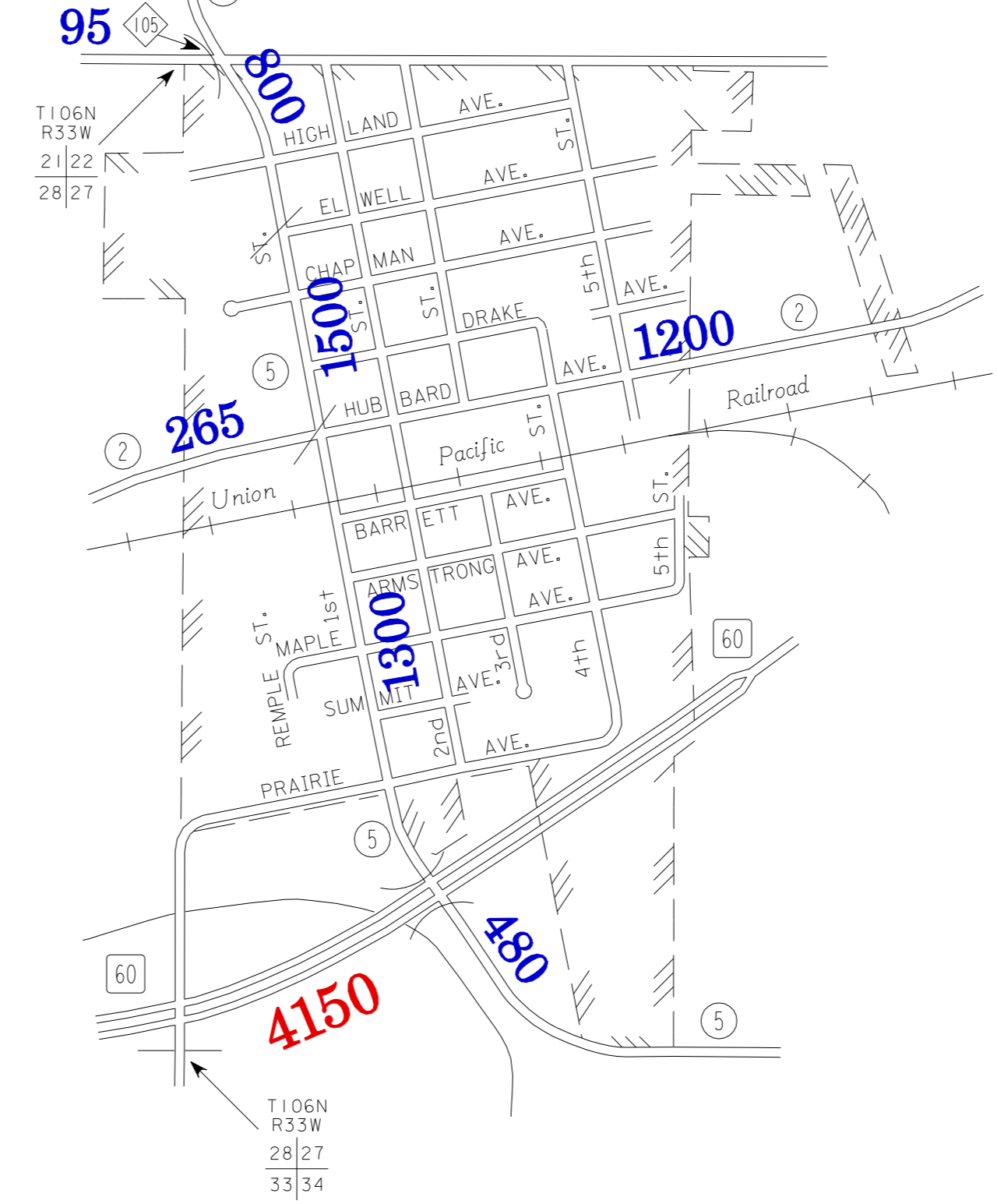
- INTERSTATE TRUNK HIGHWAY..... (I-95)
- U.S. TRUNK HIGHWAY..... (US-10)
- STATE TRUNK HIGHWAY..... (ST-55)
- COUNTY STATE AID HIGHWAY..... (CSA-23)
- COUNTY ROAD..... (CR-12)
- PUBLIC ROAD..... (PR-1)
- PRIVATE ROAD..... (PR-1)
- CORPORATE LIMITS..... (---)

TRAFFIC VOLUMES ARE SUBJECT TO VARIABILITY AND CONSTRUCTION EFFECTS  
FOR MORE INFO VISIT: <http://www.dot.state.mn.us/traffic/data/html/aadt.html>

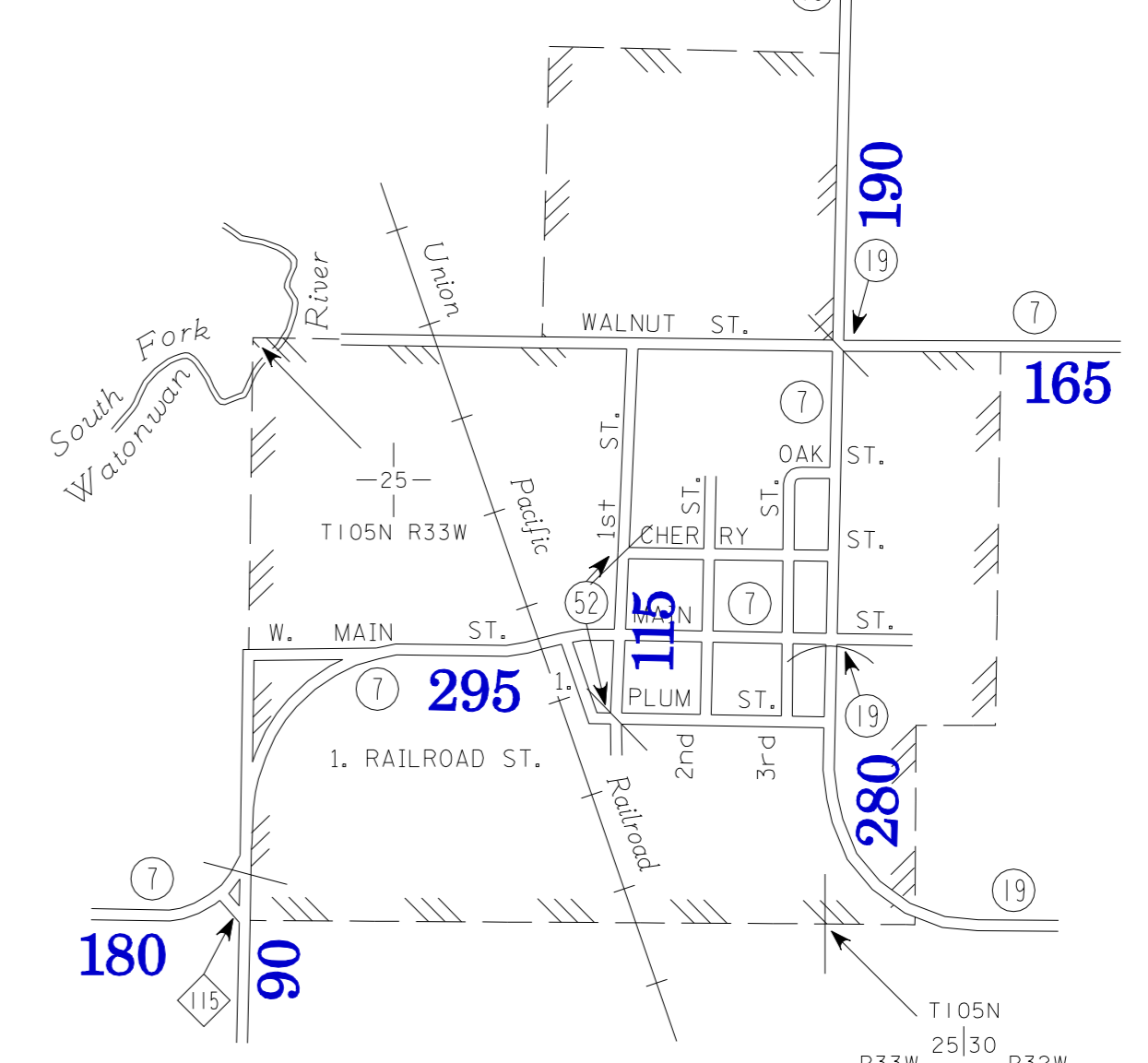
**SAINT JAMES**  
WATONWAN COUNTY  
POP. 4,695



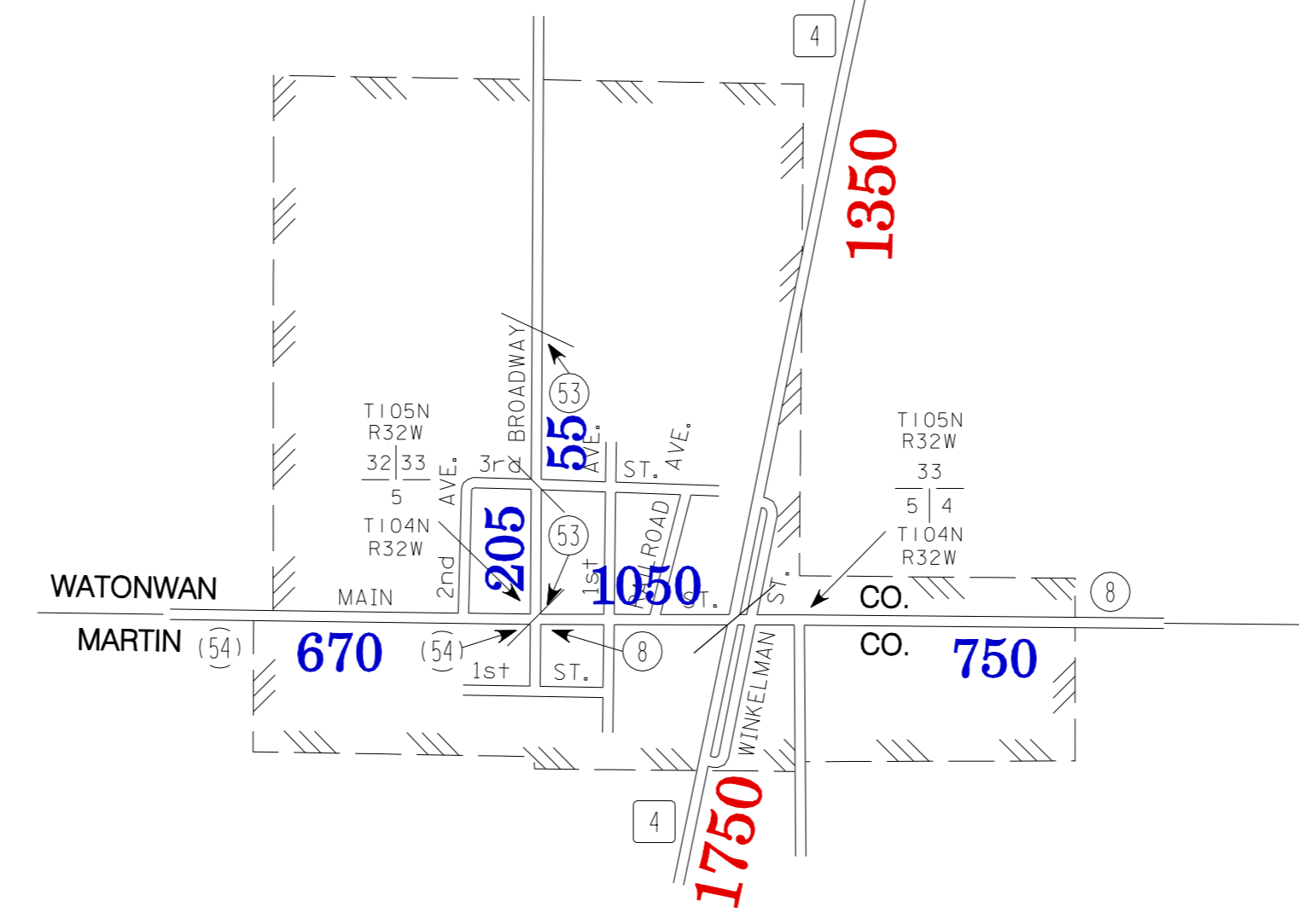
**BUTTERFIELD**  
WATONWAN COUNTY  
POP. 564



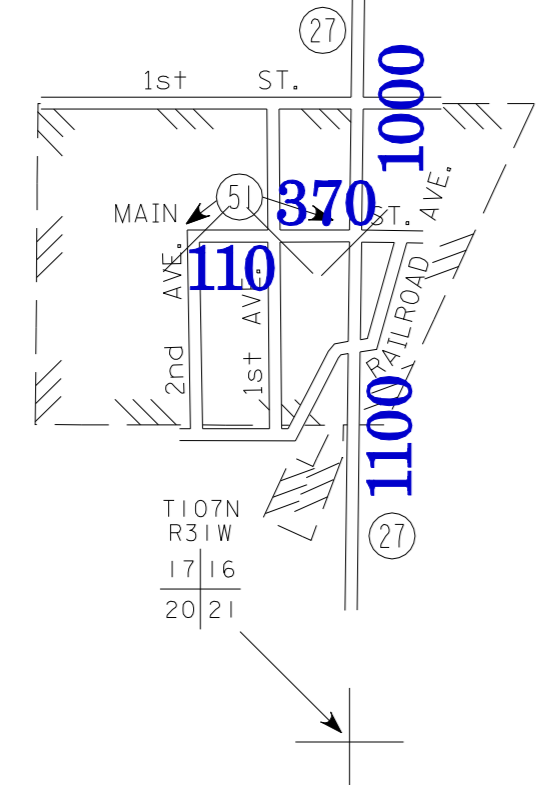
**ODIN**  
WATONWAN COUNTY  
POP. 125



**ORMSBY**  
WATONWAN AND MARTIN COUNTIES  
POP. 154



**LA SALLE**  
WATONWAN COUNTY  
POP. 90



VOLUMES PREPARED BY  
THE OFFICE OF  
TRANSPORTATION DATA & ANALYSIS

NUMERALS INDICATE AVERAGE DAILY  
TRAFFIC VOLUMES ON DESIGNATED ROADS.

TRUNK HIGHWAY ROUTES ARE 2008 A.A.D.T. VOLUMES  
COUNTY SYSTEM ROADS ARE 2008 A.A.D.T. VOLUMES

FOR DESIGNATED ROADS :  
/ = SEGMENT ENDPOINT FOR ALL  
ROADS INTERSECTED BY HATCH  
( = SEGMENT ENDPOINT ONLY FOR  
ROAD SEPARATED FROM INTERSECTING  
ROAD BY ARC

MUNICIPALITIES SHOWN  
ON THIS SHEET  
BUTTERFIELD  
LA SALLE  
ODIN  
ORMSBY  
ST. JAMES

NOTE: 2000 U.S. CENSUS FIGURES SHOWN FOR ALL MUNICIPALITIES UNLESS OTHERWISE STATED.