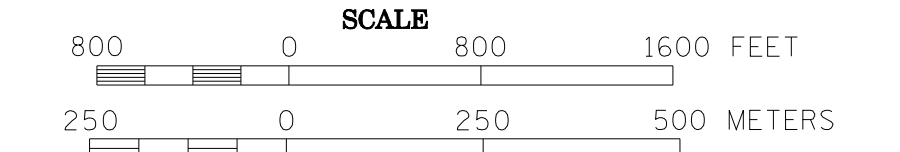
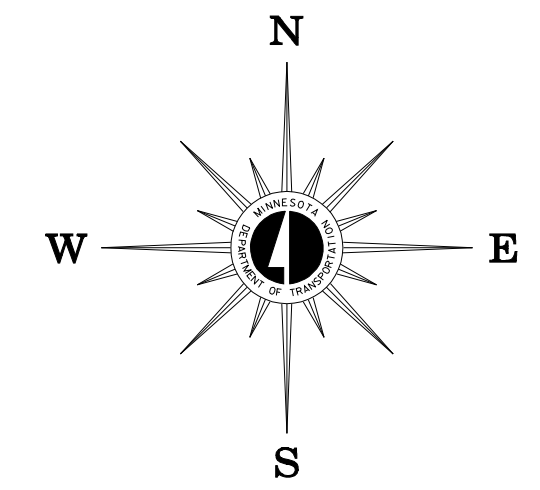


2008 TRAFFIC VOLUMES
MUNICIPALITIES OF
TRAVERSE CO.

PREPARED BY THE
MINNESOTA DEPARTMENT OF TRANSPORTATION
OFFICE OF TRANSPORTATION DATA & ANALYSIS
IN COOPERATION WITH
U.S. DEPARTMENT OF TRANSPORTATION
FEDERAL HIGHWAY ADMINISTRATION

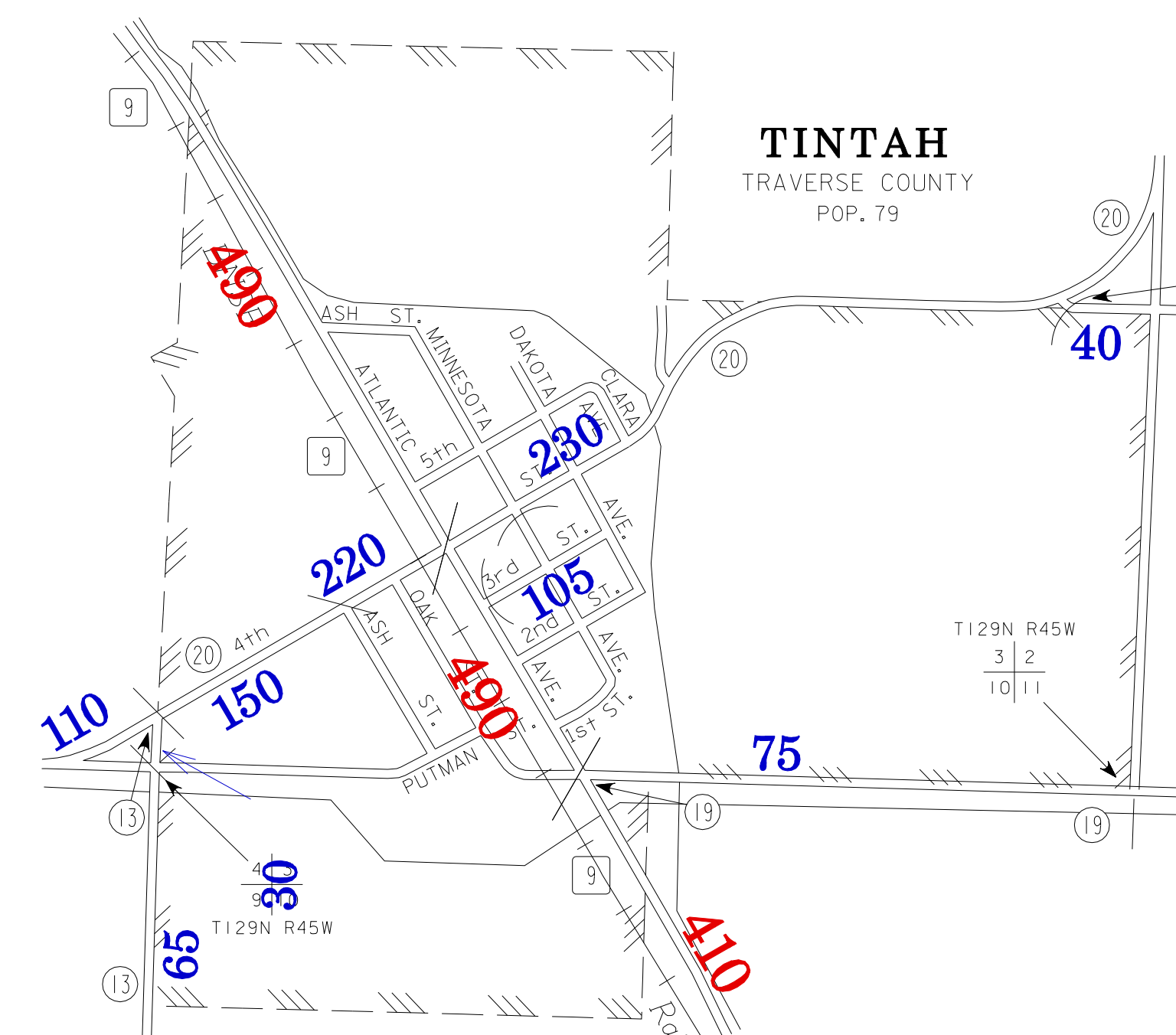
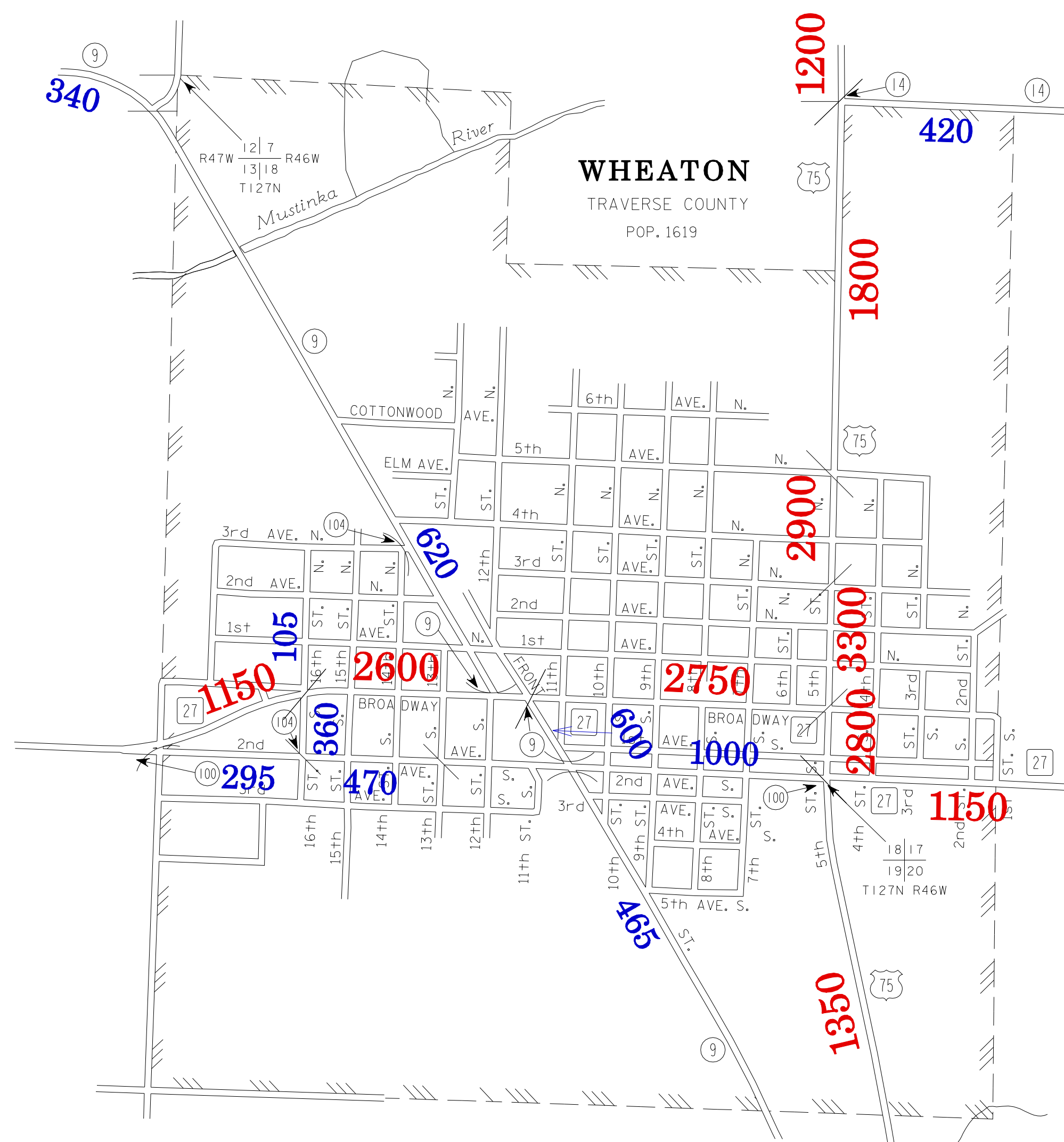
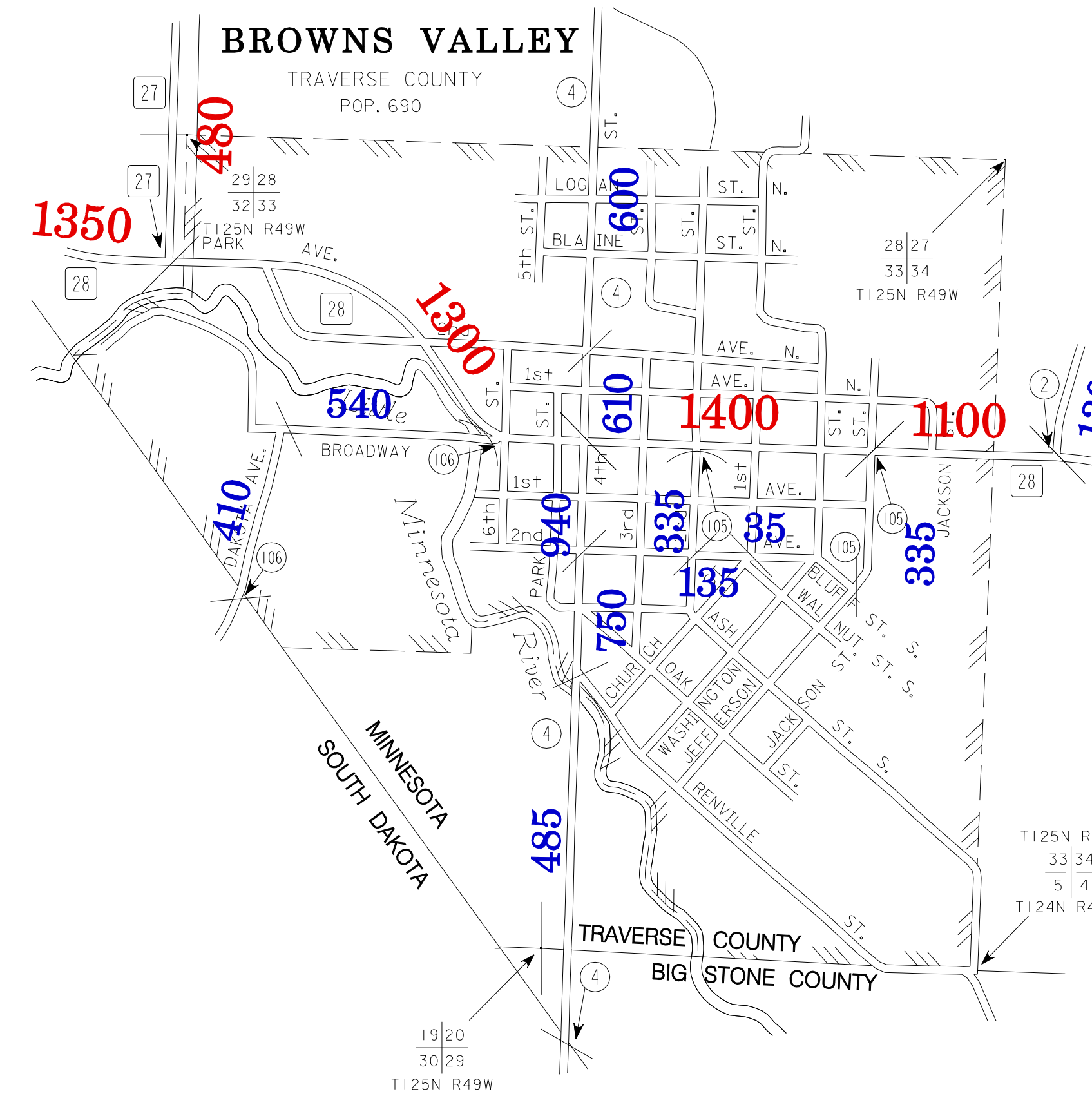
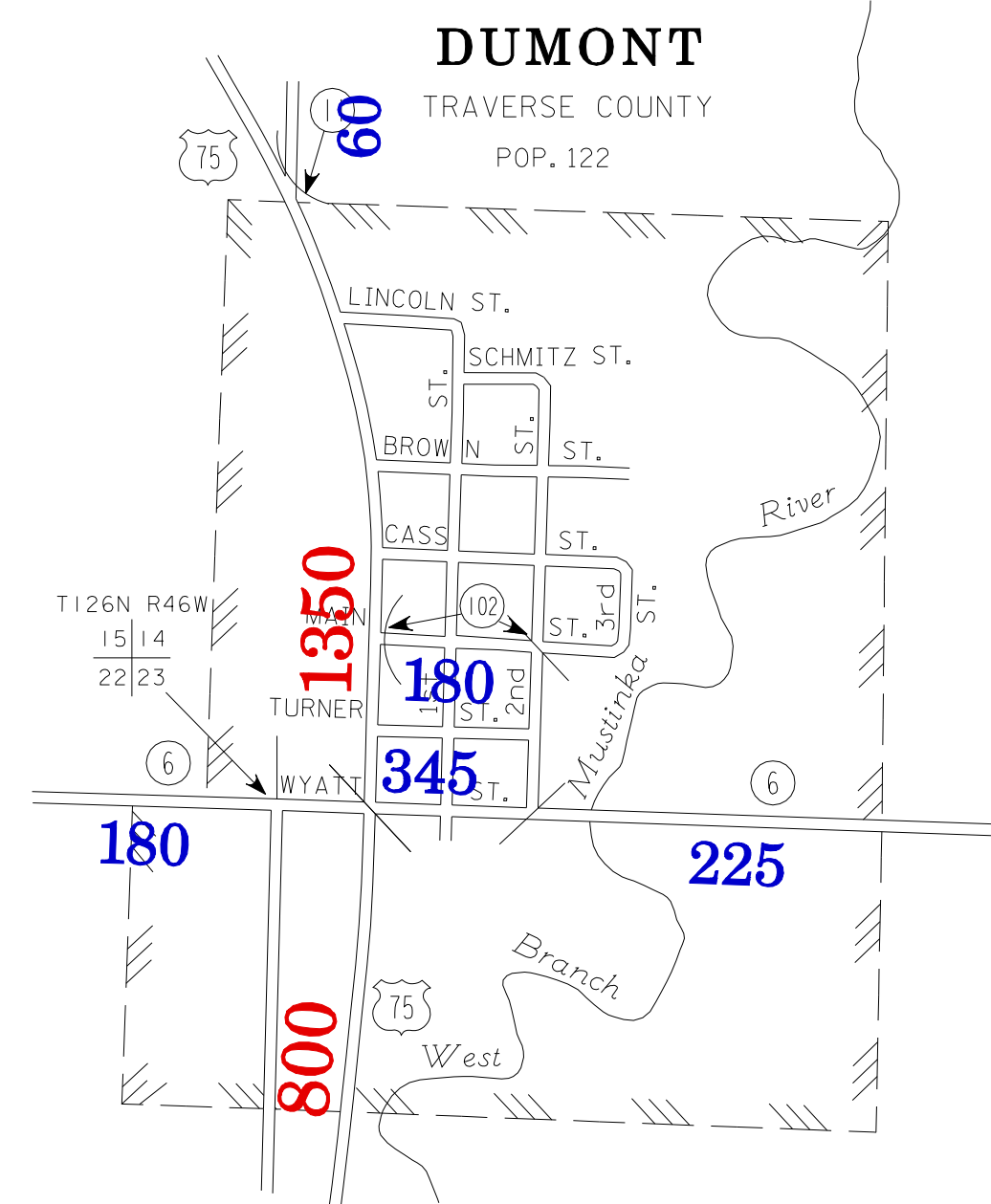


2008
BASIC DATA - 1977



LEGEND

- INTERSTATE TRUNK HIGHWAY..... (I-95)
- U.S. TRUNK HIGHWAY..... (US-10)
- STATE TRUNK HIGHWAY..... (MN-55)
- COUNTY STATE AID HIGHWAY..... (MN-23)
- COUNTY ROAD..... (CR-14)
- PUBLIC ROAD..... (PR-10)
- PRIVATE ROAD..... (PR-10)
- CORPORATE LIMITS..... (---)



VOLUMES PREPARED BY
THE OFFICE OF
TRANSPORTATION DATA & ANALYSIS

NUMERALS INDICATE AVERAGE DAILY
TRAFFIC VOLUMES ON DESIGNATED ROADS.

TRUNK HIGHWAY ROUTES ARE 2008 A.A.D.T. VOLUMES
COUNTY SYSTEM ROADS ARE 2008 A.A.D.T. VOLUMES

FOR DESIGNATED ROADS :
/ = SEGMENT ENDPOINT FOR ALL
ROADS INTERSECTED BY HATCH
(= SEGMENT ENDPOINT ONLY FOR
ROAD SEPARATED FROM INTERSECTING
ROAD BY ARC

TRAFFIC VOLUMES ARE SUBJECT TO VARIABILITY AND CONSTRUCTION EFFECTS
FOR MORE INFO VISIT: <http://www.dot.state.mn.us/traffic/data/html/aadt.html>

MUNICIPALITIES SHOWN
ON THIS SHEET
BROWNS VALLEY
DUMONT
TINTAH
WHEATON

NOTE: 2000 U.S. CENSUS FIGURES SHOWN FOR ALL MUNICIPALITIES UNLESS OTHERWISE STATED.