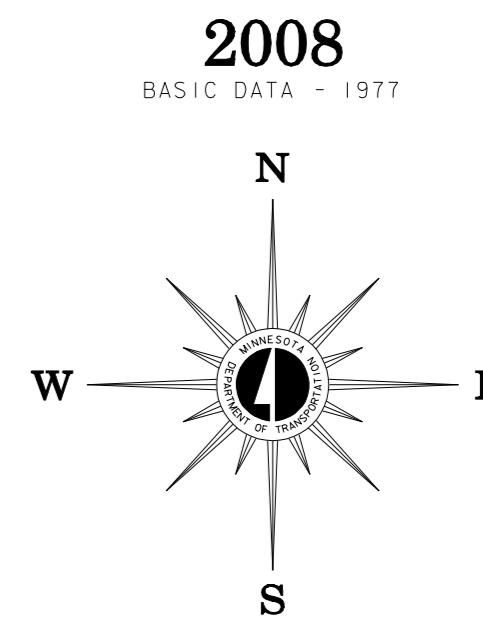
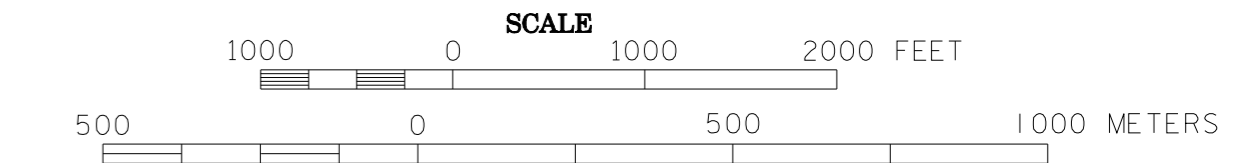
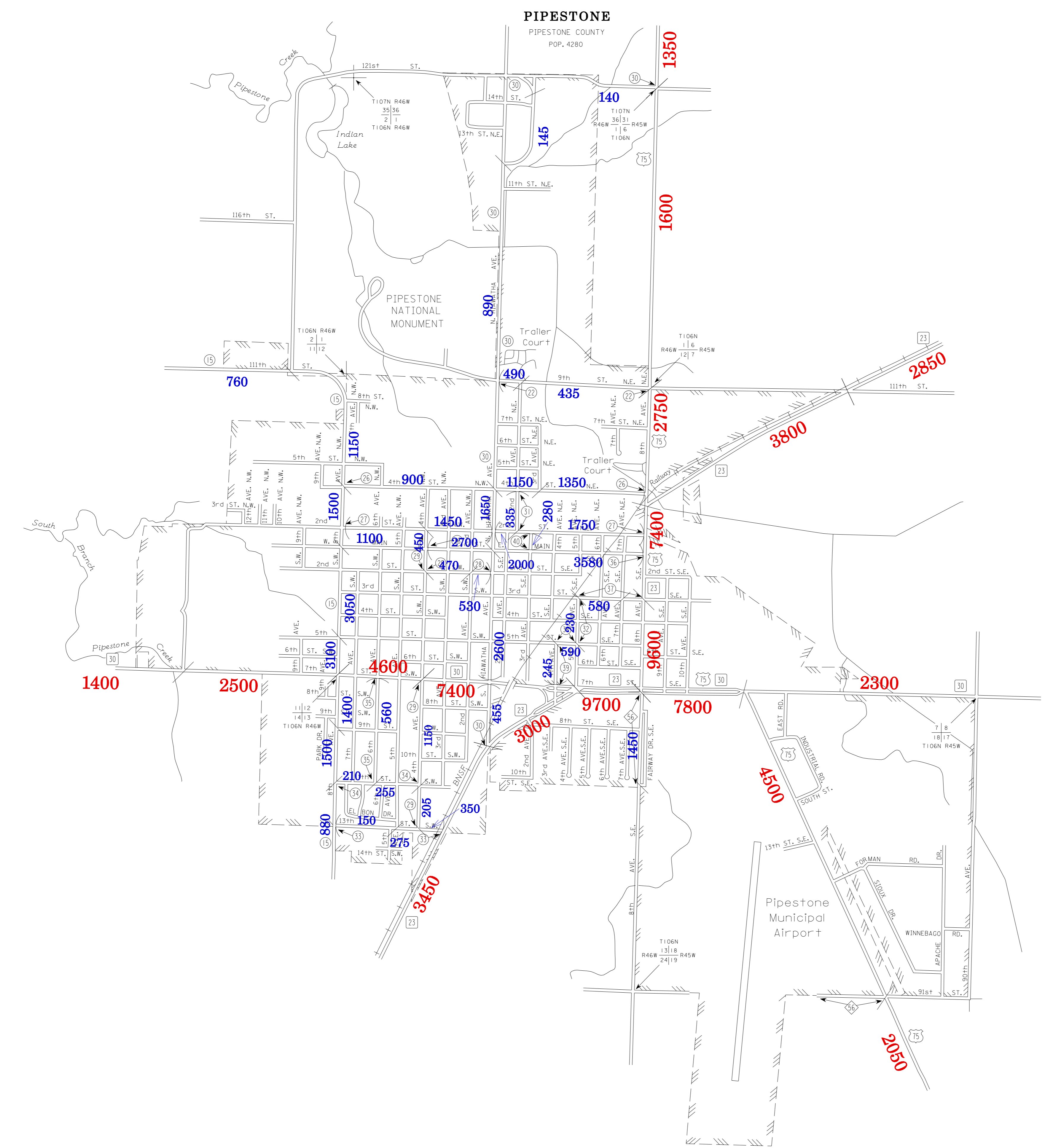


2008 TRAFFIC VOLUMES
MUNICIPALITIES OF
PIPESTONE CO.
PREPARED BY THE
MINNESOTA DEPARTMENT OF TRANSPORTATION
OFFICE OF TRANSPORTATION DATA & ANALYSIS
IN COOPERATION WITH
U.S. DEPARTMENT OF TRANSPORTATION
FEDERAL HIGHWAY ADMINISTRATION



- LEGEND**
- INTERSTATE TRUNK HIGHWAY..... (35)
 - U.S. TRUNK HIGHWAY..... (75)
 - STATE TRUNK HIGHWAY..... (55)
 - COUNTY STATE AID HIGHWAY..... (23)
 - COUNTY ROAD..... (30)
 - PUBLIC ROAD.....
 - PRIVATE ROAD.....
 - CORPORATE LIMITS.....



VOLUMES PREPARED BY
THE OFFICE OF
TRANSPORTATION DATA & ANALYSIS

NUMERALS INDICATE AVERAGE DAILY
TRAFFIC VOLUMES ON DESIGNATED ROADS.

TRUNK HIGHWAY ROUTES ARE 2008 A.A.D.T. VOLUMES
COUNTY SYSTEM ROADS ARE 2008 A.A.D.T. VOLUMES

FOR DESIGNATED ROADS :
/ = SEGMENT ENDPOINT FOR ALL
ROADS INTERSECTED BY HATCH
(= SEGMENT ENDPOINT ONLY FOR
ROAD SEPARATED FROM INTERSECTING
ROAD BY ARC

TRAFFIC VOLUMES ARE SUBJECT TO VARIABILITY AND CONSTRUCTION EFFECTS
FOR MORE INFO VISIT: <http://www.dot.state.mn.us/traffic/data/html/aadt.html>

MUNICIPALITIES SHOWN
ON THIS SHEET
PIPESTONE