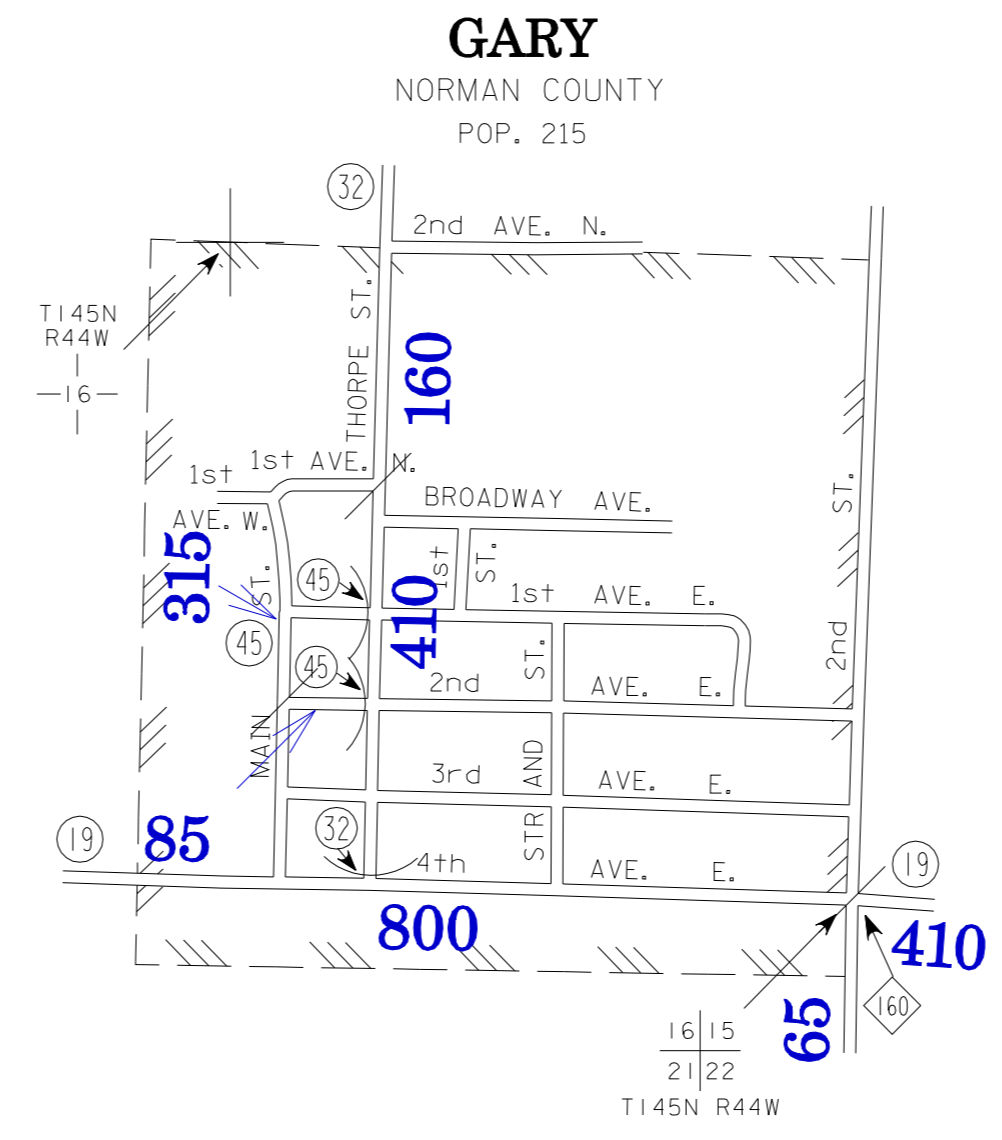
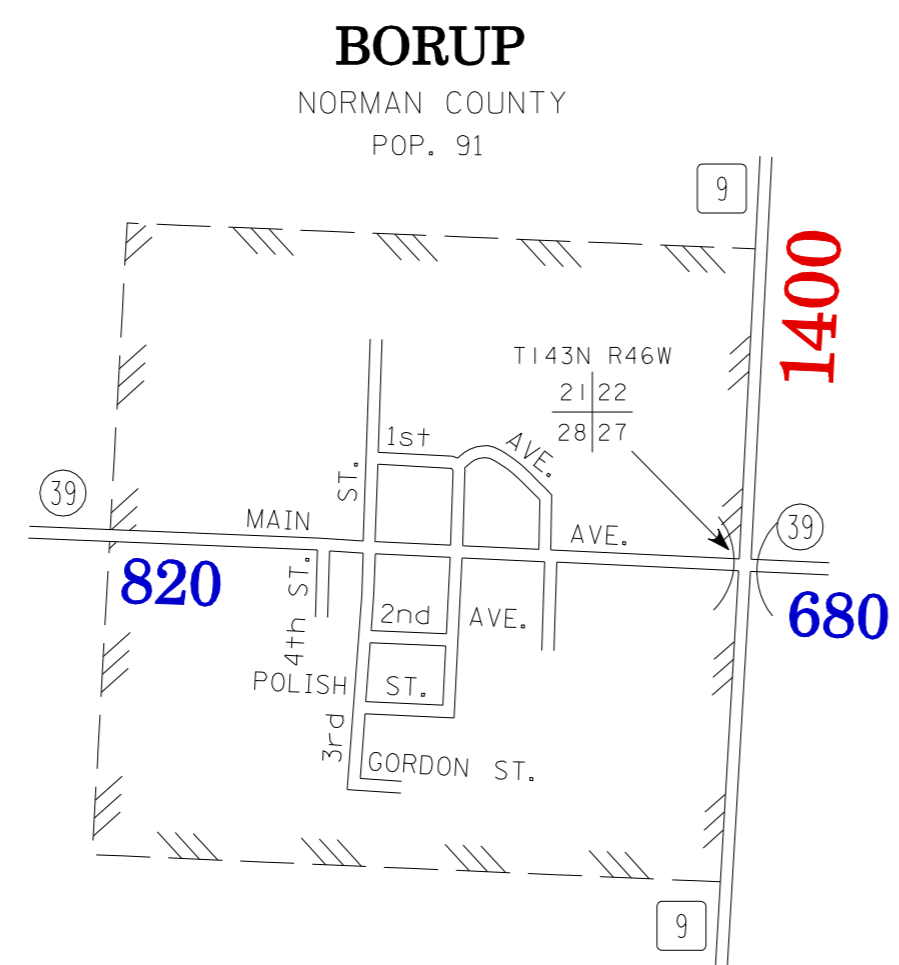


NUMERALS INDICATE AVERAGE DAILY TRAFFIC VOLUMES ON DESIGNATED ROADS.

TRUNK HIGHWAY ROUTES ARE 2008 A.A.D.T. VOLUMES
COUNTY SYSTEM ROADS ARE 2008 A.A.D.T. VOLUMES

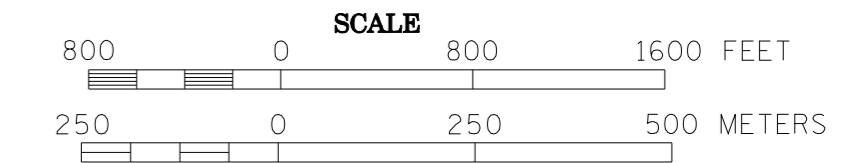
FOR DESIGNATED ROADS :
/ = SEGMENT ENDPOINT FOR ALL ROADS INTERSECTED BY HATCH
(= SEGMENT ENDPOINT ONLY FOR ROAD SEPARATED FROM INTERSECTING ROAD BY ARC



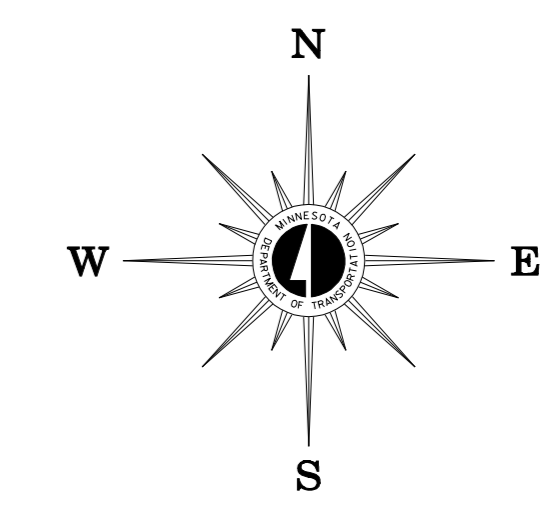
2008 TRAFFIC VOLUMES

MUNICIPALITIES OF NORMAN COUNTY

PREPARED BY THE
MINNESOTA DEPARTMENT OF TRANSPORTATION
OFFICE OF TRANSPORTATION DATA & ANALYSIS
IN COOPERATION WITH
U.S. DEPARTMENT OF TRANSPORTATION
FEDERAL HIGHWAY ADMINISTRATION



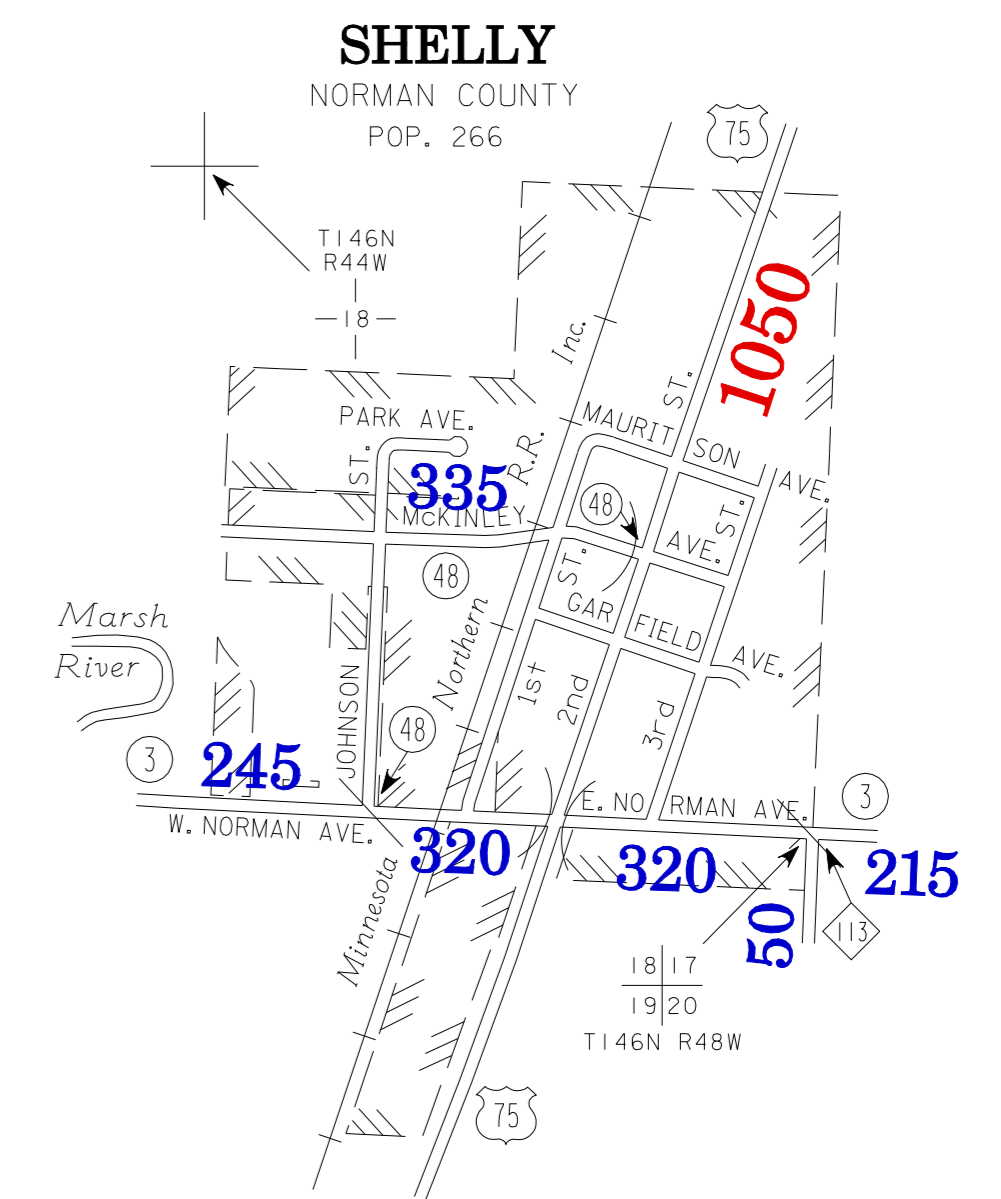
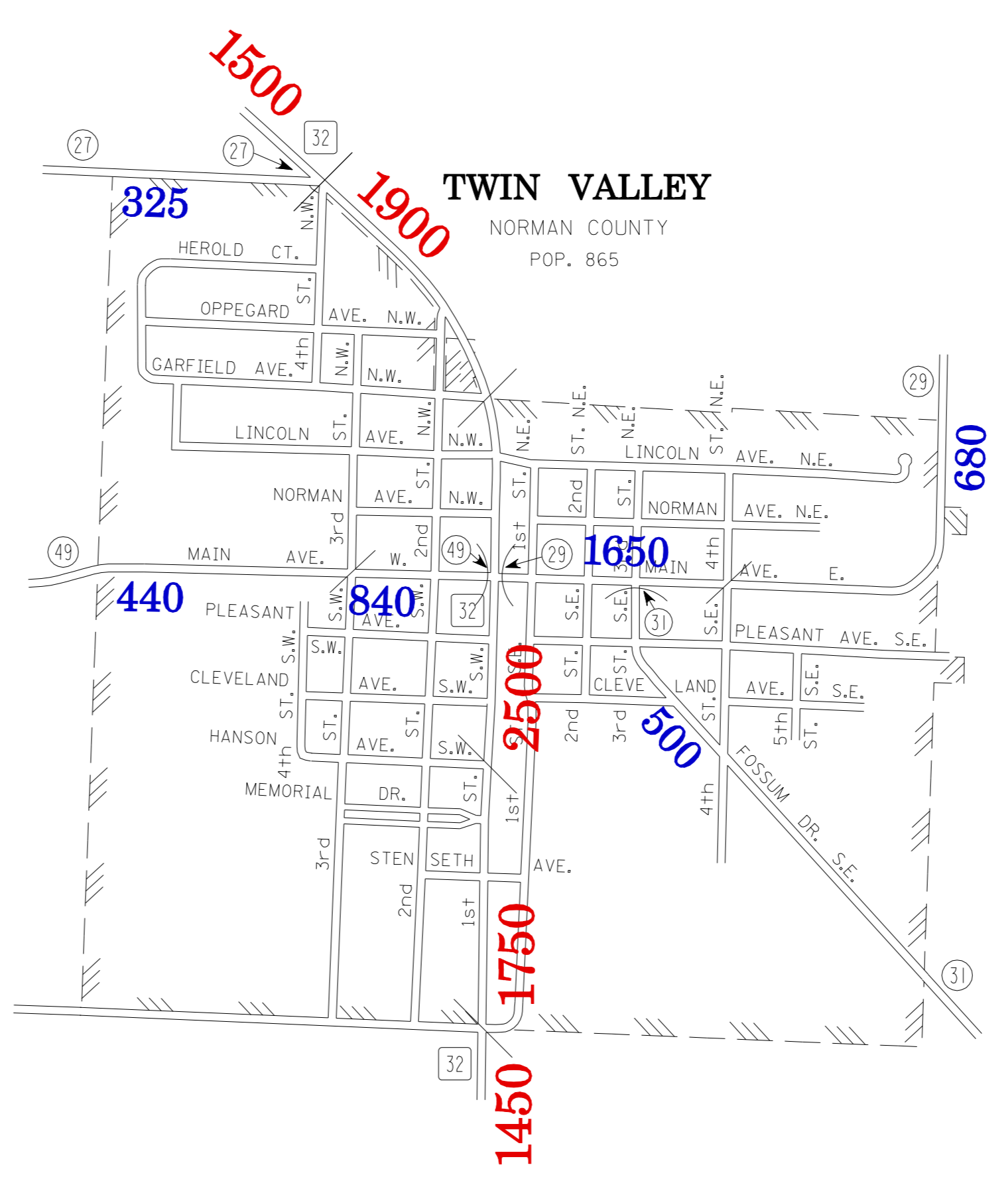
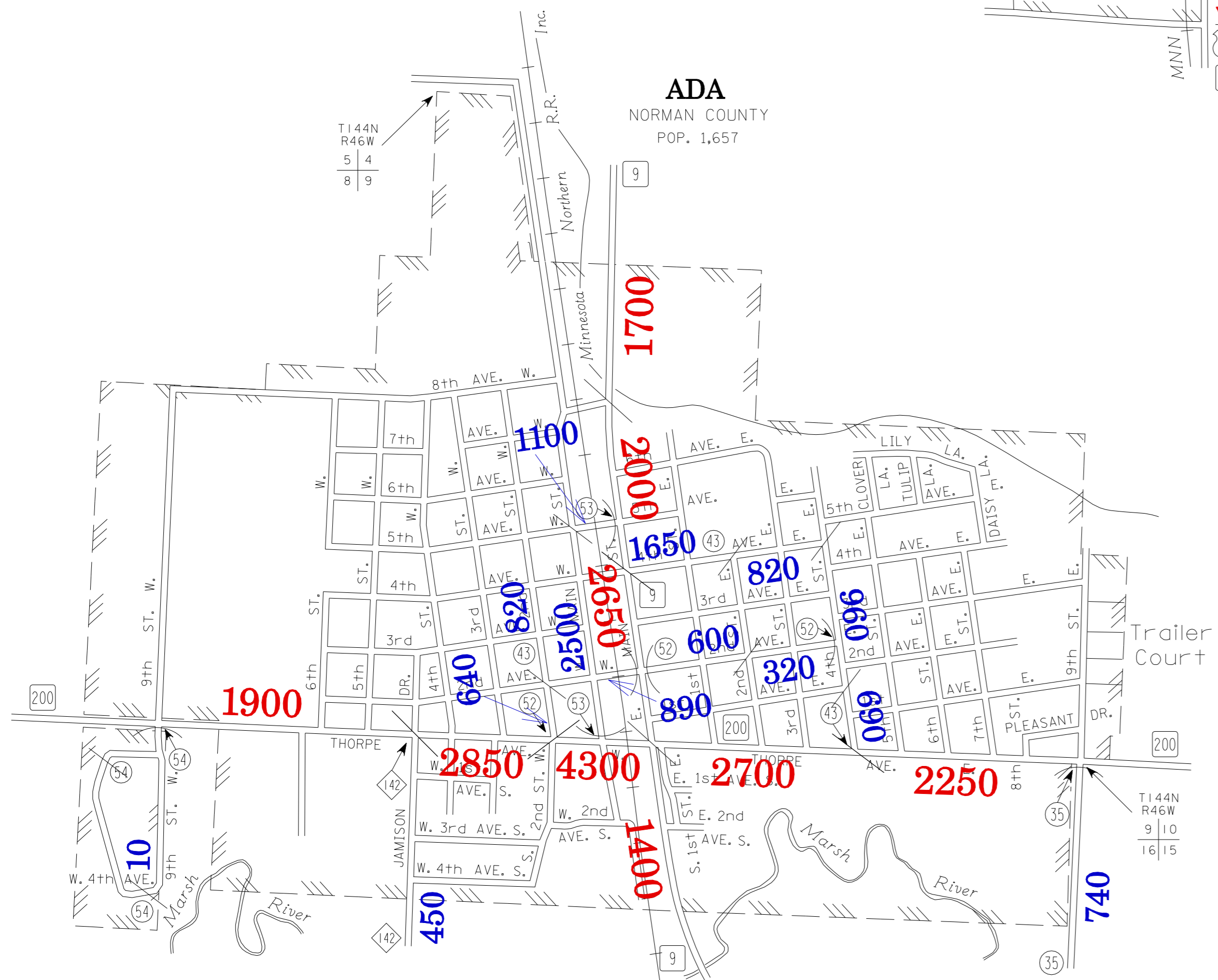
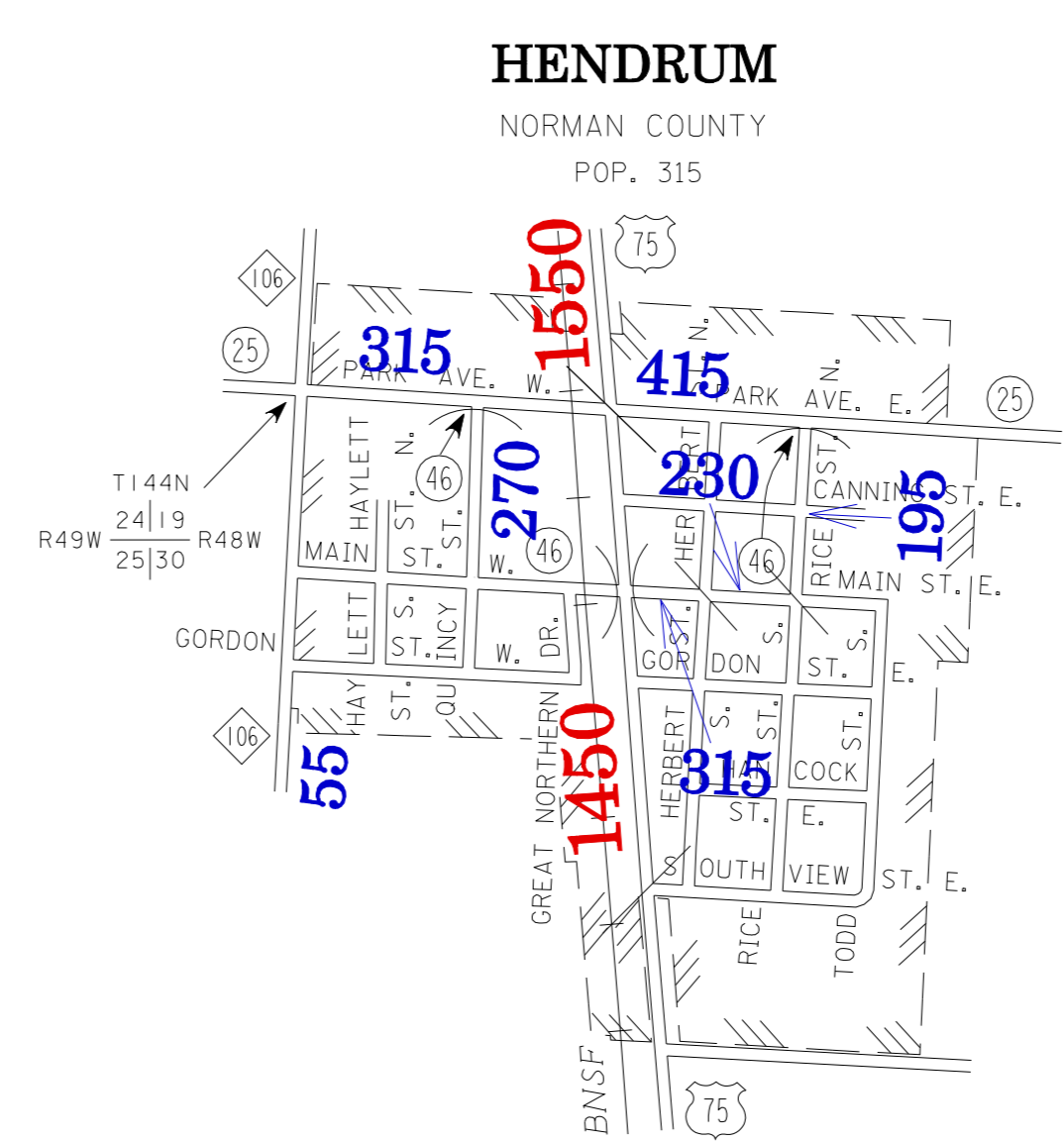
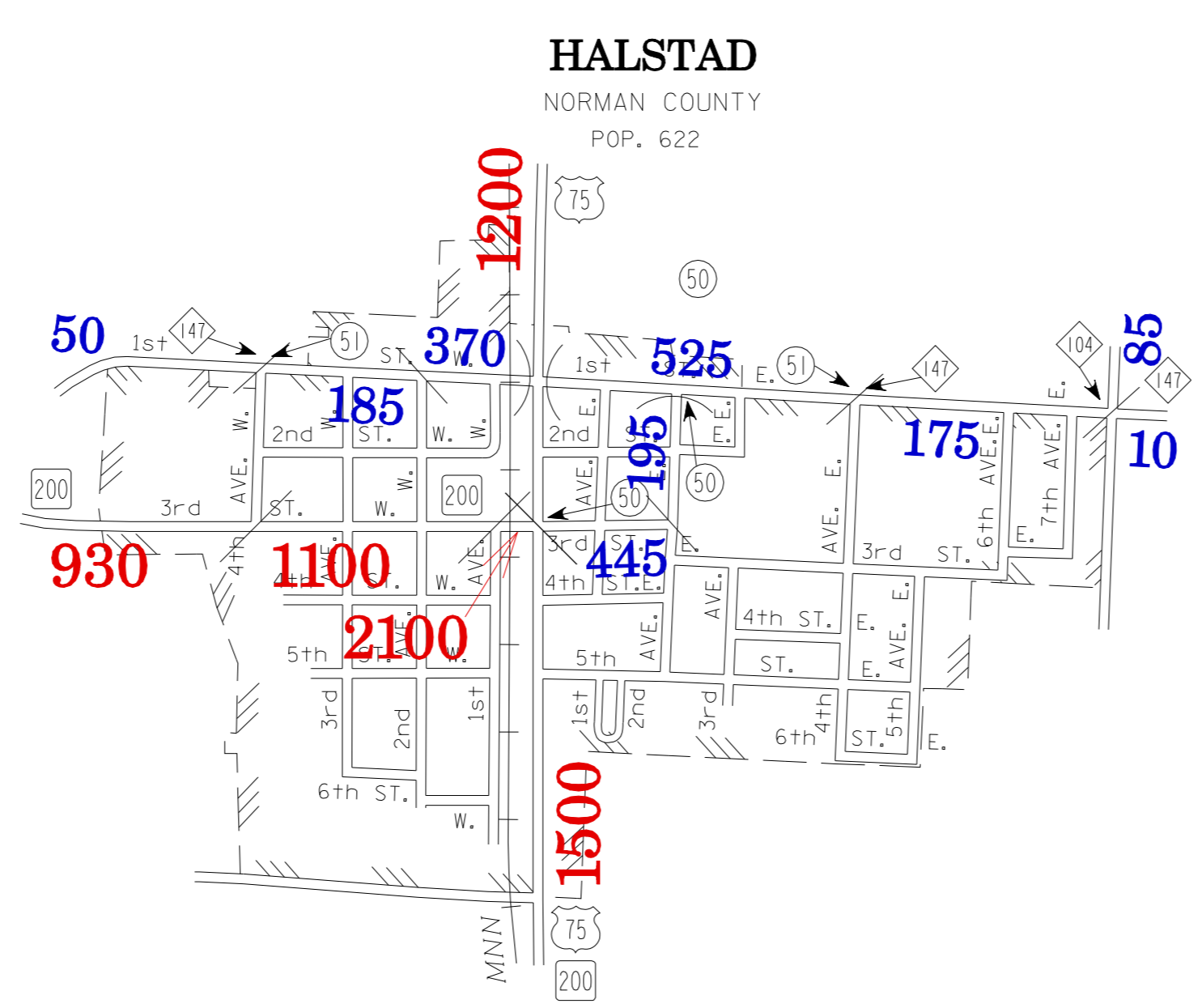
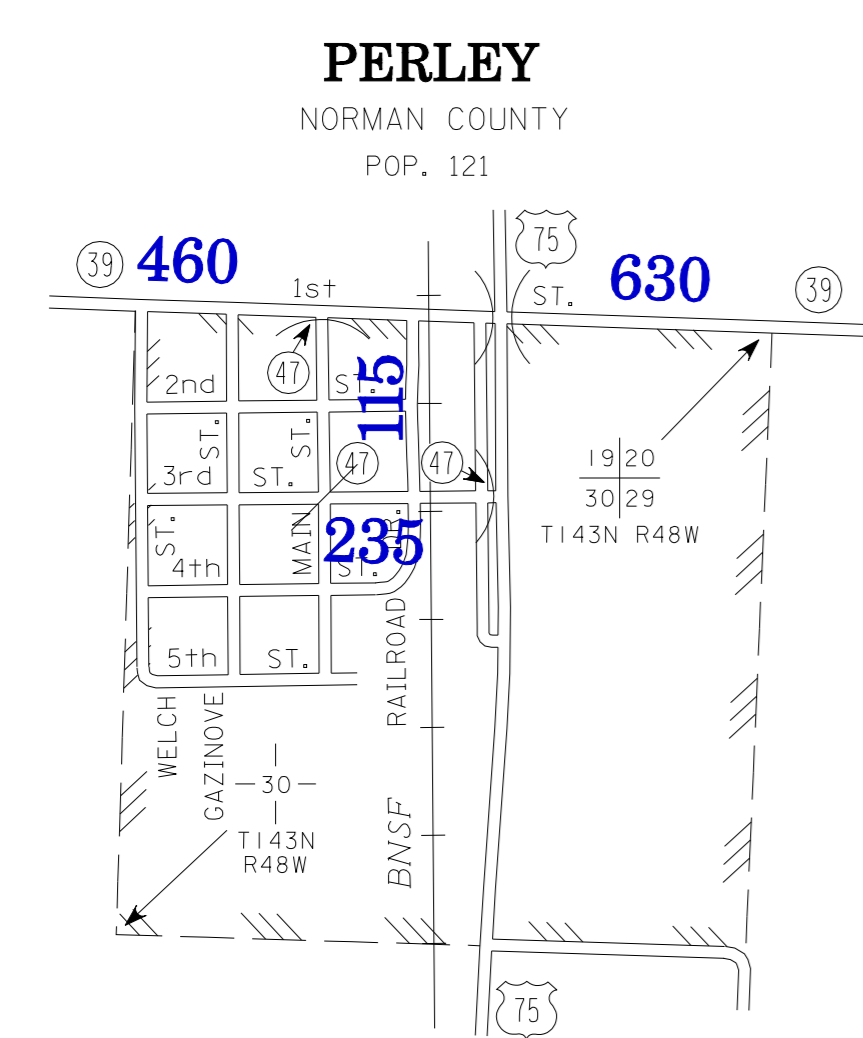
2008
BASIC DATA - 2003



LEGEND

- INTERSTATE TRUNK HIGHWAY..... (I-95)
- U.S. TRUNK HIGHWAY..... (US-16)
- STATE TRUNK HIGHWAY..... (ST-55)
- COUNTY STATE AID HIGHWAY..... (CS-23)
- COUNTY ROAD..... (CR-10)
- PUBLIC ROAD..... (PR-10)
- PRIVATE ROAD..... (PR-10)
- CORPORATE LIMITS..... (CL-10)

VOLUMES PREPARED BY
THE OFFICE OF
TRANSPORTATION DATA & ANALYSIS



TRAFFIC VOLUMES ARE SUBJECT TO VARIABILITY AND CONSTRUCTION EFFECTS
FOR MORE INFO VISIT: <http://www.dot.state.mn.us/traffic/data/html/aadt.html>

- MUNICIPALITIES SHOWN ON THIS SHEET
- ADA
 - BORUP
 - GARY
 - HALSTAD
 - HENDRUM
 - PERLEY
 - SHELLY
 - TWIN VALLEY

NOTE: 2000 U.S. CENSUS FIGURES SHOWN FOR ALL MUNICIPALITIES UNLESS OTHERWISE STATED.