

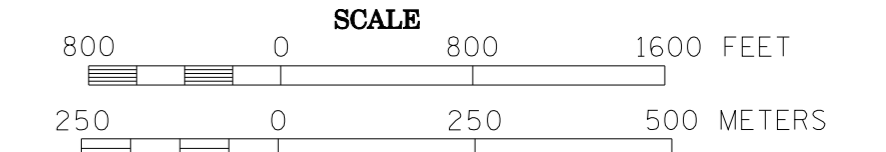
TRAFFIC VOLUMES ARE SUBJECT TO VARIABILITY AND CONSTRUCTION EFFECTS

FOR MORE INFO VISIT: <http://www.dot.state.mn.us/traffic/data/html/aadt.html>

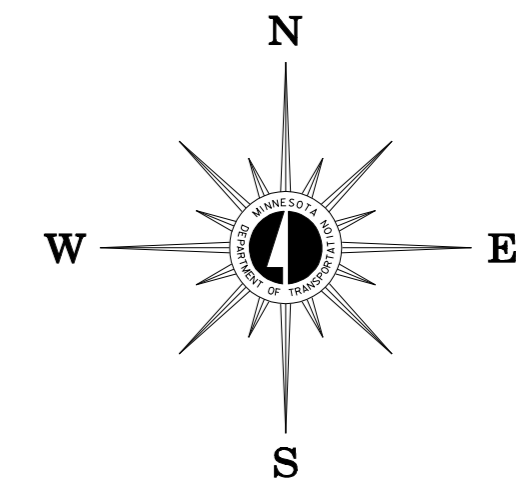
2008 TRAFFIC VOLUMES

MUNICIPALITIES OF
MOWER CO.

PREPARED BY THE
MINNESOTA DEPARTMENT OF TRANSPORTATION
OFFICE OF TRANSPORTATION DATA & ANALYSIS
IN COOPERATION WITH
U.S. DEPARTMENT OF TRANSPORTATION
FEDERAL HIGHWAY ADMINISTRATION

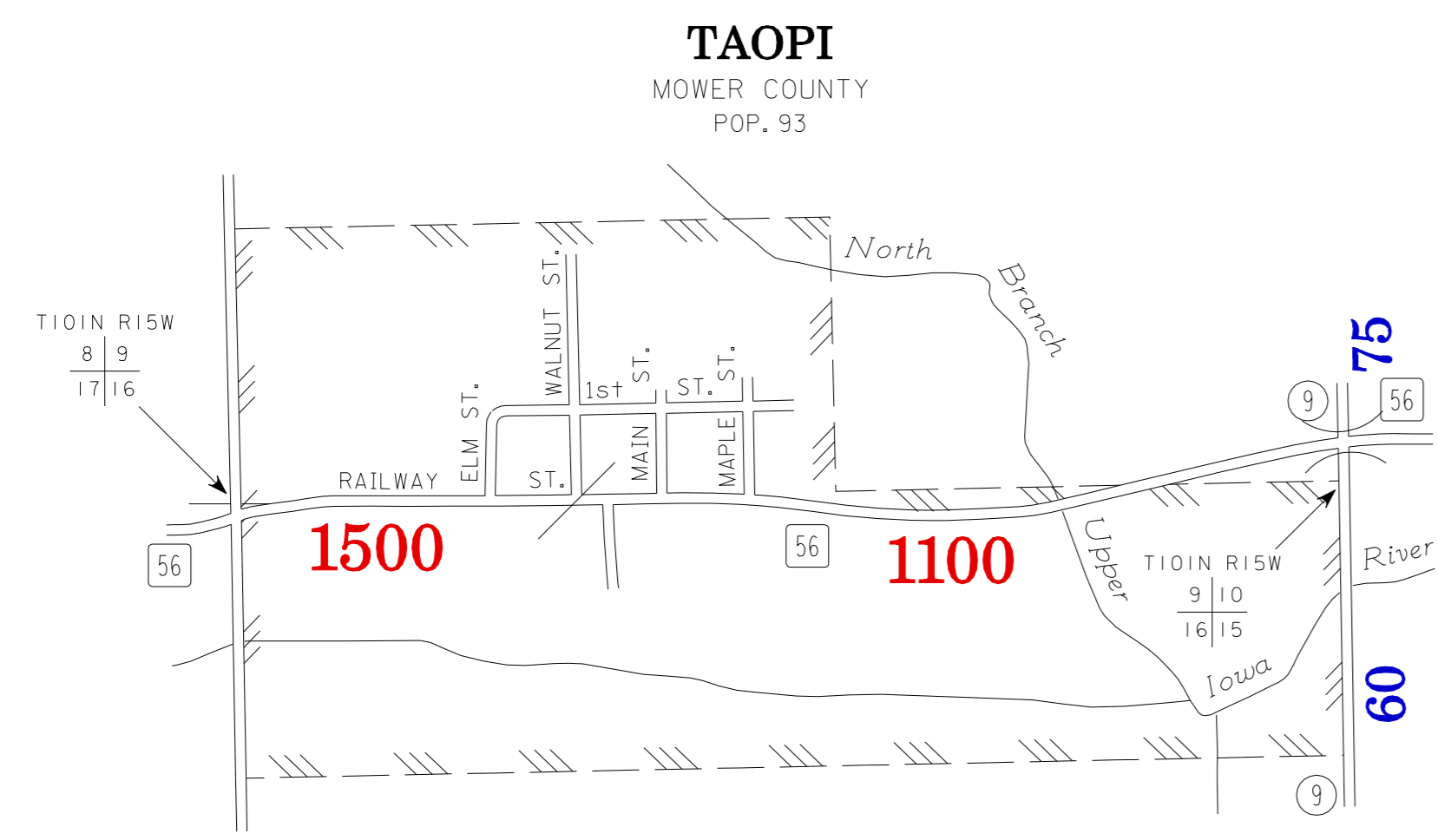
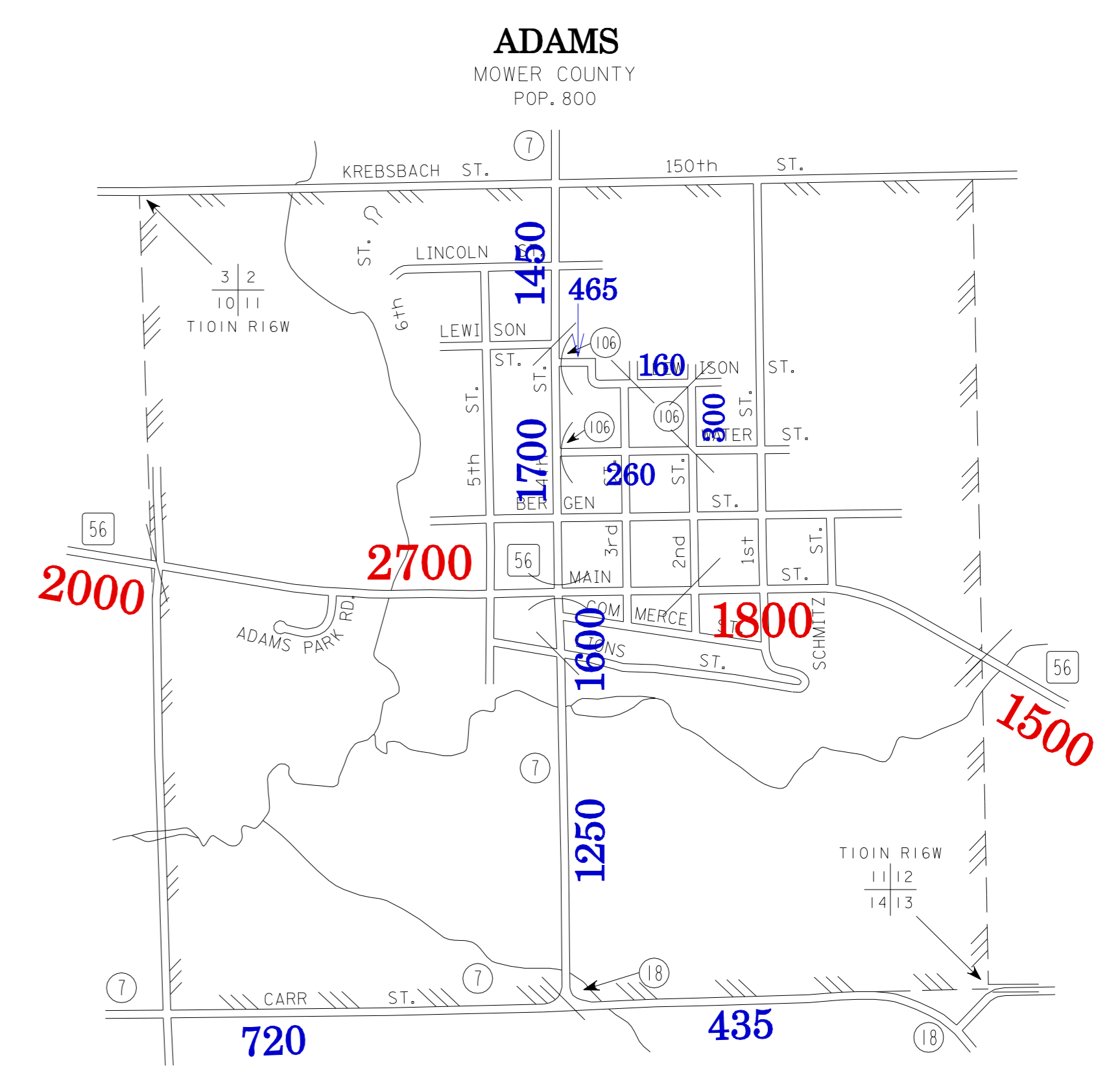
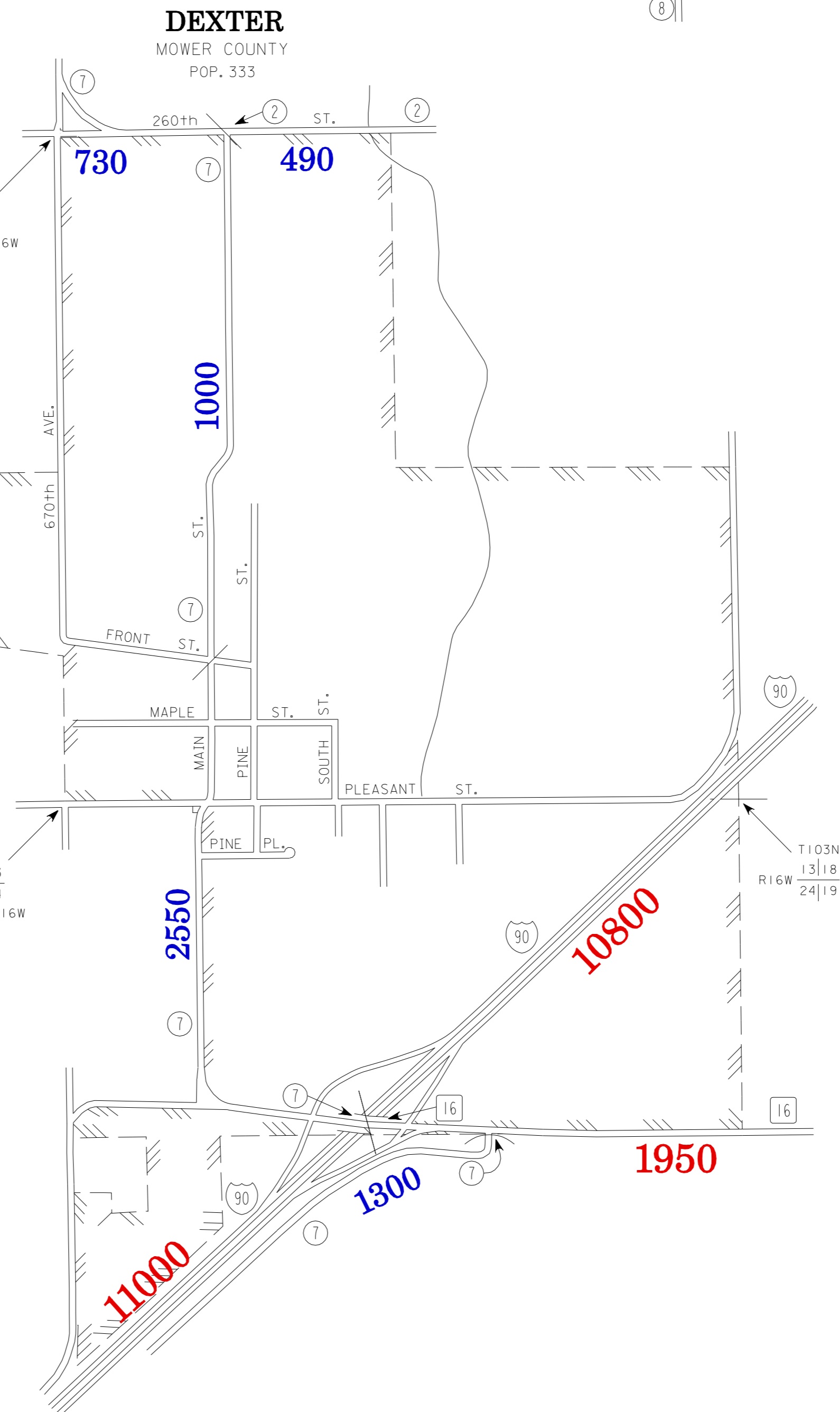
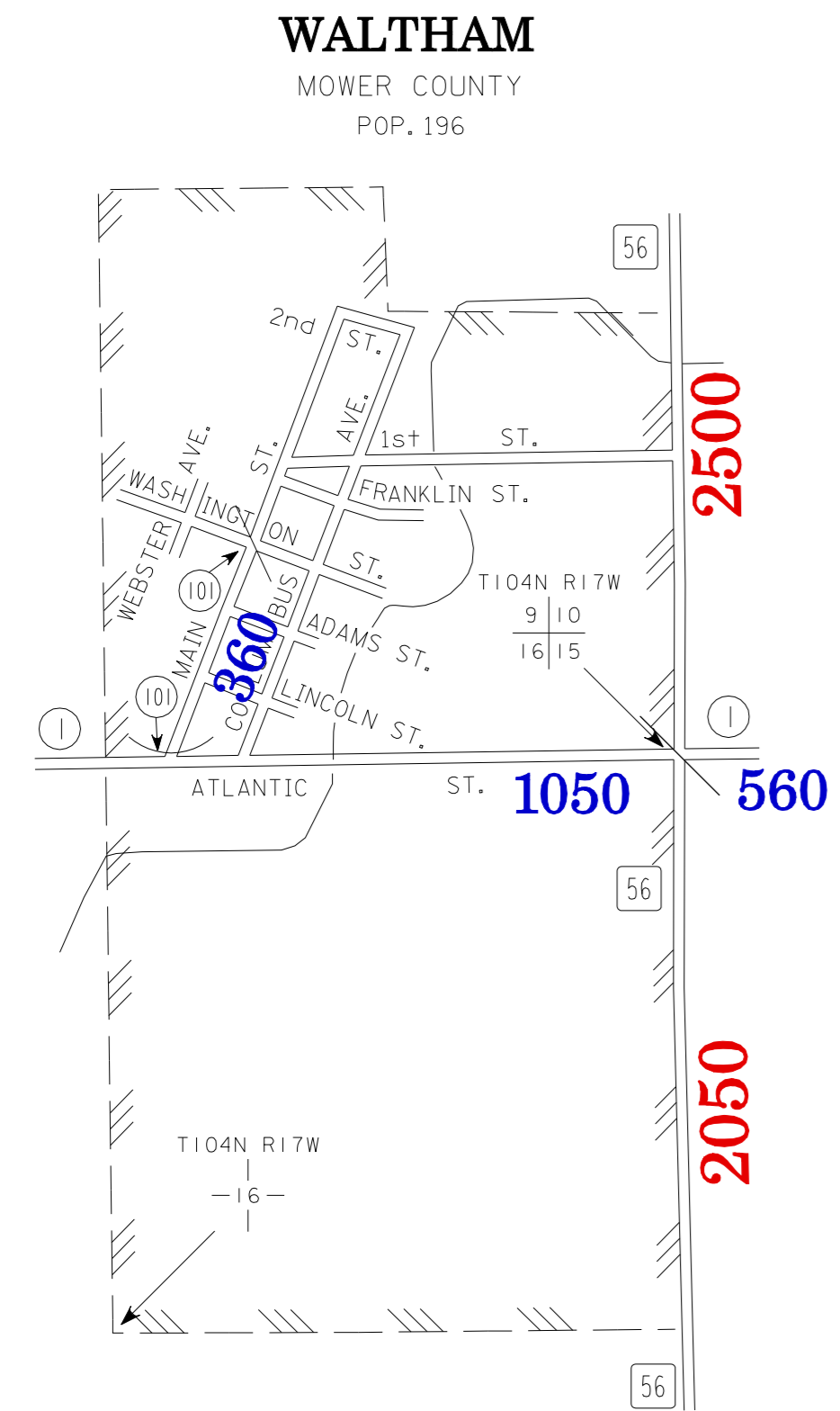
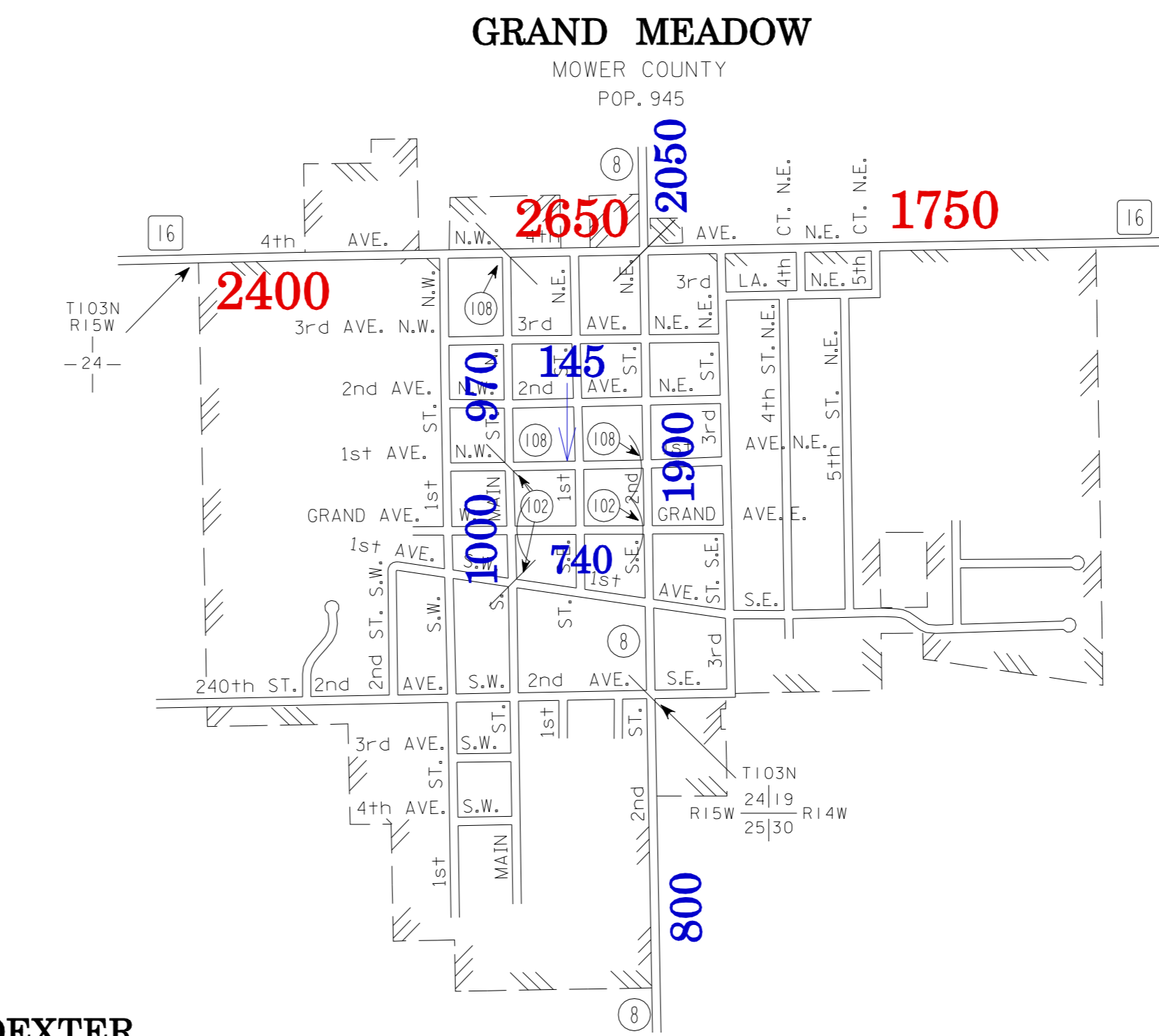
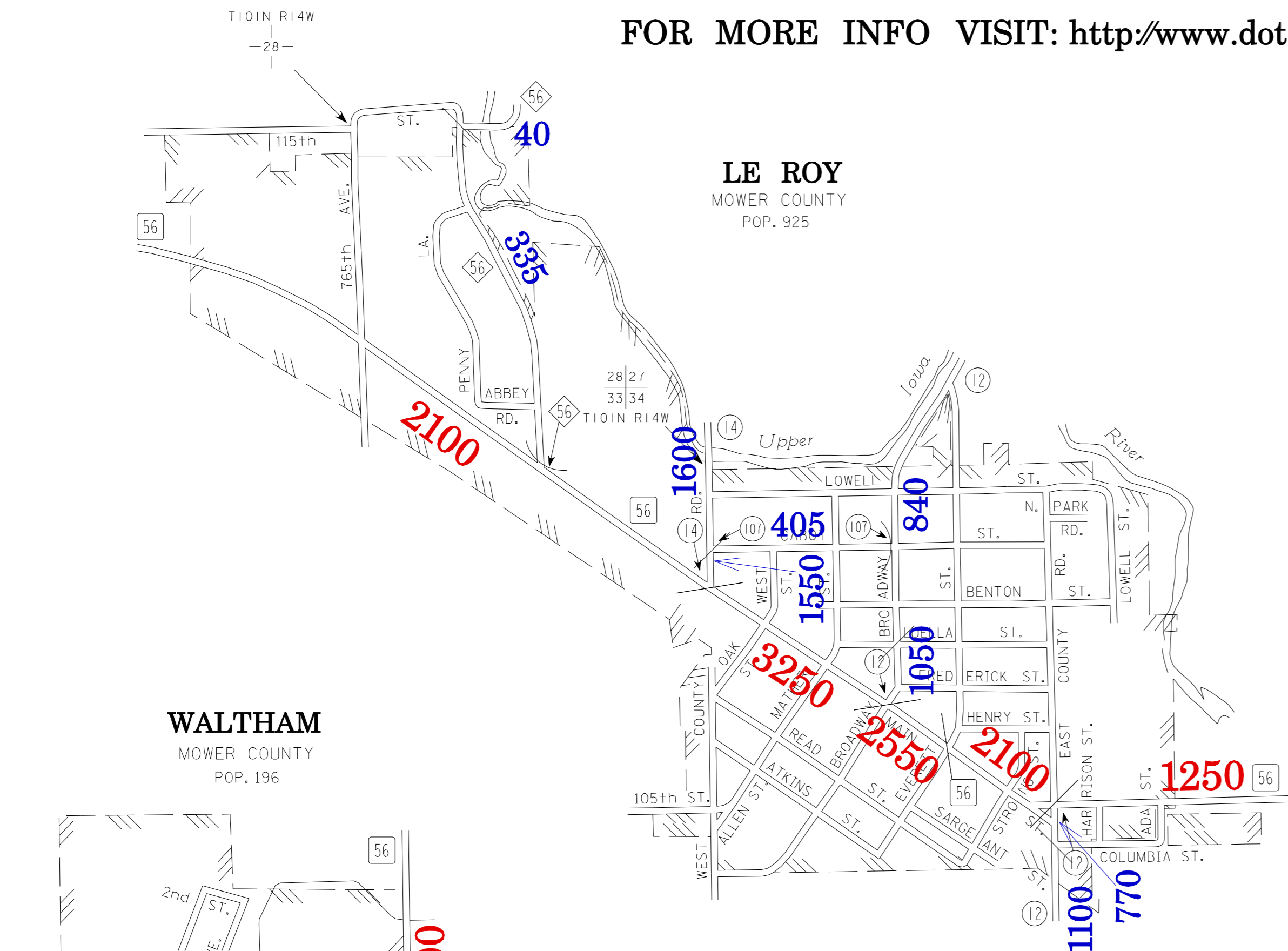


2008
BASIC DATA - 1977



LEGEND

- INTERSTATE TRUNK HIGHWAY..... (I-95)
- U. S. TRUNK HIGHWAY..... (16)
- STATE TRUNK HIGHWAY..... (55)
- COUNTY STATE AID HIGHWAY..... (23)
- COUNTY ROAD..... (56)
- PUBLIC ROAD.....
- PRIVATE ROAD.....
- CORPORATE LIMITS.....



VOLUMES PREPARED BY
THE OFFICE OF
TRANSPORTATION DATA & ANALYSIS

NUMERALS INDICATE AVERAGE DAILY
TRAFFIC VOLUMES ON DESIGNATED ROADS.

TRUNK HIGHWAY ROUTES ARE 2008 A.A.D.T. VOLUMES

COUNTY SYSTEM ROADS ARE 2008 A.A.D.T. VOLUMES

FOR DESIGNATED ROADS :
/ = SEGMENT ENDPOINT FOR ALL
ROADS INTERSECTED BY HATCH
(= SEGMENT ENDPOINT ONLY FOR
ROAD SEPARATED FROM INTERSECTING
ROAD BY ARC

MUNICIPALITIES SHOWN
ON THIS SHEET
ADAMS
DEXTER
GRAND MEADOW
LE ROY
TAOPI
WALTHAM

NOTE: 2000 U.S. CENSUS FIGURES SHOWN FOR ALL MUNICIPALITIES UNLESS OTHERWISE STATED.