

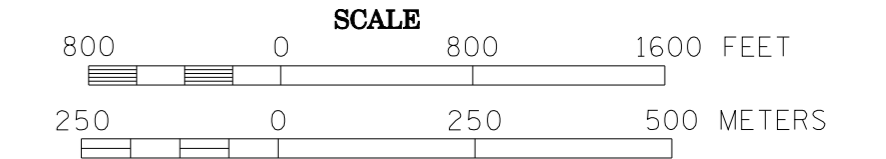
VOLUMES PREPARED BY
THE OFFICE OF
TRANSPORTATION DATA & ANALYSIS

NUMERALS INDICATE AVERAGE DAILY
TRAFFIC VOLUMES ON DESIGNATED ROADS.

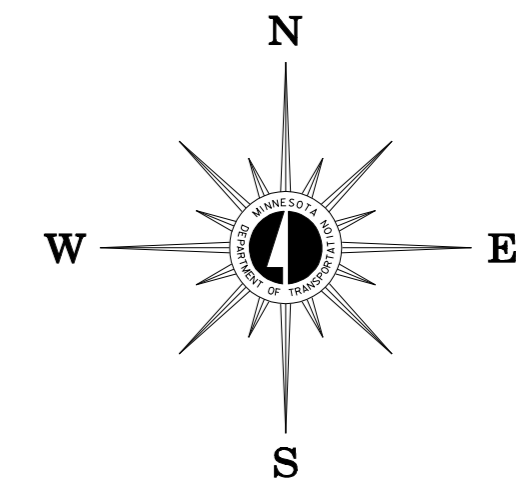
TRUNK HIGHWAY ROUTES ARE 2008 A.A.D.T. VOLUMES
COUNTY SYSTEM ROADS ARE 2008 A.A.D.T. VOLUMES

FOR DESIGNATED ROADS :
/ = SEGMENT ENDPOINT FOR ALL
ROADS INTERSECTED BY HATCH
(= SEGMENT ENDPOINT ONLY FOR
ROAD SEPARATED FROM INTERSECTING
ROAD BY ARC

2008 TRAFFIC VOLUMES
MUNICIPALITIES OF
MAHNOMEN CO.
PREPARED BY THE
MINNESOTA DEPARTMENT OF TRANSPORTATION
OFFICE OF TRANSPORTATION DATA & ANALYSIS
IN COOPERATION WITH
U.S. DEPARTMENT OF TRANSPORTATION
FEDERAL HIGHWAY ADMINISTRATION

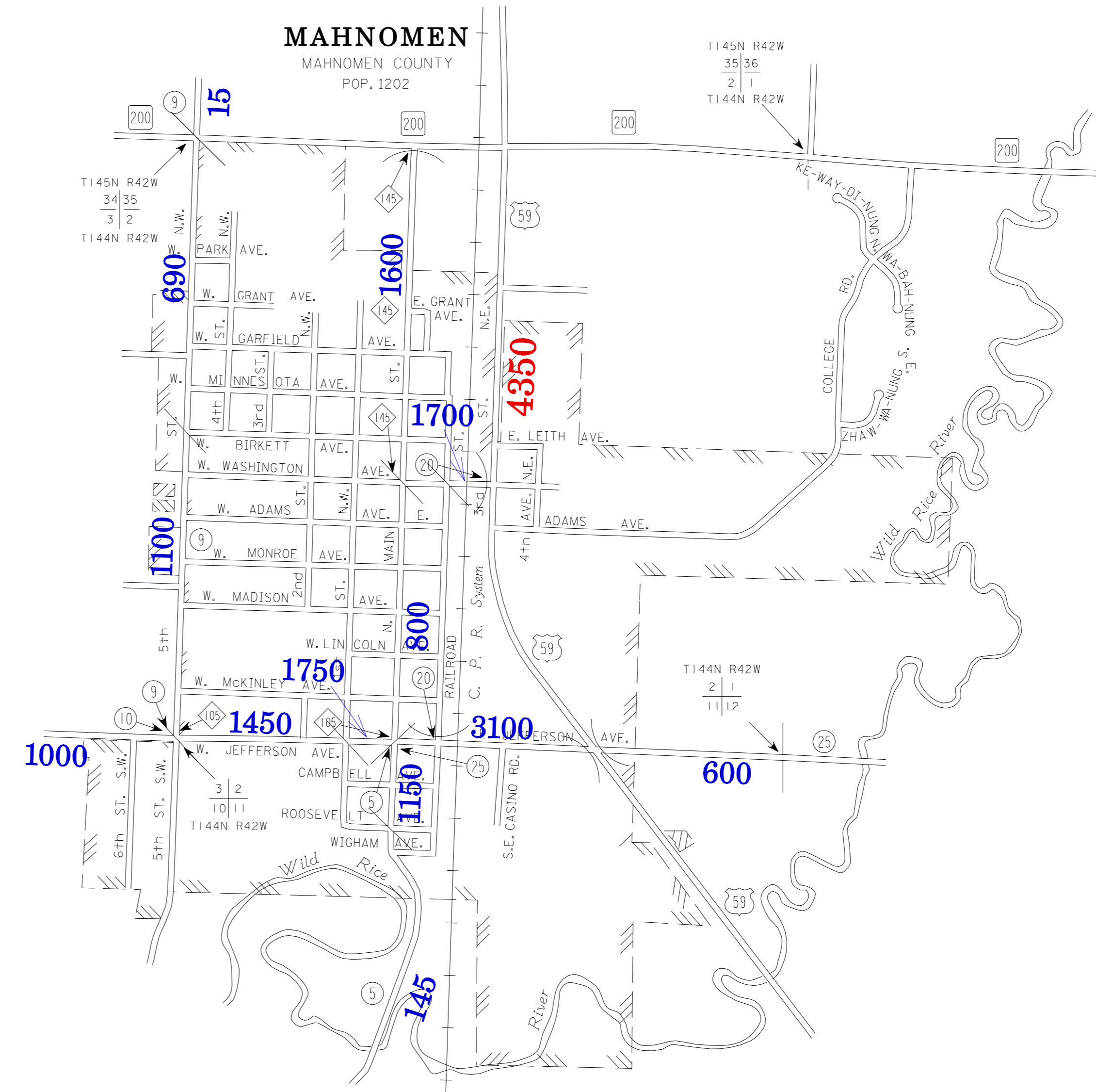
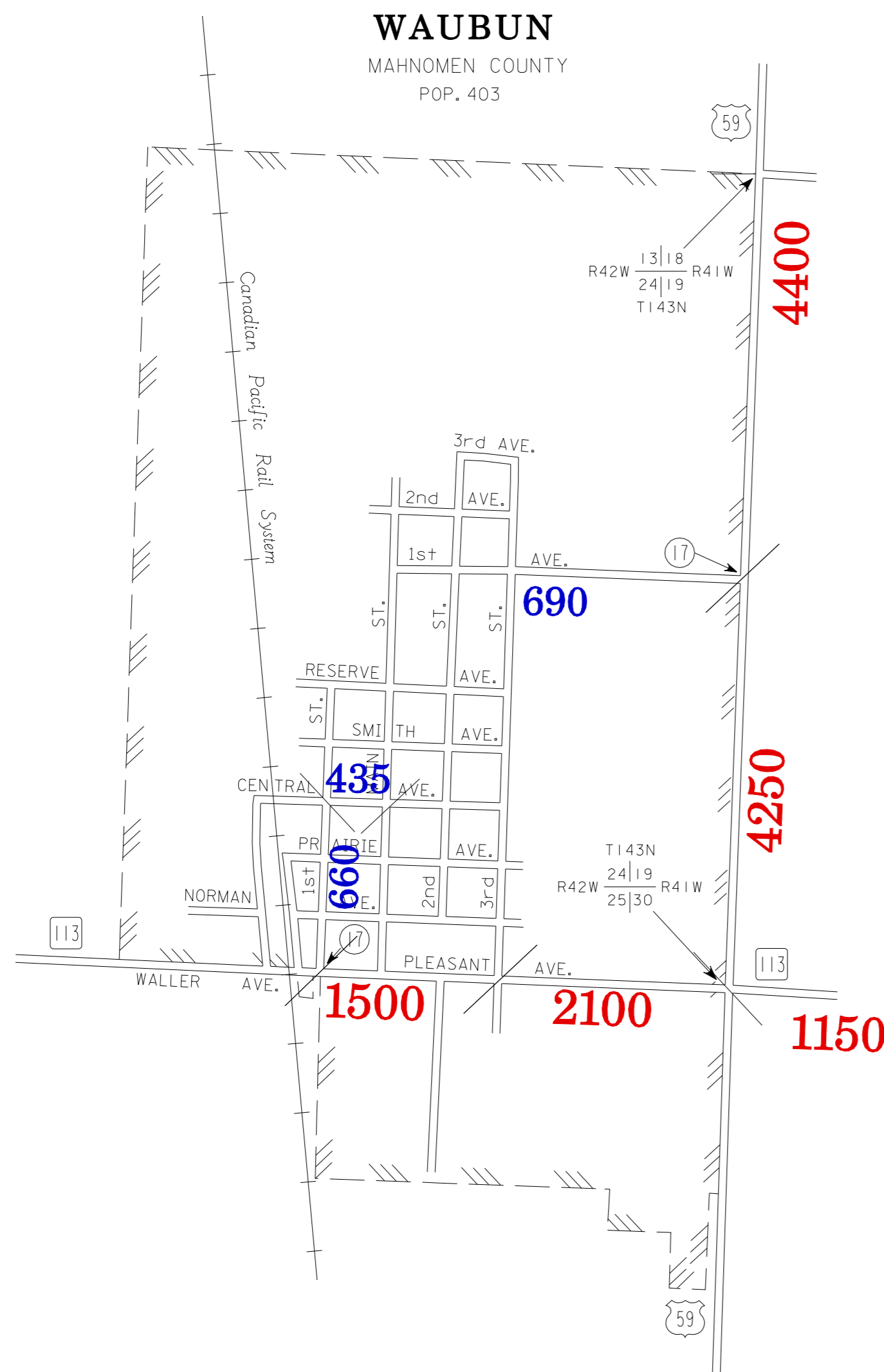
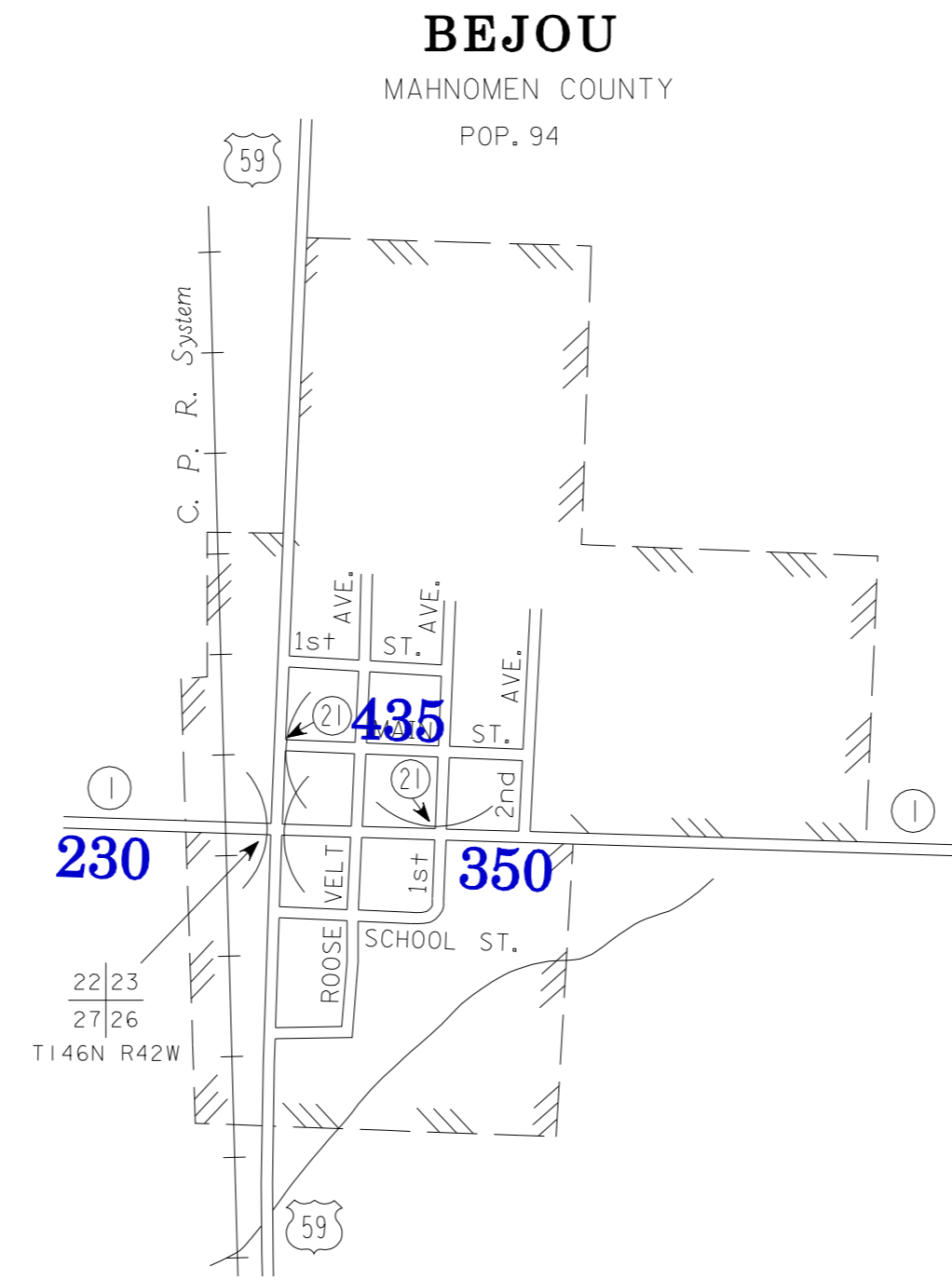


2008
BASIC DATA - 1977



LEGEND

- INTERSTATE TRUNK HIGHWAY..... (5)
- U.S. TRUNK HIGHWAY..... (10)
- STATE TRUNK HIGHWAY..... (55)
- COUNTY STATE AID HIGHWAY..... (25)
- COUNTY ROAD..... (13)
- PUBLIC ROAD..... (17)
- PRIVATE ROAD..... (11)
- CORPORATE LIMITS..... (---)



TRAFFIC VOLUMES ARE SUBJECT TO VARIABILITY AND CONSTRUCTION EFFECTS

FOR MORE INFO VISIT: <http://www.dot.state.mn.us/traffic/data/html/aadt.html>

MUNICIPALITIES SHOWN
ON THIS SHEET

BEJOU
MAHNOMEN
WAUBUN

NOTE: 2000 U.S. CENSUS FIGURES SHOWN FOR ALL MUNICIPALITIES UNLESS OTHERWISE STATED.