

VOLUMES PREPARED BY  
THE OFFICE OF  
TRANSPORTATION DATA & ANALYSIS

NUMERALS INDICATE AVERAGE DAILY  
TRAFFIC VOLUMES ON DESIGNATED ROADS.

TRUNK HIGHWAY ROUTES ARE 2008 A.A.D.T. VOLUMES  
COUNTY SYSTEM ROADS ARE 2008 A.A.D.T. VOLUMES

FOR DESIGNATED ROADS :  
/ = SEGMENT ENDPOINT FOR ALL  
ROADS INTERSECTED BY HATCH  
( = SEGMENT ENDPOINT ONLY FOR  
ROAD SEPARATED FROM INTERSECTING  
ROAD BY ARC

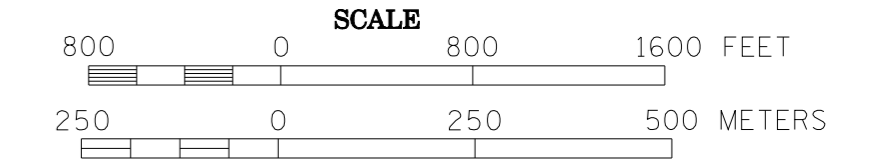
TRAFFIC VOLUMES ARE SUBJECT TO  
VARIABILITY AND CONSTRUCTION EFFECTS

FOR MORE INFO VISIT:  
<http://www.dot.state.mn.us/traffic/data/html/aadt.html>

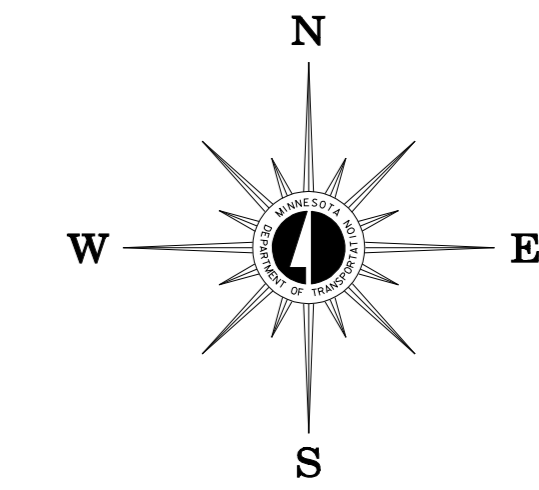
2008 TRAFFIC VOLUMES

MUNICIPALITIES OF  
**HUBBARD CO.**

PREPARED BY THE  
MINNESOTA DEPARTMENT OF TRANSPORTATION  
OFFICE OF TRANSPORTATION DATA & ANALYSIS  
IN COOPERATION WITH  
U.S. DEPARTMENT OF TRANSPORTATION  
FEDERAL HIGHWAY ADMINISTRATION

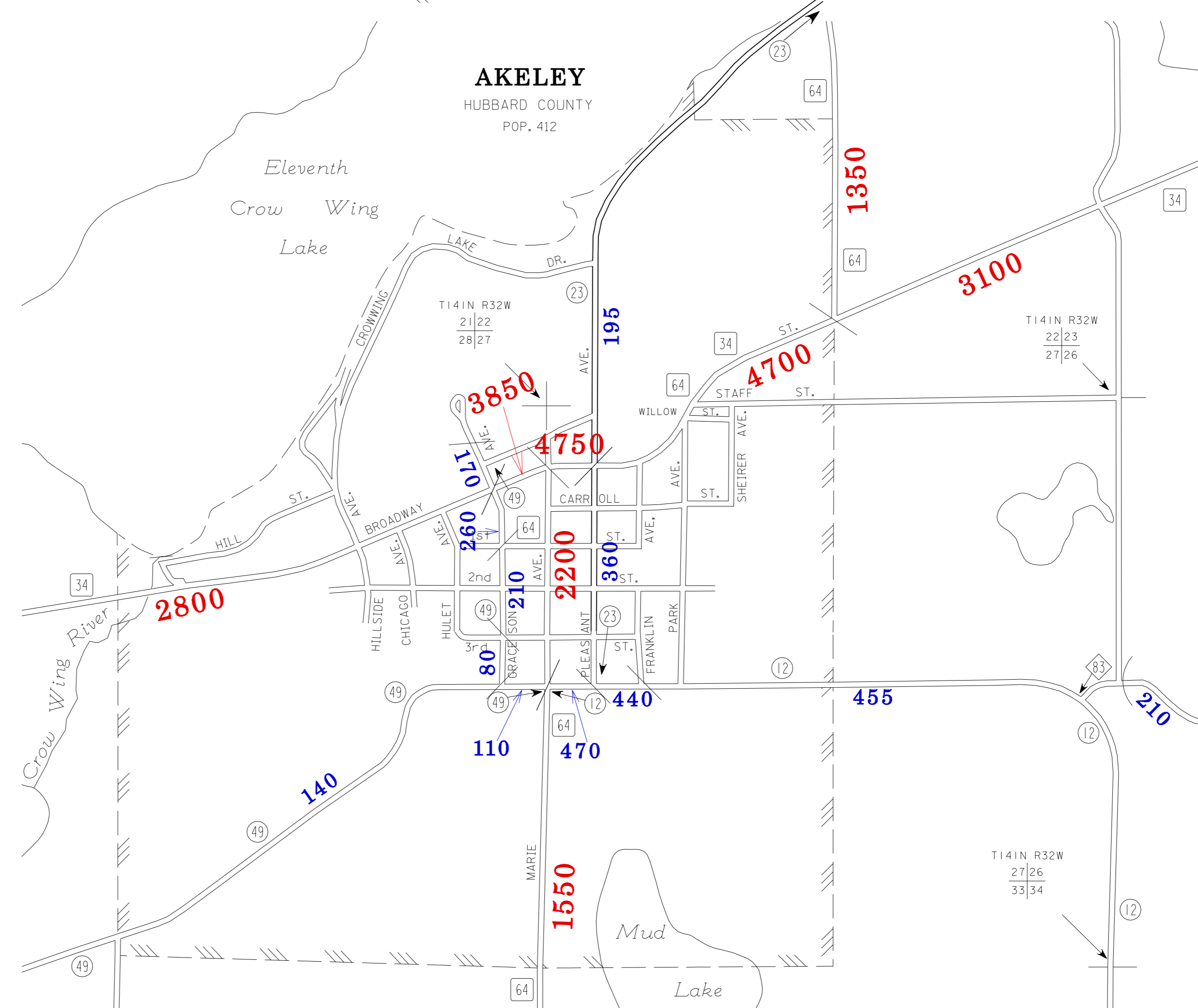
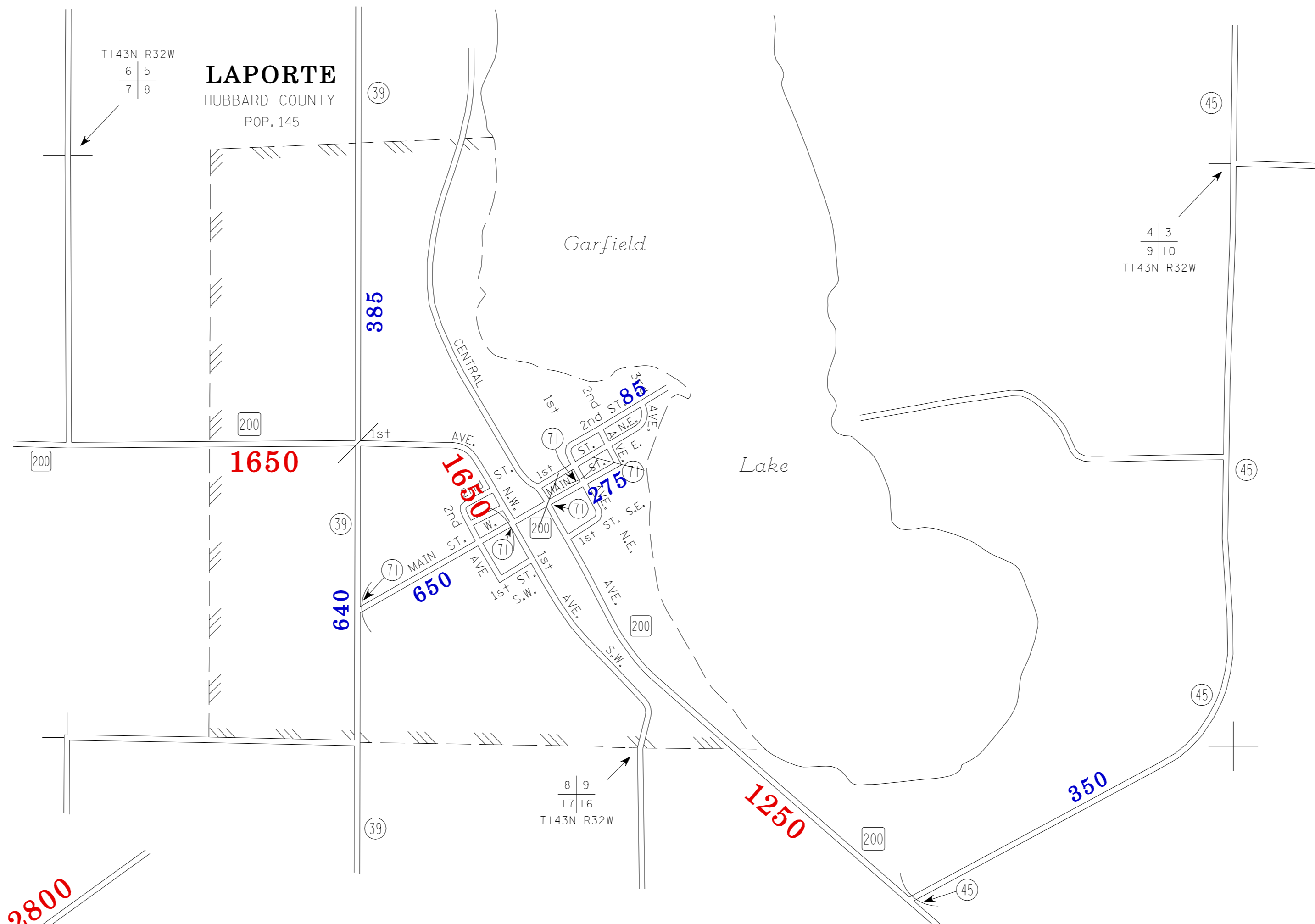
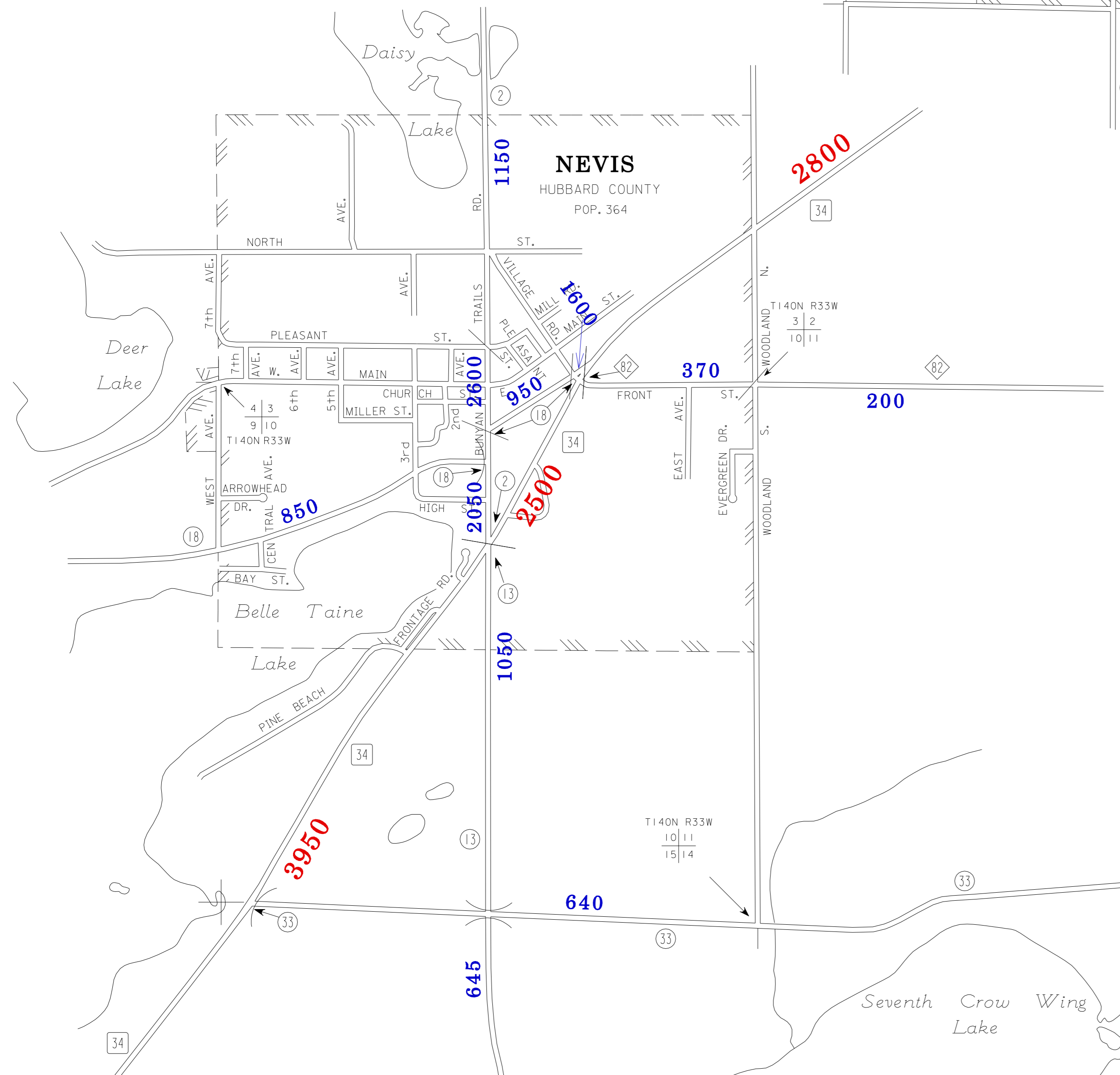


2008  
BASIC DATA - 1990



LEGEND

- INTERSTATE TRUNK HIGHWAY..... (I-95)
- U. S. TRUNK HIGHWAY..... (10)
- STATE TRUNK HIGHWAY..... (55)
- COUNTY STATE AID HIGHWAY..... (23)
- COUNTY ROAD..... (18)
- PUBLIC ROAD..... (12)
- PRIVATE ROAD..... (11)
- CORPORATE LIMITS..... (---)



MUNICIPALITIES SHOWN  
ON THIS SHEET  
NEVIS  
AKELEY  
LAPORTE

NOTE: 2000 U.S. CENSUS FIGURES SHOWN FOR ALL MUNICIPALITIES UNLESS OTHERWISE STATED.