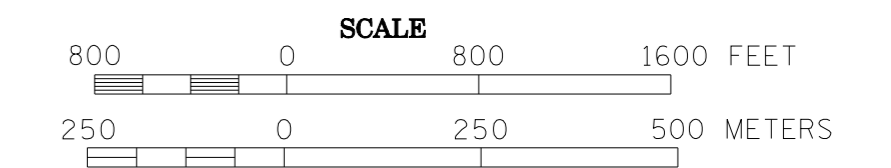


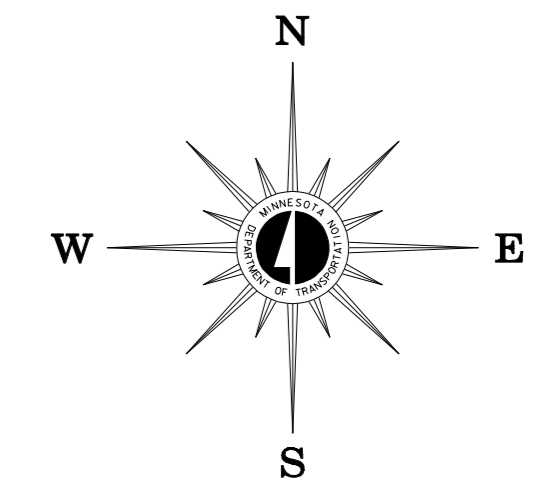
2008 TRAFFIC VOLUMES

MUNICIPALITIES OF
BECKER COUNTY

PREPARED BY THE
MINNESOTA DEPARTMENT OF TRANSPORTATION
OFFICE OF TRANSPORTATION DATA & ANALYSIS
IN COOPERATION WITH
U.S. DEPARTMENT OF TRANSPORTATION
FEDERAL HIGHWAY ADMINISTRATION



2008
BASIC DATA - 1977



LEGEND

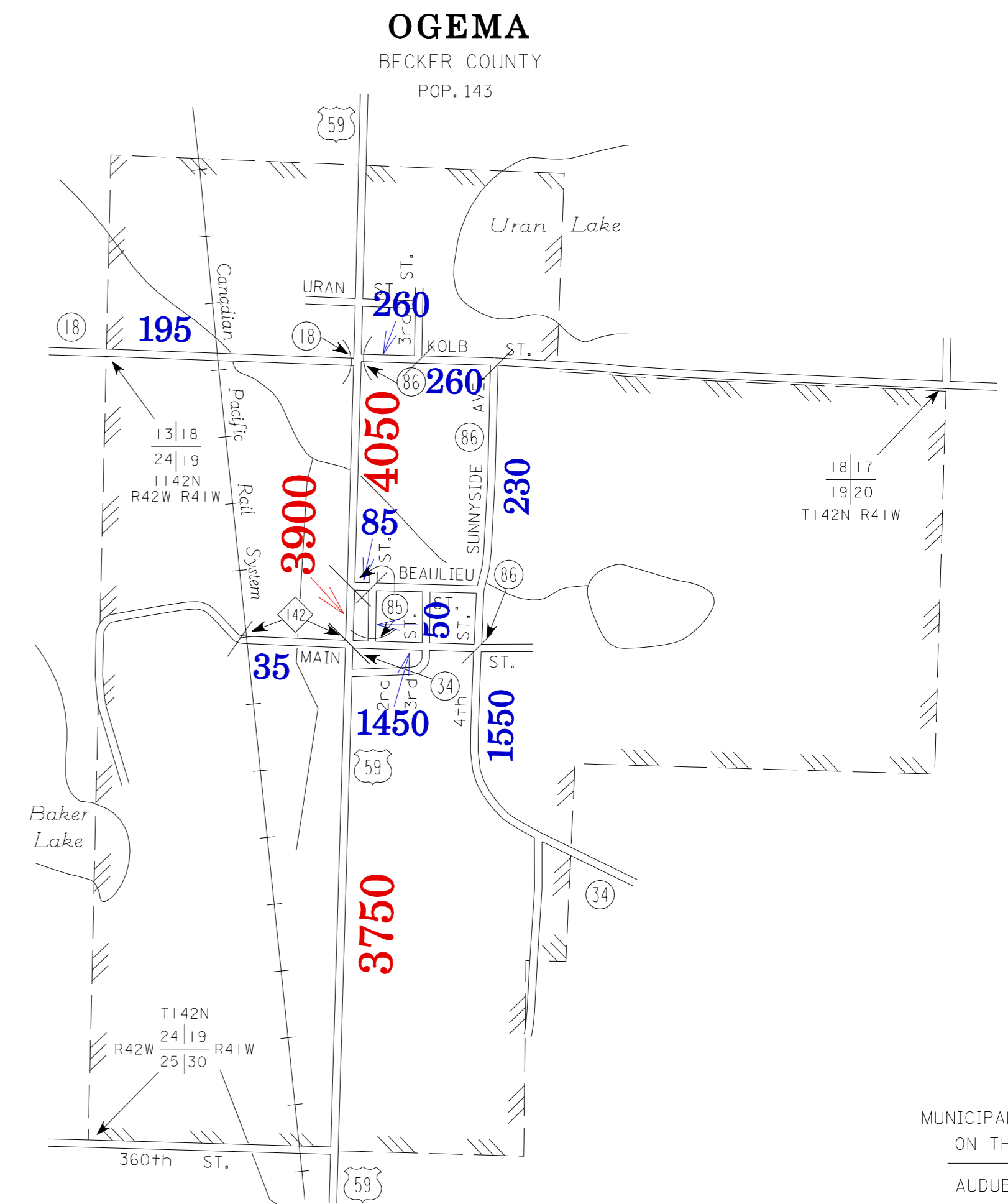
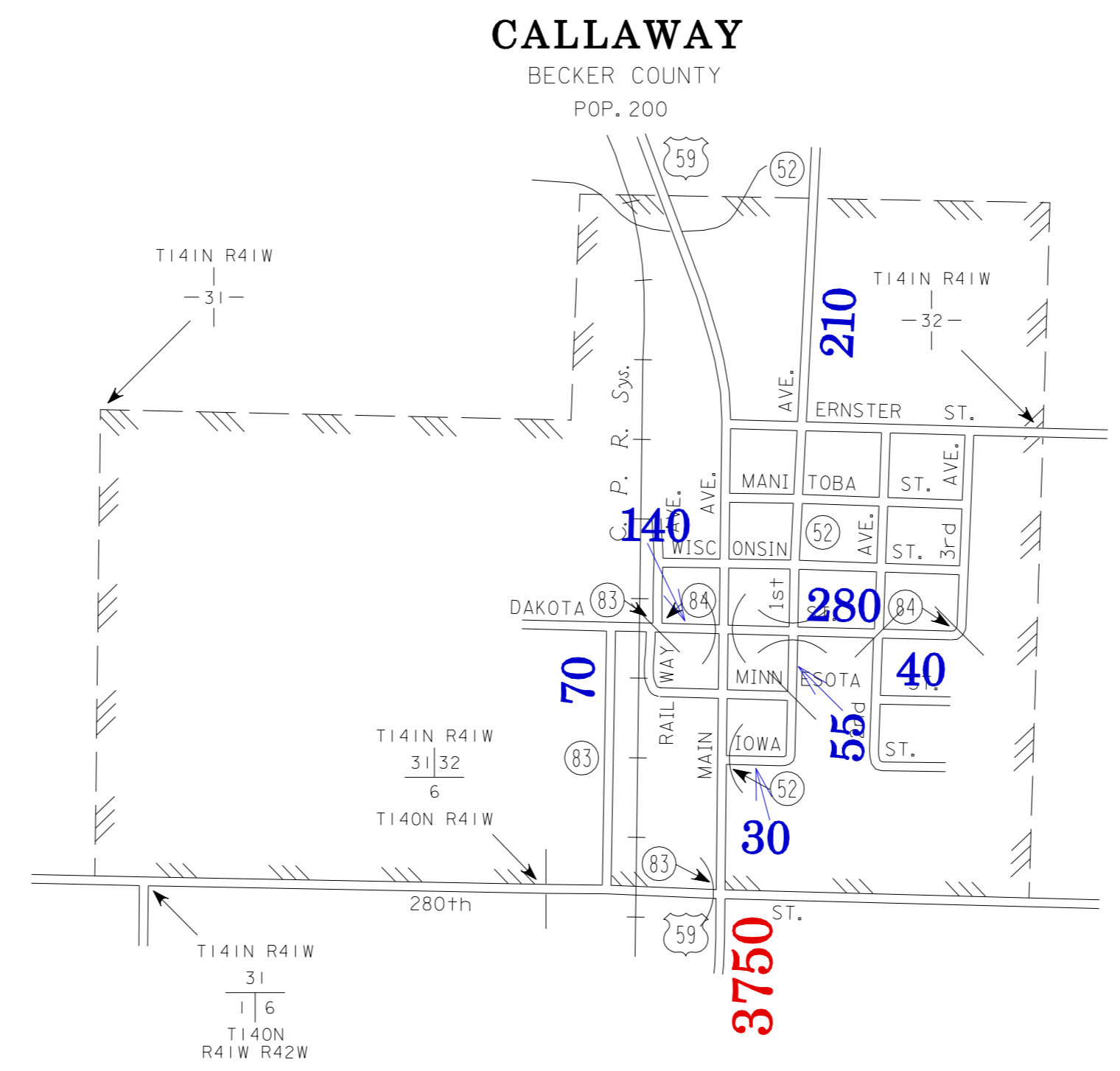
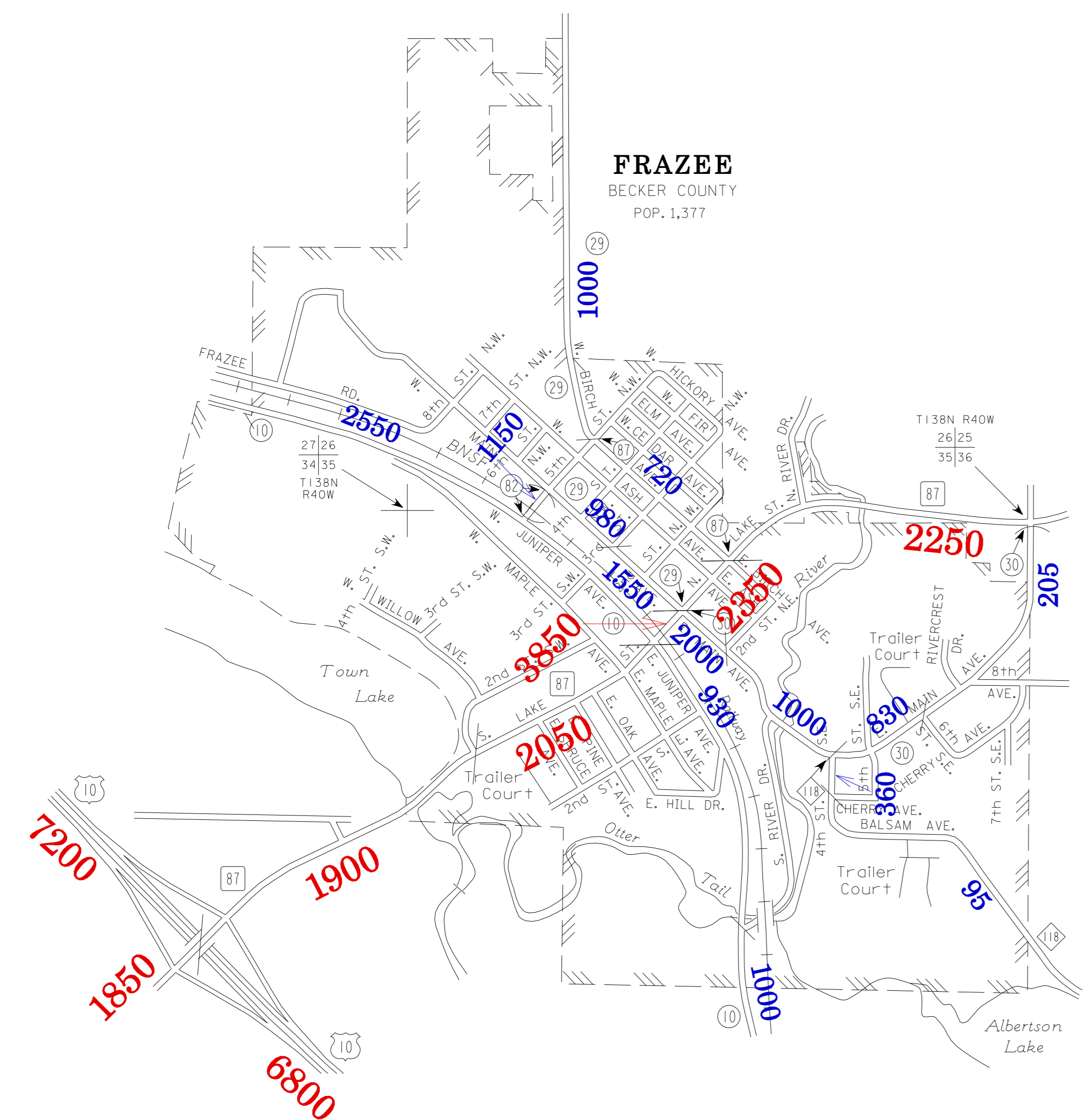
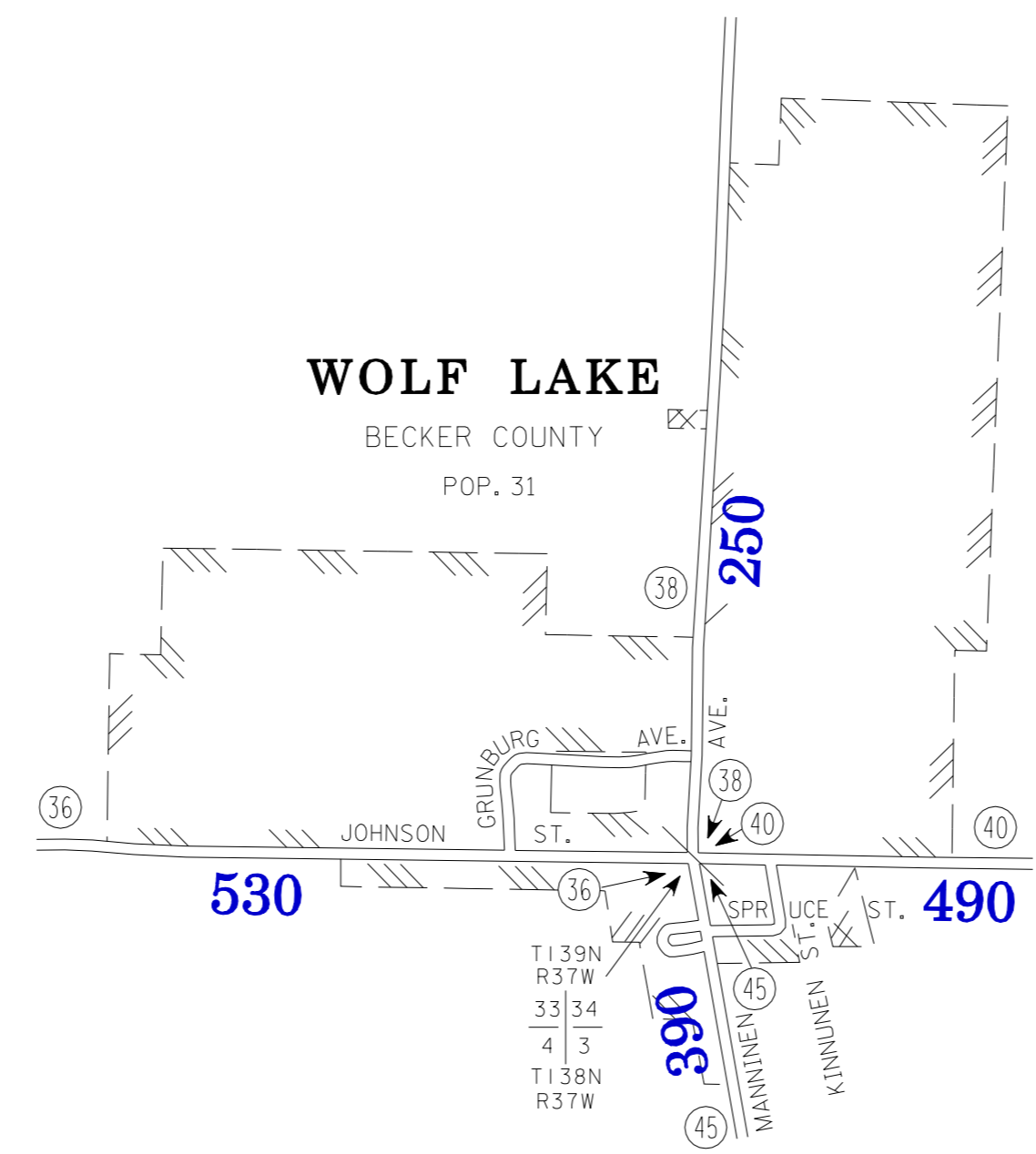
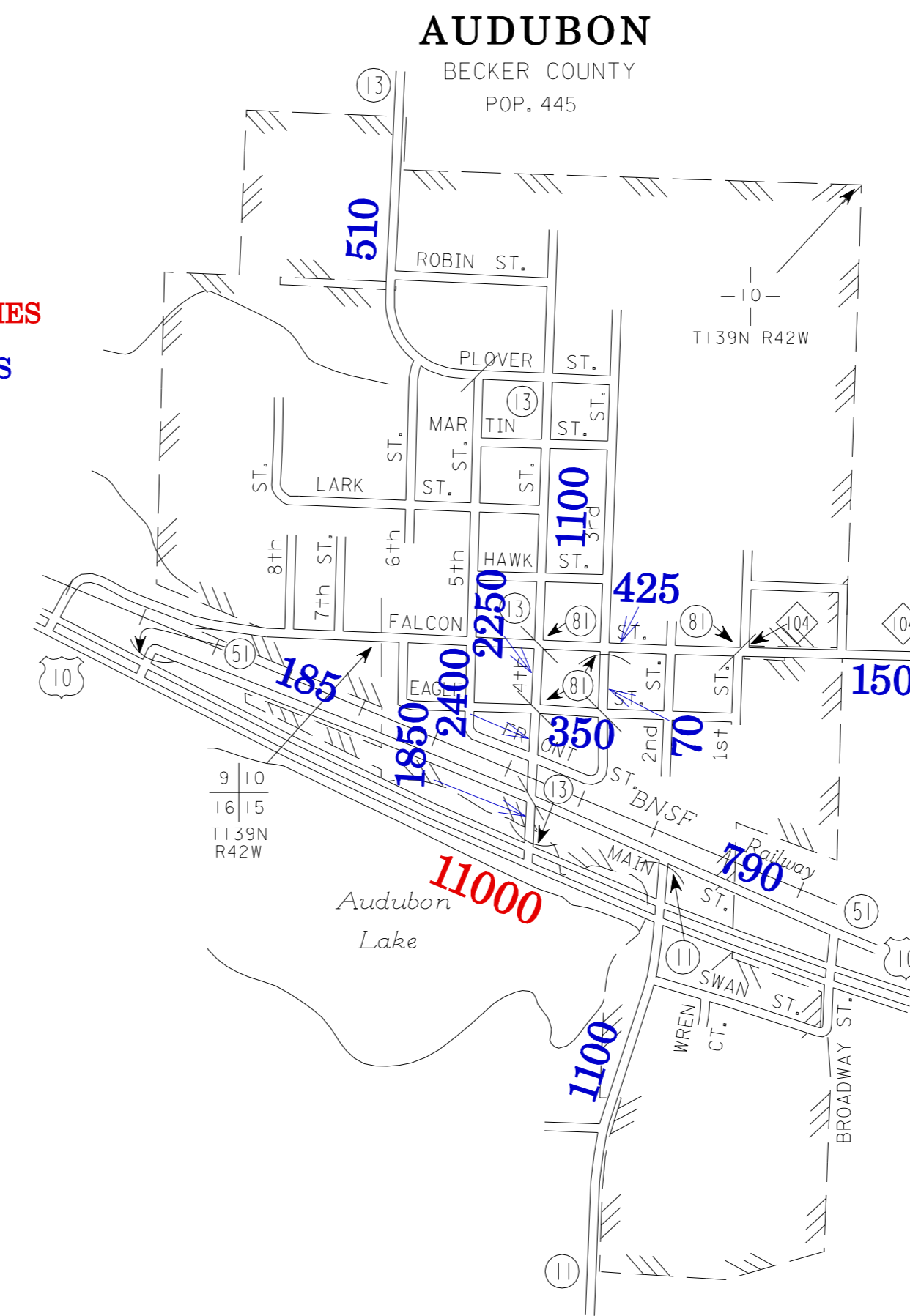
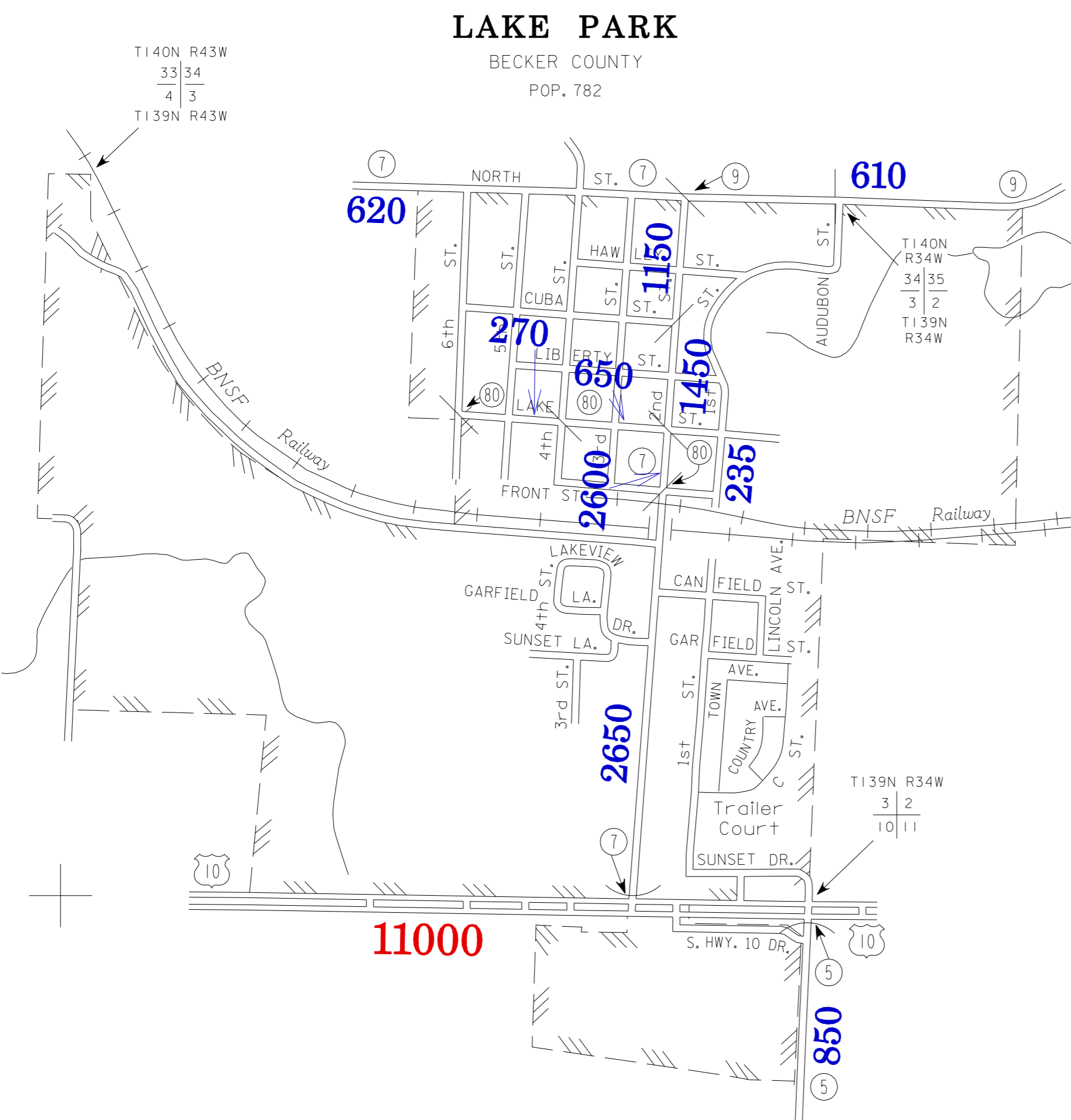
- INTERSTATE TRUNK HIGHWAY.....(I-35)
- U.S. TRUNK HIGHWAY.....(10)
- STATE TRUNK HIGHWAY.....(55)
- COUNTY STATE AID HIGHWAY.....(23)
- COUNTY ROAD.....(15)
- PUBLIC ROAD.....
- PRIVATE ROAD.....
- CORPORATE LIMITS.....

VOLUMES PREPARED BY
THE OFFICE OF
TRANSPORTATION DATA & ANALYSIS

NUMERALS INDICATE AVERAGE DAILY
TRAFFIC VOLUMES ON DESIGNATED ROADS.

TRUNK HIGHWAY ROUTES ARE 2008 A.A.D.T. VOLUMES
COUNTY SYSTEM ROADS ARE 2008 A.A.D.T. VOLUMES

FOR DESIGNATED ROADS :
/ = SEGMENT ENDPOINT FOR ALL
ROADS INTERSECTED BY HATCH
(= SEGMENT ENDPOINT ONLY FOR
ROAD SEPARATED FROM INTERSECTING
ROAD BY ARC



TRAFFIC VOLUMES ARE SUBJECT TO VARIABILITY AND CONSTRUCTION EFFECTS
FOR MORE INFO VISIT: <http://www.dot.state.mn.us/traffic/data/html/aadt.html>

NOTE: 2000 U.S. CENSUS FIGURES SHOWN FOR ALL MUNICIPALITIES UNLESS OTHERWISE STATED.

- MUNICIPALITIES SHOWN
ON THIS SHEET
- AUDUBON
 - CALLAWAY
 - FRAZEE
 - LAKE PARK
 - OGEMA
 - WOLF LAKE