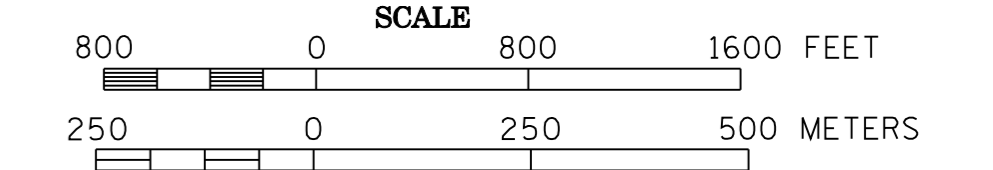


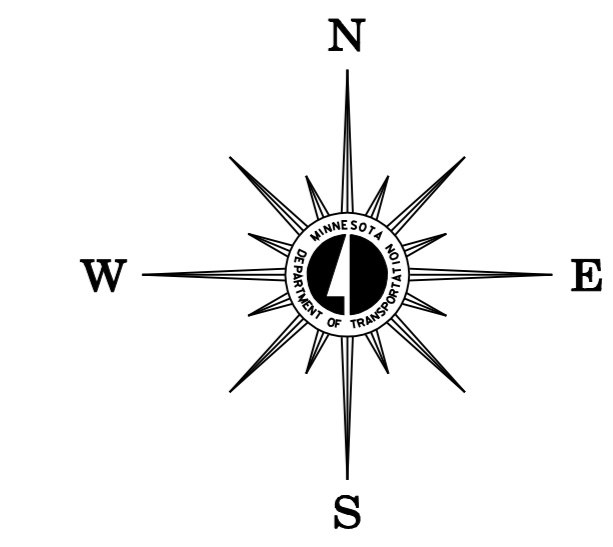
2007 TRAFFIC VOLUMES

MUNICIPALITIES OF
SAINT LOUIS CO.

PREPARED BY THE
MINNESOTA DEPARTMENT OF TRANSPORTATION
OFFICE OF TRANSPORTATION DATA & ANALYSIS
IN COOPERATION WITH
U.S. DEPARTMENT OF TRANSPORTATION
FEDERAL HIGHWAY ADMINISTRATION



2007
BASIC DATA - 1978



LEGEND

- INTERSTATE TRUNK HIGHWAY..... (35)
- U.S. TRUNK HIGHWAY..... (10)
- STATE TRUNK HIGHWAY..... (55)
- COUNTY STATE AID HIGHWAY..... (2)
- COUNTY ROAD..... (11)
- PUBLIC ROAD..... (15)
- PRIVATE ROAD..... (16)
- CORPORATE LIMITS..... (---)

VOLUMES PREPARED BY
THE OFFICE OF
TRANSPORTATION DATA & ANALYSIS

NUMERALS INDICATE AVERAGE DAILY
TRAFFIC VOLUMES ON DESIGNATED ROADS.

TRUNK HIGHWAY ROUTES ARE 2006 A.A.D.T. VOLUMES
COUNTY SYSTEM ROADS ARE 2007 A.A.D.T. VOLUMES

FOR DESIGNATED ROADS :
/ = SEGMENT ENDPOINT FOR ALL
ROADS INTERSECTED BY HATCH
(= SEGMENT ENDPOINT ONLY FOR
ROAD SEPARATED FROM INTERSECTING
ROAD BY ARC

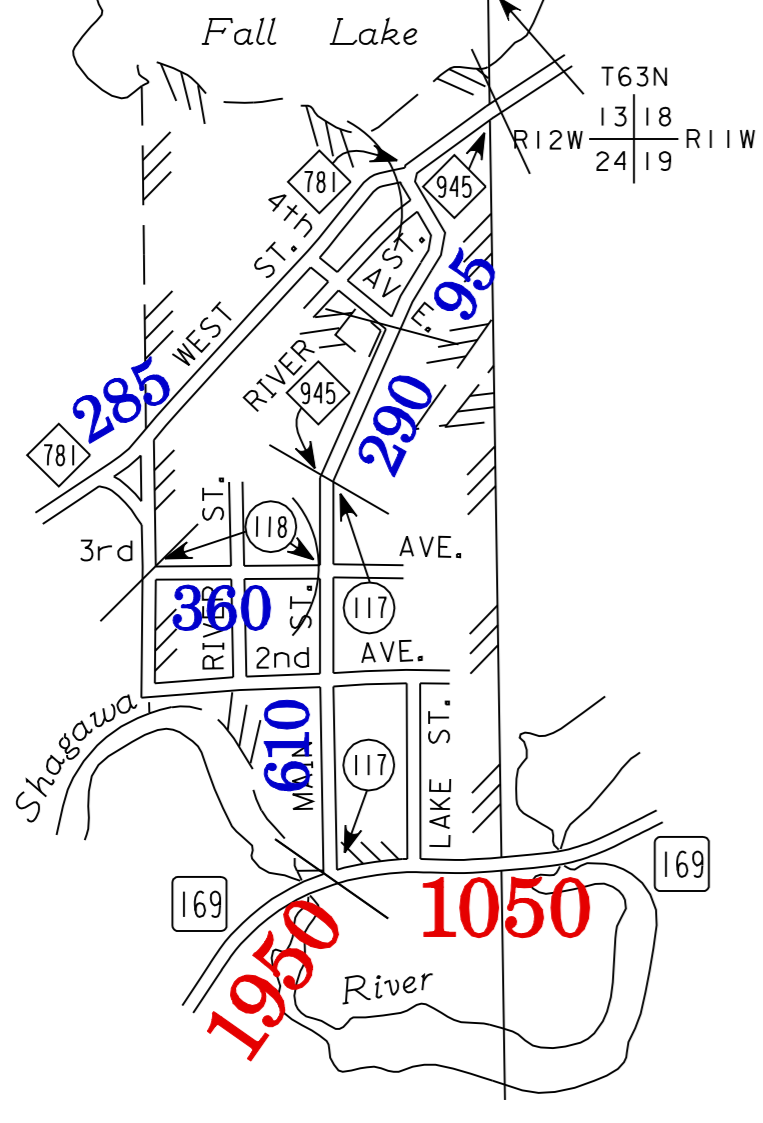
MUNICIPALITIES SHOWN
ON THIS SHEET
AURORA
MCKINLEY
MEADOWLANDS
WINTON

TRAFFIC VOLUMES ARE SUBJECT TO VARIABILITY AND CONSTRUCTION EFFECTS

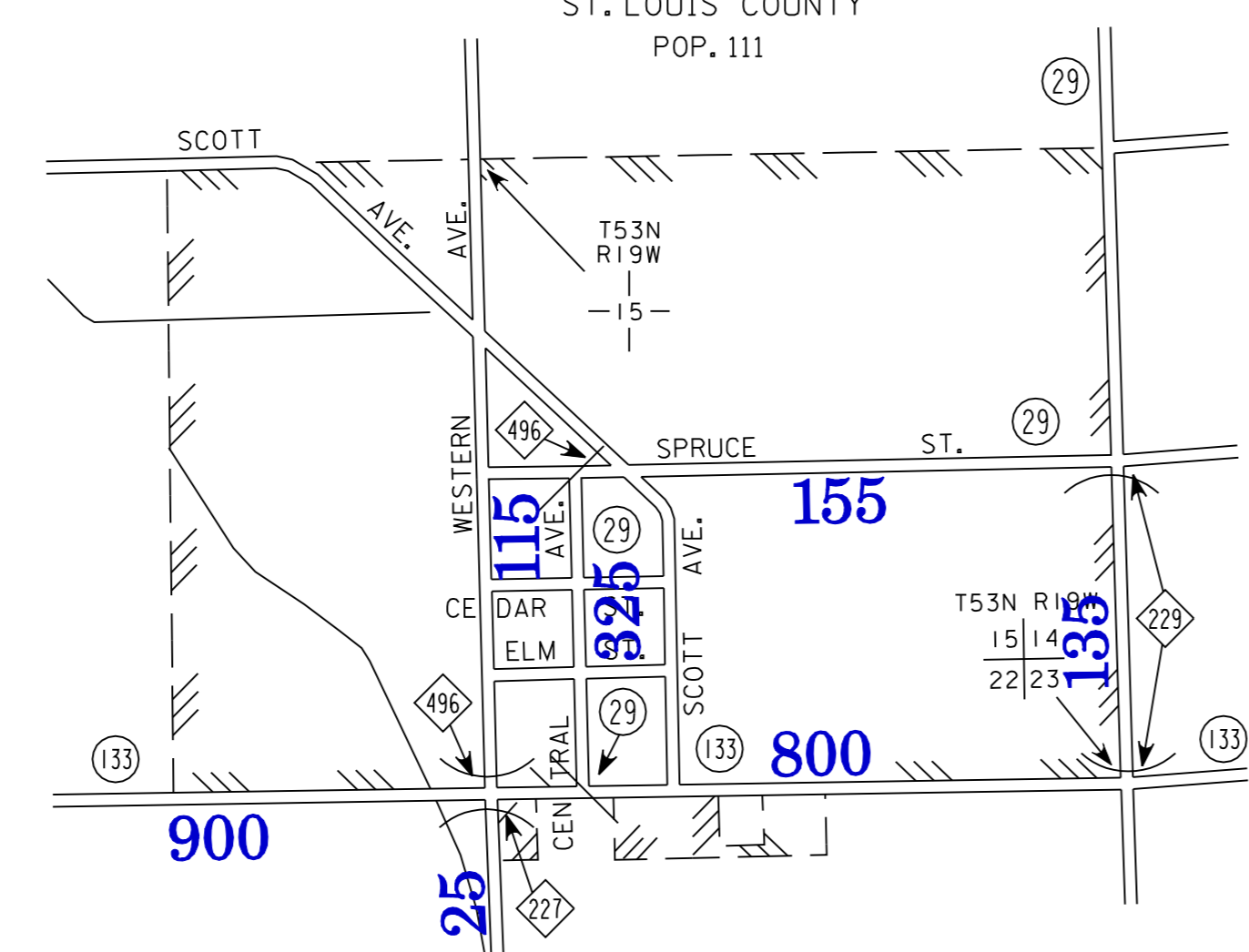
FOR MORE INFO VISIT: <http://www.dot.state.mn.us/traffic/data/html/aadt.html>

NOTE: 2000 U.S. CENSUS FIGURES SHOWN FOR ALL MUNICIPALITIES UNLESS OTHERWISE STATED.

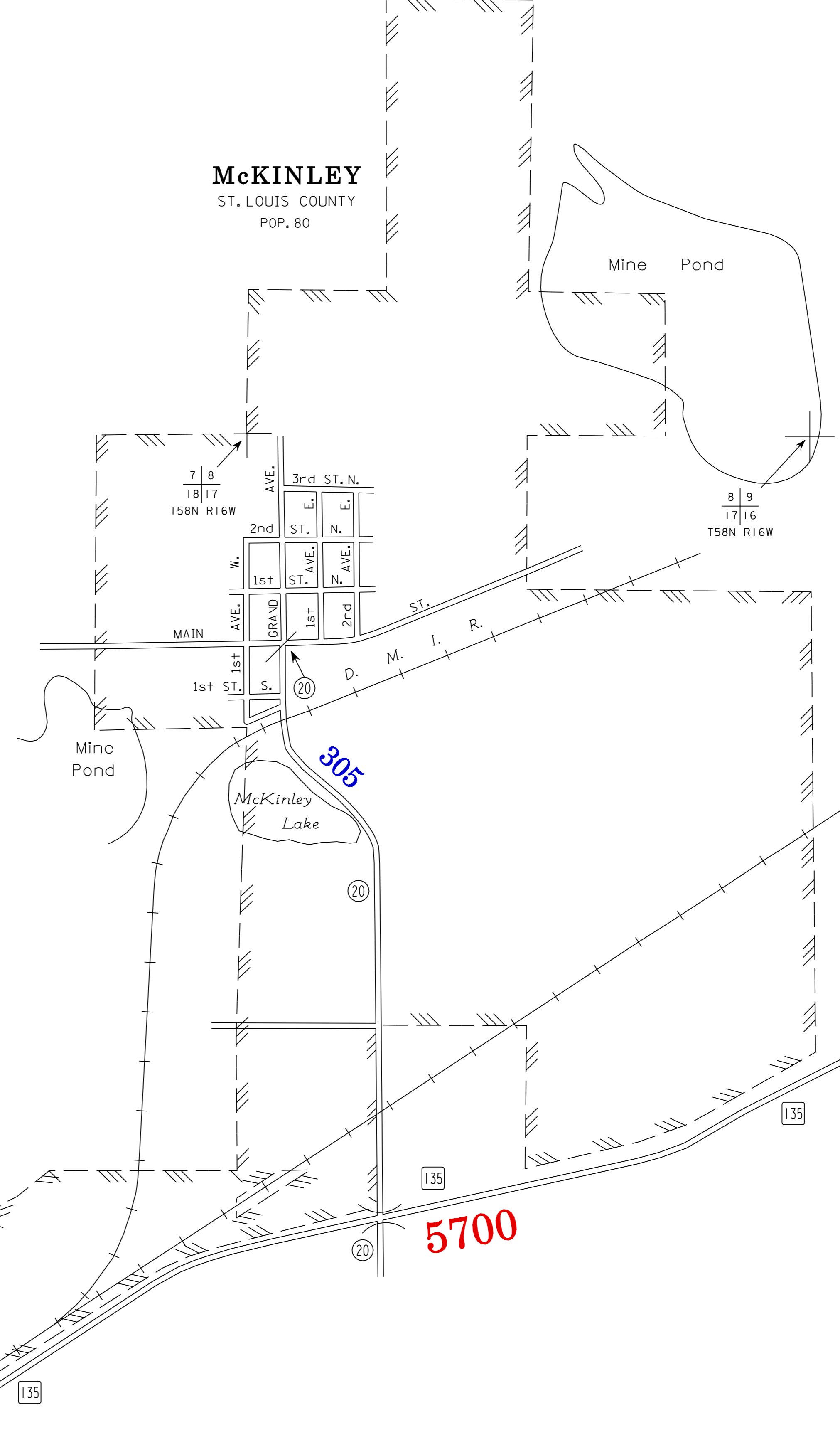
WINTON
ST. LOUIS COUNTY
POP. 185



MEADOWLANDS
ST. LOUIS COUNTY
POP. 111



MCKINLEY
ST. LOUIS COUNTY
POP. 80



AURORA
ST. LOUIS COUNTY
POP. 1,850

