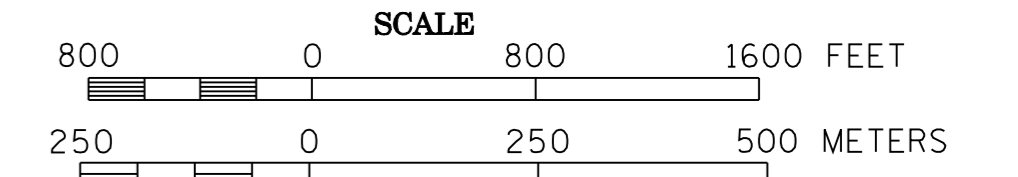


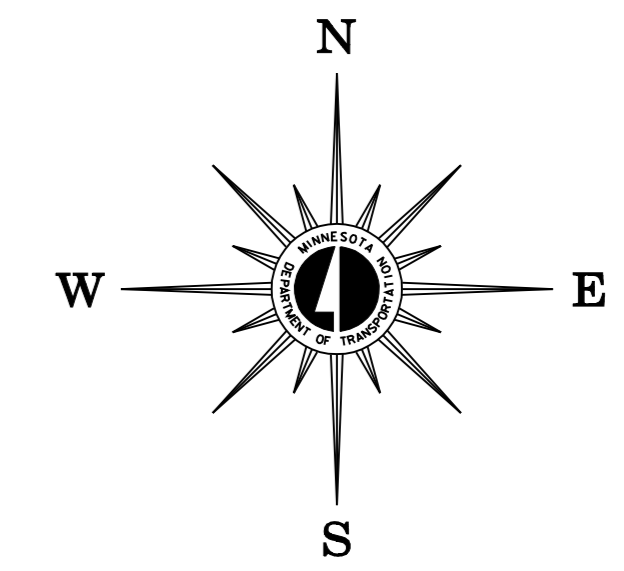
2007 TRAFFIC VOLUMES

MUNICIPALITIES OF  
**RENVILLE CO.**

PREPARED BY THE  
MINNESOTA DEPARTMENT OF TRANSPORTATION  
OFFICE OF TRANSPORTATION DATA & ANALYSIS  
IN COOPERATION WITH  
U.S. DEPARTMENT OF TRANSPORTATION  
FEDERAL HIGHWAY ADMINISTRATION

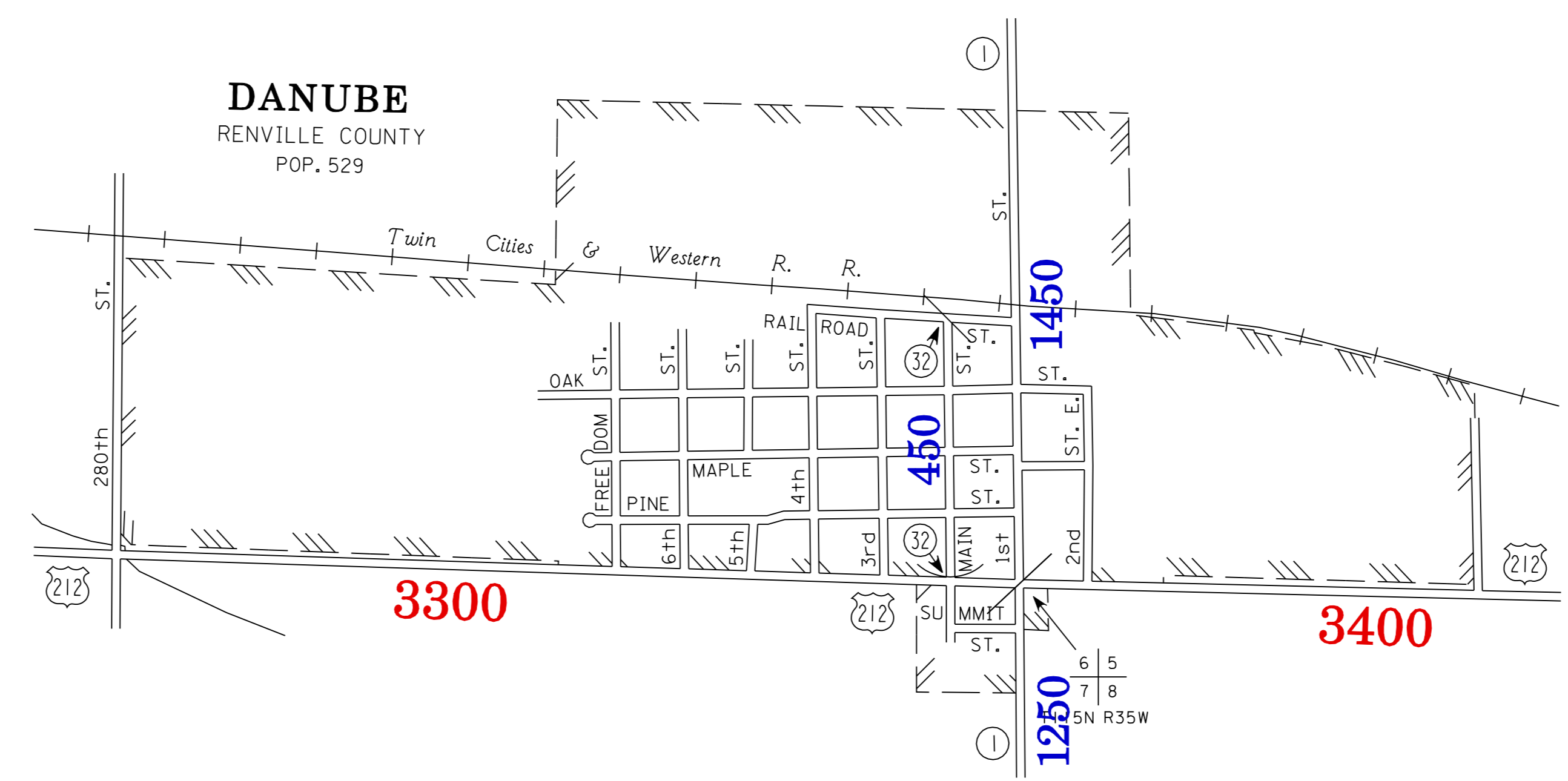
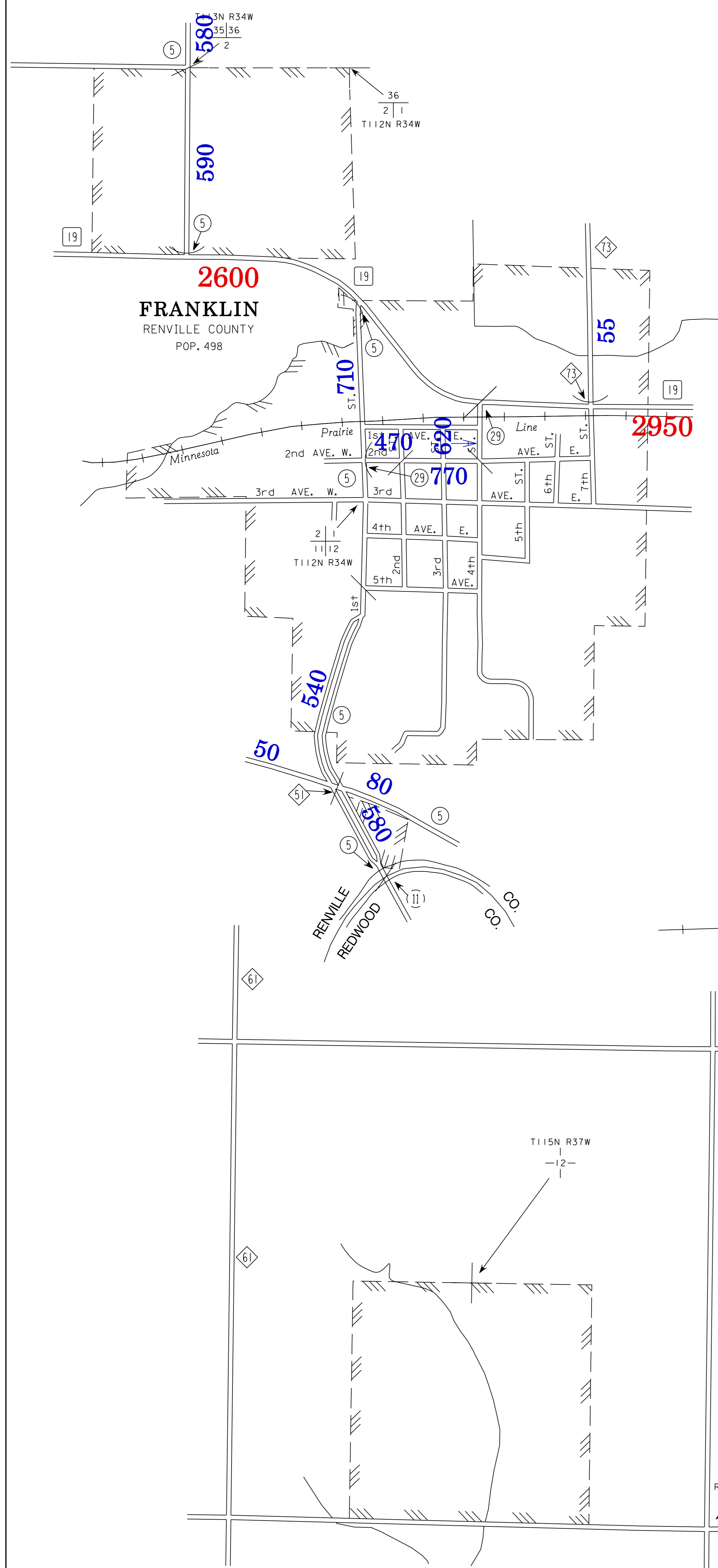


2007  
BASIC DATA - 1977

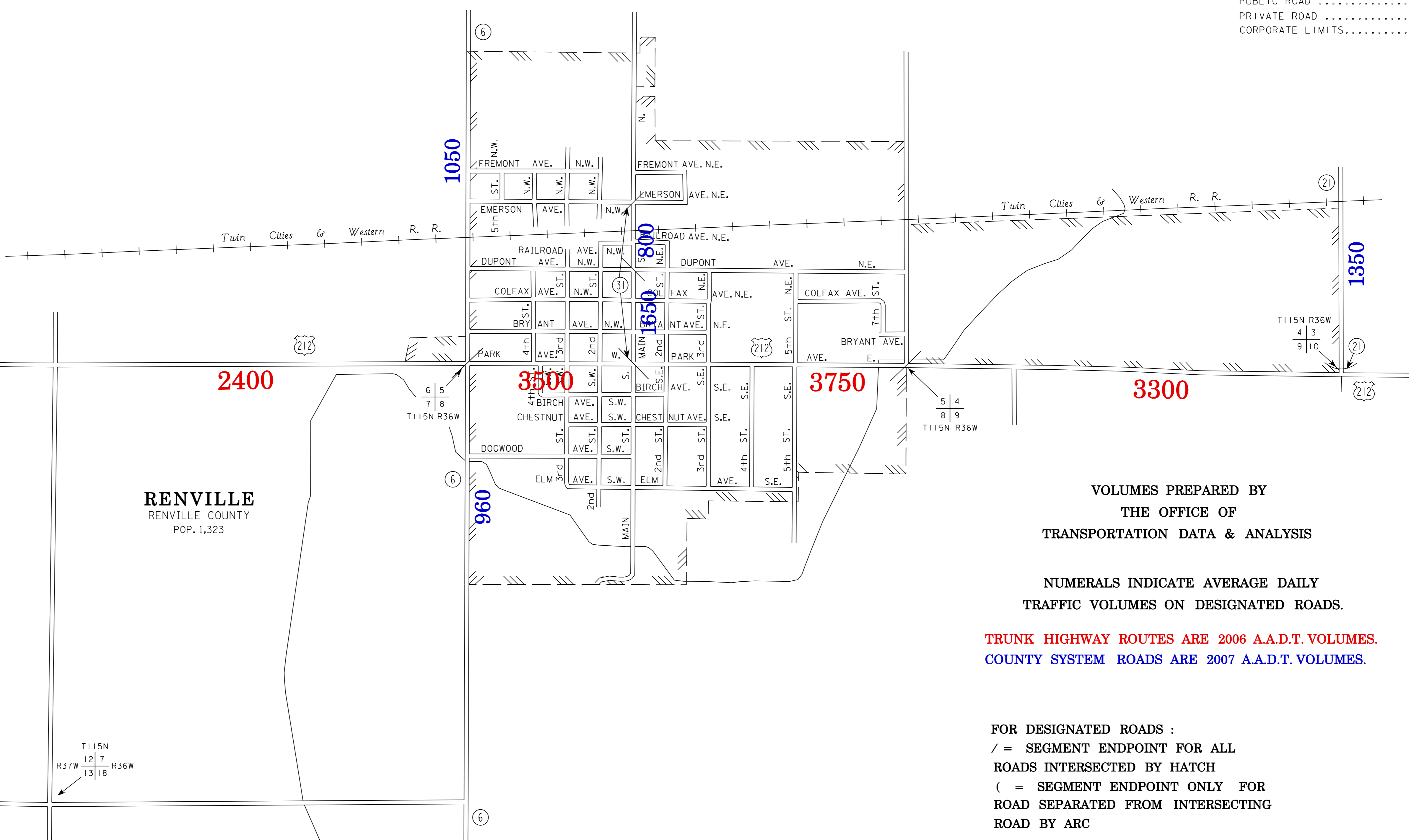


LEGEND

- INTERSTATE TRUNK HIGHWAY..... (I)
- U.S. TRUNK HIGHWAY..... (10)
- STATE TRUNK HIGHWAY..... (55)
- COUNTY STATE AID HIGHWAY..... (2)
- COUNTY ROAD..... (6)
- PUBLIC ROAD..... (D)
- PRIVATE ROAD..... (---)
- CORPORATE LIMITS..... (---)



TRAFFIC VOLUMES ARE SUBJECT TO VARIABILITY AND CONSTRUCTION EFFECTS  
FOR MORE INFO VISIT: <http://www.dot.state.mn.us/traffic/data/html/aadt.html>



VOLUMES PREPARED BY  
THE OFFICE OF  
TRANSPORTATION DATA & ANALYSIS

NUMERALS INDICATE AVERAGE DAILY  
TRAFFIC VOLUMES ON DESIGNATED ROADS.

TRUNK HIGHWAY ROUTES ARE 2006 A.A.D.T. VOLUMES.  
COUNTY SYSTEM ROADS ARE 2007 A.A.D.T. VOLUMES.

FOR DESIGNATED ROADS :  
/ = SEGMENT ENDPOINT FOR ALL  
ROADS INTERSECTED BY HATCH  
( = SEGMENT ENDPOINT ONLY FOR  
ROAD SEPARATED FROM INTERSECTING  
ROAD BY ARC

MUNICIPALITIES SHOWN  
ON THIS SHEET  
DANUBE  
FRANKLIN  
RENVILLE

NOTE: 2000 U.S. CENSUS FIGURES SHOWN FOR ALL MUNICIPALITIES UNLESS OTHERWISE STATED.