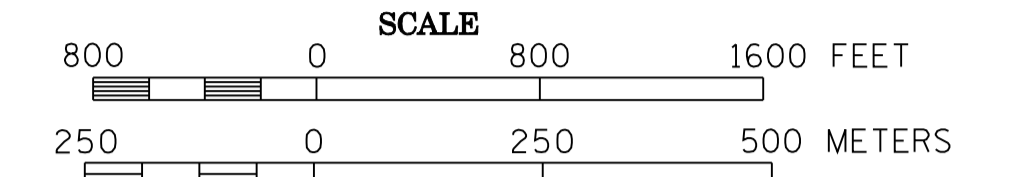


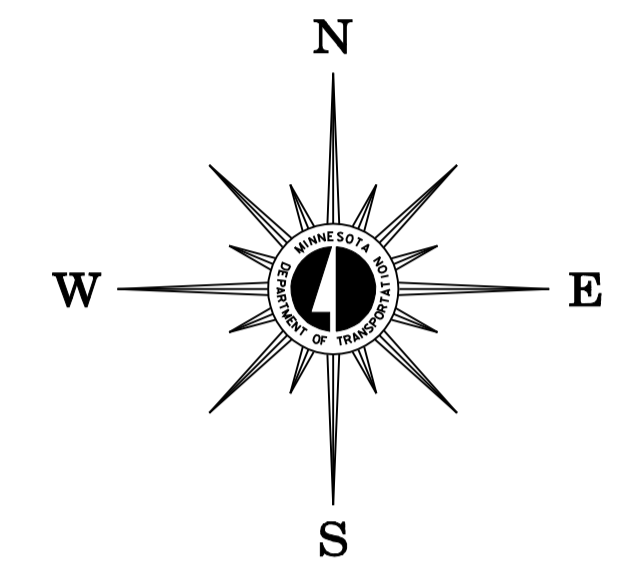
2007 TRAFFIC VOLUMES

MUNICIPALITIES OF
MEEKER CO.

PREPARED BY THE
MINNESOTA DEPARTMENT OF TRANSPORTATION
OFFICE OF TRANSPORTATION DATA & ANALYSIS
IN COOPERATION WITH
U.S. DEPARTMENT OF TRANSPORTATION
FEDERAL HIGHWAY ADMINISTRATION

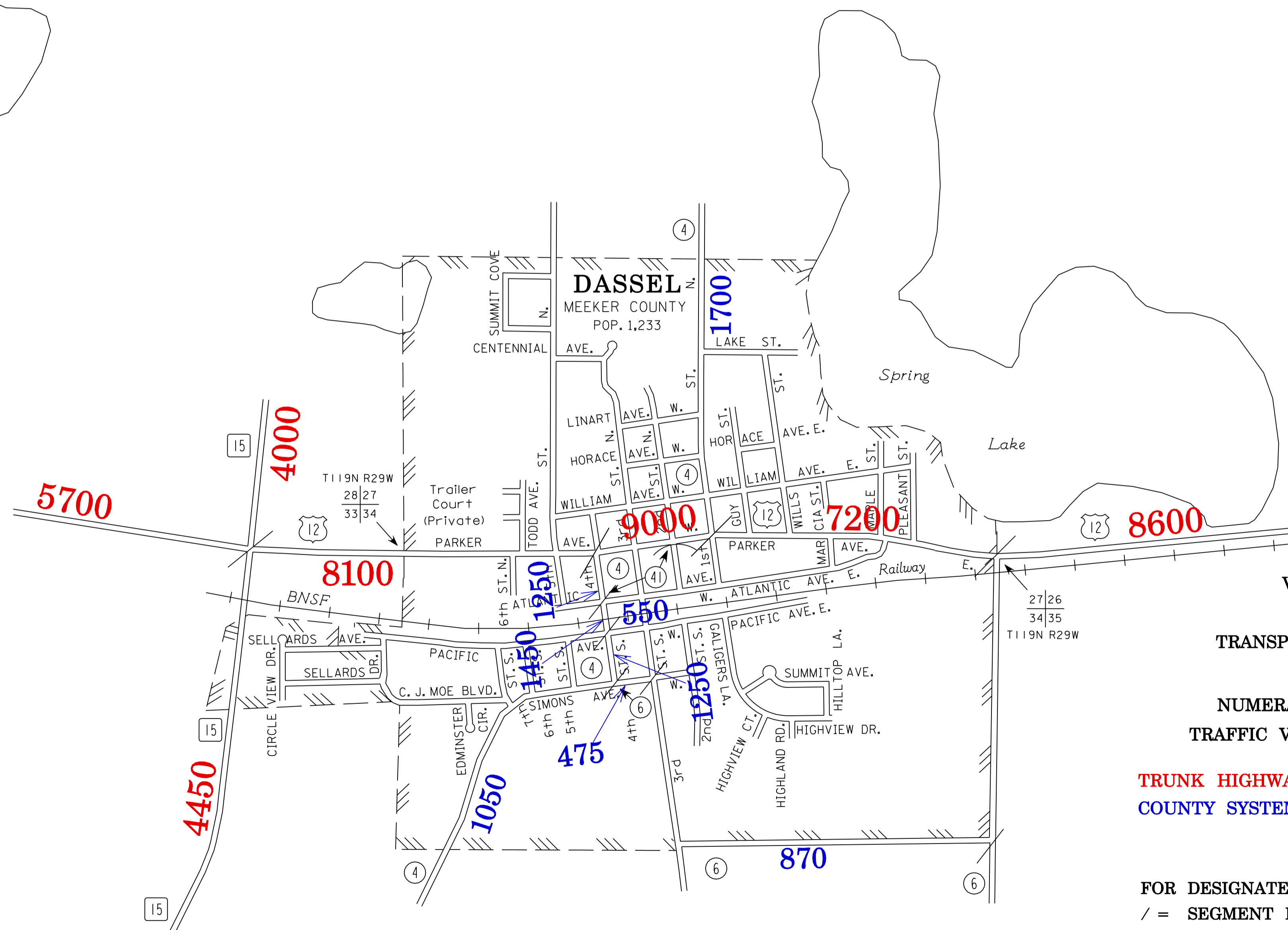
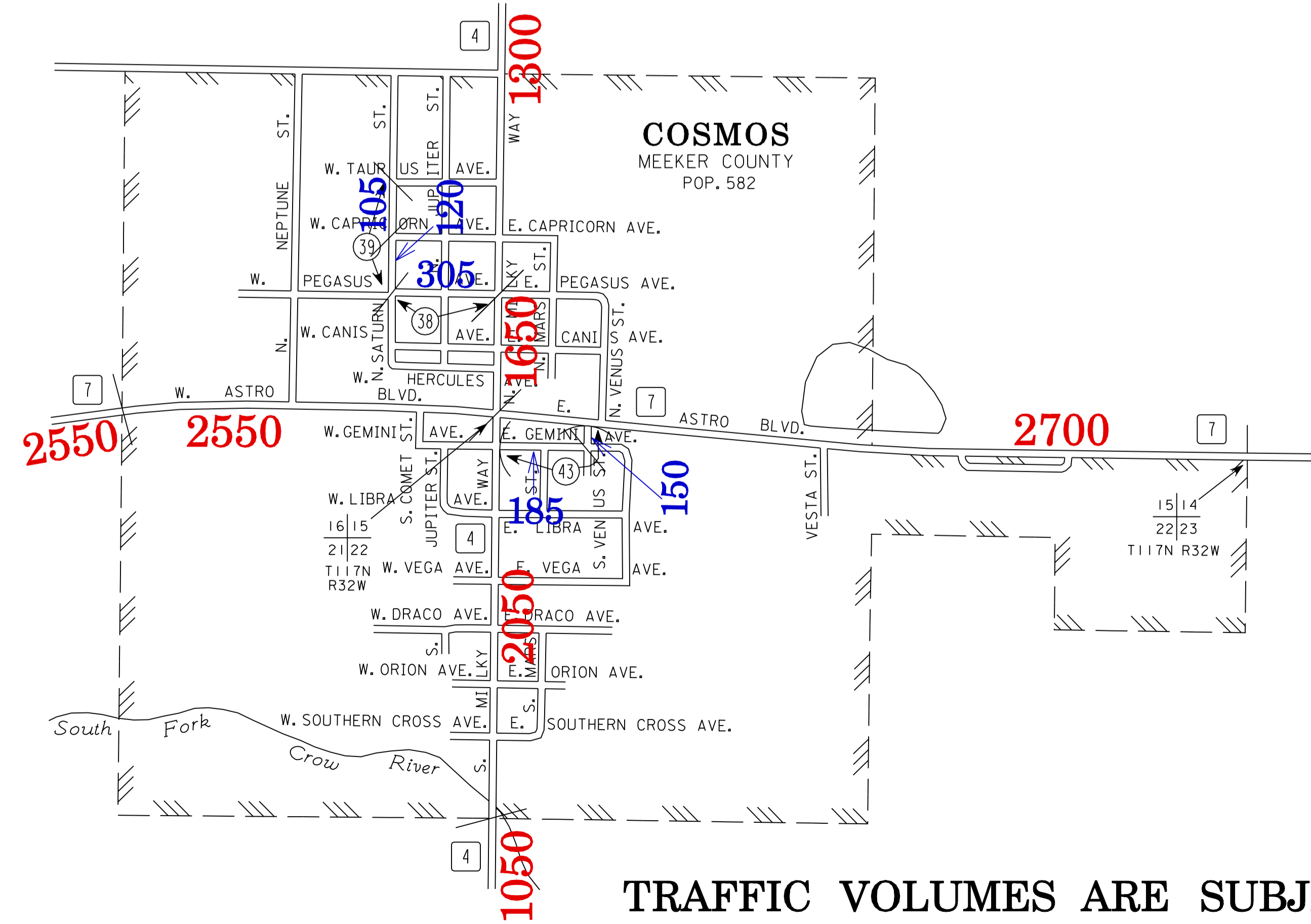
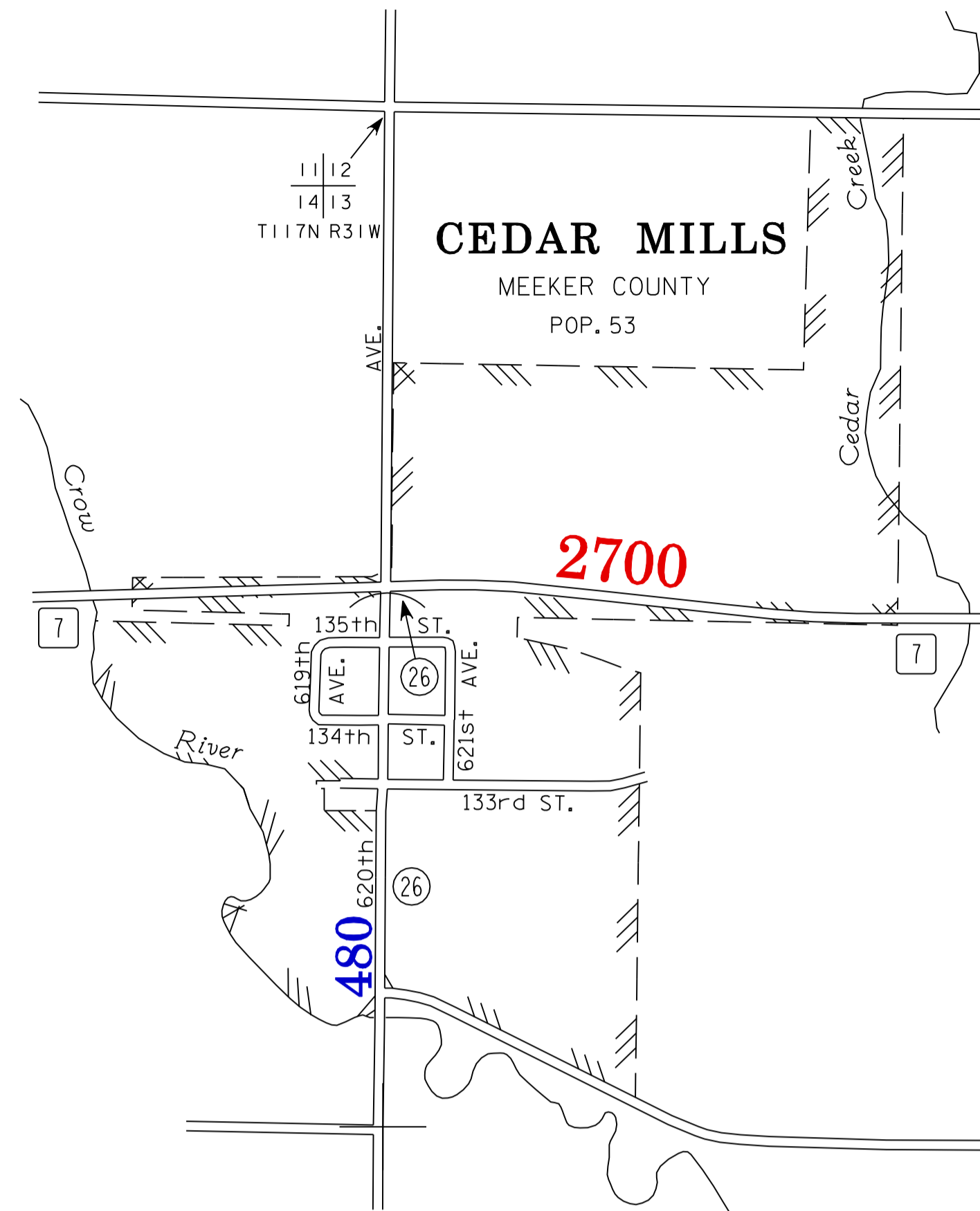
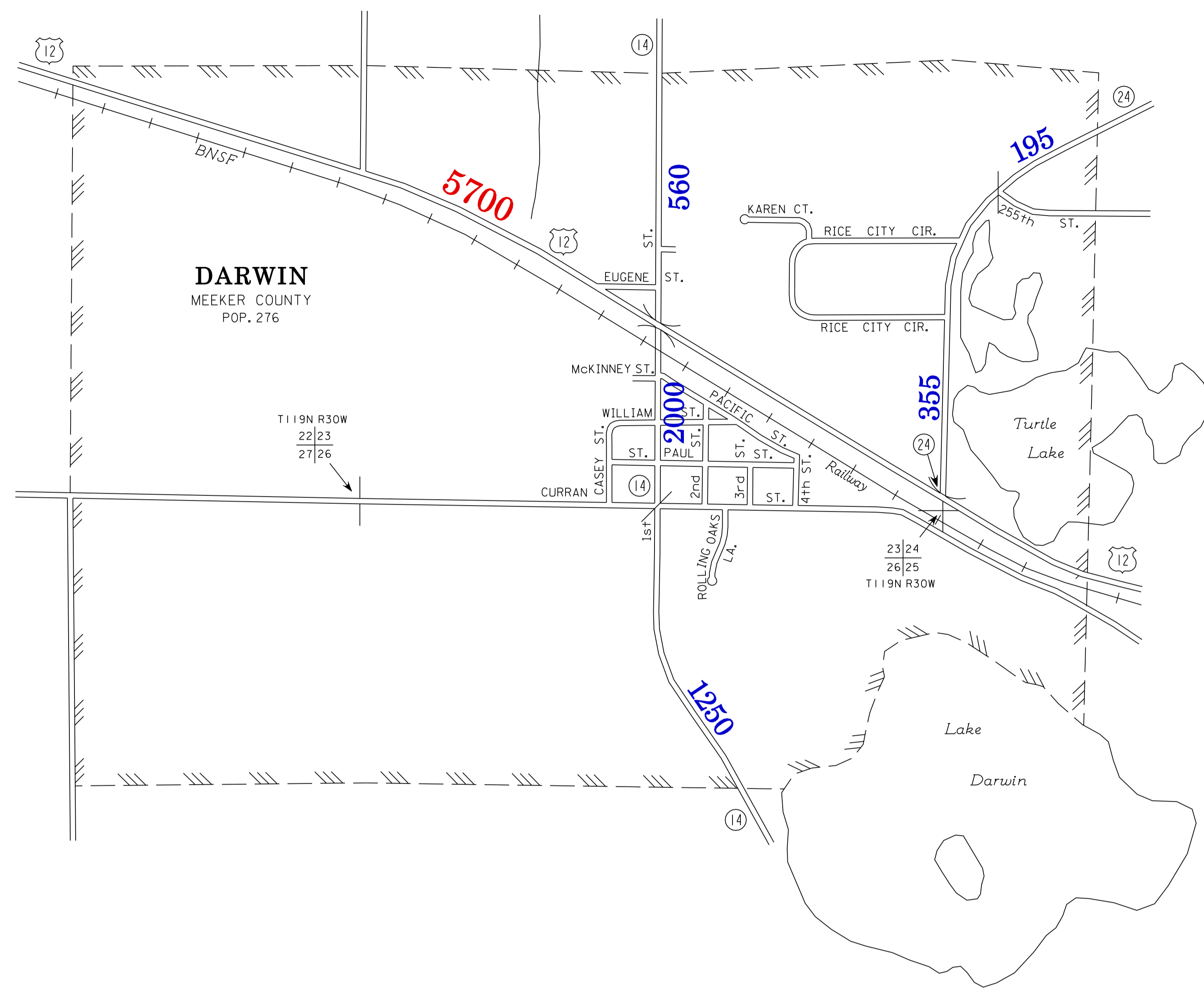


2007
BASIC DATA - 1977



LEGEND

- INTERSTATE TRUNK HIGHWAY..... (I-5)
- U.S. TRUNK HIGHWAY..... (12)
- STATE TRUNK HIGHWAY..... (55)
- COUNTY STATE AID HIGHWAY..... (24)
- COUNTY ROAD..... (4)
- PUBLIC ROAD..... (7)
- PRIVATE ROAD..... (15)
- CORPORATE LIMITS.....



VOLUMES PREPARED BY
THE OFFICE OF
TRANSPORTATION DATA & ANALYSIS

NUMERALS INDICATE AVERAGE DAILY
TRAFFIC VOLUMES ON DESIGNATED ROADS.

TRUNK HIGHWAY ROUTES ARE 2006 A.A.D.T. VOLUMES.
COUNTY SYSTEM ROADS ARE 2007 A.A.D.T. VOLUMES.

FOR DESIGNATED ROADS :
/ = SEGMENT ENDPOINT FOR ALL
ROADS INTERSECTED BY HATCH
(= SEGMENT ENDPOINT ONLY FOR
ROAD SEPARATED FROM INTERSECTING
ROAD BY ARC

MUNICIPALITIES SHOWN
ON THIS SHEET
CEDAR MILLS
COSMOS
DARWIN
DASSEL

TRAFFIC VOLUMES ARE SUBJECT TO VARIABILITY AND CONSTRUCTION EFFECTS
FOR MORE INFO VISIT: <http://www.dot.state.mn.us/traffic/data/html/aadt.html>

NOTE: 2000 U.S. CENSUS FIGURES SHOWN FOR ALL MUNICIPALITIES UNLESS OTHERWISE STATED.