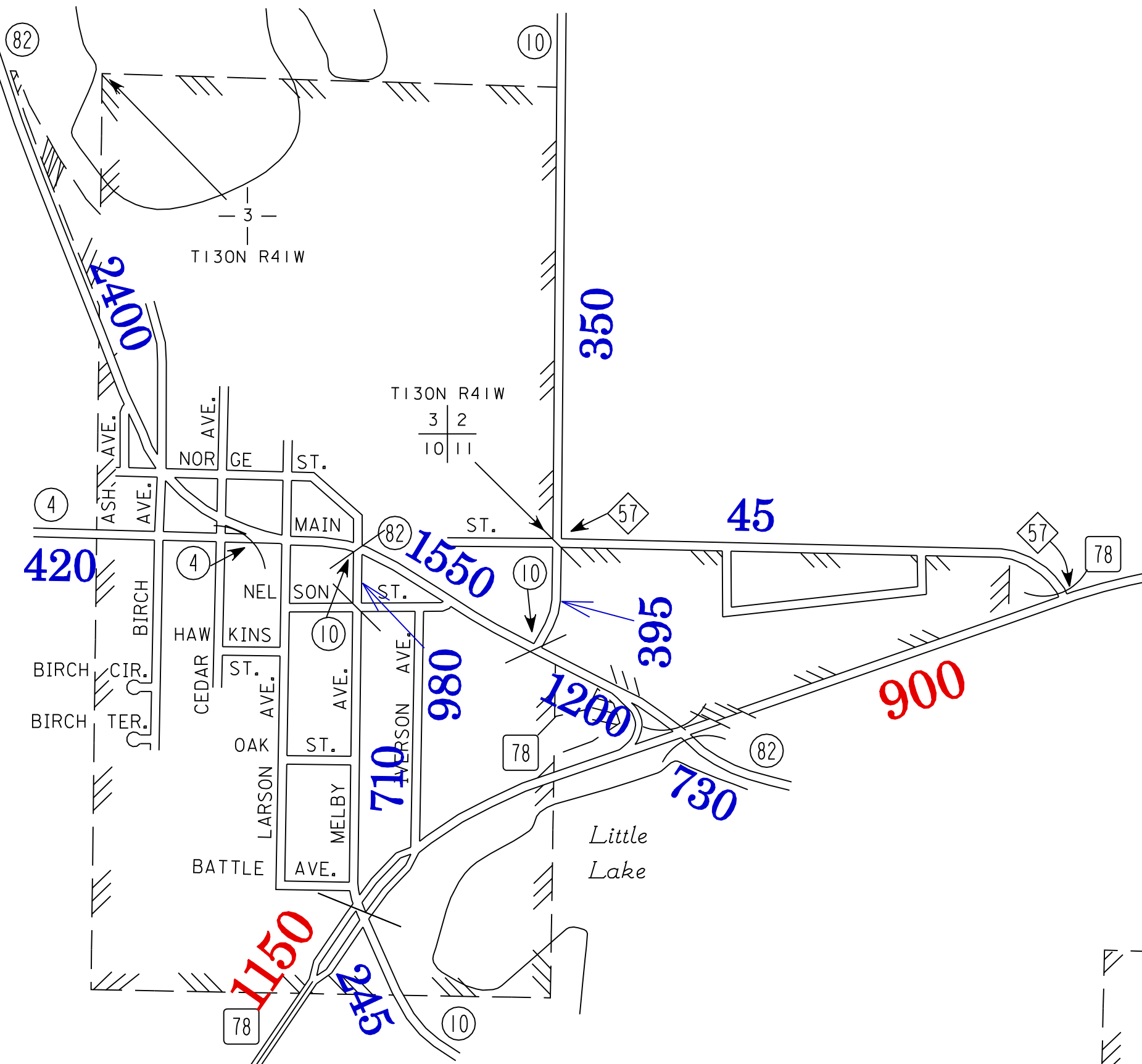
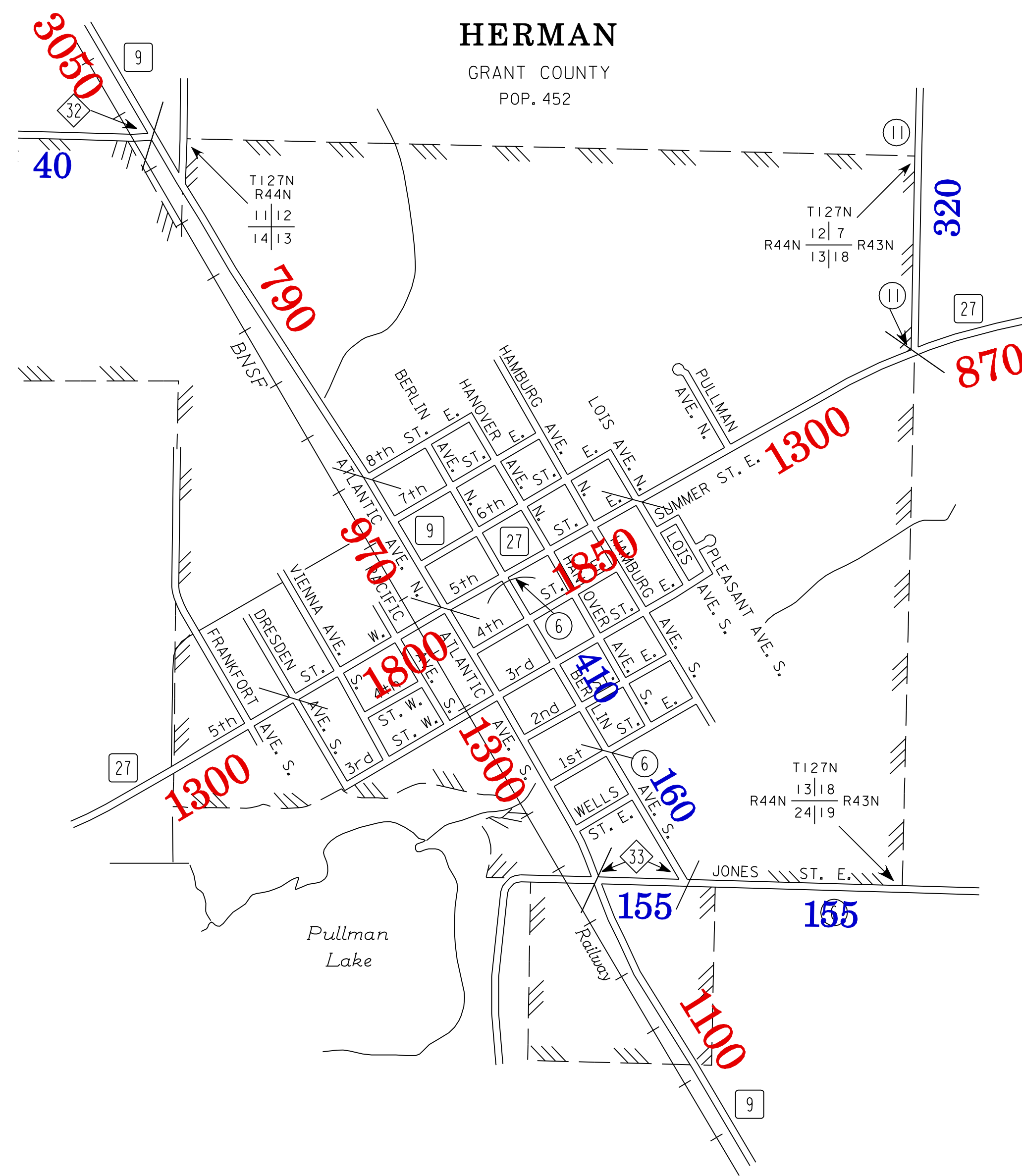


ASHBY
GRANT COUNTY
POP. 472



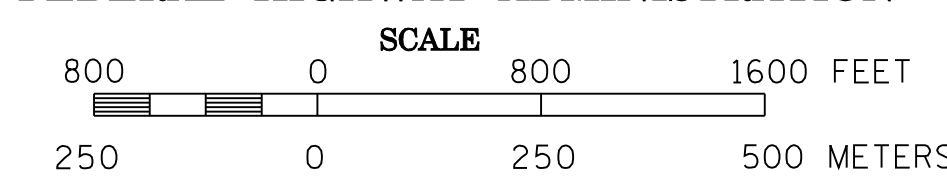
HERMAN
GRANT COUNTY
POP. 452



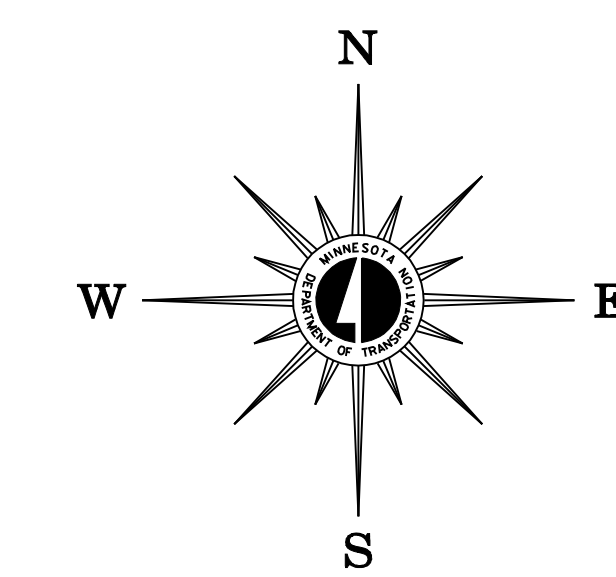
2007 TRAFFIC VOLUMES

MUNICIPALITIES OF GRANT CO.

PREPARED BY THE
MINNESOTA DEPARTMENT OF TRANSPORTATION
OFFICE OF TRANSPORTATION DATA & ANALYSIS
IN COOPERATION WITH
U.S. DEPARTMENT OF TRANSPORTATION
FEDERAL HIGHWAY ADMINISTRATION



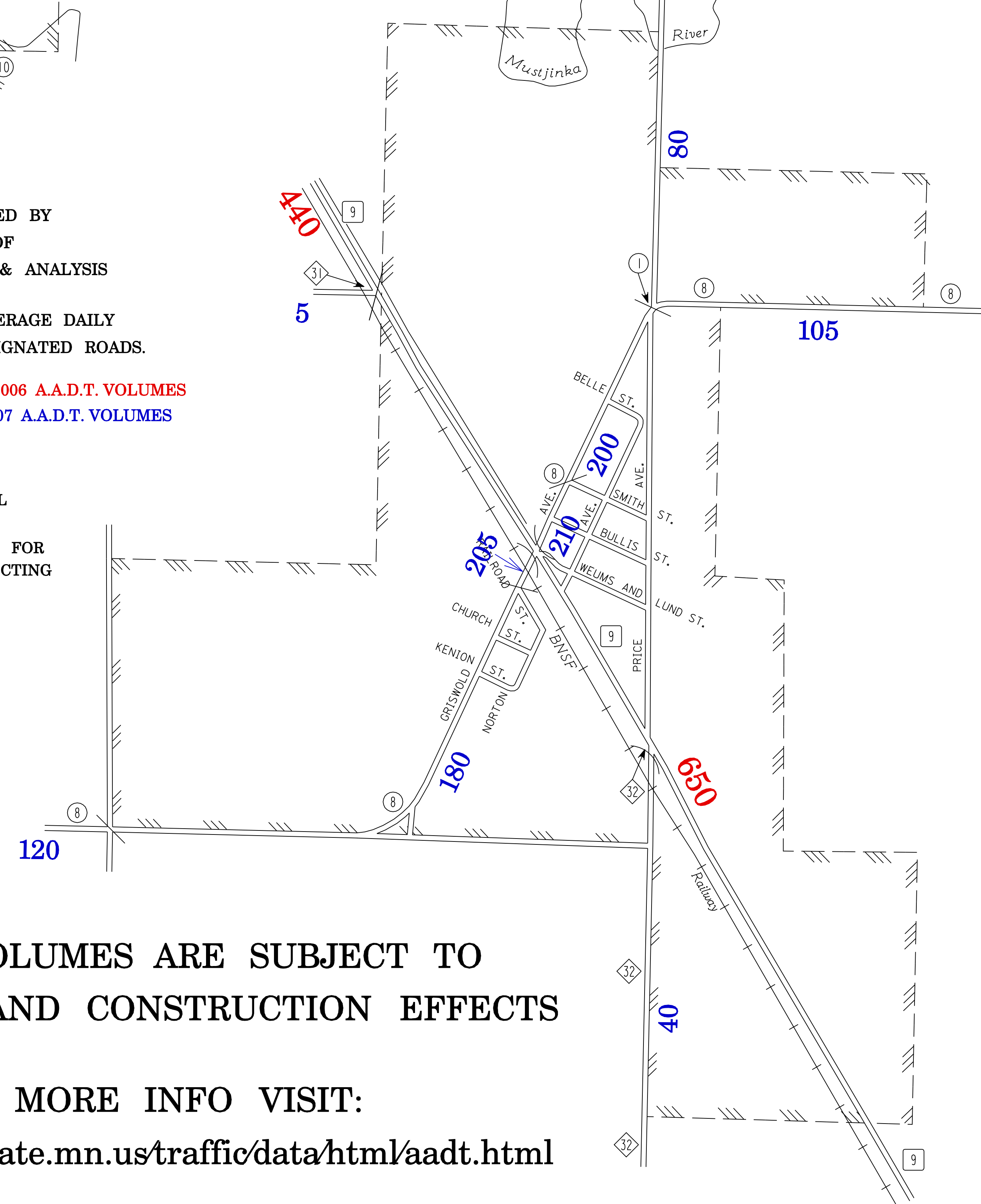
2007
BASIC DATA - 1977



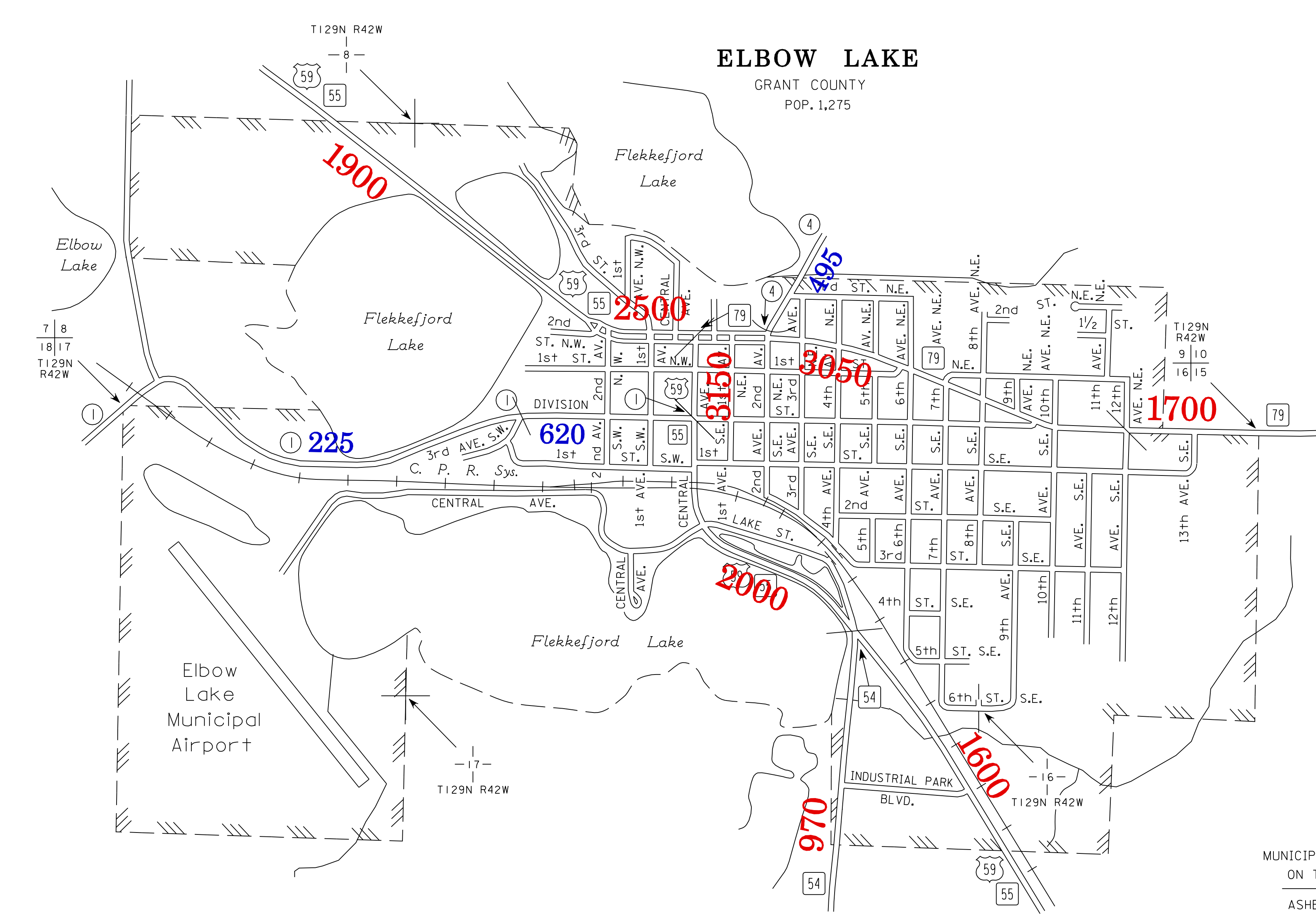
LEGEND

- INTERSTATE TRUNK HIGHWAY..... (I)
- U.S. TRUNK HIGHWAY..... (SH)
- STATE TRUNK HIGHWAY..... (SH)
- COUNTY STATE AID HIGHWAY..... (CSA)
- COUNTY ROAD..... (CR)
- PUBLIC ROAD..... (PR)
- PRIVATE ROAD..... (PR)
- CORPORATE LIMITS..... (CL)

NORCROSS
GRANT COUNTY
POP. 59



ELBOW LAKE
GRANT COUNTY
POP. 1,275



VOLUMES PREPARED BY
THE OFFICE OF
TRANSPORTATION DATA & ANALYSIS

NUMERALS INDICATE AVERAGE DAILY
TRAFFIC VOLUMES ON DESIGNATED ROADS.

TRUNK HIGHWAY ROUTES ARE 2006 A.A.D.T. VOLUMES
COUNTY SYSTEM ROADS ARE 2007 A.A.D.T. VOLUMES

FOR DESIGNATED ROADS :
/ = SEGMENT ENDPOINT FOR ALL
ROADS INTERSECTED BY HATCH
(= SEGMENT ENDPOINT ONLY FOR
ROAD SEPARATED FROM INTERSECTING
ROAD BY ARC

**TRAFFIC VOLUMES ARE SUBJECT TO
VARIABILITY AND CONSTRUCTION EFFECTS**

FOR MORE INFO VISIT:

<http://www.dot.state.mn.us/traffic/data/html/aadt.html>

MUNICIPALITIES SHOWN
ON THIS SHEET
ASHBY
ELBOW LAKE
HERMAN
NORCROSS

NOTE: 2000 U.S. CENSUS FIGURES SHOWN FOR ALL MUNICIPALITIES UNLESS OTHERWISE STATED.