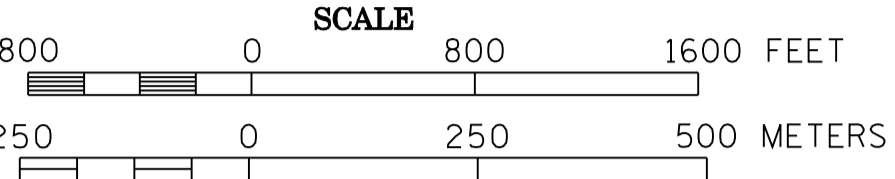


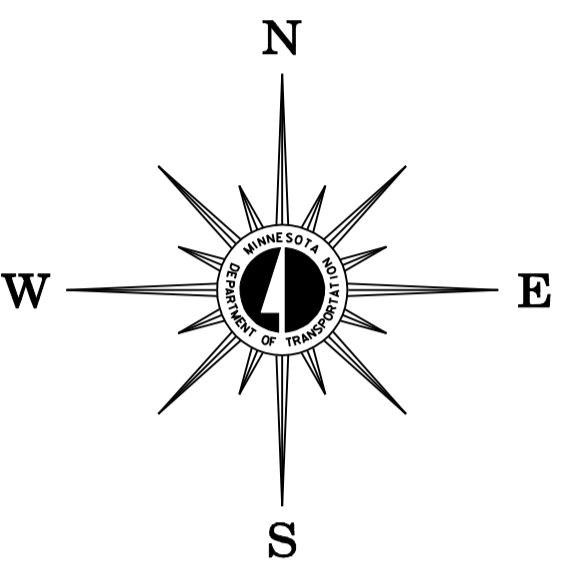
2007 TRAFFIC VOLUMES

MUNICIPALITIES OF
BELTRAMI CO.

PREPARED BY THE
MINNESOTA DEPARTMENT OF TRANSPORTATION
OFFICE OF TRANSPORTATION DATA & ANALYSIS
IN COOPERATION WITH
U.S. DEPARTMENT OF TRANSPORTATION
FEDERAL HIGHWAY ADMINISTRATION



2007
BASIC DATA - 1977



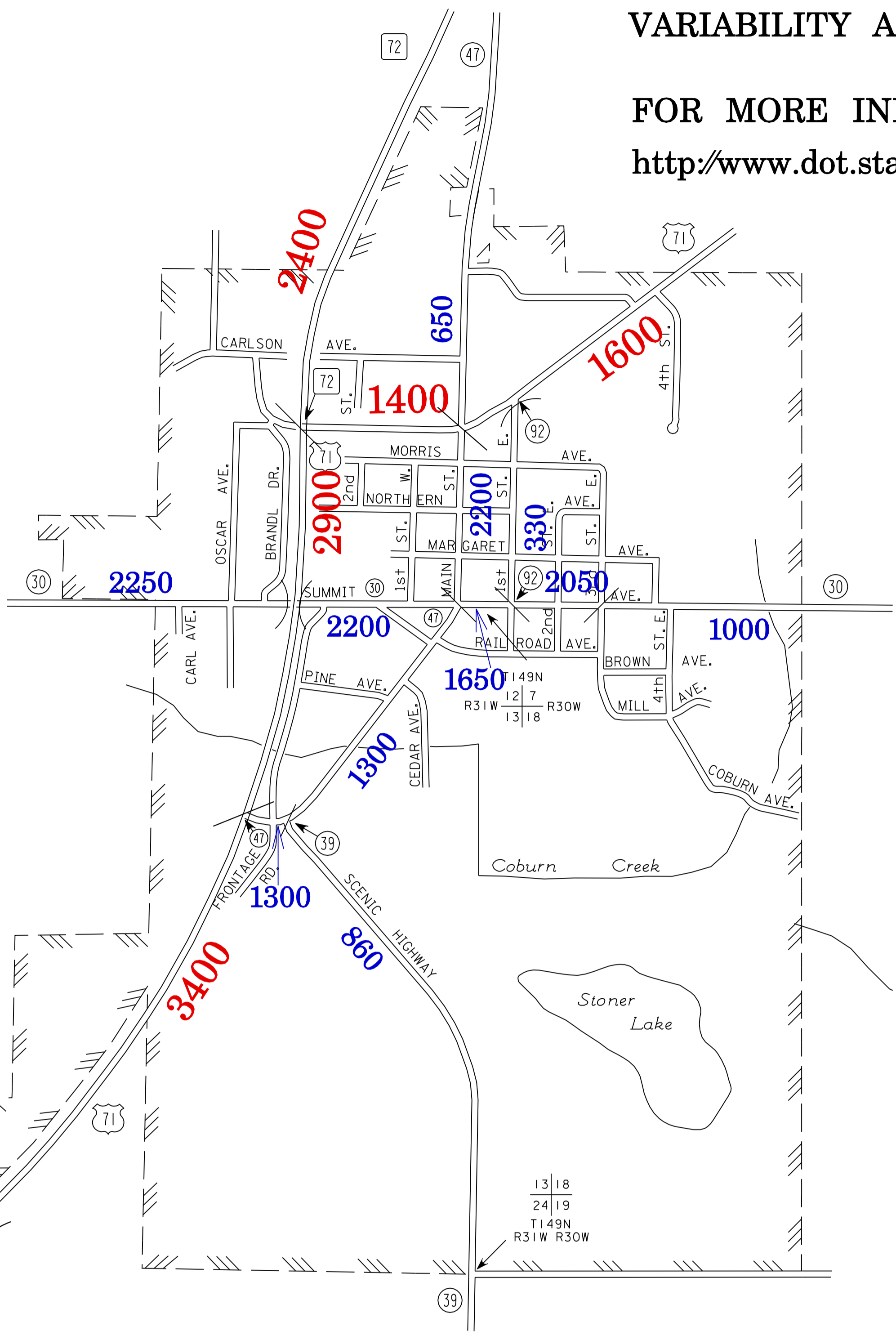
LEGEND

- INTERSTATE TRUNK HIGHWAY..... (I-35)
- U.S. TRUNK HIGHWAY..... (71)
- STATE TRUNK HIGHWAY..... (21)
- COUNTY STATE AID HIGHWAY..... (22)
- COUNTY ROAD..... (30)
- PUBLIC ROAD.....
- PRIVATE ROAD.....
- CORPORATE LIMITS.....

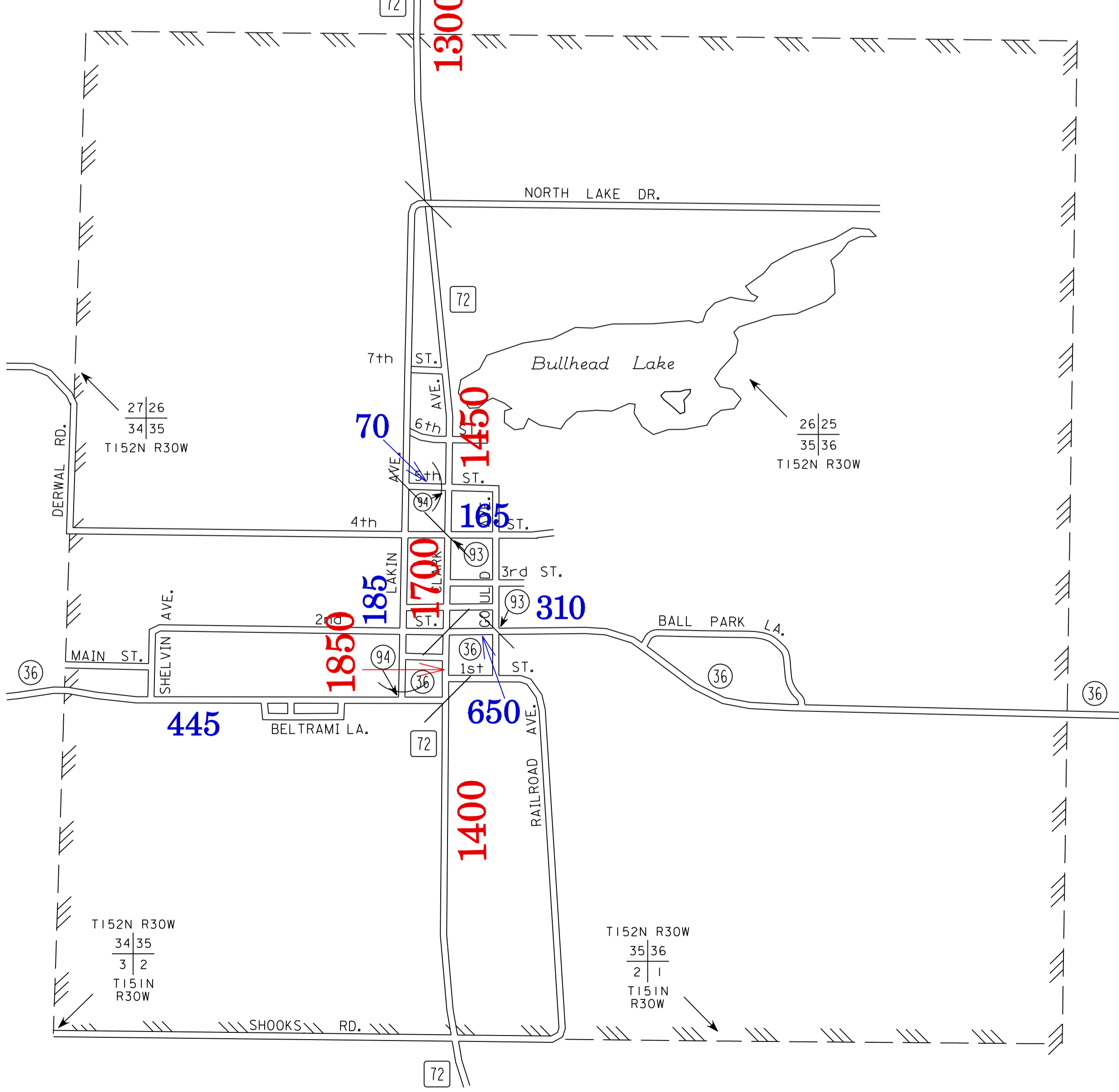
TRAFFIC VOLUMES ARE SUBJECT TO
VARIABILITY AND CONSTRUCTION EFFECTS

FOR MORE INFO VISIT:
<http://www.dot.state.mn.us/traffic/data/html/aadt.html>

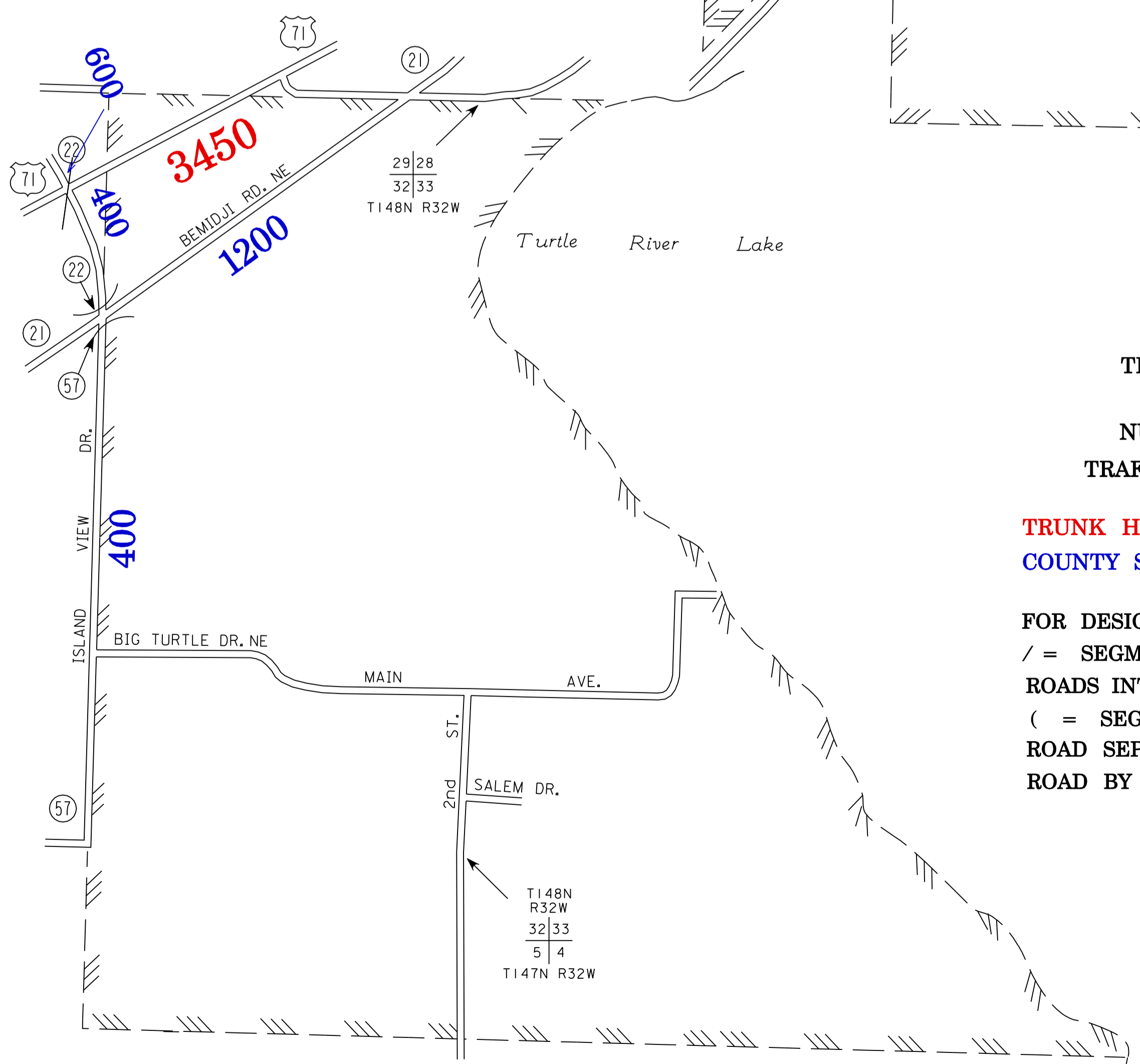
BLACKDUCK
BELTRAMI COUNTY
POP. 696



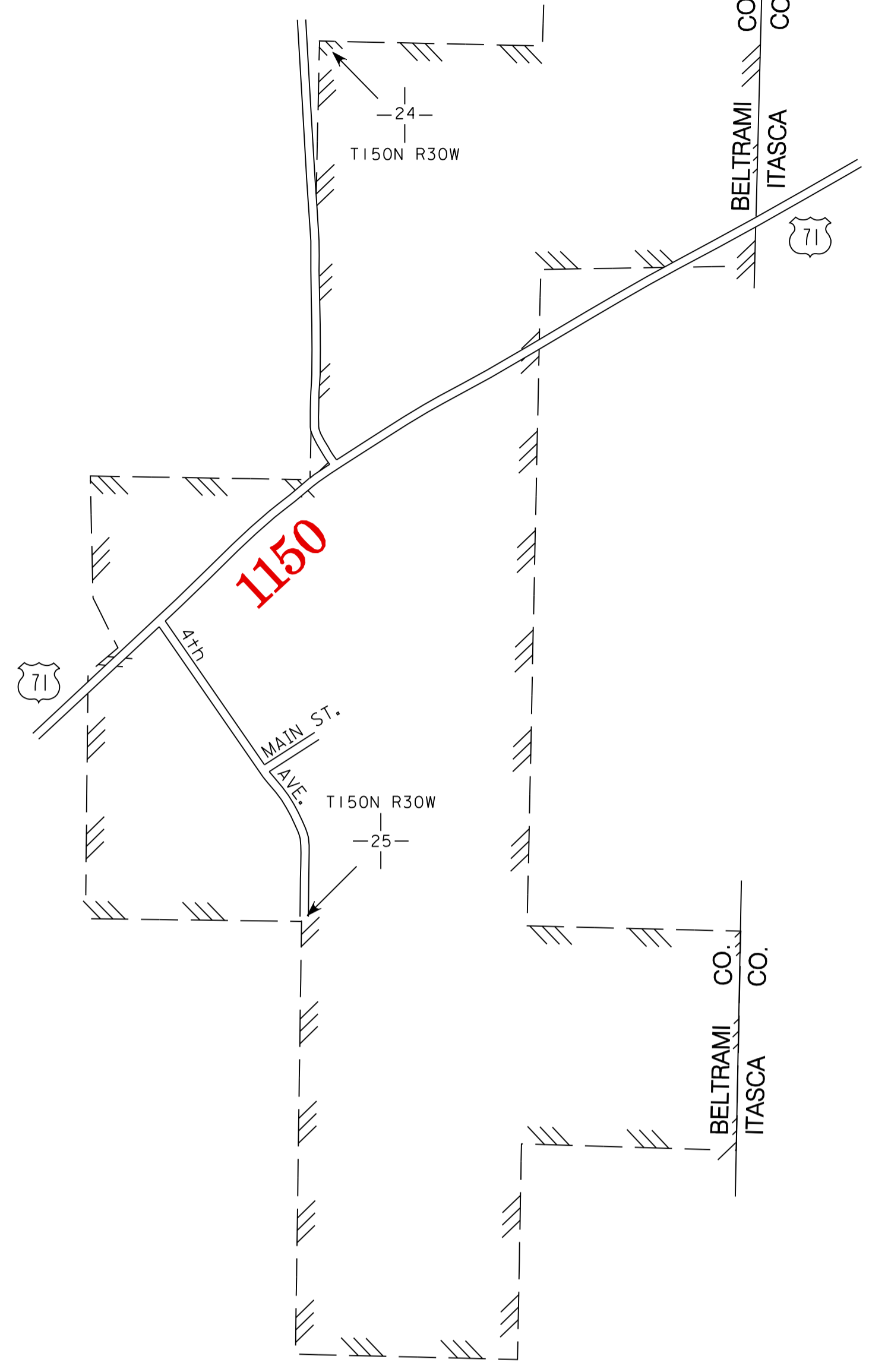
KELLIHER
BELTRAMI COUNTY
POP. 294



TURTLE RIVER
BELTRAMI COUNTY
POP. 75



FUNKLEY
BELTRAMI COUNTY
POP. 15



VOLUMES PREPARED BY
THE OFFICE OF
TRANSPORTATION DATA & ANALYSIS

NUMERALS INDICATE AVERAGE DAILY
TRAFFIC VOLUMES ON DESIGNATED ROADS.

TRUNK HIGHWAY ROUTES ARE 2006 A.A.D.T. VOLUMES
COUNTY SYSTEM ROADS ARE 2007 A.A.D.T. VOLUMES

FOR DESIGNATED ROADS :
/ = SEGMENT ENDPOINT FOR ALL
ROADS INTERSECTED BY HATCH
(= SEGMENT ENDPOINT ONLY FOR
ROAD SEPARATED FROM INTERSECTING
ROAD BY ARC

MUNICIPALITIES SHOWN
ON THIS SHEET
BLACKDUCK
FUNKLEY
KELLIHER
TURTLE RIVER

NOTE: 2000 U.S. CENSUS FIGURES SHOWN FOR ALL MUNICIPALITIES UNLESS OTHERWISE STATED.