

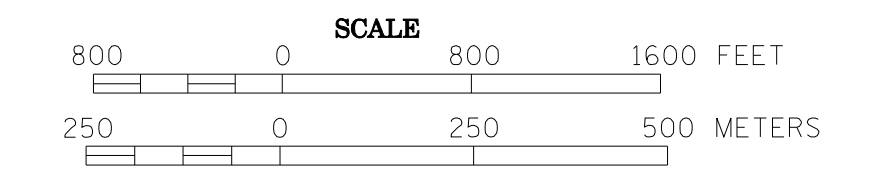
# 2007 TRAFFIC VOLUMES

(SEE NOTE)

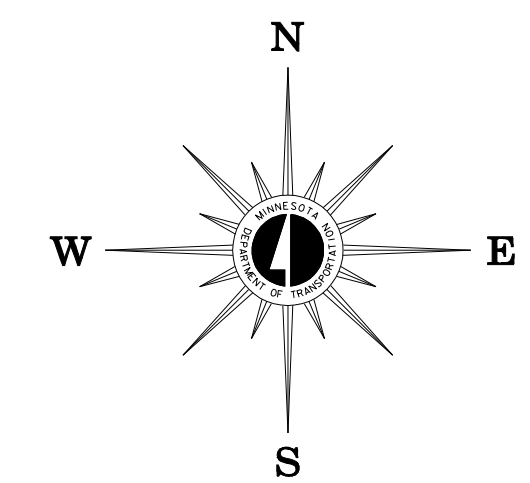
MUNICIPALITY OF

## CIRCLE PINES

PREPARED BY THE  
 MINNESOTA DEPARTMENT OF TRANSPORTATION  
 OFFICE OF TRANSPORTATION DATA & ANALYSIS  
 IN COOPERATION WITH  
 U.S. DEPARTMENT OF TRANSPORTATION  
 FEDERAL HIGHWAY ADMINISTRATION



2007  
 BASIC DATA - 1990



### LEGEND

- INTERSTATE TRUNK HIGHWAY..... (15)
- U.S. TRUNK HIGHWAY..... (10)
- STATE TRUNK HIGHWAY..... (55)
- COUNTY STATE AID HIGHWAY..... (23)
- COUNTY ROAD..... (5)
- CORPORATE LIMITS.....
- PUBLIC ROAD.....
- PRIVATE ROAD.....

### MUNICIPAL STATE AID STREET SYSTEM

#### LEGEND

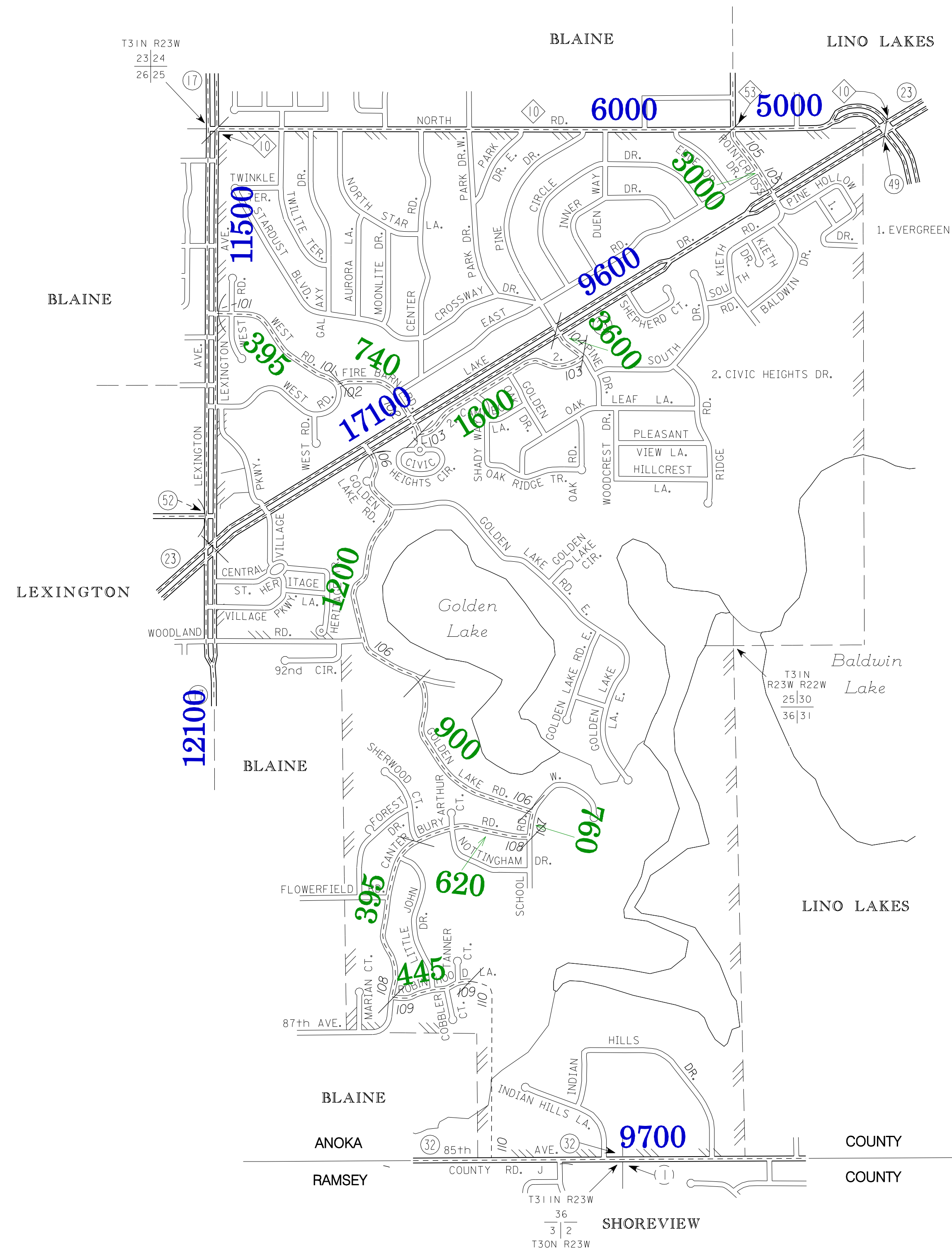
- MUNICIPAL COUNTY STATE AID STREET.....
- MUNICIPAL STATE AID STREET.....
- COUNTY STATE AID HIGHWAY.....
- COUNTY ROAD.....
- TRUNK HIGHWAY.....

VOLUMES PREPARED BY  
 THE OFFICE OF  
 TRANSPORTATION DATA & ANALYSIS

NUMERALS INDICATE AVERAGE DAILY  
 TRAFFIC VOLUMES ON DESIGNATED ROADS.

TRUNK HIGHWAY ROUTES ARE 2006 A.A.D.T. VOLUMES  
 COUNTY SYSTEM ROADS ARE 2007 A.A.D.T. VOLUMES  
 MUNICIPAL STREET ROUTES ARE 2007 A.A.D.T. VOLUMES

FOR DESIGNATED ROADS :  
 / = SEGMENT ENDPOINT FOR ALL  
 ROADS INTERSECTED BY HATCH  
 ( = SEGMENT ENDPOINT ONLY FOR  
 ROAD SEPARATED FROM INTERSECTING  
 ROAD BY ARC



TRAFFIC VOLUMES ARE SUBJECT TO VARIABILITY AND CONSTRUCTION EFFECTS

FOR MORE INFO VISIT: <http://www.dot.state.mn.us/traffic/data/html/aadt.html>