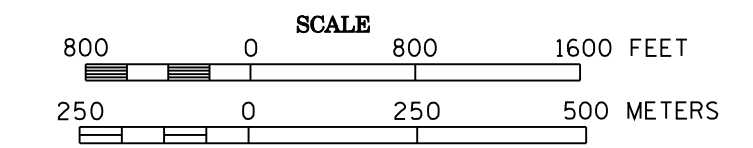


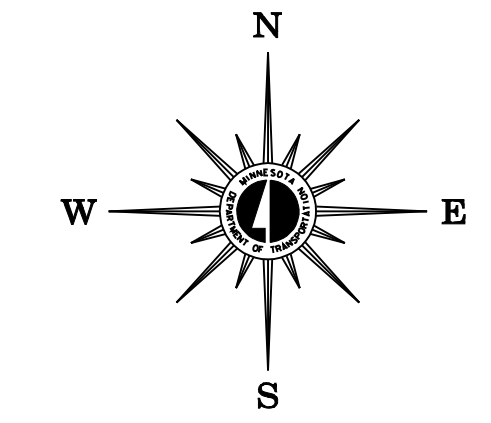
2006 TRAFFIC VOLUMES

MUNICIPALITIES OF  
**OLMSTED CO.**

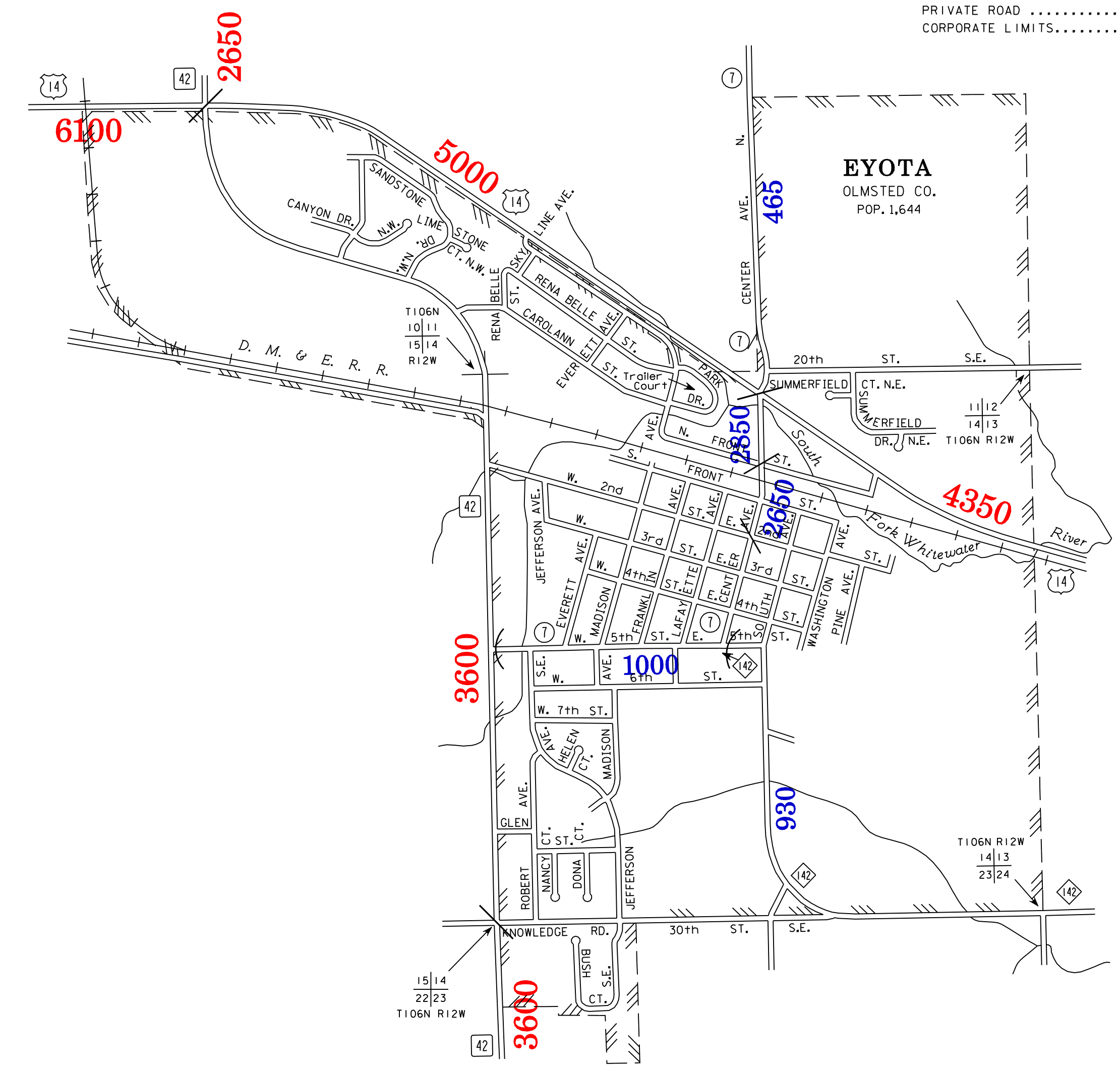
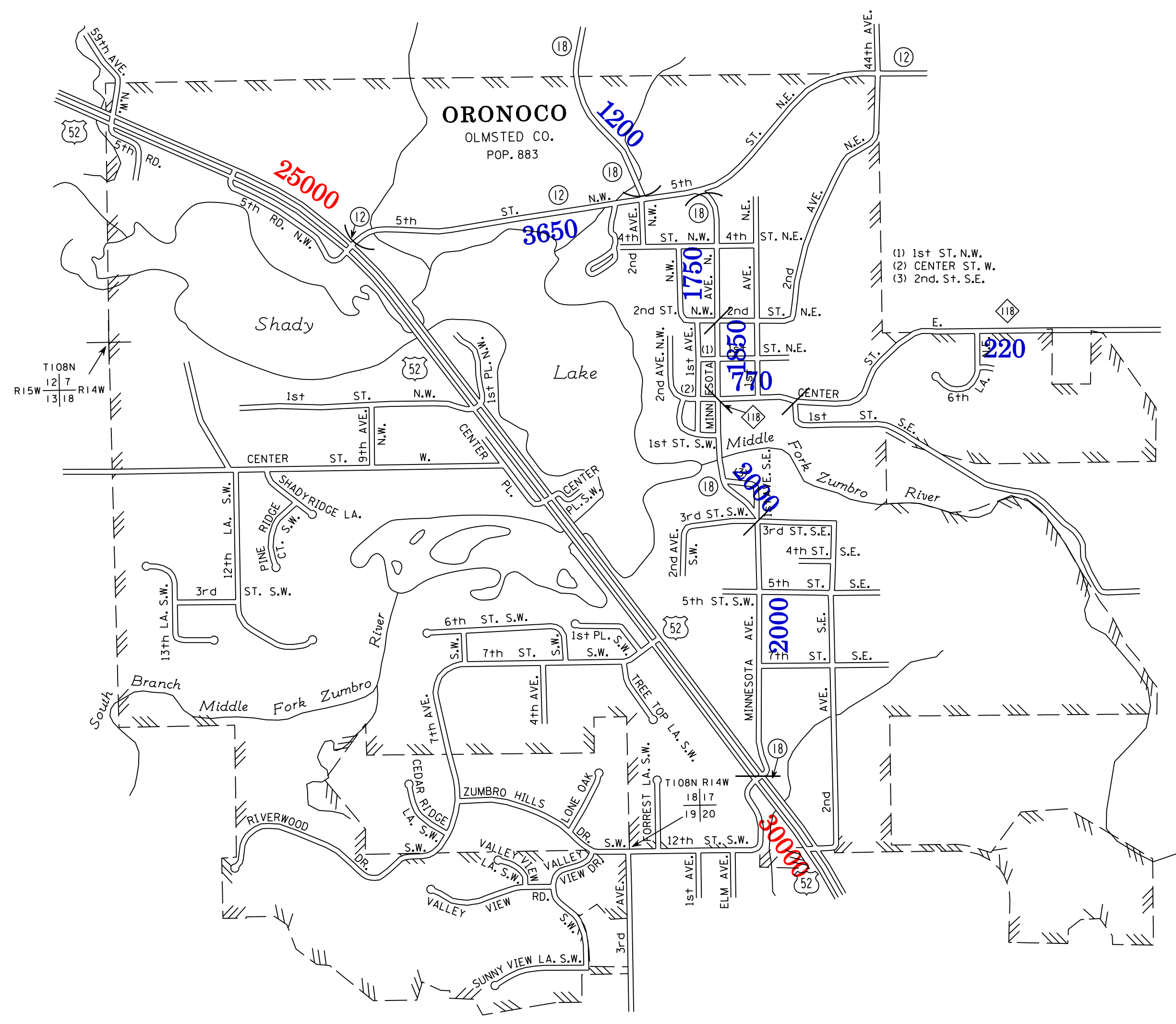
PREPARED BY THE  
MINNESOTA DEPARTMENT OF TRANSPORTATION  
OFFICE OF TRANSPORTATION DATA & ANALYSIS  
IN COOPERATION WITH  
U.S. DEPARTMENT OF TRANSPORTATION  
FEDERAL HIGHWAY ADMINISTRATION



2006  
BASIC DATA - 1978



- LEGEND**
- INTERSTATE TRUNK HIGHWAY..... 15
  - U.S. TRUNK HIGHWAY..... 18
  - STATE TRUNK HIGHWAY..... 16
  - COUNTY STATE AID HIGHWAY..... 20
  - COUNTY ROAD..... 14
  - PUBLIC ROAD..... 12
  - PRIVATE ROAD..... 10
  - CORPORATE LIMITS..... 11



VOLUMES PREPARED BY  
THE OFFICE OF  
TRANSPORTATION DATA & ANALYSIS

NUMERALS INDICATE AVERAGE DAILY  
TRAFFIC VOLUMES ON DESIGNATED ROADS.

TRUNK HIGHWAY ROUTES ARE 2006 A.A.D.T. VOLUMES.  
COUNTY SYSTEM ROADS ARE 2006 A.A.D.T. VOLUMES.

FOR DESIGNATED ROADS :  
/ = SEGMENT ENDPOINT FOR ALL  
ROADS INTERSECTED BY HATCH  
( = SEGMENT ENDPOINT ONLY FOR  
ROAD SEPARATED FROM INTERSECTING  
ROAD BY ARC

MUNICIPALITIES SHOWN  
ON THIS SHEET  
EYOTA  
ORONOCCO

NOTE: 2000 U.S. CENSUS FIGURES SHOWN FOR ALL MUNICIPALITIES UNLESS OTHERWISE STATED.