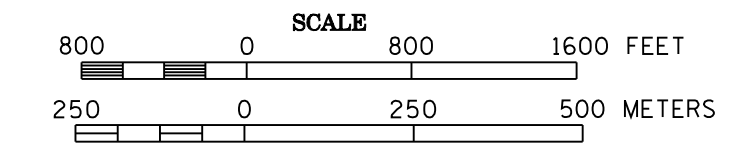
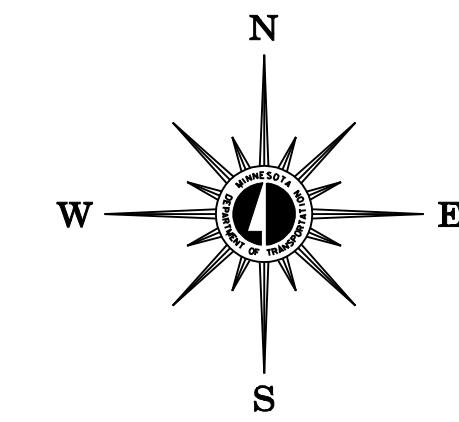


2006 TRAFFIC VOLUMES  
MUNICIPALITIES OF  
**MARSHALL CO.**

PREPARED BY THE  
MINNESOTA DEPARTMENT OF TRANSPORTATION  
OFFICE OF TRANSPORTATION DATA & ANALYSIS  
IN COOPERATION WITH  
U.S. DEPARTMENT OF TRANSPORTATION  
FEDERAL HIGHWAY ADMINISTRATION

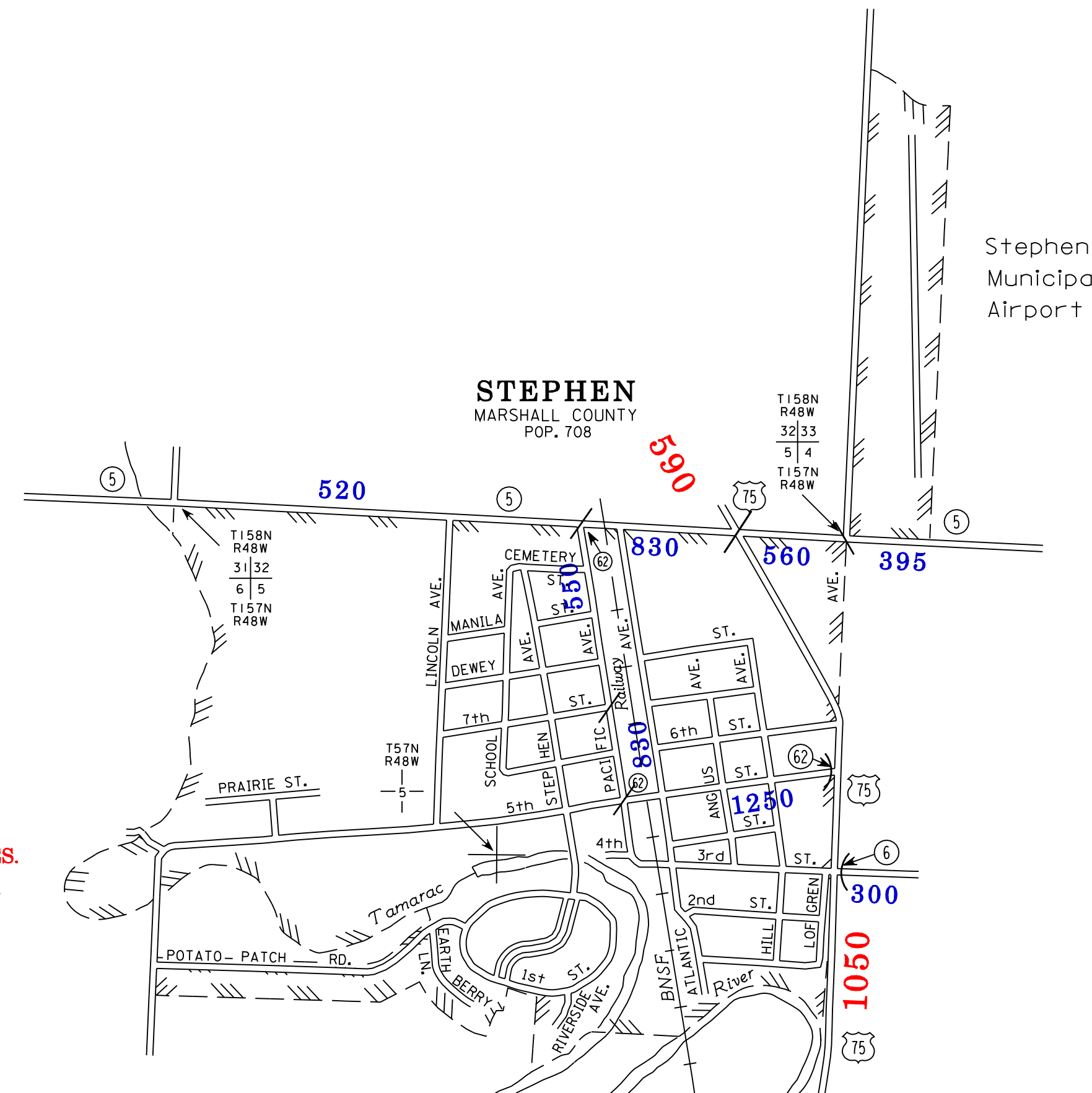
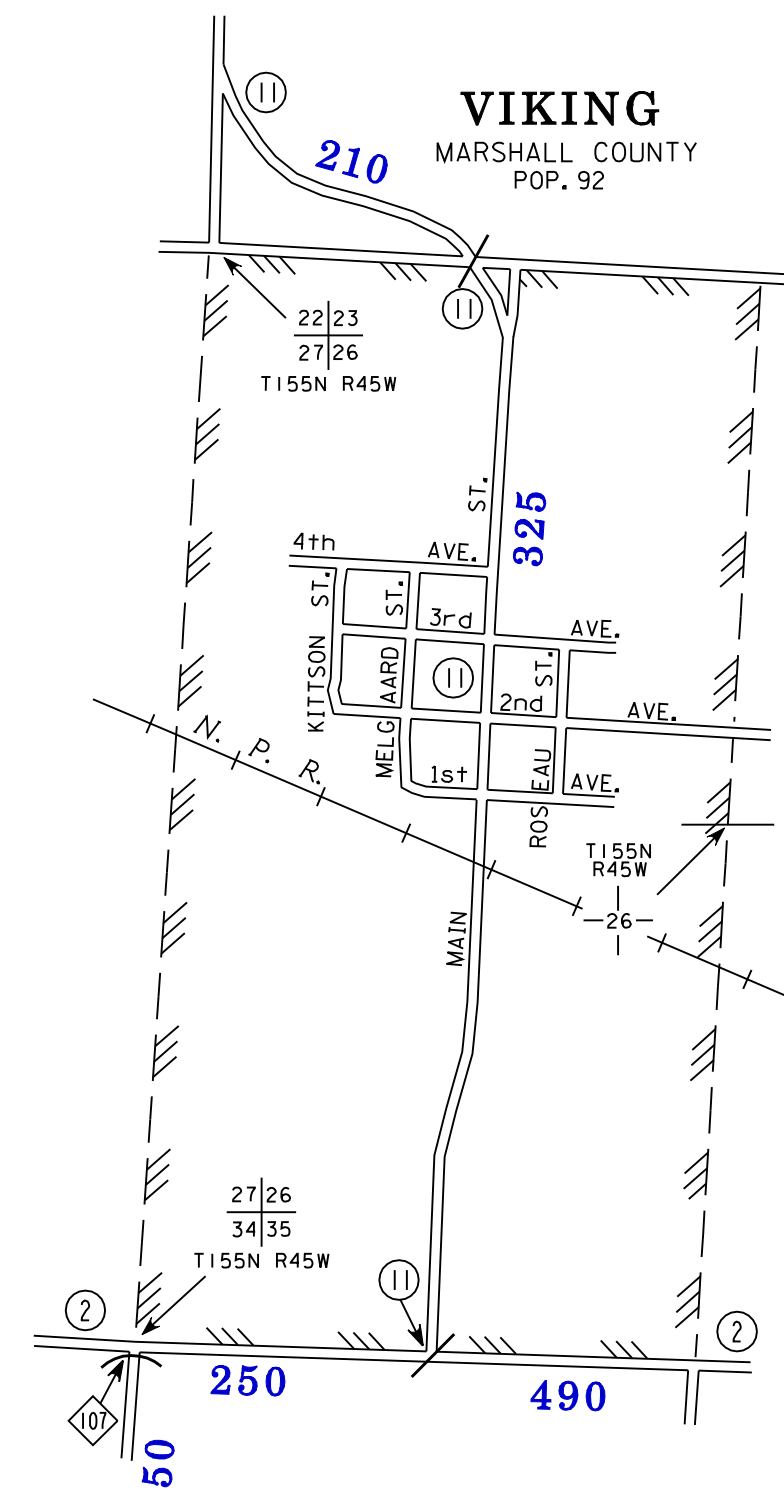


2006  
BASIC DATA - 1975



**LEGEND**

- INTERSTATE TRUNK HIGHWAY..... (I-75)
- U.S. TRUNK HIGHWAY..... (US-75)
- STATE TRUNK HIGHWAY..... (ST-62)
- COUNTY STATE AID HIGHWAY..... (CSA-63)
- COUNTY ROAD..... (CR-64)
- PUBLIC ROAD..... (PR-65)
- PRIVATE ROAD..... (PR-66)
- CORPORATE LIMITS..... (CL-67)

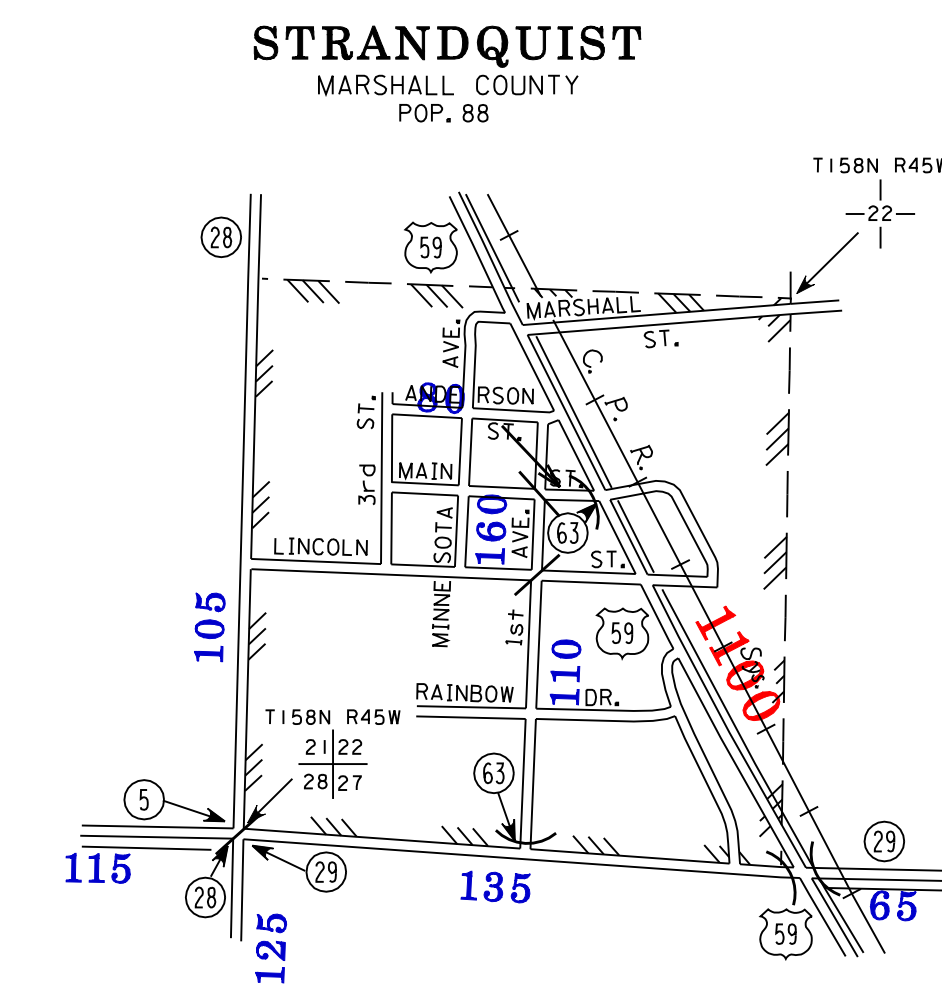
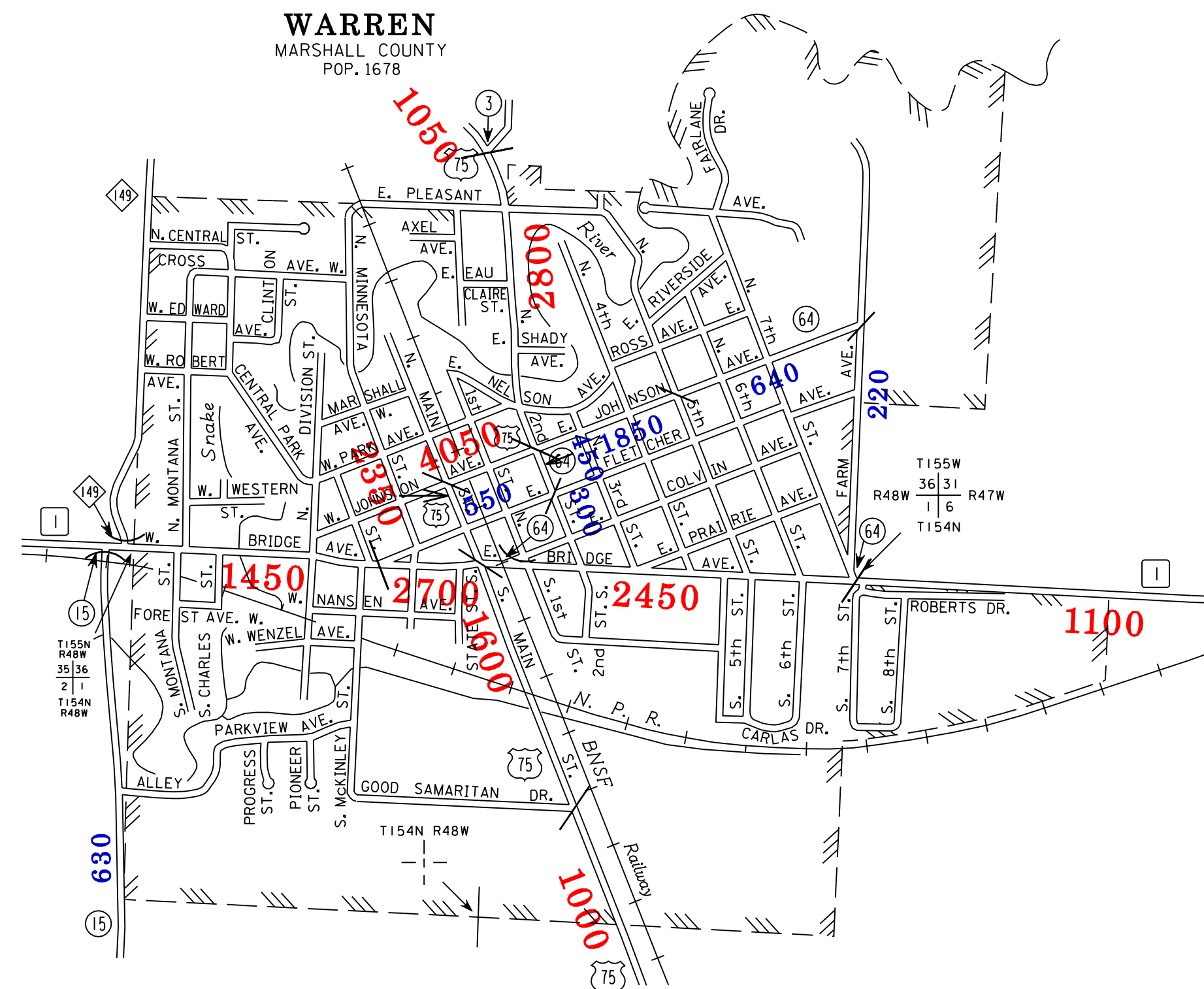
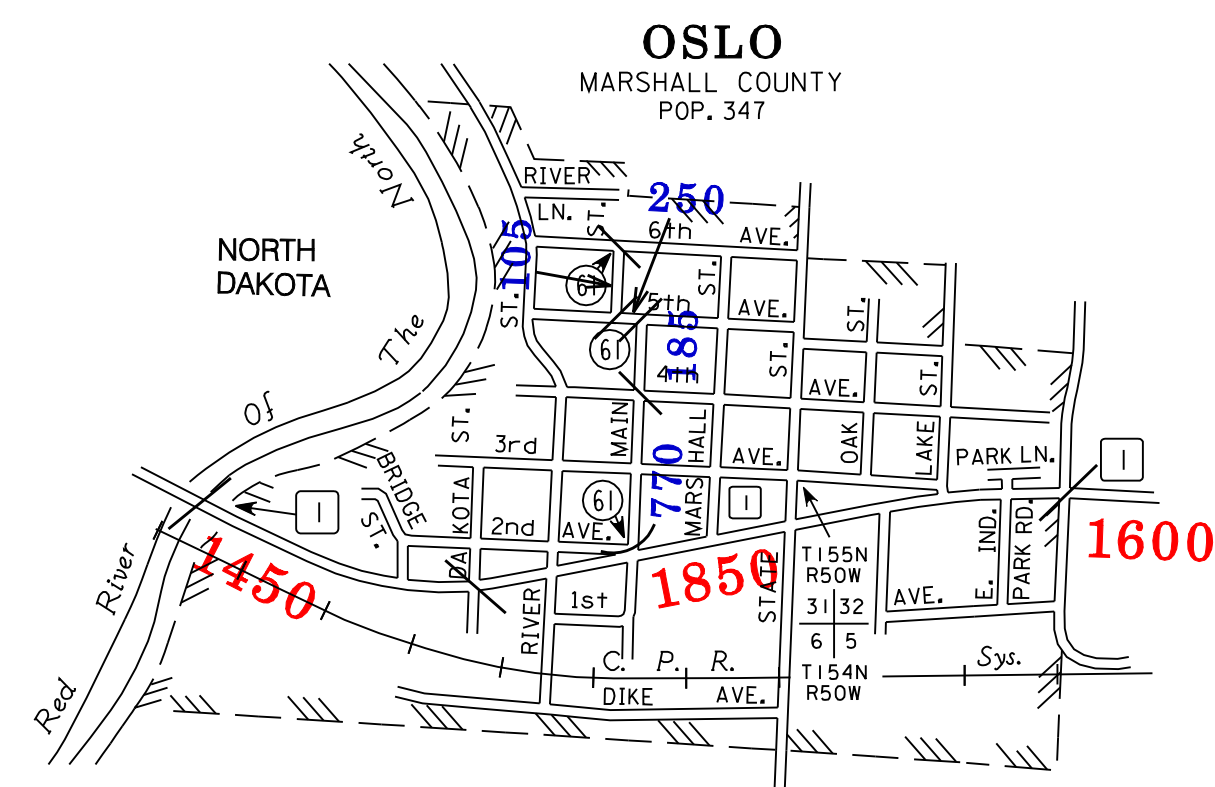


VOLUMES PREPARED BY  
THE OFFICE OF  
TRANSPORTATION DATA & ANALYSIS

NUMERALS INDICATE AVERAGE DAILY  
TRAFFIC VOLUMES ON DESIGNATED ROADS.

TRUNK HIGHWAY ROUTES ARE 2006 A.A.D.T. VOLUMES.  
COUNTY SYSTEM ROADS ARE 2006 A.A.D.T. VOLUMES.

FOR DESIGNATED ROADS :  
/ = SEGMENT ENDPOINT FOR ALL  
ROADS INTERSECTED BY HATCH  
( = SEGMENT ENDPOINT ONLY FOR  
ROAD SEPARATED FROM INTERSECTING  
ROAD BY ARC



- MUNICIPALITIES SHOWN  
ON THIS SHEET
- OSLO
  - STEPHEN
  - STRANDQUIST
  - VIKING
  - WARREN

NOTE: 2000 U.S. CENSUS FIGURES SHOWN FOR ALL MUNICIPALITIES UNLESS OTHERWISE STATED.