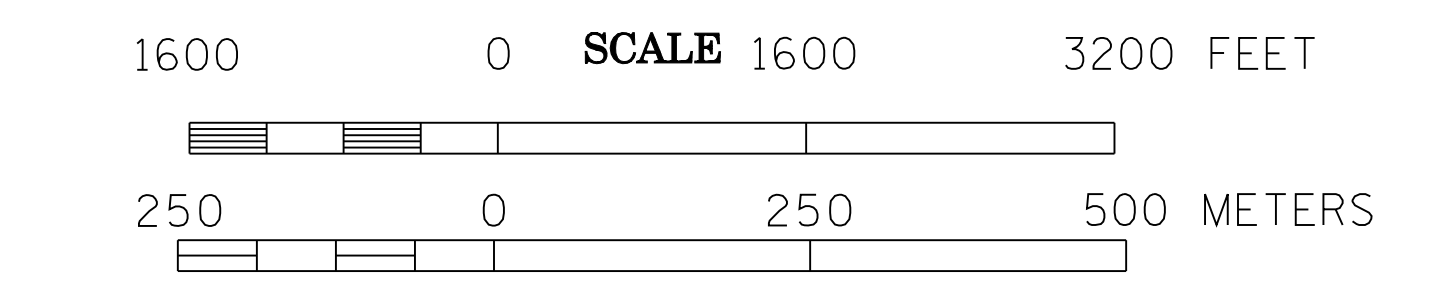


LANCASTER
KITTSOON COUNTY
POP. 363

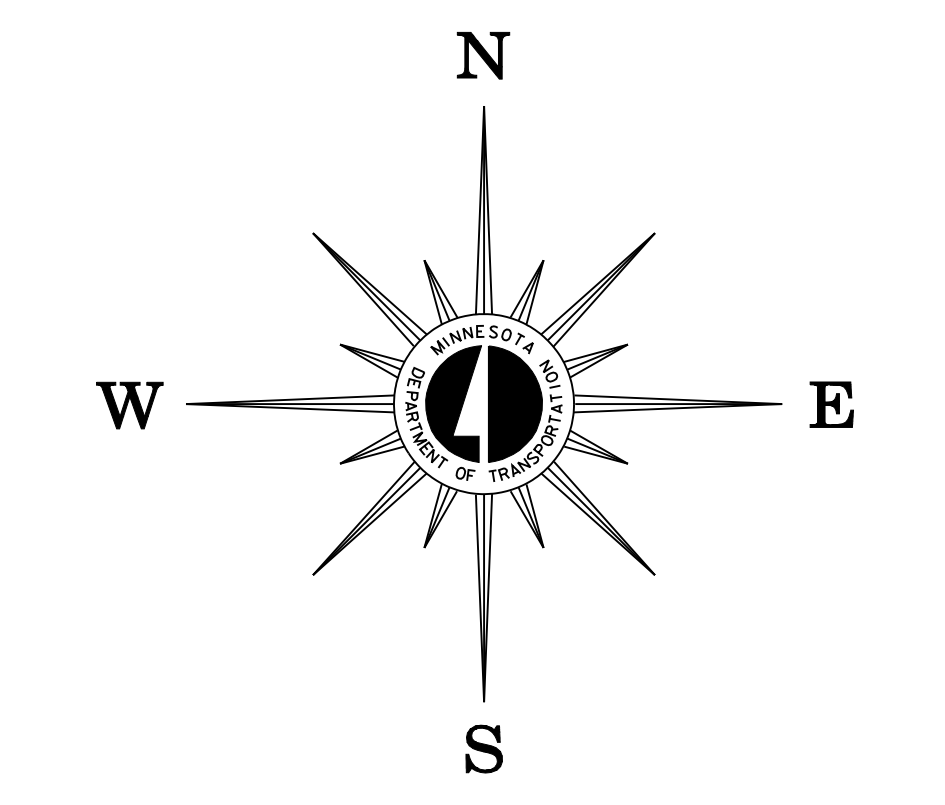
KARLSTAD
KITTSOON COUNTY
POP. 794

2005 TRAFFIC VOLUMES
MUNICIPALITIES OF
KITTSOON CO.

PREPARED BY THE
MINNESOTA DEPARTMENT OF TRANSPORTATION
OFFICE OF TRANSPORTATION DATA & ANALYSIS
IN COOPERATION WITH
U.S. DEPARTMENT OF TRANSPORTATION
FEDERAL HIGHWAY ADMINISTRATION

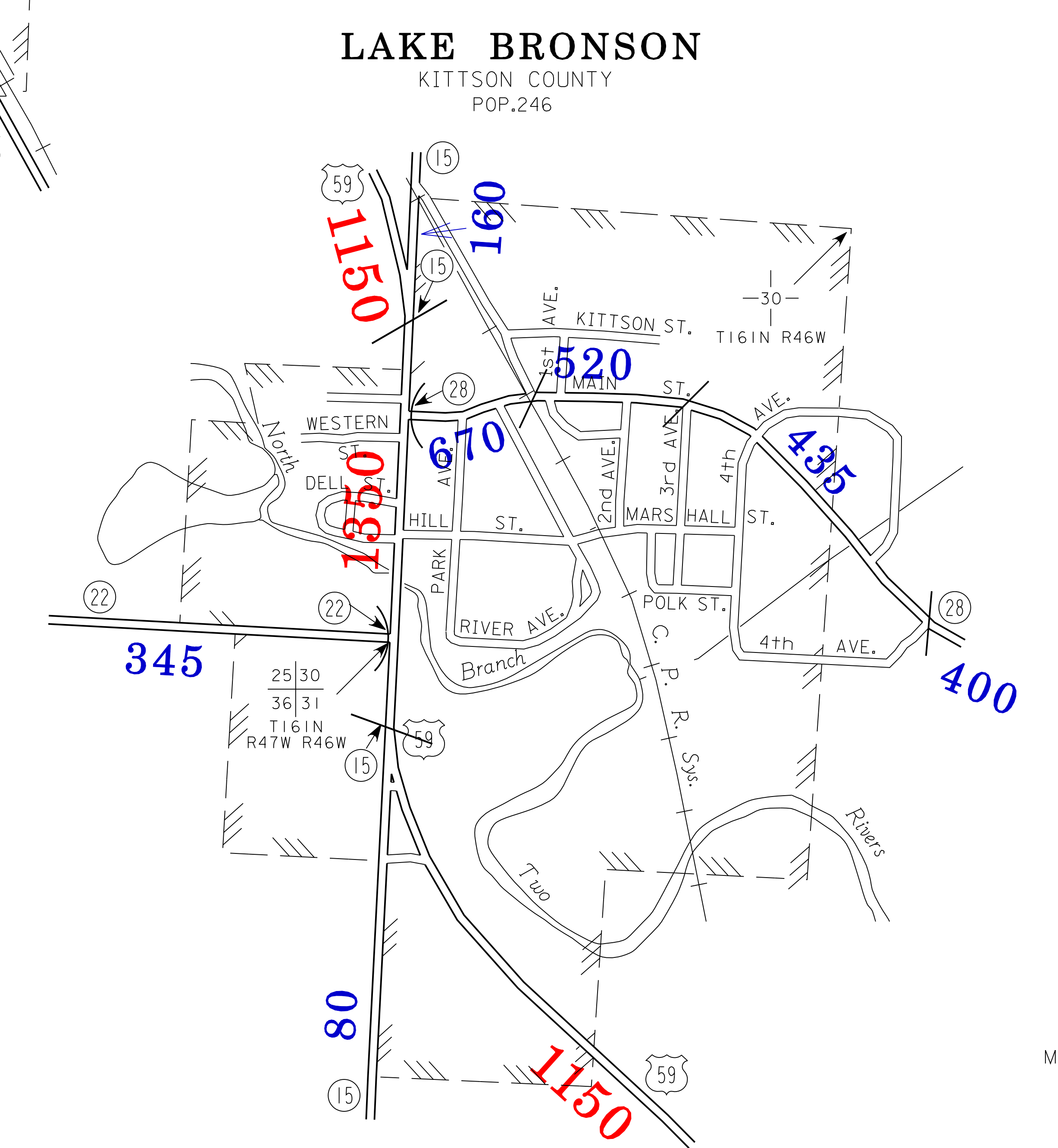
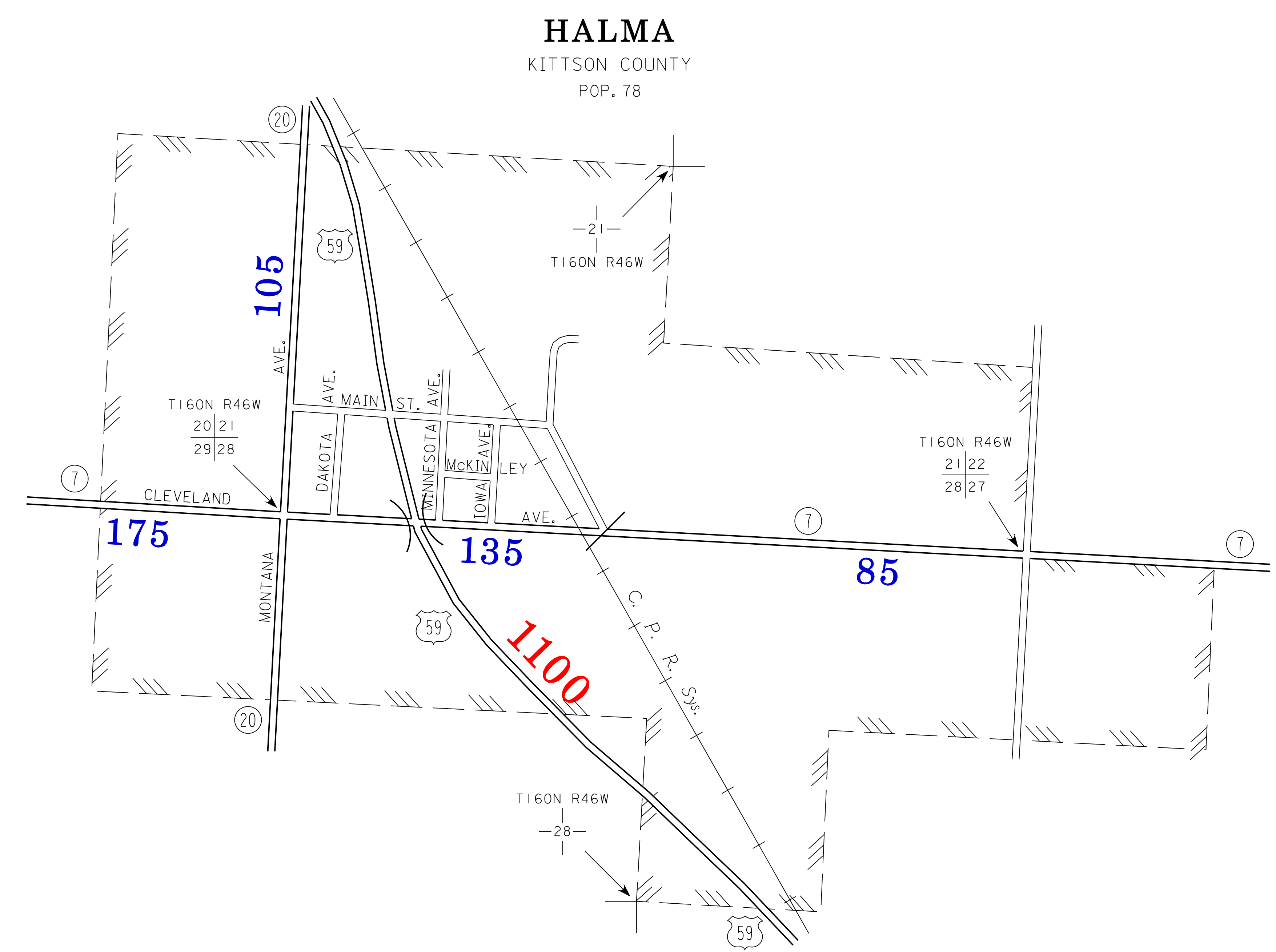
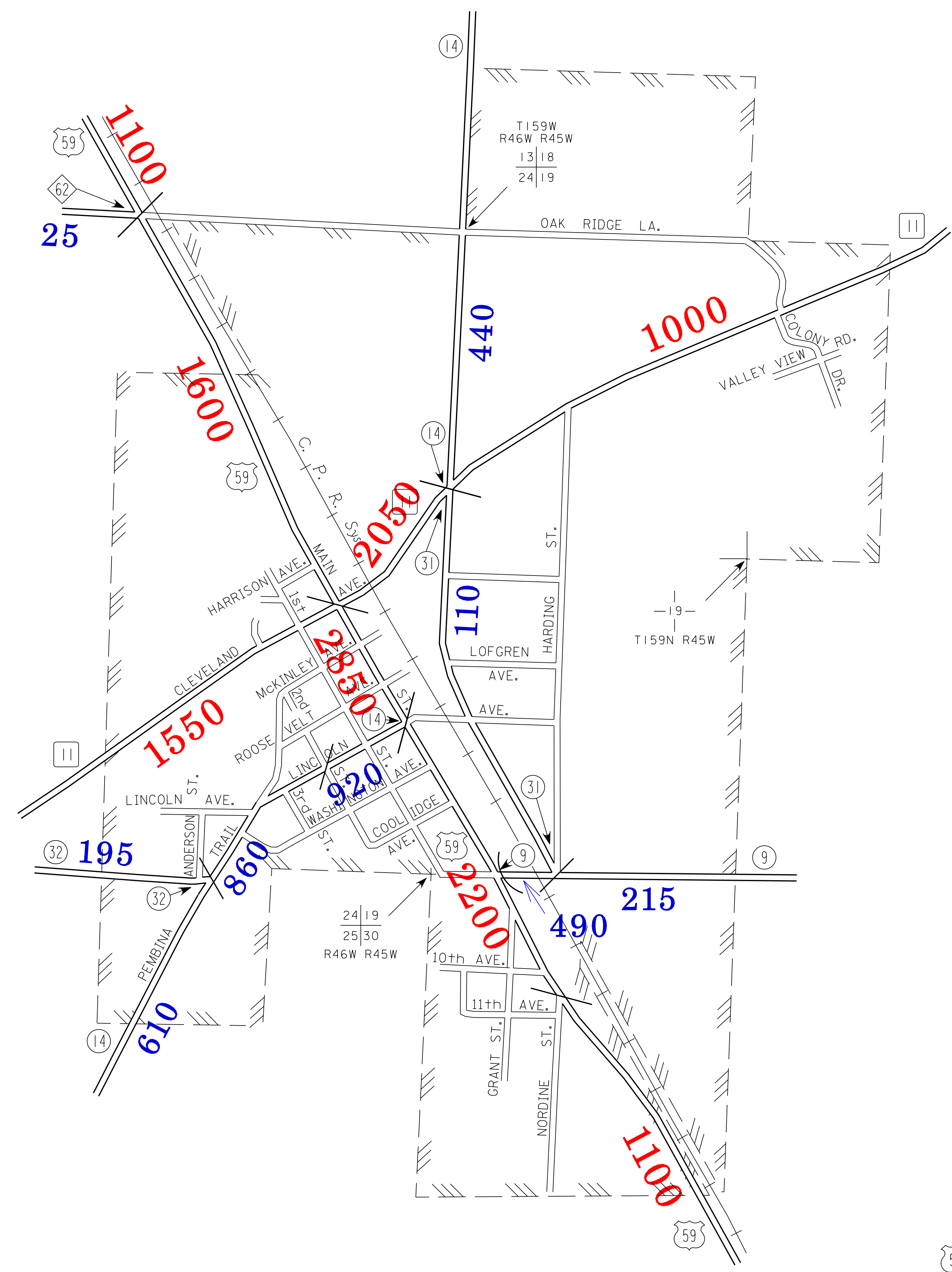
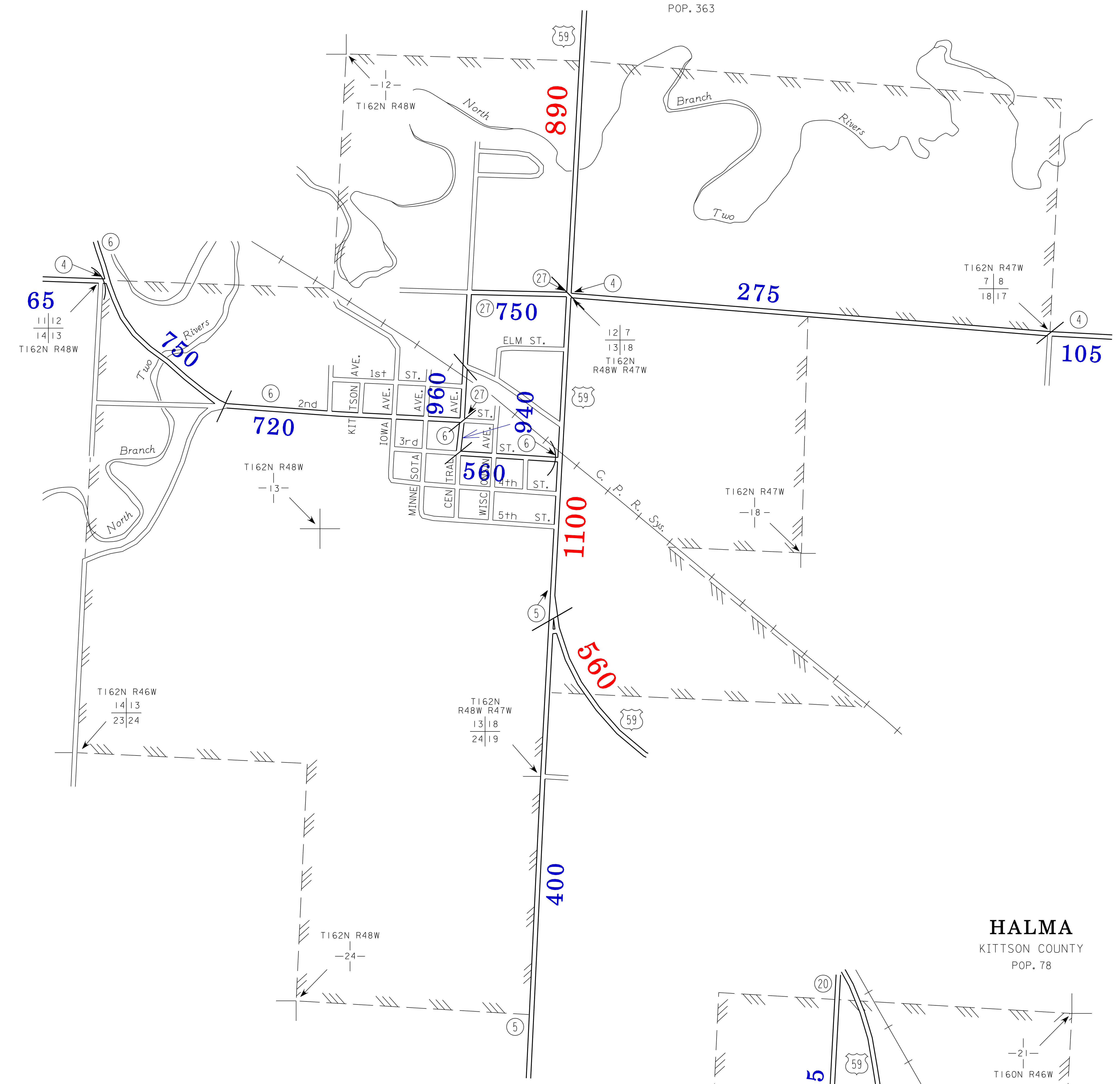


2005
BASIC DATA - 1977



LEGEND

- INTERSTATE TRUNK HIGHWAY..... (55)
- U. S. TRUNK HIGHWAY..... (10)
- STATE TRUNK HIGHWAY..... (5)
- COUNTY STATE AID HIGHWAY..... (2)
- COUNTY ROAD..... (1)
- PUBLIC ROAD.....
- PRIVATE ROAD.....
- CORPORATE LIMITS.....



VOLUMES PREPARED BY
THE OFFICE OF
TRANSPORTATION DATA & ANALYSIS

NUMERALS INDICATE AVERAGE DAILY
TRAFFIC VOLUMES ON DESIGNATED ROADS.

TRUNK HIGHWAY ROUTES ARE 2004 A.A.D.T. VOLUMES.
COUNTY SYSTEM ROADS ARE 2005 A.A.D.T. VOLUMES.

FOR DESIGNATED ROADS :
/ = SEGMENT ENDPOINT FOR ALL
ROADS INTERSECTED BY HATCH
(= SEGMENT ENDPOINT ONLY FOR
ROAD SEPARATED FROM INTERSECTING
ROAD BY ARC

MUNICIPALITIES SHOWN
ON THIS SHEET
HALMA
KARLSTAD
LAKE BRONSON
LANCASTER

NOTE: 2000 U.S. CENSUS FIGURES SHOWN FOR ALL MUNICIPALITIES UNLESS OTHERWISE STATED.