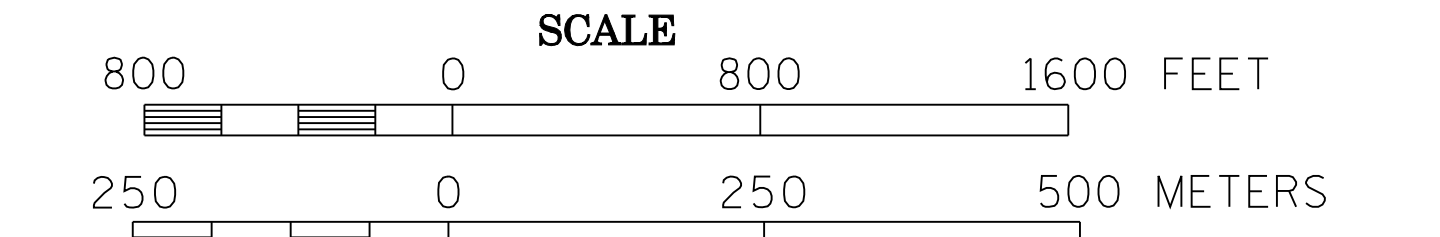
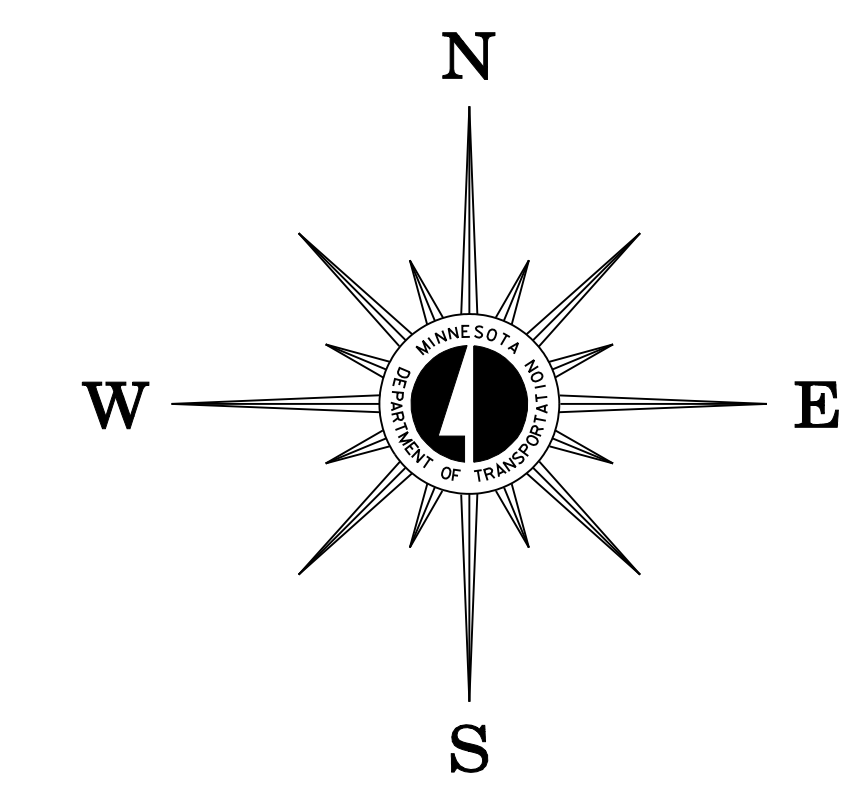


2004 TRAFFIC VOLUMES MUNICIPALITIES OF LAC QUI PARLE CO.

PREPARED BY THE
MINNESOTA DEPARTMENT OF TRANSPORTATION
OFFICE OF TRANSPORTATION DATA & ANALYSIS
IN COOPERATION WITH
U.S. DEPARTMENT OF TRANSPORTATION
FEDERAL HIGHWAY ADMINISTRATION



2004
BASIC DATA - 1977



LEGEND

- INTERSTATE TRUNK HIGHWAY..... (I-95)
- U.S. TRUNK HIGHWAY..... (US-10)
- STATE TRUNK HIGHWAY..... (ST-55)
- COUNTY STATE AID HIGHWAY..... (CSA-2)
- COUNTY ROAD..... (C-4)
- PUBLIC ROAD..... (P-1)
- PRIVATE ROAD..... (PR-1)
- CORPORATE LIMITS..... (---)

VOLUMES PREPARED BY
THE OFFICE OF
TRANSPORTATION DATA & ANALYSIS

NUMERALS INDICATE AVERAGE DAILY
TRAFFIC VOLUMES ON DESIGNATED ROADS.

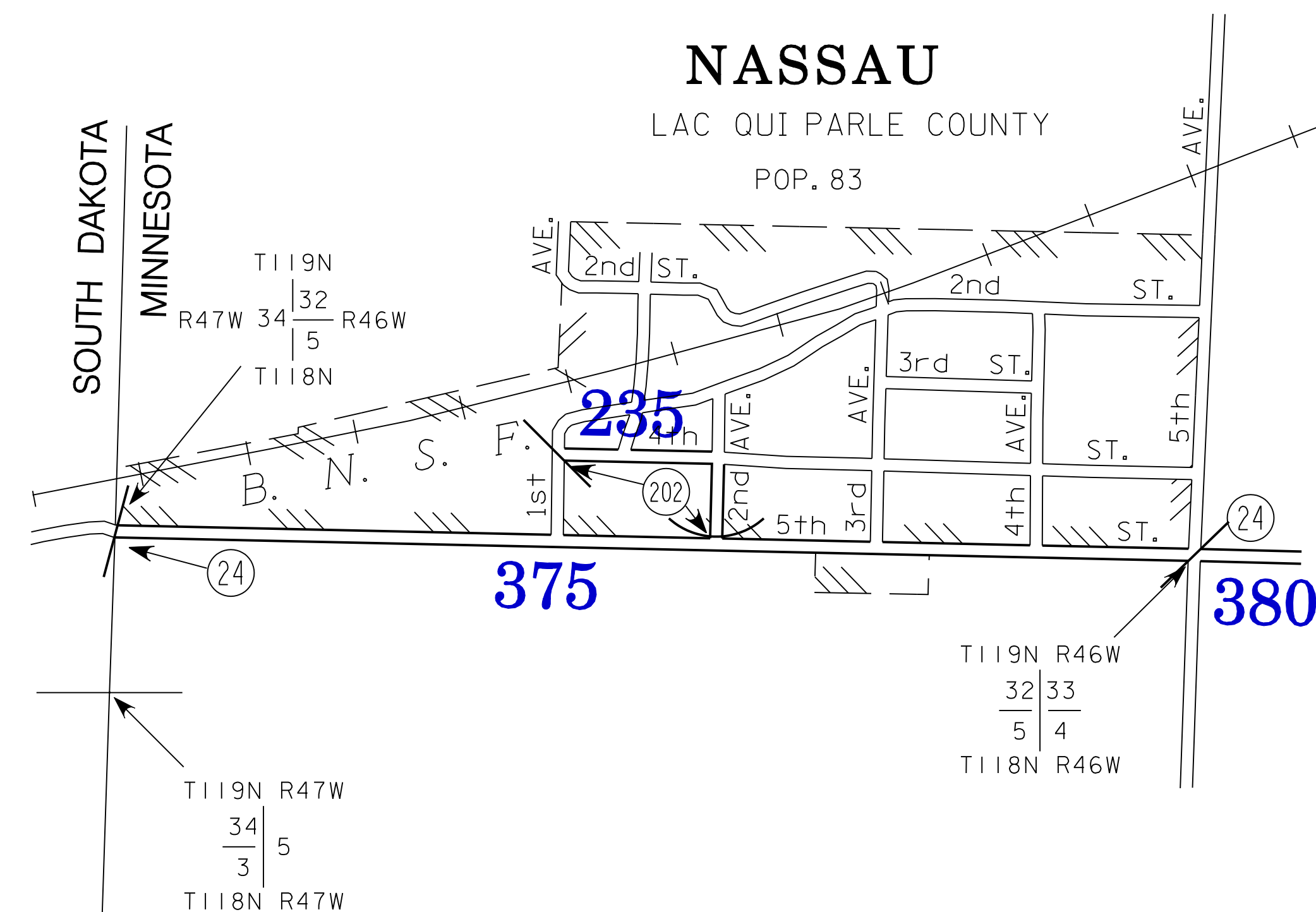
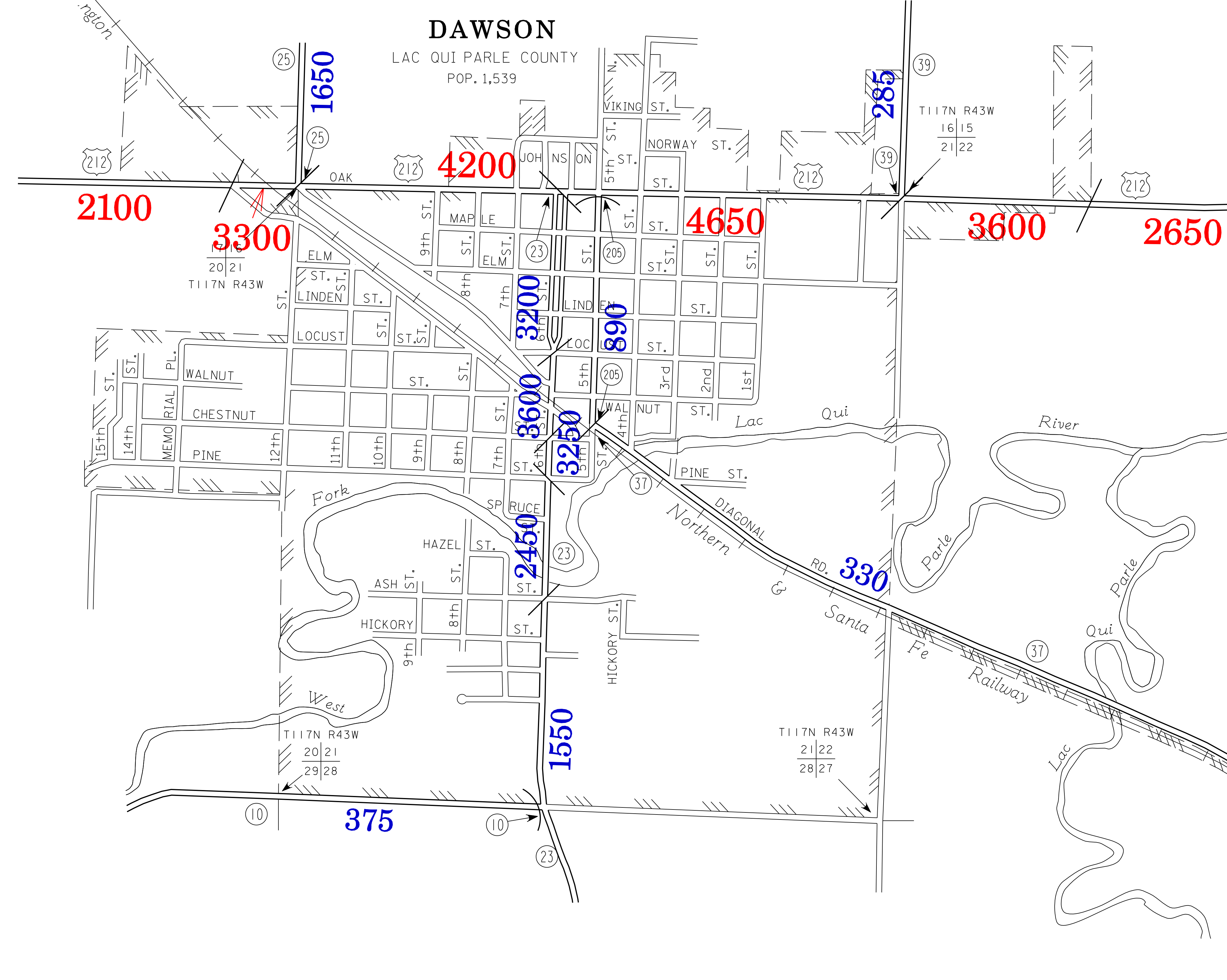
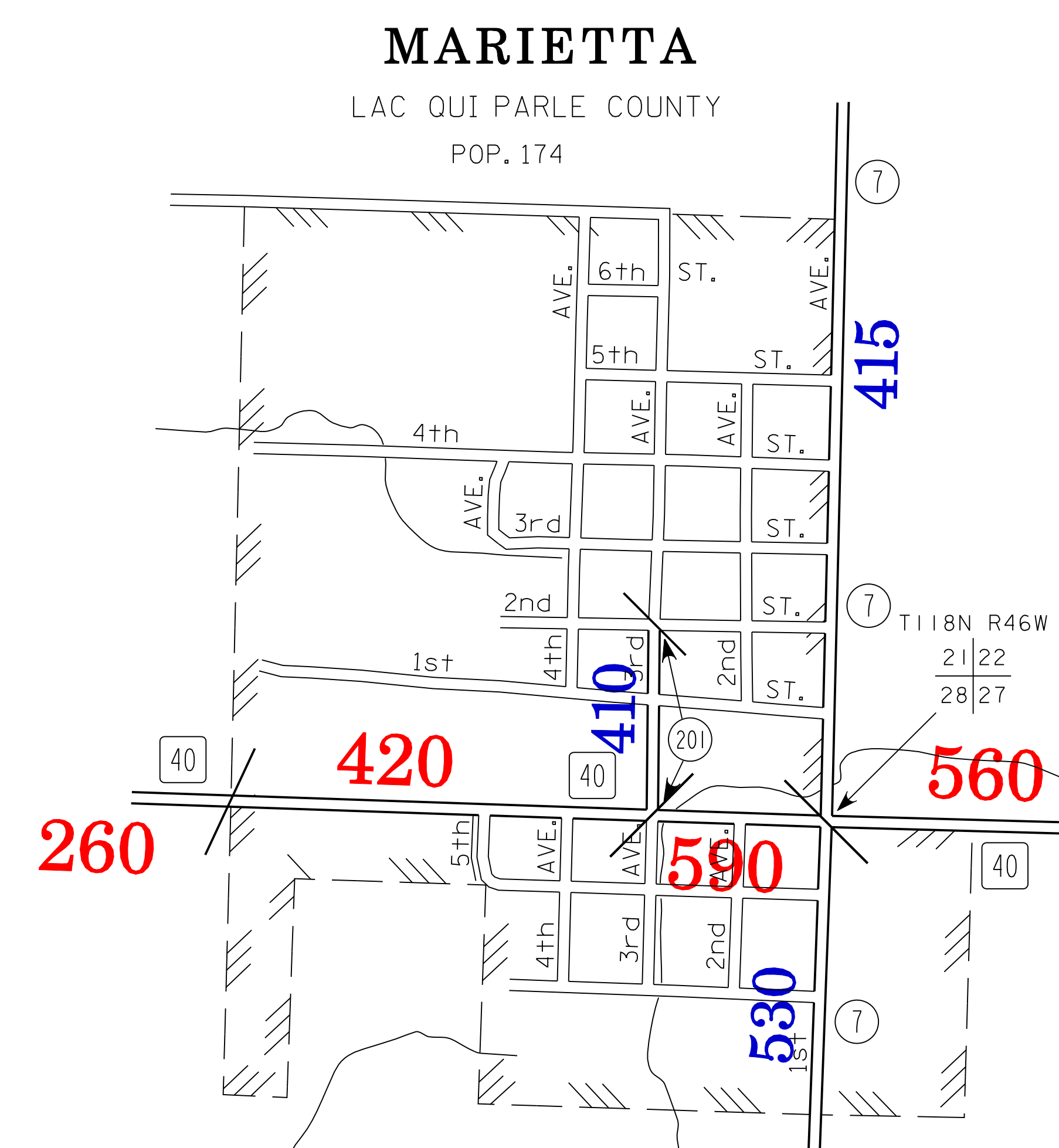
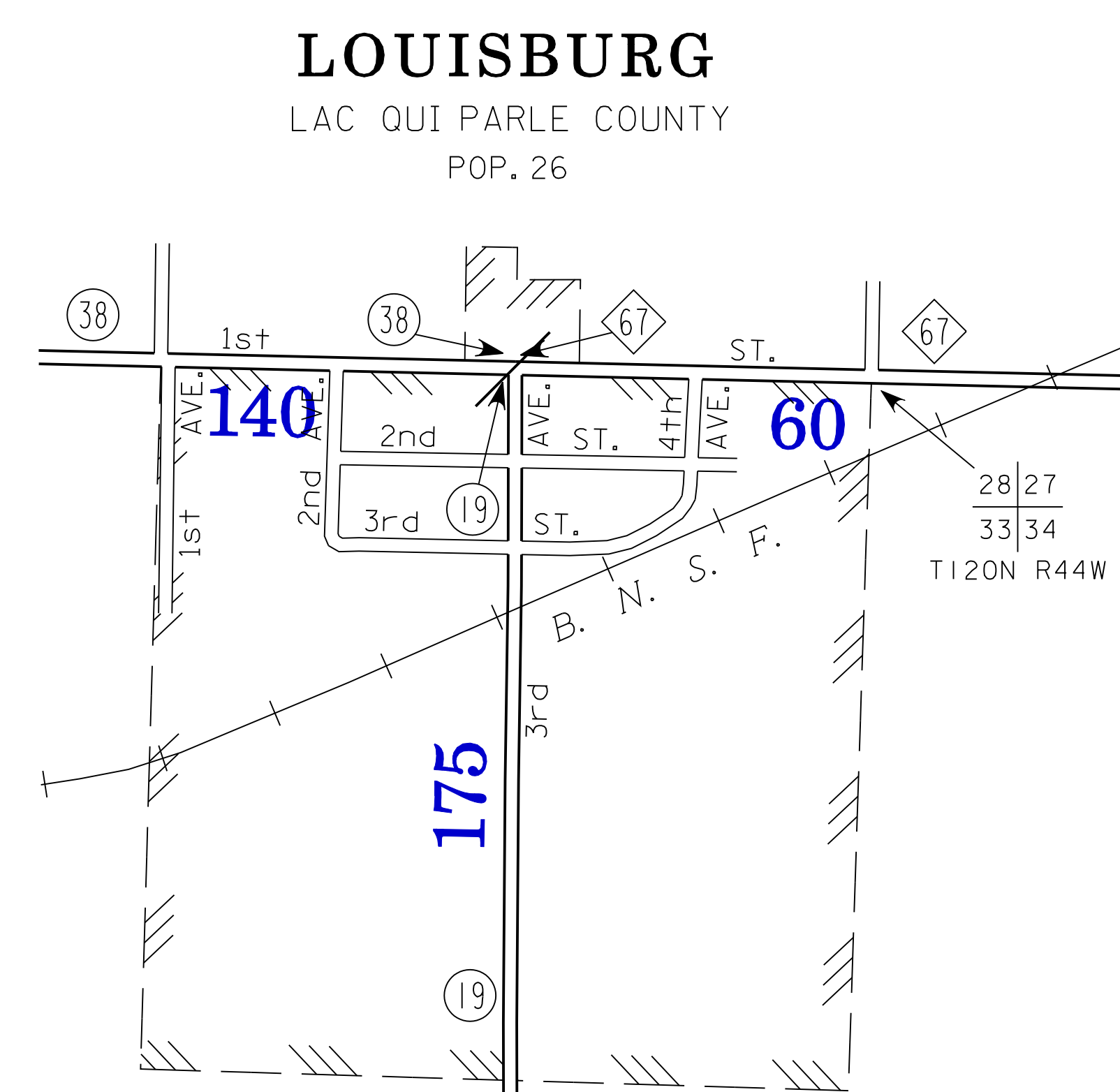
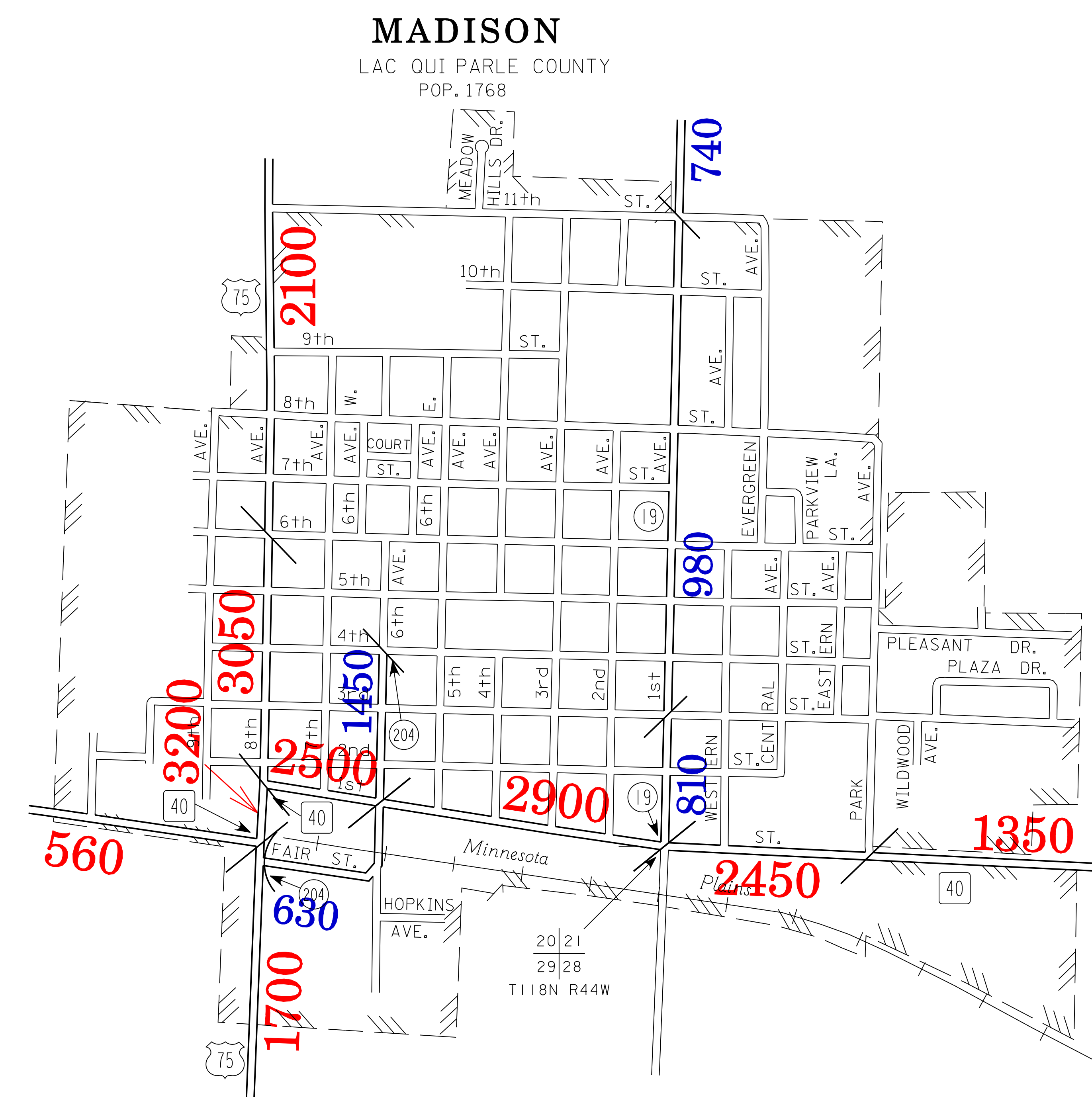
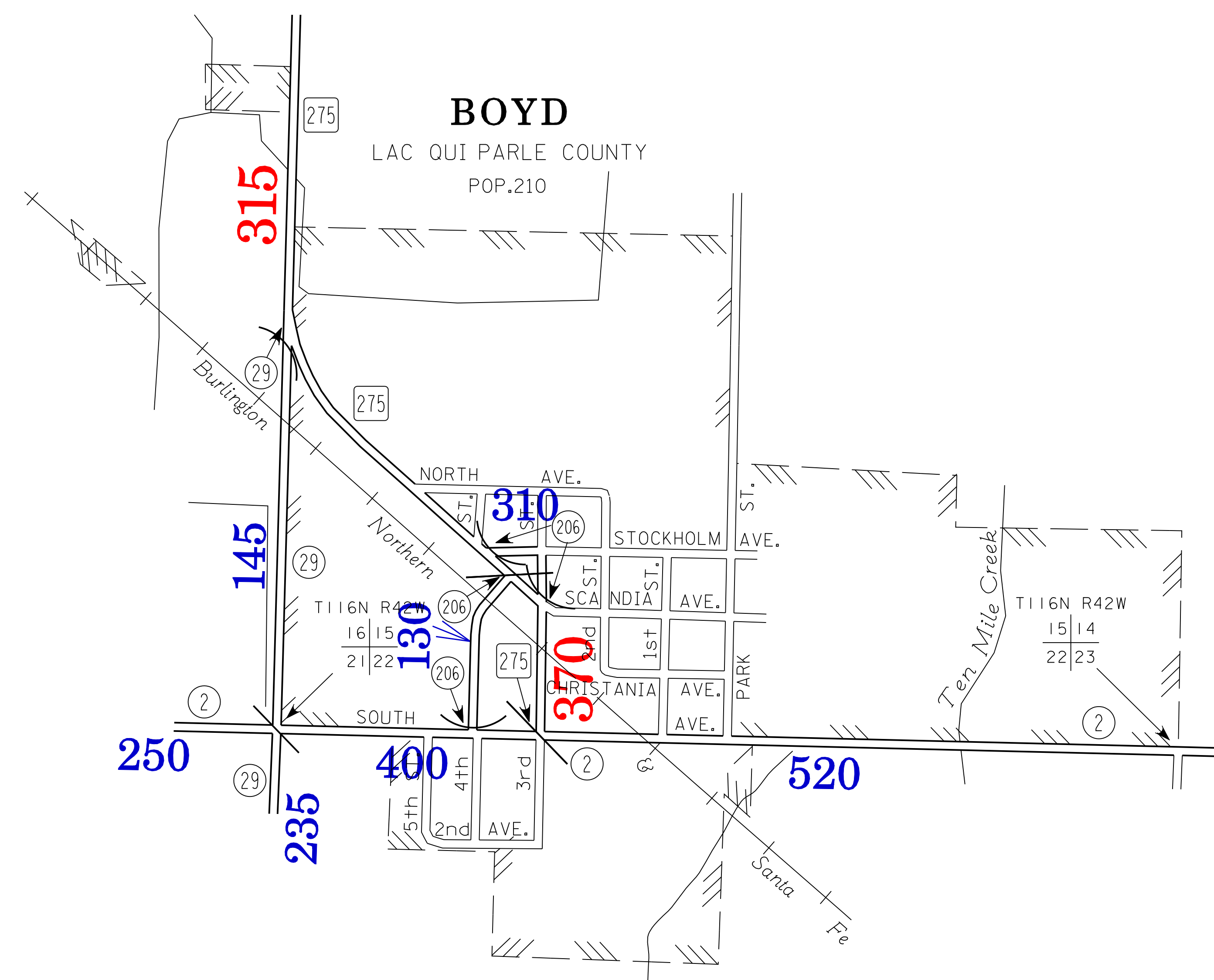
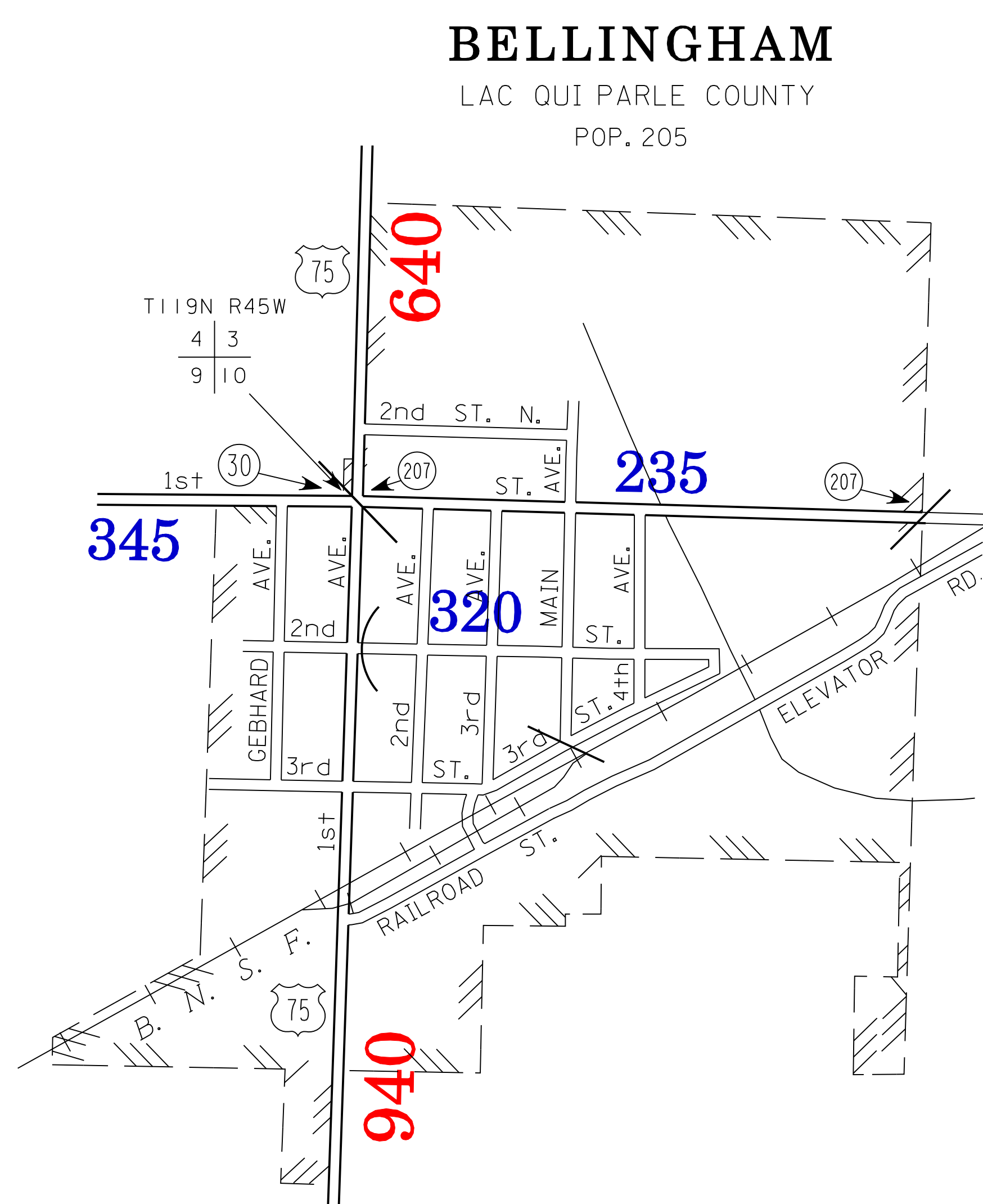
TRUNK HIGHWAY ROUTES ARE 2004 A.A.D.T. VOLUMES.
COUNTY SYSTEM ROADS ARE 2004 A.A.D.T. VOLUMES.

FOR DESIGNATED ROADS :
/ = SEGMENT ENDPOINT FOR ALL
ROADS INTERSECTED BY HATCH
(= SEGMENT ENDPOINT ONLY FOR
ROAD SEPARATED FROM INTERSECTING
ROAD BY ARC

MUNICIPALITIES SHOWN
ON THIS SHEET

- BELLINGHAM
- BOYD
- DAWSON
- LOUISBURG
- MADISON
- MARIETTA
- NASSAU

NOTE: 2000 U.S. CENSUS FIGURES SHOWN FOR ALL MUNICIPALITIES UNLESS OTHERWISE STATED.



940