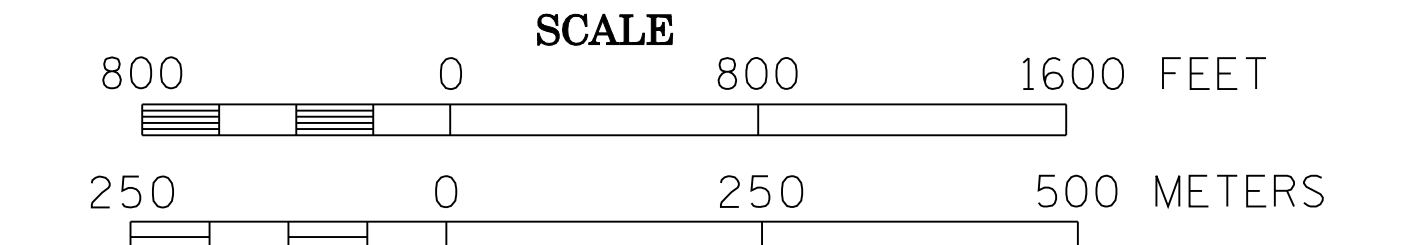
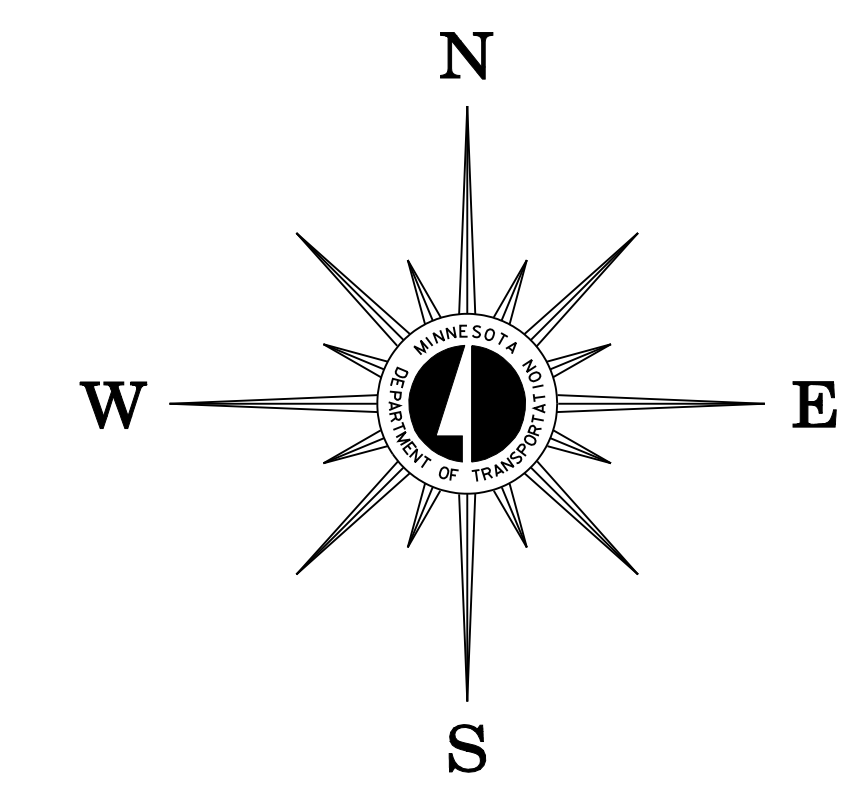


2004 TRAFFIC VOLUMES
MUNICIPALITIES OF
COTTONWOOD CO.

PREPARED BY THE
MINNESOTA DEPARTMENT OF TRANSPORTATION
OFFICE OF TRANSPORTATION DATA & ANALYSIS
IN COOPERATION WITH
U.S. DEPARTMENT OF TRANSPORTATION
FEDERAL HIGHWAY ADMINISTRATION



2004
BASIC DATA - 1977



LEGEND

- INTERSTATE TRUNK HIGHWAY..... (I-95)
- U.S. TRUNK HIGHWAY..... (10)
- STATE TRUNK HIGHWAY..... (55)
- COUNTY STATE AID HIGHWAY..... (2)
- COUNTY ROAD..... (44)
- PUBLIC ROAD..... (30)
- PRIVATE ROAD..... (31)
- CORPORATE LIMITS.....

VOLUMES PREPARED BY
THE OFFICE OF
TRANSPORTATION DATA & ANALYSIS

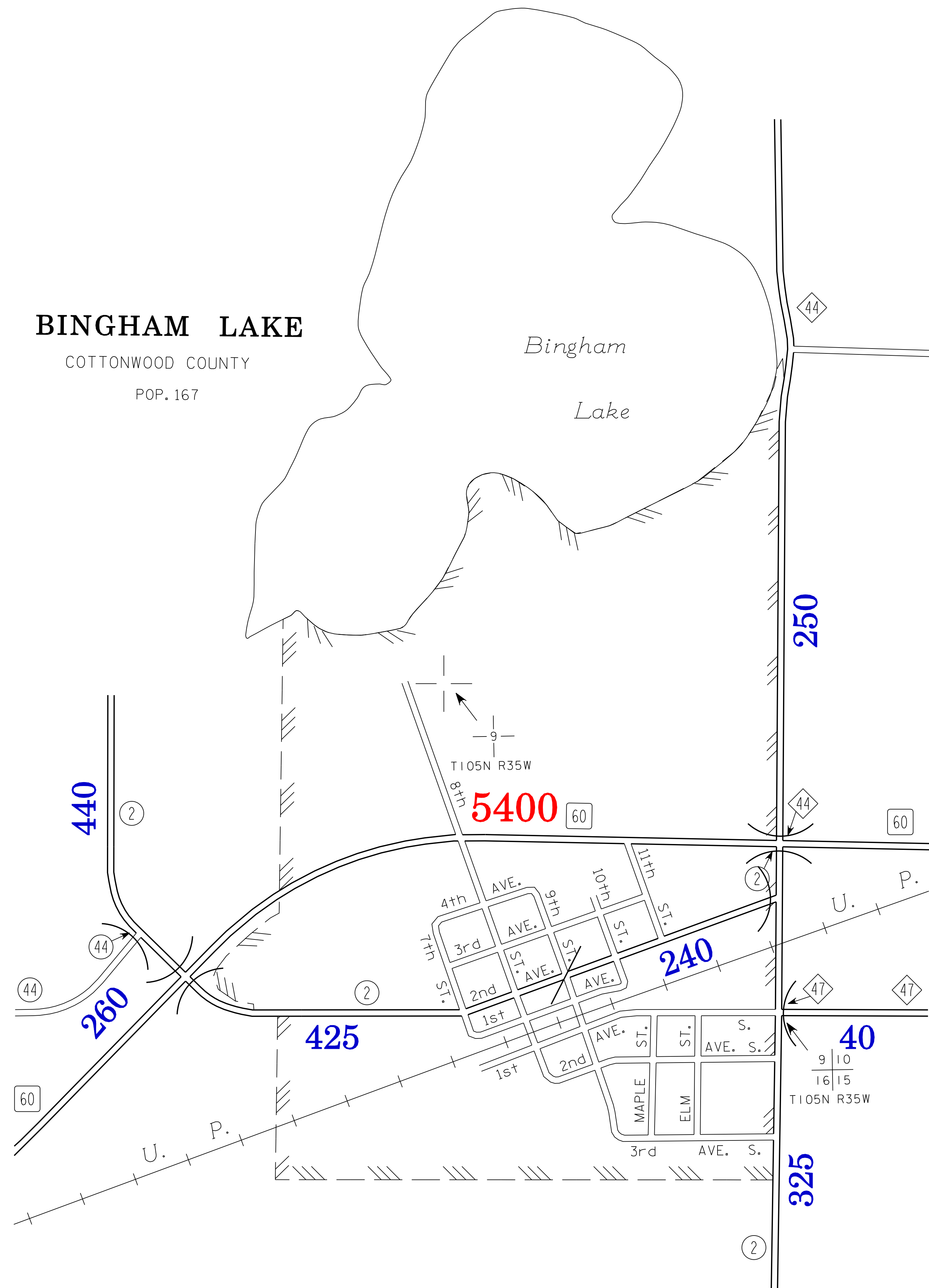
NUMERALS INDICATE AVERAGE DAILY
TRAFFIC VOLUMES ON DESIGNATED ROADS.

TRUNK HIGHWAY ROUTES ARE 2004 A.A.D.T. VOLUMES.
COUNTY SYSTEM ROADS ARE 2004 A.A.D.T. VOLUMES.

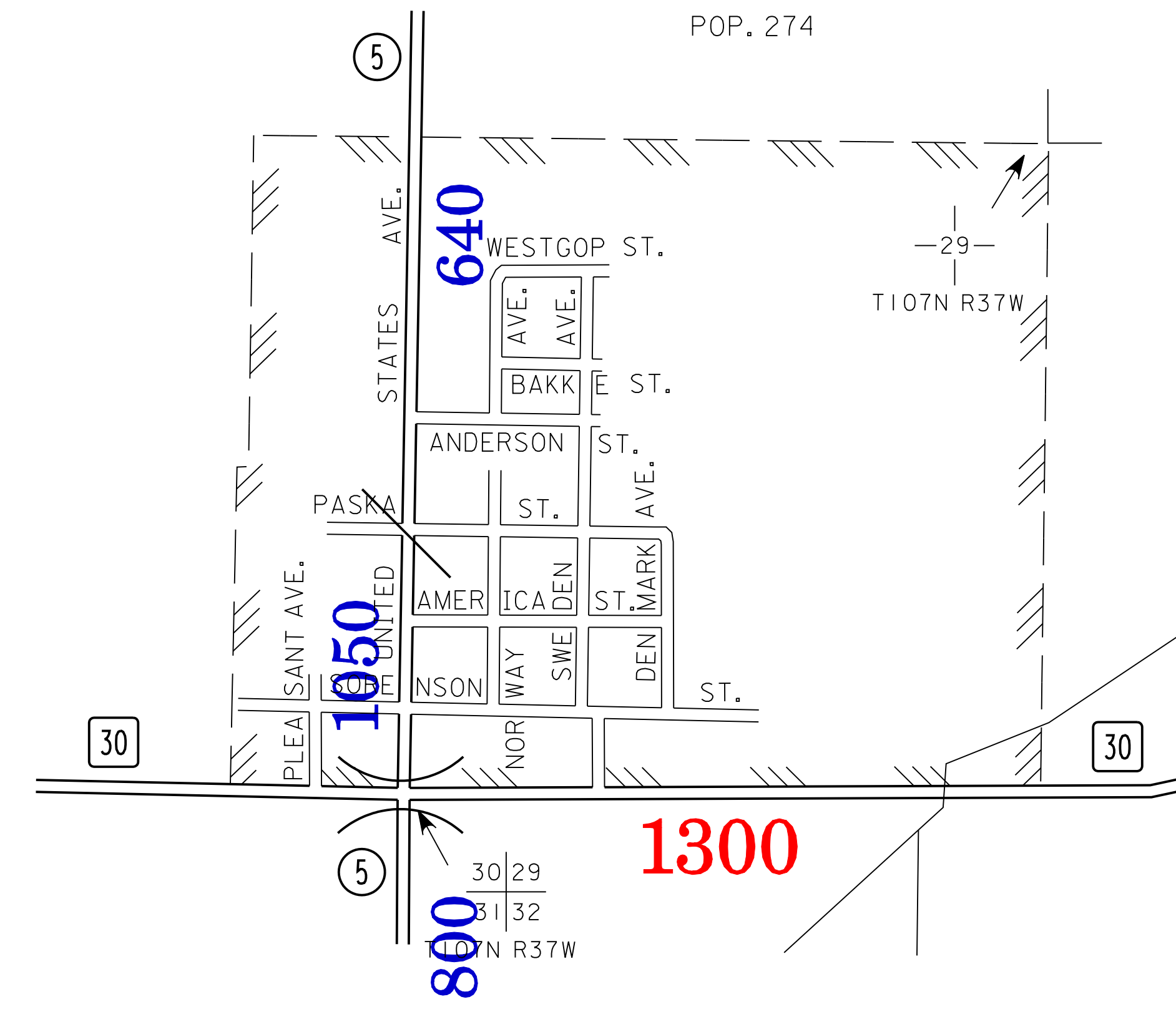
FOR DESIGNATED ROADS :
/ = SEGMENT ENDPOINT FOR ALL
ROADS INTERSECTED BY HATCH
(= SEGMENT ENDPOINT ONLY FOR
ROAD SEPARATED FROM INTERSECTING
ROAD BY ARC

MUNICIPALITIES SHOWN
ON THIS SHEET
BINGHAM LAKE
JEFFERS
MOUNTAIN LAKE
STORDEN
WESTBROOK

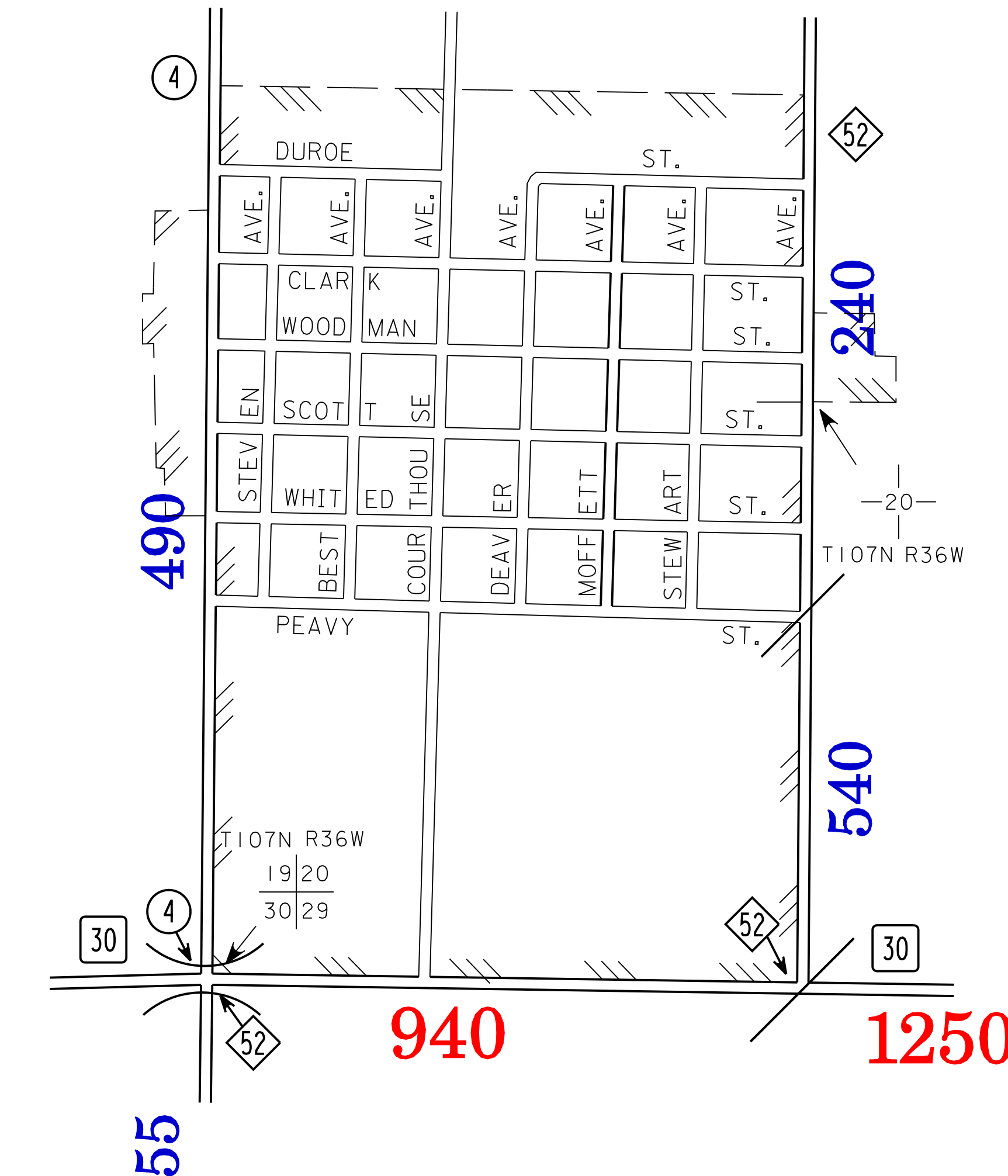
BINGHAM LAKE
COTTONWOOD COUNTY
POP. 167



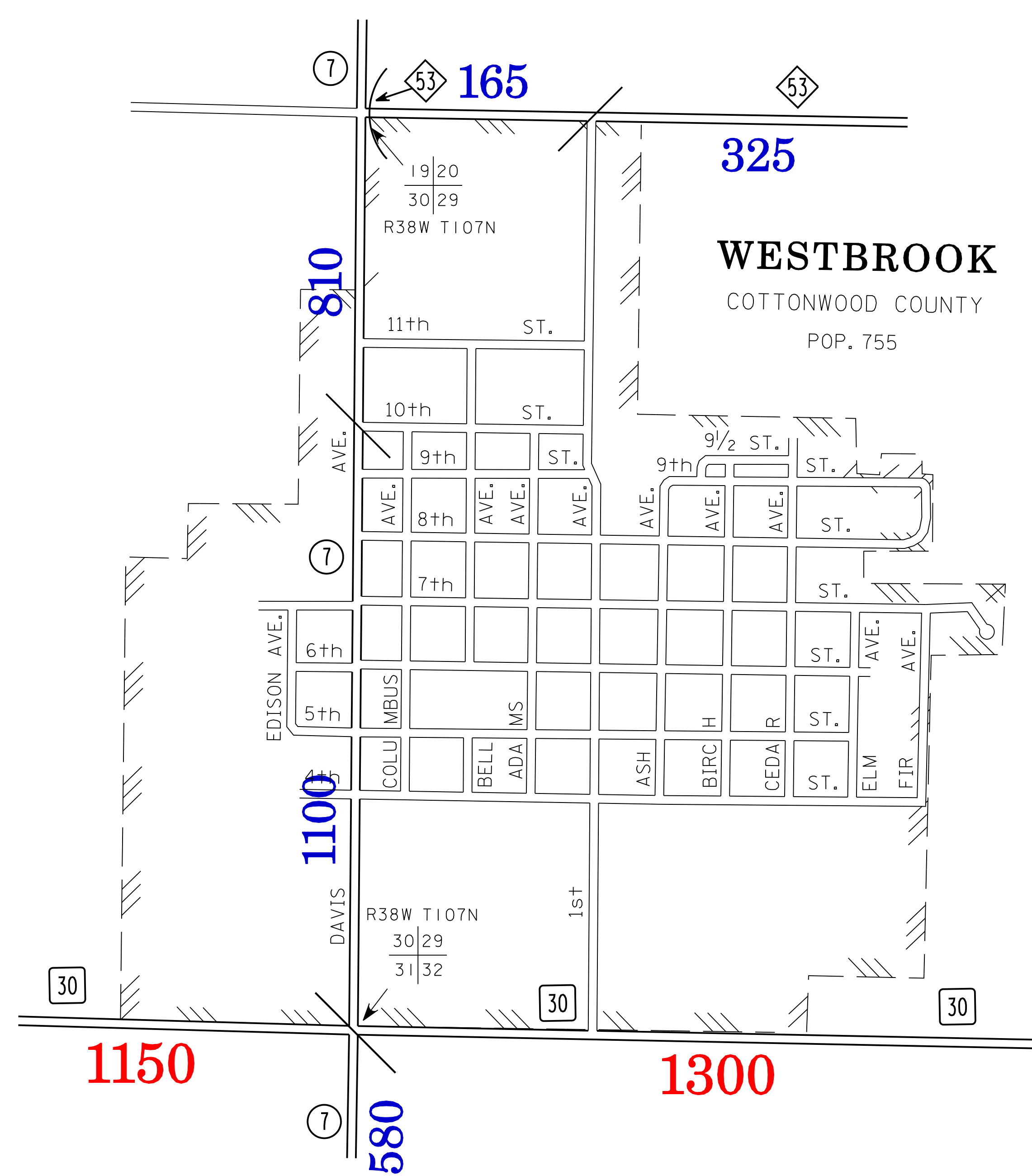
STORDEN
COTTONWOOD COUNTY
POP. 274



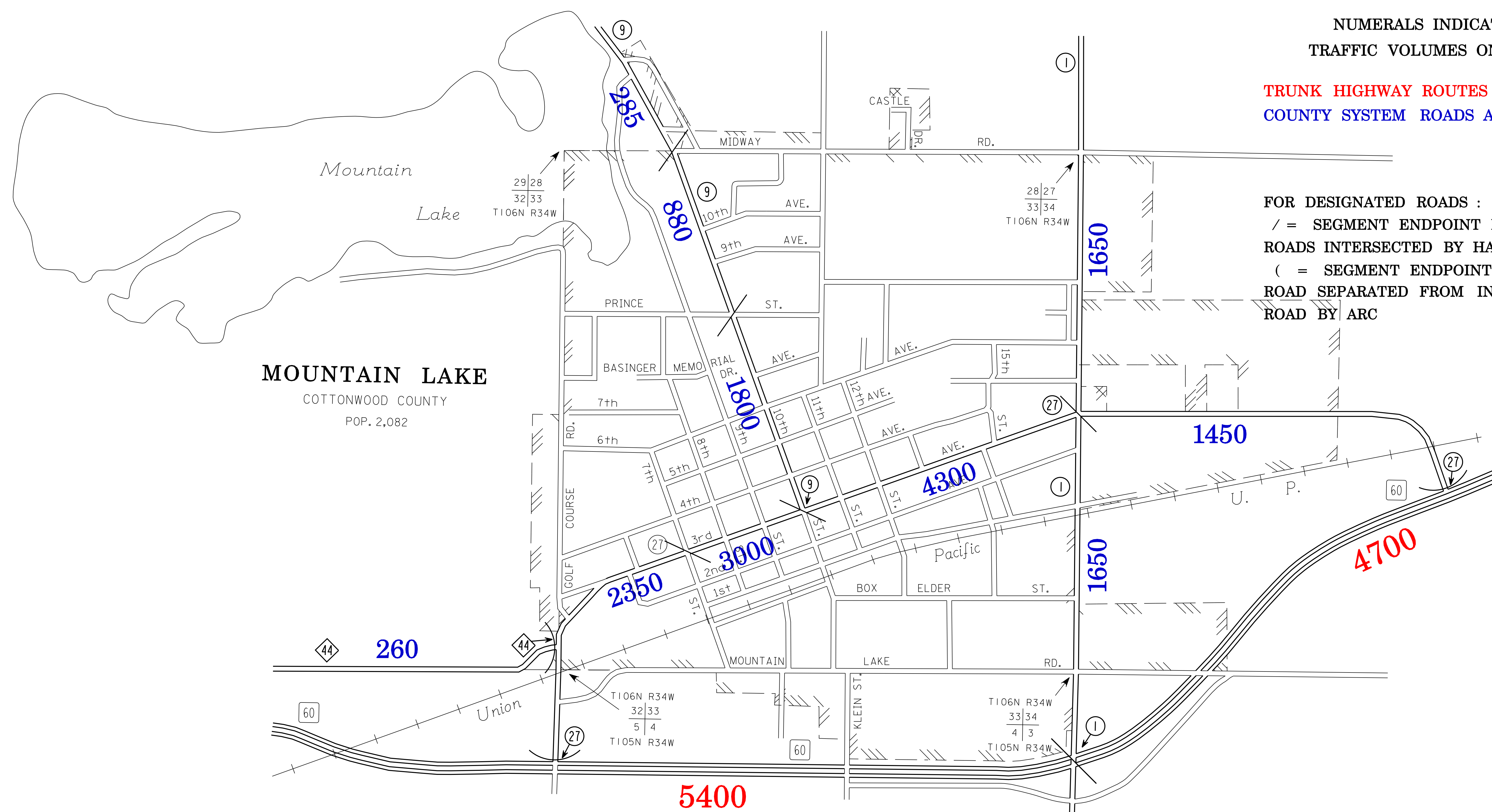
JEFFERS
COTTONWOOD COUNTY
POP. 396



WESTBROOK
COTTONWOOD COUNTY
POP. 755



MOUNTAIN LAKE
COTTONWOOD COUNTY
POP. 2,082



NOTE: 2000 U.S. CENSUS FIGURES SHOWN FOR ALL MUNICIPALITIES UNLESS OTHERWISE STATED.