

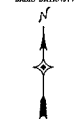
2004 TRAFFIC VOLUMES

MUNICIPALITIES OF
BECKER CO.

PREPARED BY THE
MINNESOTA DEPARTMENT OF TRANSPORTATION
TECHNICAL SERVICES DIVISION
IN COOPERATION WITH THE
U.S. DEPARTMENT OF TRANSPORTATION
FEDERAL HIGHWAY ADMINISTRATION

SCALE 800' 0 800' 1600'

1999
BASIC DATA 977



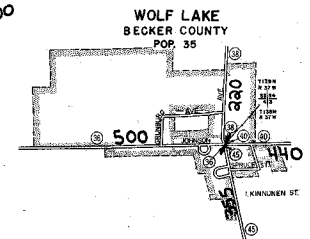
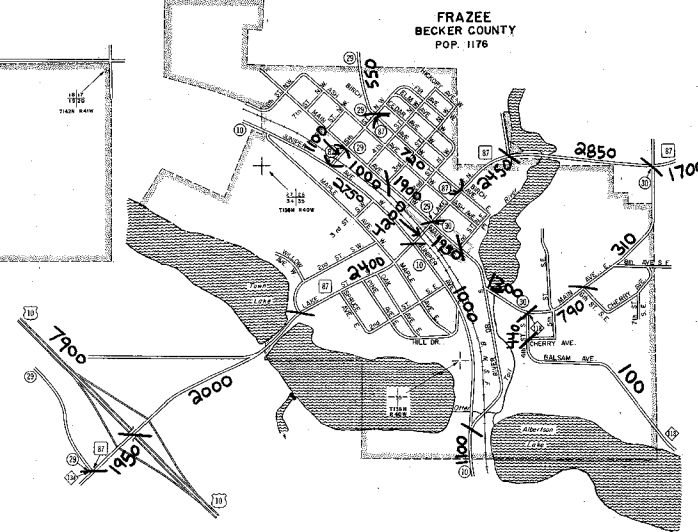
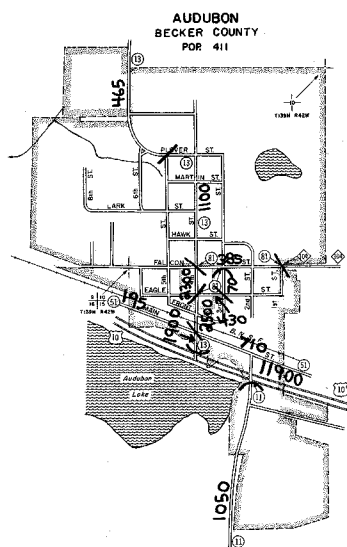
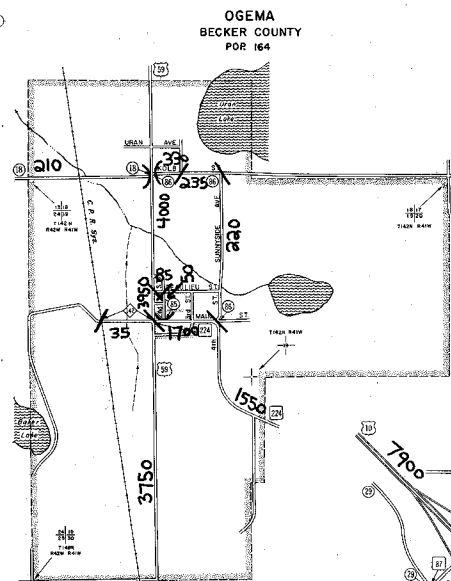
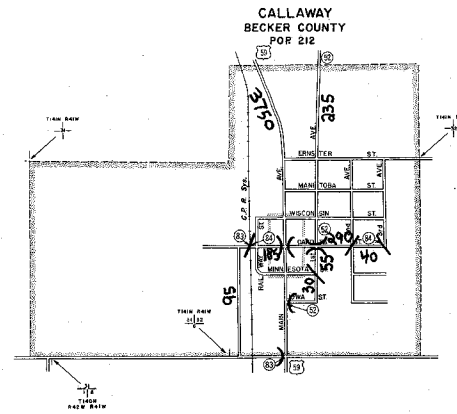
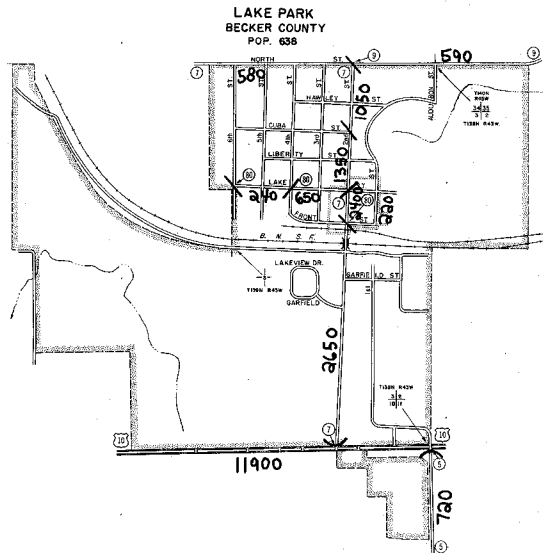
LEGEND

- INTERSTATE THRU HIGHWAY (I-95)
- U.S. NUMBERED TRUNK HIGHWAY (15)
- STATE NUMBERED TRUNK HIGHWAY (16)
- COUNTY STATE AID HIGHWAY (17)
- COUNTY ROAD (18)
- COUNTY STATE AID HIGHWAY IN ADJACING COUNTY (19)
- COUNTY ROAD IN ADJACING COUNTY (20)
- COORDINATE LIMITS (21)
- CENTRAL BUSINESS DISTRICT BOUNDARY (22)

VOLUMES PREPARED BY
THE OFFICE OF
TRANSPORTATION DATA & ANALYSIS

A.A.D.T. 2500
(ANNUAL AVERAGE DAILY TRAFFIC)
NUMERALS INDICATE ANNUAL AVERAGE DAILY
TRAFFIC VOLUMES ON DESIGNATED ROADWAYS

FOR DESIGNATED ROADS:
/ = SEGMENT ENDPOINT FOR ALL ROADS
INTERSECTED BY HATCH
C = SEGMENT ENDPOINT ONLY FOR ROAD
SEPARATED FROM INTERSECTING
ROAD BY ARC



MUNICIPALITIES SHOWN
ON THIS SHEET
AUDUBON
CALLAWAY
FRAZEE
LAKE PARK
OGEMA
WOLF LAKE

NOTE: U.S. Census figures shown for all
municipalities unless otherwise stated.