

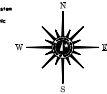
2003 TRAFFIC VOLUMES
GENERAL HIGHWAY MAP
STEELE COUNTY
MINNESOTA

PREPARED BY THE
MINNESOTA DEPARTMENT OF TRANSPORTATION
PROGRAM SUPPORT GROUP
IN COOPERATION WITH
U.S. DEPARTMENT OF TRANSPORTATION
FEDERAL HIGHWAY ADMINISTRATION



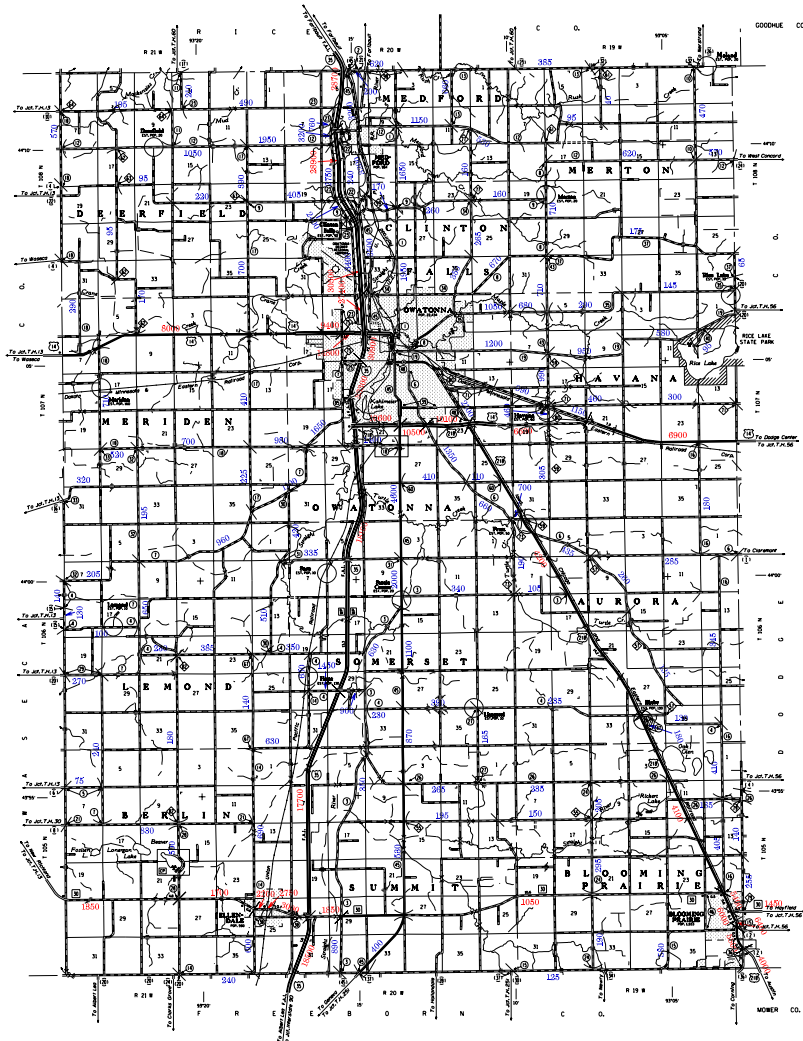
2003
BASIC DATA - 1977*

Projection: Minnesota Composite System
Local: Conformal Conic
North American Datum of 1983



LEGEND

ROAD AND HIGHWAY FEATURES	SYMBOLS
Interstate	[Thick red line with 'I' shield]
State Highway	[Thick black line with 'SH' shield]
County System Road	[Thin black line with 'CS' shield]
Designated Road	[Thin black line with 'DR' shield]
Other Road	[Thin black line]
Interchange	[Circle with 'X' and 'I' shield]
Overpass	[Circle with 'X' and 'O' shield]
Underpass	[Circle with 'X' and 'U' shield]
Grade Separation	[Circle with 'X' and 'G' shield]
Roundabout	[Circle with 'X' and 'R' shield]
Other Features	[Various symbols for bridges, culverts, etc.]



VOLUMES PREPARED BY
THE OFFICE OF
TRANSPORTATION DATA & ANALYSIS

NUMERALS INDICATE AVERAGE DAILY
TRAFFIC VOLUMES ON DESIGNATED ROADS.

TRUNK HIGHWAY ROUTES ARE 2002 A.D.T. VOLUMES.
COUNTY SYSTEM ROADS ARE 2003 A.D.T. VOLUMES.

FOR DESIGNATED ROADS:
/ = SEGMENT ENDPOINT FOR ALL
ROADS INTERSECTED BY HATCH
- = SEGMENT ENDPOINT ONLY FOR
ROAD SEPARATED FROM INTERSECTING
ROAD BY ABC

*NOTED: ALL FEATURES EXCEPT TOWNSHIP BOUNDARIES AND
CITY LIMITS ARE CURRENT AS OF JANUARY 1, 2003.
NOTES FOR DETAILS OF COUNTY STATE AND HIGHWAYS AND COUNTY
ROADS IN INCORPORATED PLACES SEE MAPS OF MUNICIPALITIES.

