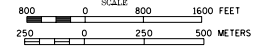


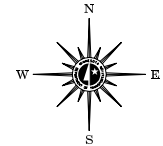
2003 TRAFFIC VOLUMES

MUNICIPALITIES OF
RENVILLE CO.

PREPARED BY THE
MINNESOTA DEPARTMENT OF TRANSPORTATION
PROGRAM SUPPORT GROUP
IN COOPERATION WITH
U.S. DEPARTMENT OF TRANSPORTATION
FEDERAL HIGHWAY ADMINISTRATION

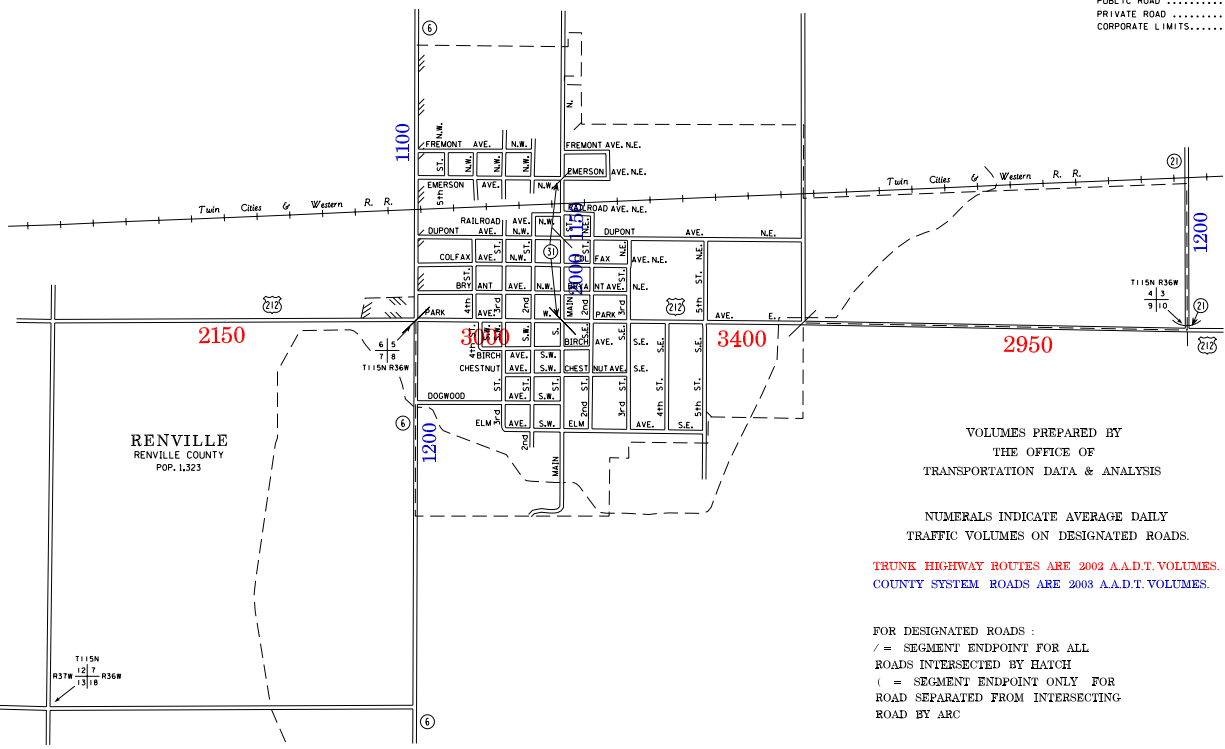
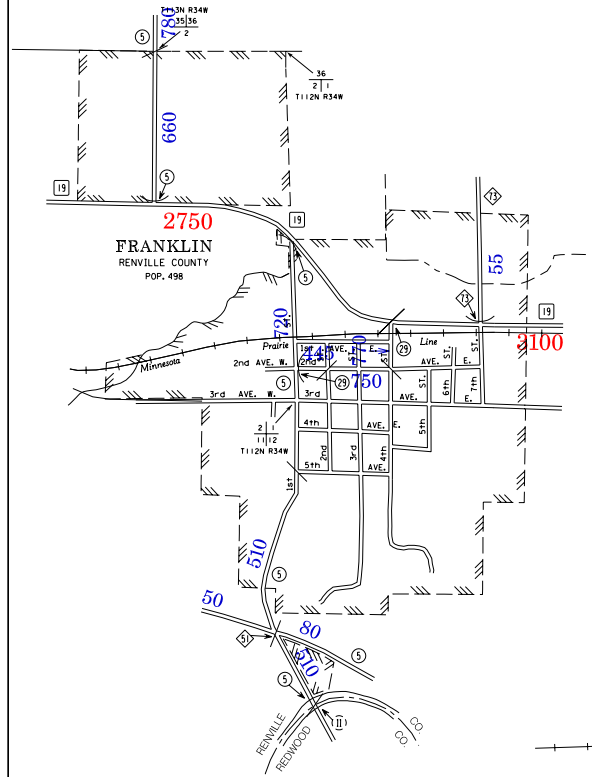
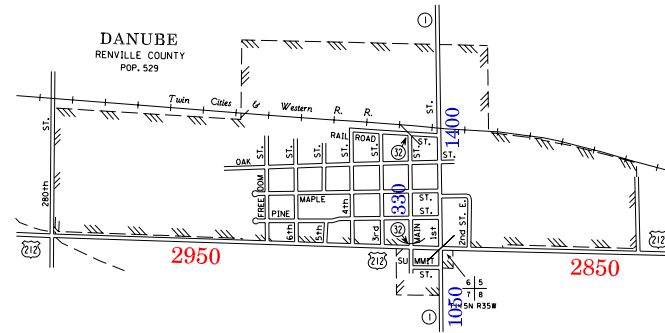


2003
BASIC DATA - 1977



LEGEND

- INTERSTATE TRUNK HIGHWAY.....(I)
- U.S. TRUNK HIGHWAY.....(25)
- STATE TRUNK HIGHWAY.....(35)
- COUNTY STATE AID HIGHWAY.....(24)
- COUNTY ROAD.....(1)
- PUBLIC ROAD.....(1)
- PRIVATE ROAD.....(1)
- CORPORATE LIMITS.....(1)



VOLUMES PREPARED BY
THE OFFICE OF
TRANSPORTATION DATA & ANALYSIS

NUMERALS INDICATE AVERAGE DAILY
TRAFFIC VOLUMES ON DESIGNATED ROADS.

TRUNK HIGHWAY ROUTES ARE 2002 A.A.D.T. VOLUMES.
COUNTY SYSTEM ROADS ARE 2003 A.A.D.T. VOLUMES.

FOR DESIGNATED ROADS :
// = SEGMENT ENDPOINT FOR ALL
ROADS INTERSECTED BY HAICH
(= SEGMENT ENDPOINT ONLY FOR
ROAD SEPARATED FROM INTERSECTING
ROAD BY ARC

MUNICIPALITIES SHOWN
ON THIS SHEET
DANUBE
FRANKLIN
RENVILLE

NOTE: 2000 U.S. CENSUS FIGURES SHOWN FOR ALL MUNICIPALITIES UNLESS OTHERWISE STATED.