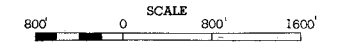
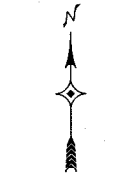


2003 TRAFFIC VOLUMES
MUNICIPALITIES OF
REDWOOD CO.

PREPARED BY THE
MINNESOTA DEPARTMENT OF TRANSPORTATION
TECHNICAL SERVICES DIVISION
IN COOPERATION WITH THE
U.S. DEPARTMENT OF TRANSPORTATION
FEDERAL HIGHWAY ADMINISTRATION

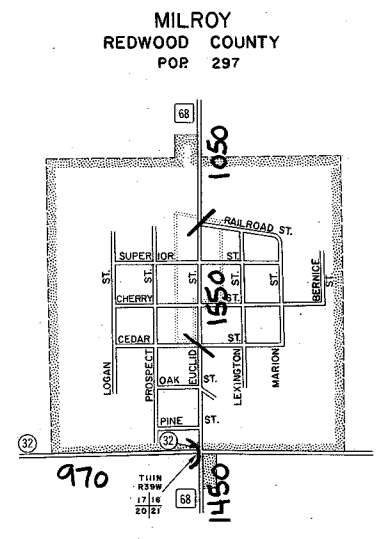
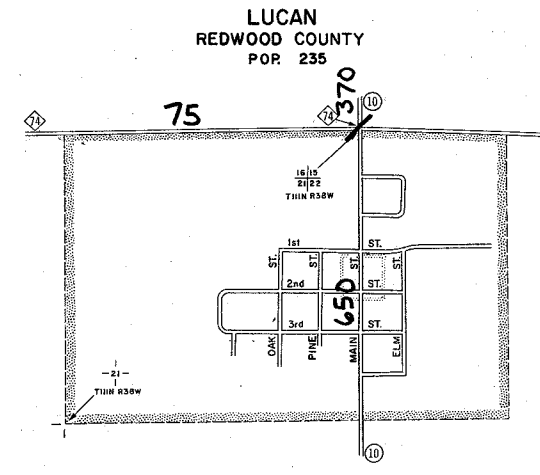


2000
BASIC DATA - 1977



LEGEND

- INTERSTATE TRUNK HIGHWAY.....(35)
- U.S. NUMBERED TRUNK HIGHWAY.....(14)
- STATE NUMBERED TRUNK HIGHWAY.....(6)
- COUNTY STATE AID HIGHWAY.....(3)
- COUNTY ROAD.....(7)
- COUNTY STATE AID HIGHWAY IN ADJOINING COUNTY.....(2)
- COUNTY ROAD IN ADJOINING COUNTY.....(1)
- CORPORATE LIMITS.....
- CENTRAL BUSINESS DISTRICT BOUNDARY.....

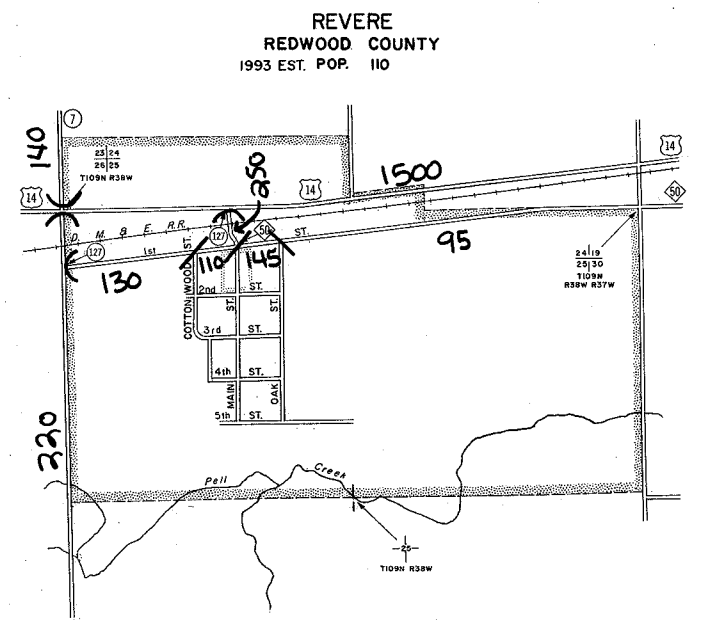
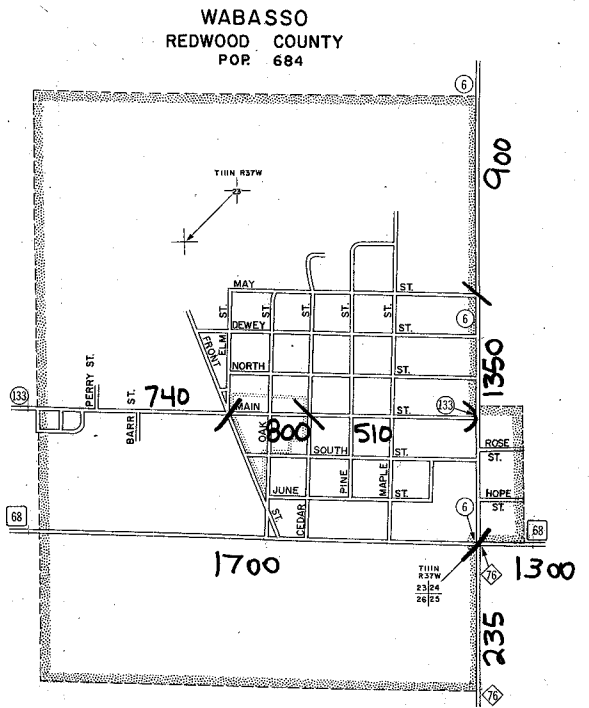
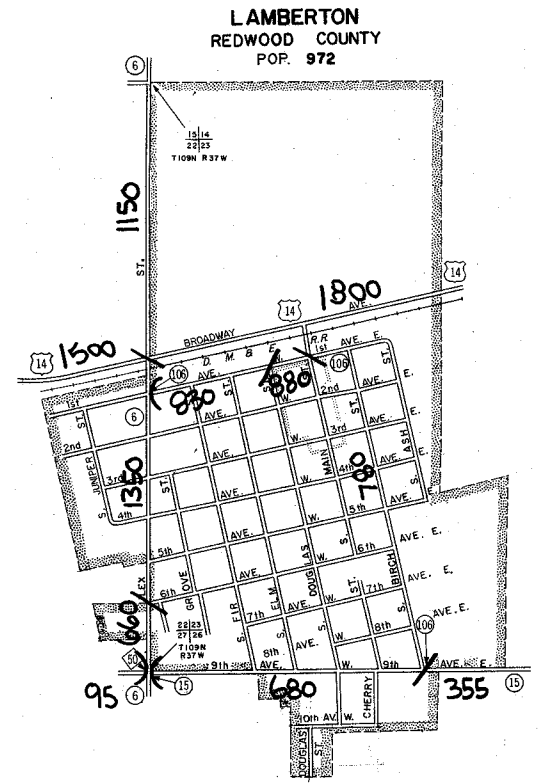


VOLUMES PREPARED BY
THE OFFICE OF
TRANSPORTATION DATA & ANALYSIS

FOR DESIGNATED ROADS:
/ = SEGMENT ENDPOINT FOR ALL ROADS
INTERSECTED BY HATCH
(= SEGMENT ENDPOINT ONLY FOR ROAD
SEPARATED FROM INTERSECTING
ROAD BY ARC

A.A.D.T. 2500
(ANNUAL AVERAGE DAILY TRAFFIC)

NUMERALS INDICATE ANNUAL AVERAGE DAILY
TRAFFIC VOLUMES ON DESIGNATED ROADWAYS



- MUNICIPALITIES SHOWN
ON THIS SHEET
- LAMBERTON
 - LUCAN
 - MILROY
 - REVERE
 - WABASSO