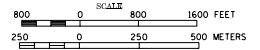


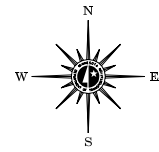
2003 TRAFFIC VOLUMES

MUNICIPALITIES OF
MEEKER CO.

PREPARED BY THE
MINNESOTA DEPARTMENT OF TRANSPORTATION
PROGRAM SUPPORT GROUP
IN COOPERATION WITH
U.S. DEPARTMENT OF TRANSPORTATION
FEDERAL HIGHWAY ADMINISTRATION



2003
BASIC DATA - 1977



LEGEND

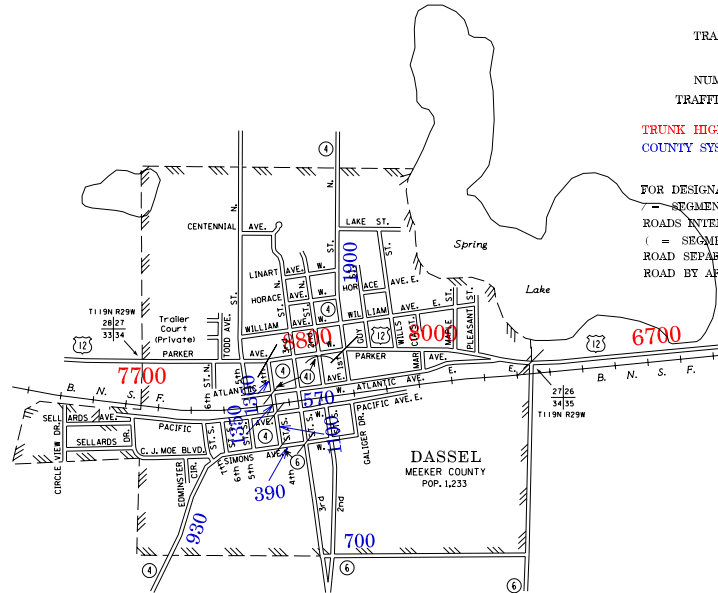
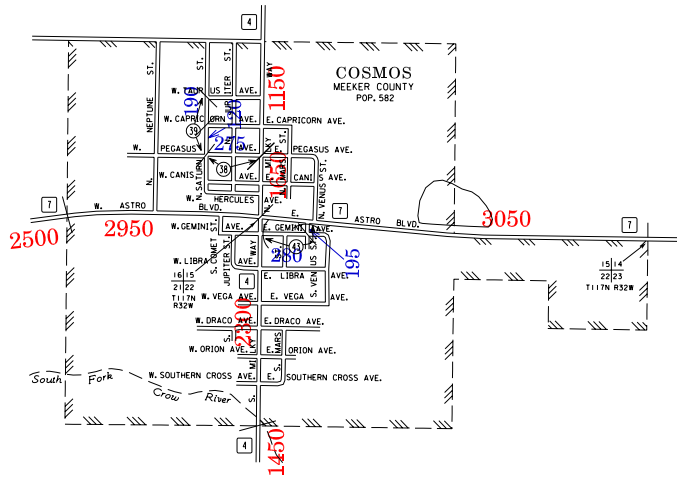
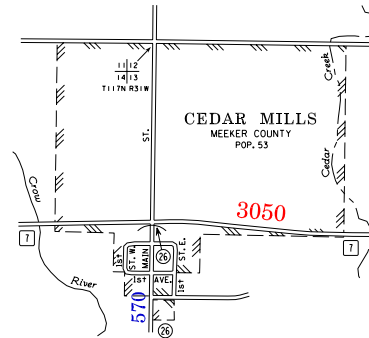
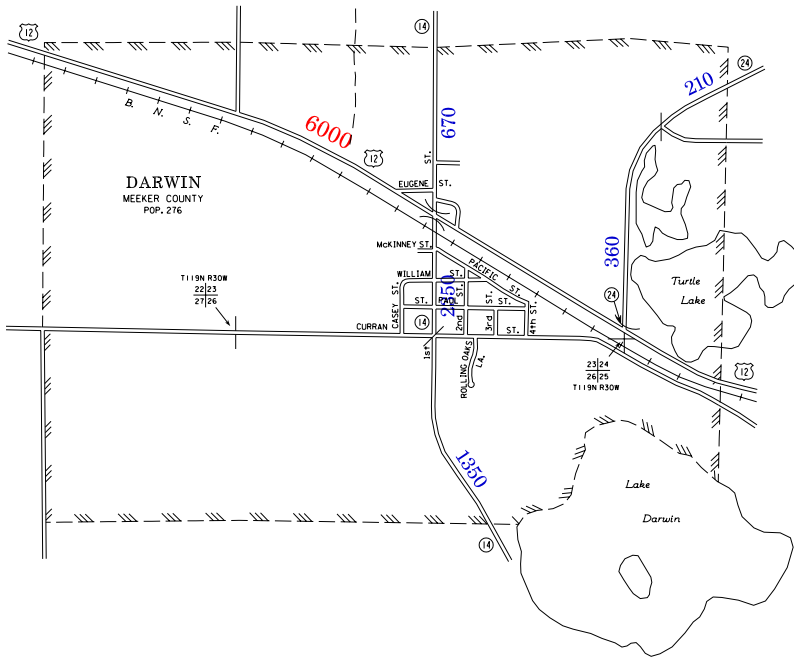
- INTERSTATE TRUNK HIGHWAY.....(12)
- U.S. TRUNK HIGHWAY.....(12)
- STATE TRUNK HIGHWAY.....(26)
- COUNTY STATE AID HIGHWAY.....(4)
- COUNTY ROAD.....(4)
- PUBLIC ROAD.....(4)
- PRIVATE ROAD.....(4)
- CORPORATE LIMITS.....(4)

VOLUMES PREPARED BY
THE OFFICE OF
TRANSPORTATION DATA & ANALYSIS

NUMERALS INDICATE AVERAGE DAILY
TRAFFIC VOLUMES ON DESIGNATED ROADS.

TRUNK HIGHWAY ROUTES ARE 2002 A.A.D.T. VOLUMES.
COUNTY SYSTEM ROADS ARE 2003 A.A.D.T. VOLUMES.

FOR DESIGNATED ROADS :
SEGMENT ENDPOINT FOR ALL
ROADS INTERSECTED BY HATCH
(= SEGMENT ENDPOINT ONLY FOR
ROAD SEPARATED FROM INTERSECTING
ROAD BY ARC



MUNICIPALITIES SHOWN
ON THIS SHEET
CEDAR MILLS
COSMOS
DARWIN
DASSEL

NOTE: 2000 U.S. CENSUS FIGURES SHOWN FOR ALL MUNICIPALITIES UNLESS OTHERWISE STATED.